

TAHOE DONNER UNIT-8

BEING A PORTION OF
SECTION 4 & 9, T.17N, R.16E, M.D.M.
IN THE UNINCORPORATED TERRITORY OF
NEVADA COUNTY, CALIFORNIA
SCALE 1"=100'
CRANMER ENGINEERING, INC.

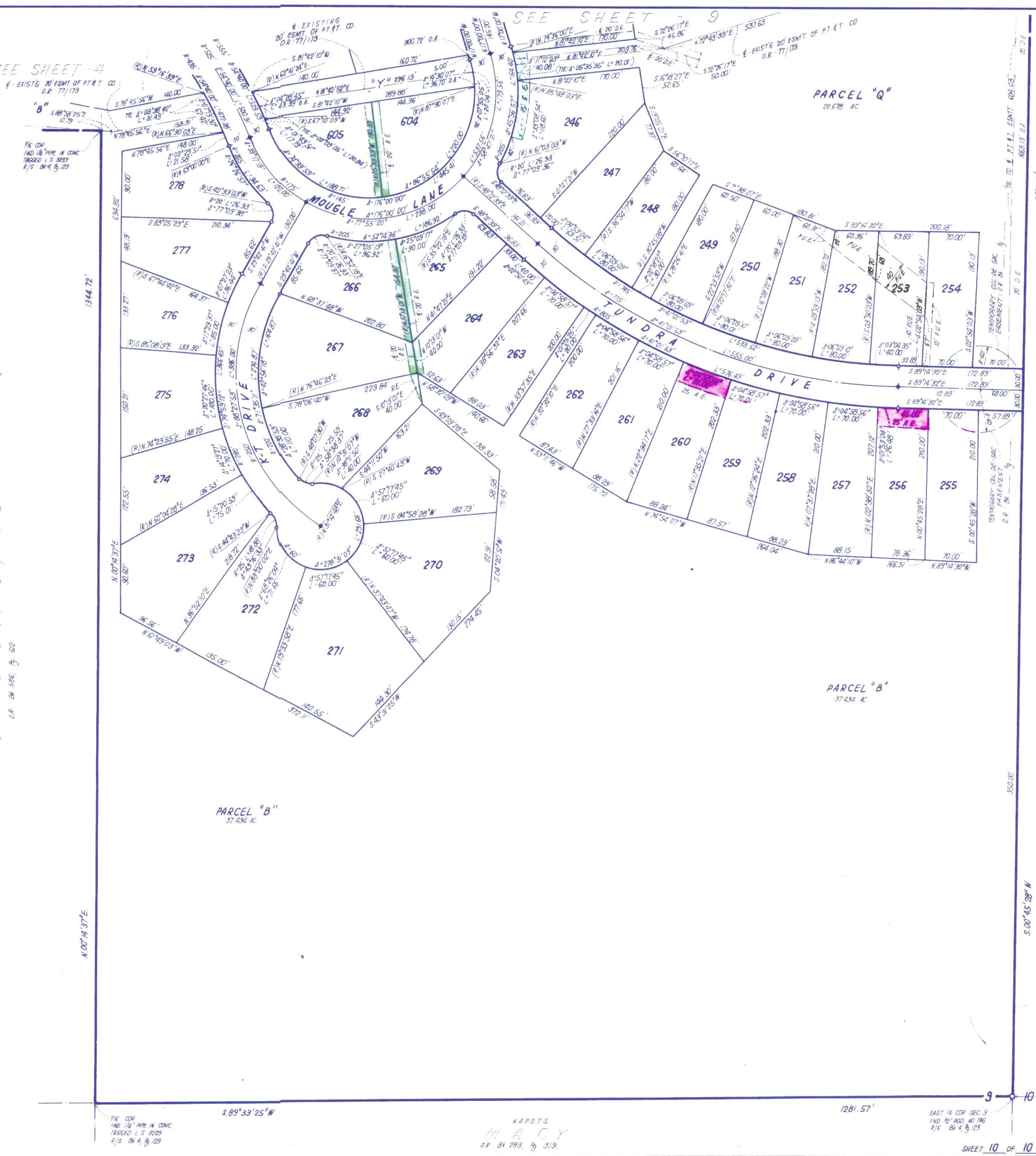
NOTES:

1. $\frac{3}{16}$ " ROD SET AT ALL EXTERIOR ANGLE POINTS, TAGGED R.C.E. 13309, EXCEPT AS NOTED
2. $\frac{3}{16}$ " ROD SET AT ALL INTERIOR LOT CORNERS & ANGLE POINTS, TAGGED R.C.E. 13309
3. BASIS OF BEARINGS AS SHOWN ON SHEET 1 OF 10 SHEETS.
4. NAPOTS: NOT A PART OF THIS SUBDIVISION
5. \square SET 2" PIPE, TAGGED R.C.E. 13309
6. \diamond INDICATES UNSET CURVE POINT.
7. \blacklozenge SET RAILROAD SPIKE AFTER PAVING
8. \circ INDICATES $\frac{3}{4}$ " ROD SET ON CURVE POINT, TAGGED R.C.E. 13309.



for B. Cranmer

MILTON C. DAVID, INC.
NAPOTS
D.R. BK 385, P. 512



NAPOTS
U.S.A.
(UNPATENTED)

SHEET 10 OF 10 SHEETS

UNIT 8-10