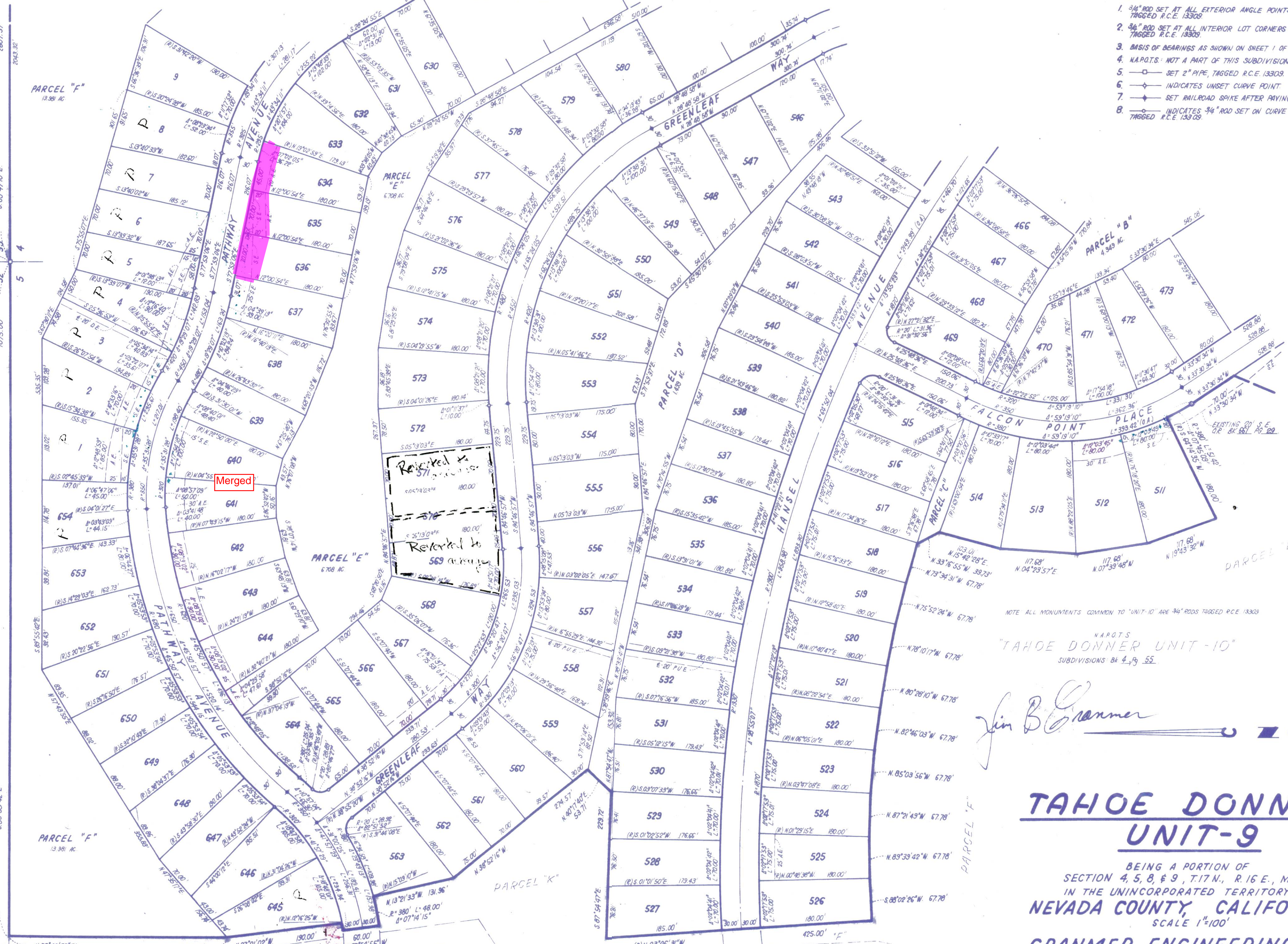


N.A.P.O.T.S.  
U.S.A.  
O.R. 5081615

N.A.P.O.T.S.  
U.S.A.  
O.R. 5081615

SEE SHEET - 4

- NOTES:
1. 3/4" ROD SET AT ALL EXTERIOR ANGLE POINTS, TAGGED R.C.E. 13309.
  2. 3/4" ROD SET AT ALL INTERIOR LOT CORNERS & ANGLE POINTS, TAGGED R.C.E. 13309.
  3. BASIS OF BEARINGS AS SHOWN ON SHEET 1 OF 11 SHEETS.
  4. N.A.P.O.T.S.: NOT A PART OF THIS SUBDIVISION.
  5. — SET 2" PIPE, TAGGED R.C.E. 13309.
  6. — INDICATES UNSET CURVE POINT.
  7. — SET RAILROAD SPIKE AFTER PAVING.
  8. — INDICATES 3/4" ROD SET ON CURVE POINT, TAGGED R.C.E. 13309.



NOTE ALL MONUMENTS COMMON TO "UNIT-10" ARE 3/4" RODS TAGGED R.C.E. 13309

N.A.P.O.T.S.  
"TAHOE DONNER UNIT-10"  
SUBDIVISIONS BK 4, 19, 55

*Jim B. Cranmer*

# TAHOE DONNER UNIT-9

BEING A PORTION OF  
SECTION 4, 5, 8, & 9, T.17 N., R.16 E., M.D.M.  
IN THE UNINCORPORATED TERRITORY OF  
NEVADA COUNTY, CALIFORNIA  
SCALE 1"=100'  
CRANMER ENGINEERING, INC.

9-3

SEE SHEET - 6

SEE SHEET - 6