

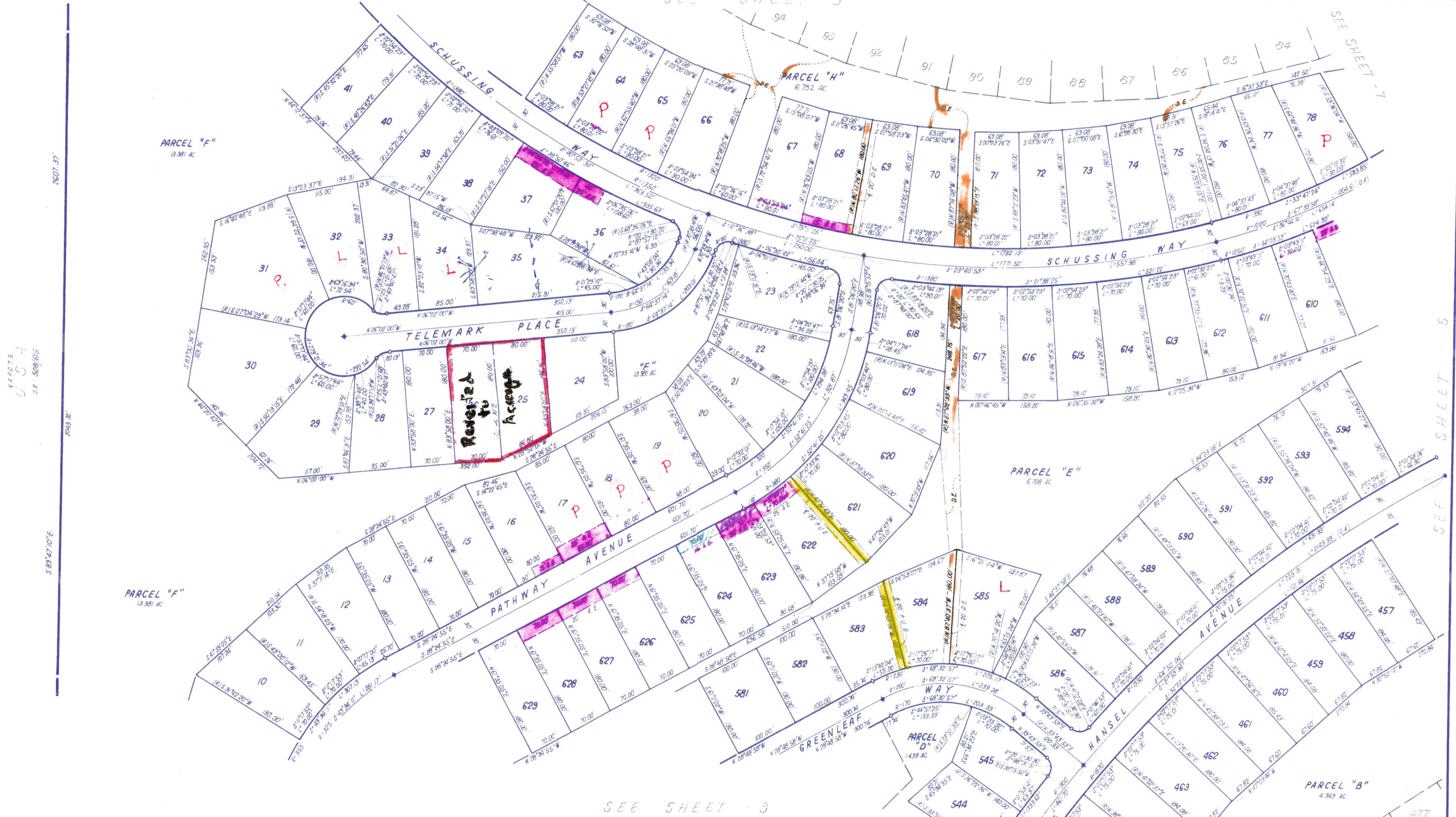
# TAHOE DONNER UNIT-9

BEING A PORTION OF  
SECTION 4, 5, 8, & 9, T.17N., R.16E., M.D.M.  
IN THE UNINCORPORATED TERRITORY OF  
NEVADA COUNTY, CALIFORNIA  
SCALE 1"=100'

CRANMER ENGINEERING, INC.

- NOTES:
- 3/4" ROD SET AT ALL EXTERIOR ANGLE POINTS, TAGGED R.C.E. 13309.
  - 3/4" ROD SET AT ALL INTERIOR LOT CORNERS, & ANGLE POINTS, TAGGED R.C.E. 13309.
  - BASIS OF BEARINGS AS SHOWN ON SHEET 1 OF 11 SHEETS.
  - N.A.P.O.T.S.: NOT A PART OF THIS SUBDIVISION
  - SET 2" PIPE, TAGGED R.C.E. 13309
  - INDICATES UNSET CURVE POINT.
  - SET RAILROAD SPIKE AFTER PAVING.
  - INDICATES 3/4" ROD SET ON CURVE POINT, TAGGED R.C.E. 13309.

*Jim B. Cranmer*



N.A.P.O.T.S.  
U.S.A.  
D.R. 5091615

UNIT 9 - 4