

# TAHOE DONNER UNIT-9

BEING A PORTION OF  
SECTION 4, 5, 8, & 9, T.17N., R.16E., M.D.M.  
IN THE UNINCORPORATED TERRITORY OF  
NEVADA COUNTY, CALIFORNIA  
SCALE 1"=100'  
CRANMER ENGINEERING, INC.

SEE SHEET - 3

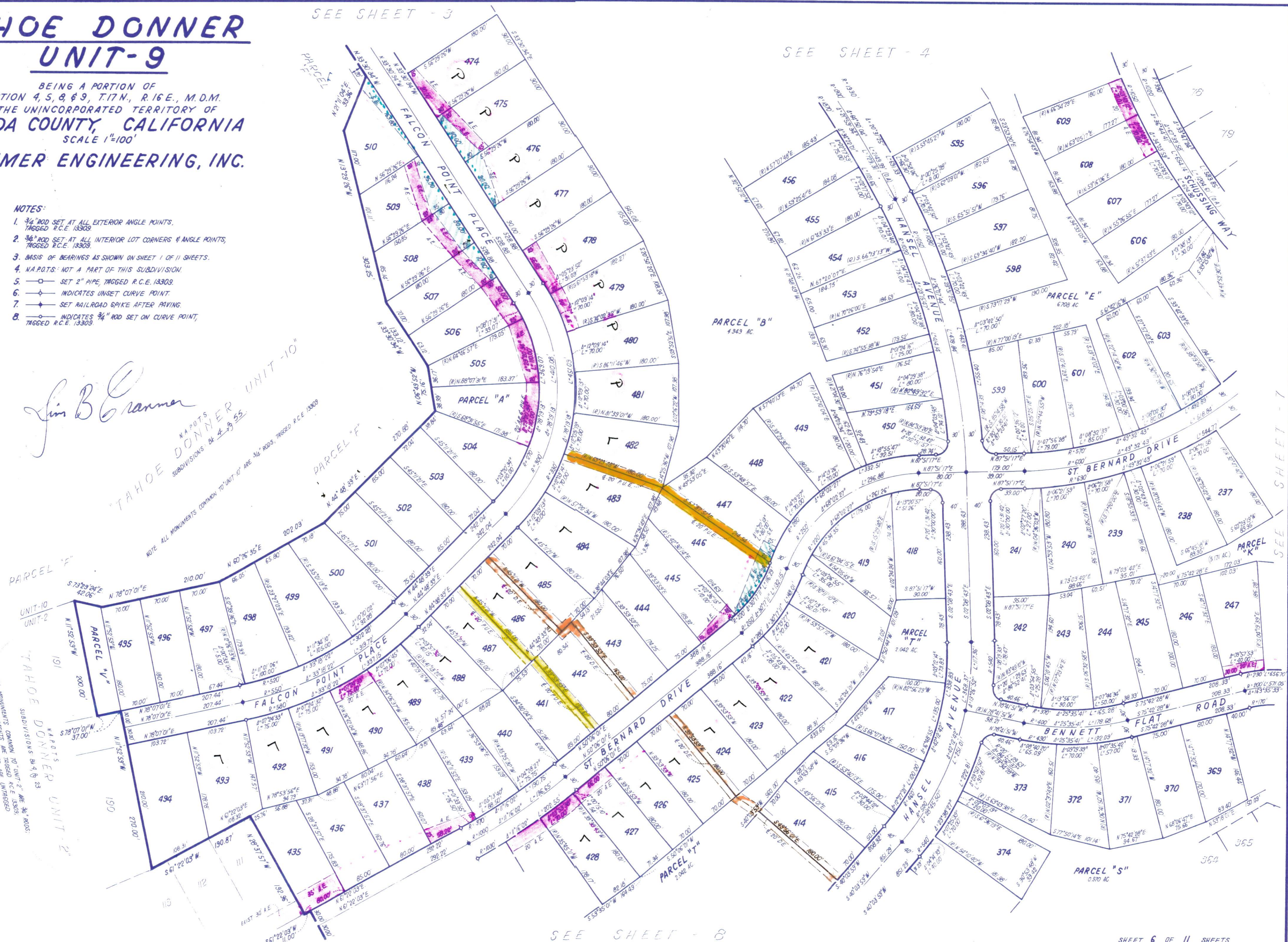
SEE SHEET - 4

- NOTES:**
1. 3/4" ROD SET AT ALL EXTERIOR ANGLE POINTS, TAGGED R.C.E. 13309.
  2. 3/4" ROD SET AT ALL INTERIOR LOT CORNERS & ANGLE POINTS, TAGGED R.C.E. 13309.
  3. BASIS OF BEARINGS AS SHOWN ON SHEET 1 OF 11 SHEETS.
  4. N.A.P.O.T.S.: NOT A PART OF THIS SUBDIVISION.
  5. —○— SET 2" PIPE, TAGGED R.C.E. 13309.
  6. —◇— INDICATES UNSET CURVE POINT.
  7. —◆— SET RAILROAD SPIKE AFTER PAVING.
  8. —○— INDICATES 3/4" ROD SET ON CURVE POINT, TAGGED R.C.E. 13309.



*Jim B. Cranmer*  
N.A.P.O.T.S. TAHOE DONNER UNIT-10  
SUBDIVISIONS: Bk 4-9-55

NOTE: ALL MONUMENTS COMMON TO UNIT-2 ARE 3/4" RODS. TAGGED R.C.E. 13309.  
NOTE: ALL MONUMENTS COMMON TO UNIT-2 ARE 3/4" RODS. TAGGED R.C.E. 13309.  
NOTE: ALL MONUMENTS COMMON TO UNIT-2 ARE 3/4" RODS. TAGGED R.C.E. 13309.



SEE SHEET - 8

SHEET 6 OF 11 SHEETS

UNIT 9-6