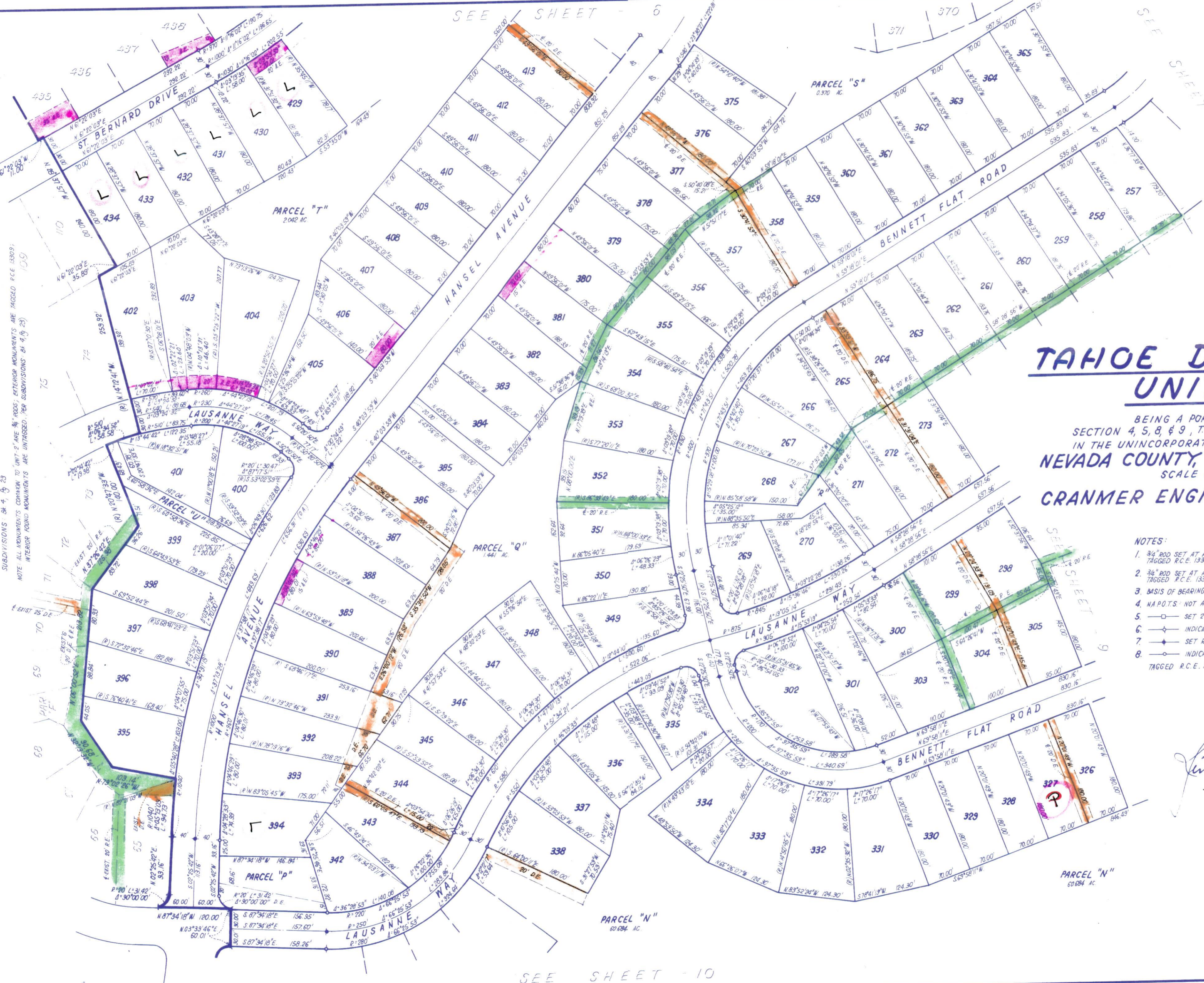


TAHOE DONNER UNIT-2
N.A.P.O.T.S. UNIT-2
SUBDIVISIONS BK 4, 19, 23

NOTE: ALL MONUMENTS COMPARED TO UNIT-2 ARE 3/4" RODS. EXTERIOR MONUMENTS ARE TAGGED P.C.E. 13303.
INTERIOR MONUMENTS ARE UNTAGGED. PER SUBDIVISIONS BK 4, 19, 23

SEE SHEET - 6

SEE SHEET



TAHOE DONNER UNIT-9

BEING A PORTION OF
SECTION 4, 5, 8, & 9, T.17N., R.16E., M.D.M.
IN THE UNINCORPORATED TERRITORY OF
NEVADA COUNTY, CALIFORNIA
SCALE 1"=100'
CRANMER ENGINEERING, INC.

- NOTES:
- 3/4" ROD SET AT ALL EXTERIOR ANGLE POINTS, TAGGED R.C.E. 13303
 - 3/4" ROD SET AT ALL INTERIOR LOT CORNERS & ANGLE POINTS, TAGGED R.C.E. 13303
 - BASIS OF BEARINGS AS SHOWN ON SHEET 1 OF 11 SHEETS
 - N.A.P.O.T.S.: NOT A PART OF THIS SUBDIVISION.
 - SET 2" PIPE, TAGGED R.C.E. 13303
 - ◇ INDICATES UNSET CURVE POINT.
 - ◆ SET RAILROAD SPIKE AFTER PAVING
 - INDICATES 3/4" ROD SET ON CURVE POINT, TAGGED R.C.E. 13303

Lin B. Cranmer

SEE SHEET - 10

SHEET 8 OF 11 SHEETS

L.G.W.

F9-9

UNIT 9 - 8