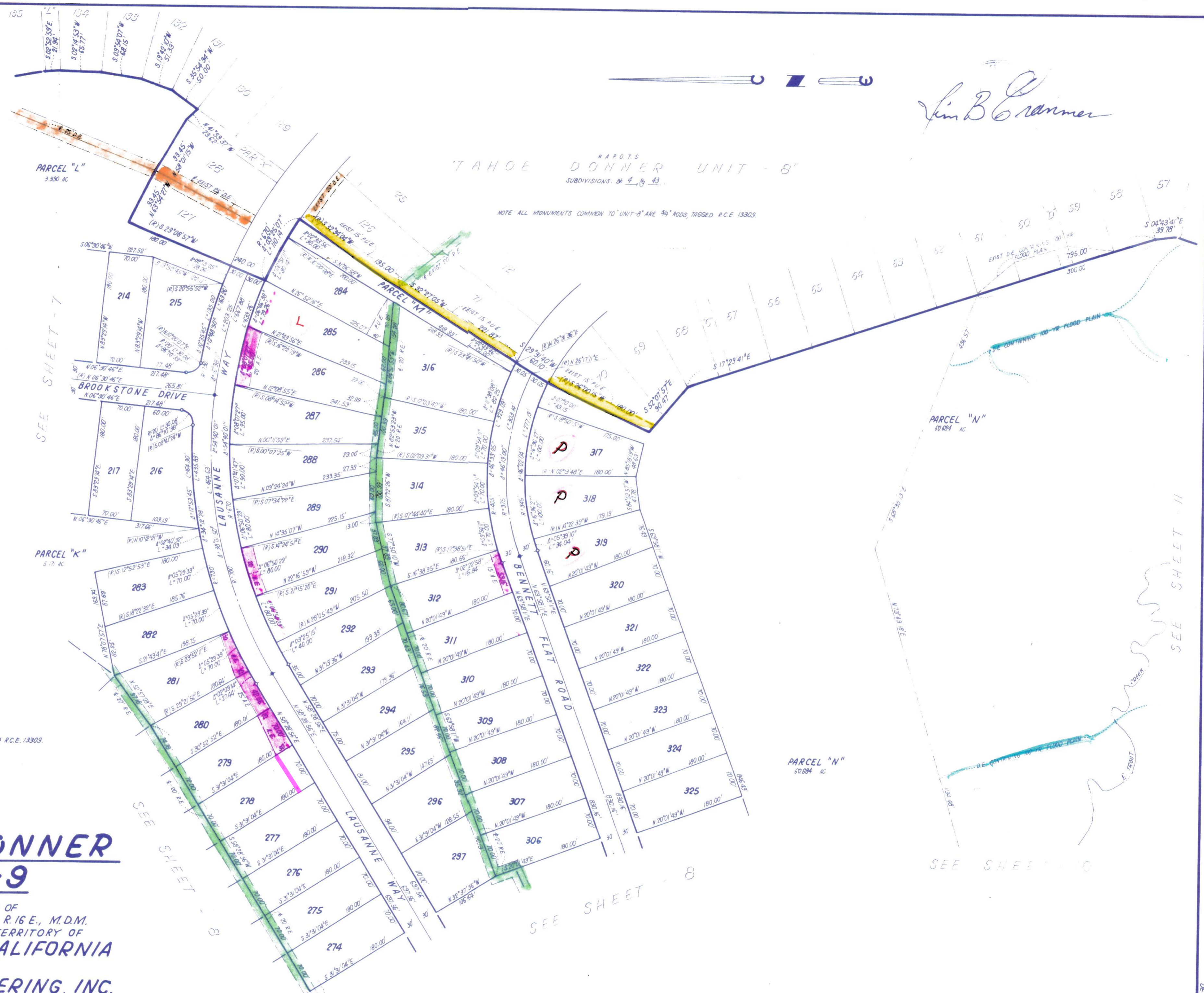


*Jim B. Cranmer*

TAHOE DONNER UNIT - 9  
SUBDIVISIONS # 4, 8, 9

NOTE ALL MONUMENTS COMMON TO UNIT 8 ARE 3/4" RODS, TAGGED R.C.E. 13309.



- NOTES:
1. 3/4" ROD SET AT ALL EXTERIOR ANGLE POINTS, TAGGED R.C.E. 13309.
  2. 3/4" ROD SET AT ALL INTERIOR LOT CORNERS & ANGLE POINTS, TAGGED R.C.E. 13309.
  3. BASIS OF BEARINGS AS SHOWN ON SHEET 1 OF 11 SHEETS.
  4. N.A.P.O.T.S.: NOT A PART OF THIS SUBDIVISION.
  5. SET 2" PIPE, TAGGED R.C.E. 13309.
  6. INDICATES UNSET CURVE POINT.
  7. SET RAILROAD SPIKE AFTER PAVING.
  8. INDICATES 3/4" ROD SET ON CURVE POINT, TAGGED R.C.E. 13309.

**TAHOE DONNER UNIT-9**

BEING A PORTION OF SECTION 4, 5, 8, & 9, T.17N., R.16E., M.D.M. IN THE UNINCORPORATED TERRITORY OF NEVADA COUNTY, CALIFORNIA SCALE 1"=100' CRANMER ENGINEERING, INC.

UNIT 9-9