

SEE SHEET - 8

SEE SHEET - 9



NOTE: ALL MONUMENTS COMMON TO UNIT-2 ARE 3/4" RODS. EXTERIOR MONUMENTS ARE TAGGED R.C.E. 13309. INTERIOR FOUND MONUMENTS ARE UNTAGGED (PER SUBDIVISIONS BK 4, PG 23)

TAHOE DONNER UNIT-2
N.A.P.O.T.S. SUBDIVISIONS BK 4, PG 23

- NOTES:
- 3/4" ROD SET AT ALL EXTERIOR ANGLE POINTS, TAGGED R.C.E. 13309.
 - 3/4" ROD SET AT ALL INTERIOR LOT CORNERS & ANGLE POINTS, TAGGED R.C.E. 13309.
 - BASIS OF BEARINGS AS SHOWN ON SHEET 1 OF 11 SHEETS.
 - N.A.P.O.T.S.: NOT A PART OF THIS SUBDIVISION.
 - SET 2" PIPE, TAGGED R.C.E. 13309.
 - ◇ INDICATES UNSET CURVE POINT.
 - ◆ SET RAILROAD SPIKE AFTER PAVING.
 - INDICATES 3/4" ROD SET ON CURVE POINT, TAGGED R.C.E. 13309.

**TAHOE DONNER
UNIT-9**

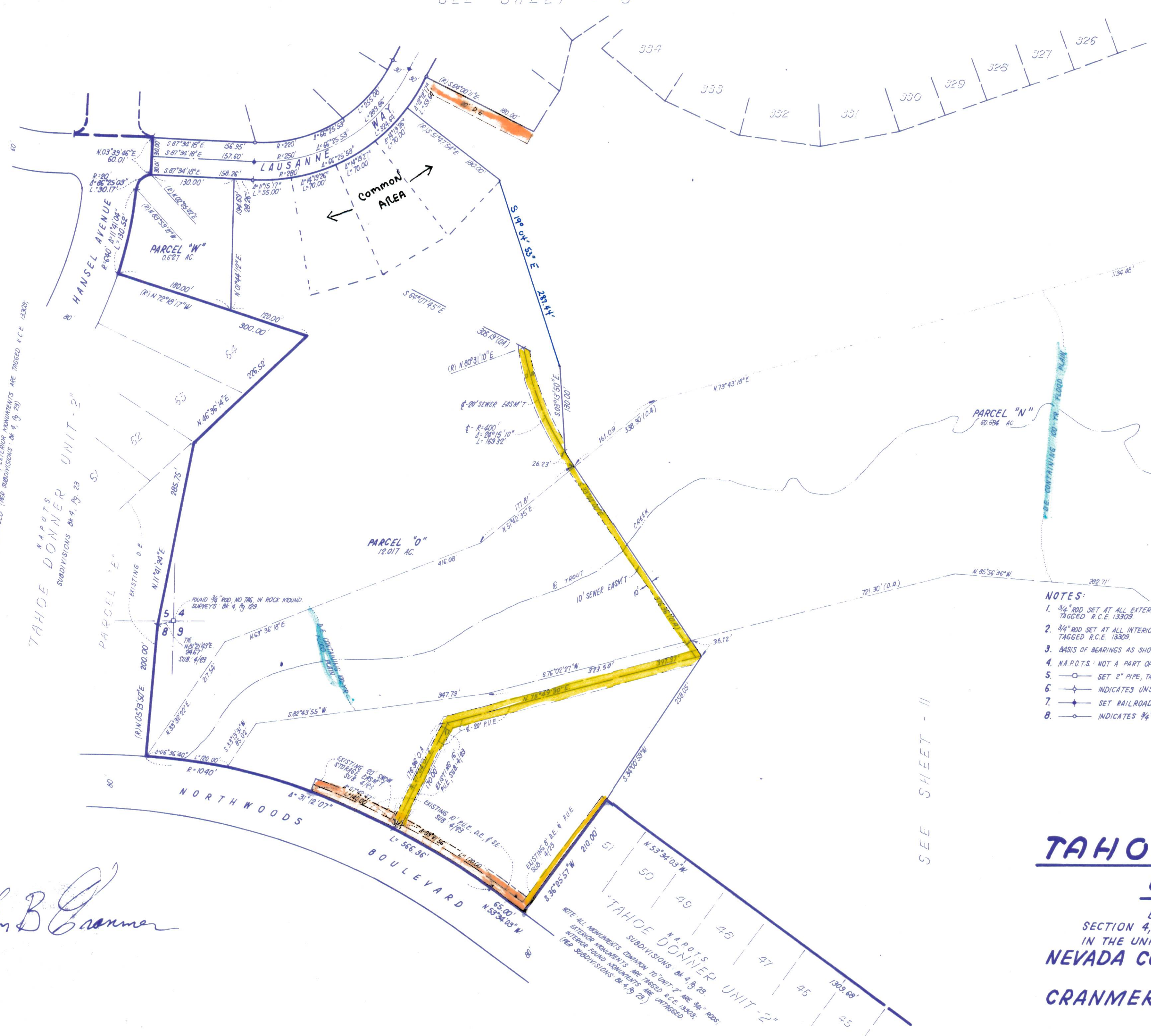
BEING A PORTION OF
SECTION 4, 5, 8, & 9, T.17N., R.16E., M.D.M.
IN THE UNINCORPORATED TERRITORY OF
NEVADA COUNTY, CALIFORNIA
SCALE 1"=100'

CRANMER ENGINEERING, INC.

SHEET 10 OF 11 SHEETS

UNIT 9 - 10

Jim B Cranmer



NOTE: ALL MONUMENTS COMMON TO UNIT-2 ARE 3/4" RODS. EXTERIOR MONUMENTS ARE TAGGED R.C.E. 13309. INTERIOR FOUND MONUMENTS ARE UNTAGGED (PER SUBDIVISIONS BK 4, PG 23)

SEE SHEET - 11

L6.W.

F9-9