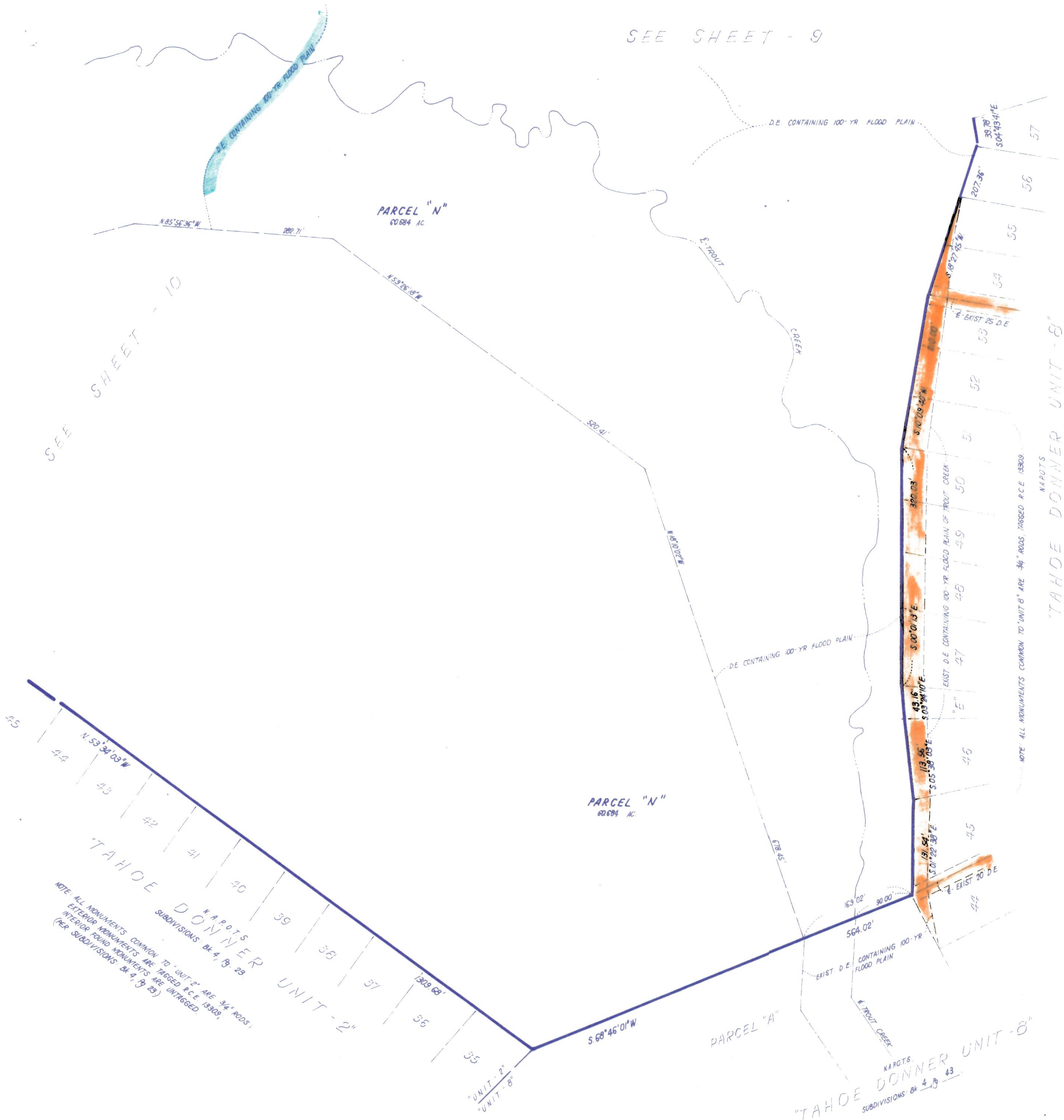


SEE SHEET - 9

- NOTES:
1. $\frac{3}{4}$ " ROD SET AT ALL EXTERIOR ANGLE POINTS, TAGGED R.C.E. 13309.
 2. $\frac{3}{4}$ " ROD SET AT ALL INTERIOR LOT CORNERS & ANGLE POINTS, TAGGED R.C.E. 13309.
 3. BASIS OF BEARINGS AS SHOWN ON SHEET 1 OF 11 SHEETS.
 4. N.A.P.O.T.S.: NOT A PART OF THIS SUBDIVISION.
 5. \square SET 2" PIPE, TAGGED R.C.E. 13309.
 6. \diamond INDICATES UNSET CURVE POINT.
 7. \blacklozenge SET RAILROAD SPIKE AFTER PAVING.
 8. \circ INDICATES $\frac{3}{4}$ " ROD SET ON CURVE POINT TAGGED R.C.E. 13309.



Jim B. Cranmer

TAHOE DONNER UNIT-9

BEING A PORTION OF SECTION 4, 5, 8, & 9, T.17N., R.16E. M.D.M. IN THE UNINCORPORATED TERRITORY OF NEVADA COUNTY, CALIFORNIA

SCALE 1"=100'

CRANMER ENGINEERING, INC.

SHEET 11 OF 11 SHEETS

UNIT 9 - 11

L.G.W.
F9-9