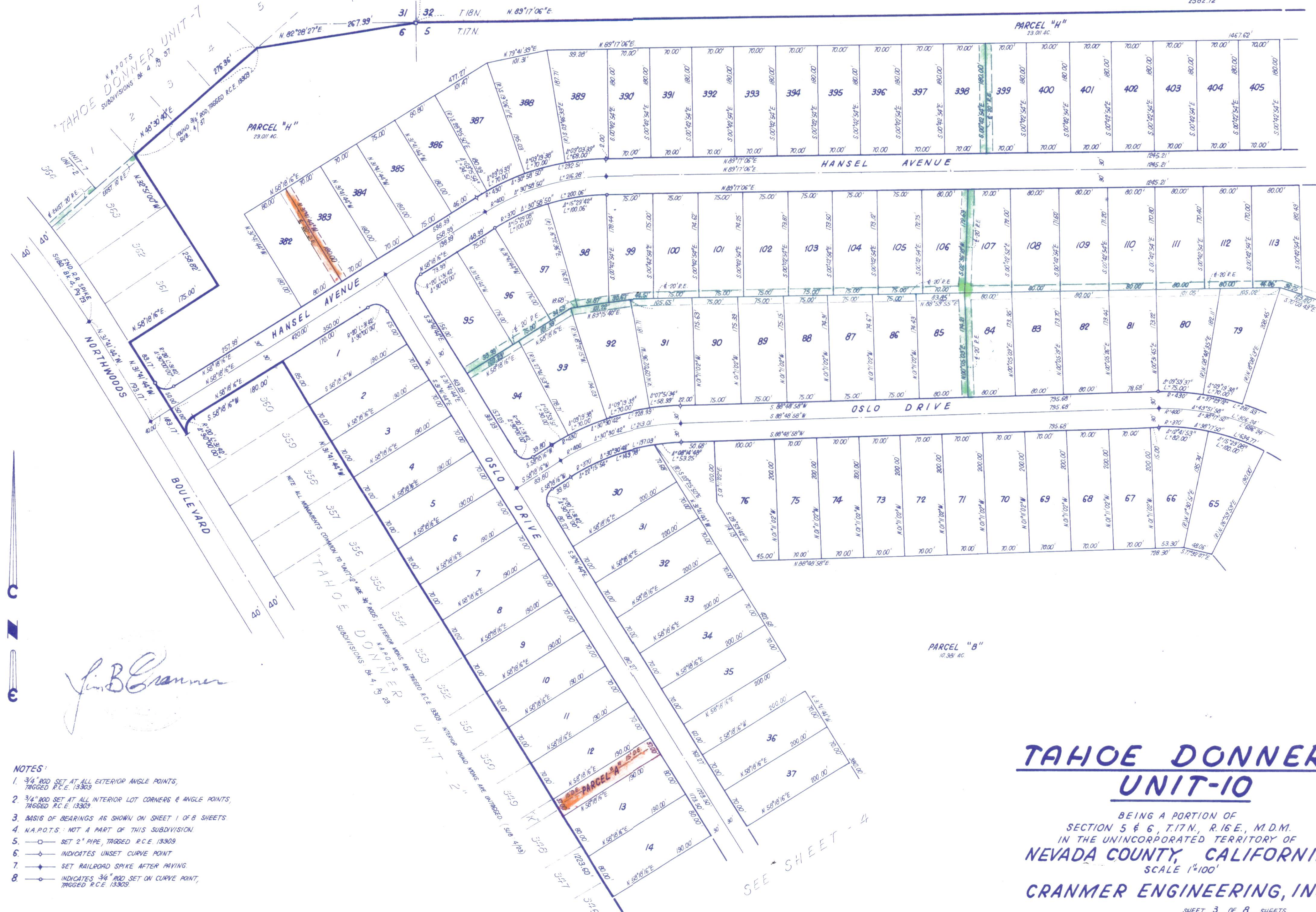


N.A.P.O.T.S.
U.S.A.
D.R. 28/481



- NOTES:**
1. 3/4" ROD SET AT ALL EXTERIOR ANGLE POINTS, TAGGED R.C.E. 13309
 2. 3/4" ROD SET AT ALL INTERIOR LOT CORNERS & ANGLE POINTS, TAGGED R.C.E. 13309
 3. BASIS OF BEARINGS AS SHOWN ON SHEET 1 OF 8 SHEETS
 4. N.A.P.O.T.S.: NOT A PART OF THIS SUBDIVISION
 5. —○— SET 2" PIPE, TAGGED R.C.E. 13309
 6. —○— INDICATES UNSET CURVE POINT
 7. —○— SET RAILROAD SPIKE AFTER PAVING
 8. —○— INDICATES 3/4" ROD SET ON CURVE POINT, TAGGED R.C.E. 13309

Jim Cranmer

TAHOE DONNER UNIT-10

BEING A PORTION OF
SECTION 5 & 6, T.17N., R.16E., M.D.M.
IN THE UNINCORPORATED TERRITORY OF
NEVADA COUNTY, CALIFORNIA
SCALE 1"=100'

CRANMER ENGINEERING, INC.