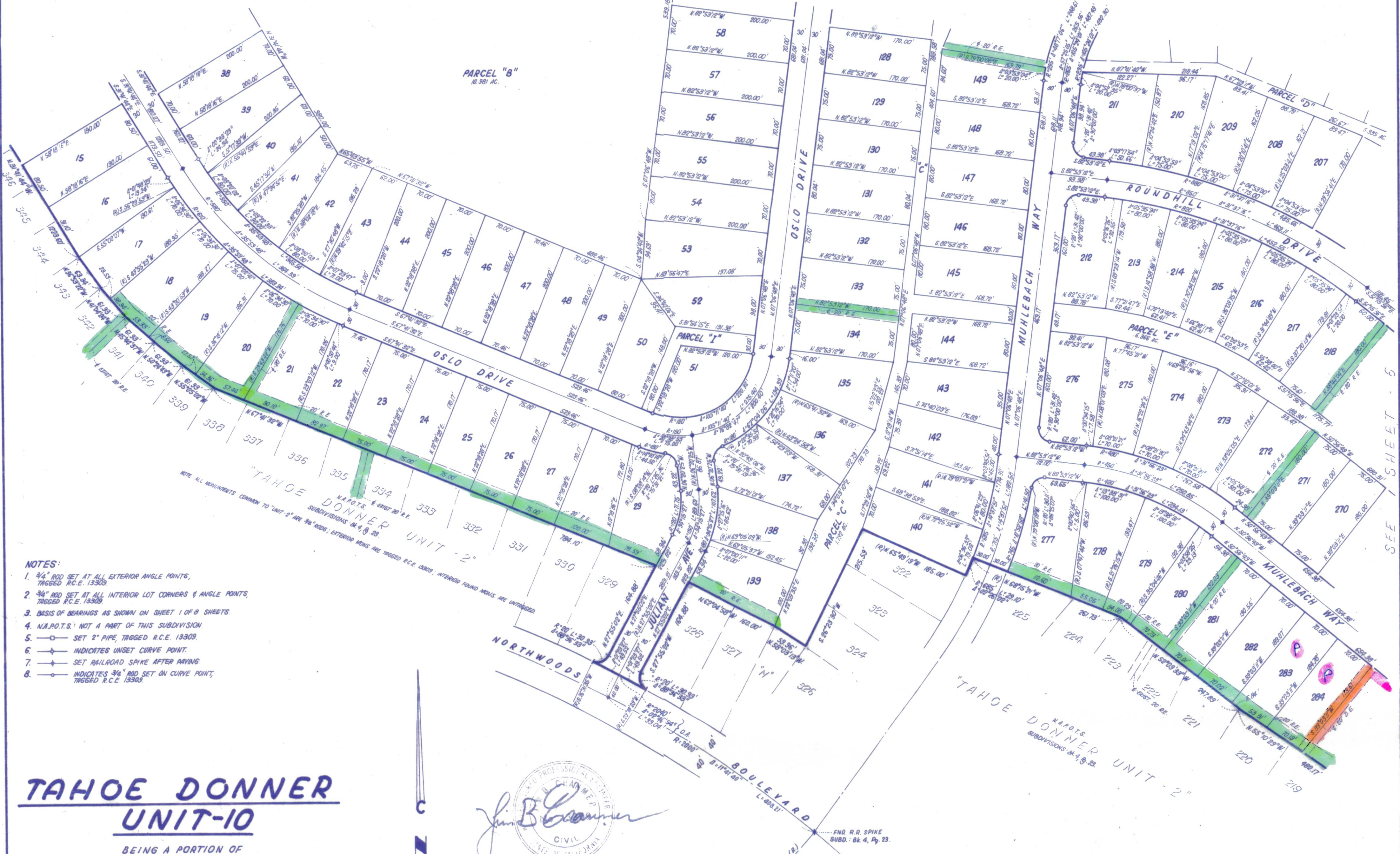


SEE SHEET - 3

SEE SHEET - 5

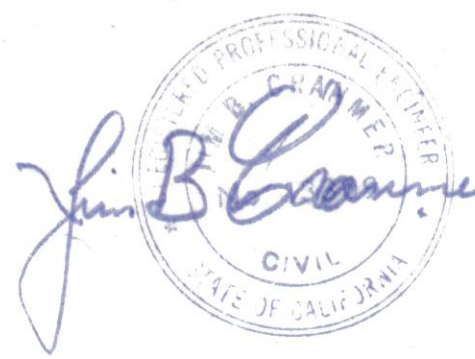


- NOTES:
1. 3/4" ROD SET AT ALL EXTERIOR ANGLE POINTS, TAGGED R.C.E. 13309.
 2. 3/4" ROD SET AT ALL INTERIOR LOT CORNERS & ANGLE POINTS, TAGGED R.C.E. 13309.
 3. BASIS OF BEARINGS AS SHOWN ON SHEET 1 OF 8 SHEETS.
 4. N.A.P.O.T.S.: NOT A PART OF THIS SUBDIVISION.
 5. SET 2" PIPE, TAGGED R.C.E. 13309.
 6. INDICATES UNSET CURVE POINT.
 7. SET RAILROAD SPIKE AFTER PAVING.
 8. INDICATES 3/4" ROD SET ON CURVE POINT, TAGGED R.C.E. 13309.

TAHOE DONNER UNIT-10

BEING A PORTION OF SECTION 5 & 6, T.17N., R.16E., M.D.M. IN THE UNINCORPORATED TERRITORY OF NEVADA COUNTY, CALIFORNIA
SCALE 1"=100'

CRANMER ENGINEERING, INC.



UNIT 10-4