

TAHOE DONNER UNIT-II

BEING A PORTION OF
SECTION 5, 6, & 7, T.17 N., R.16 E., M. D. M.
IN THE UNINCORPORATED TERRITORY OF
NEVADA COUNTY, CALIFORNIA
SCALE 1"=100'

CRANMER ENGINEERING, INC.

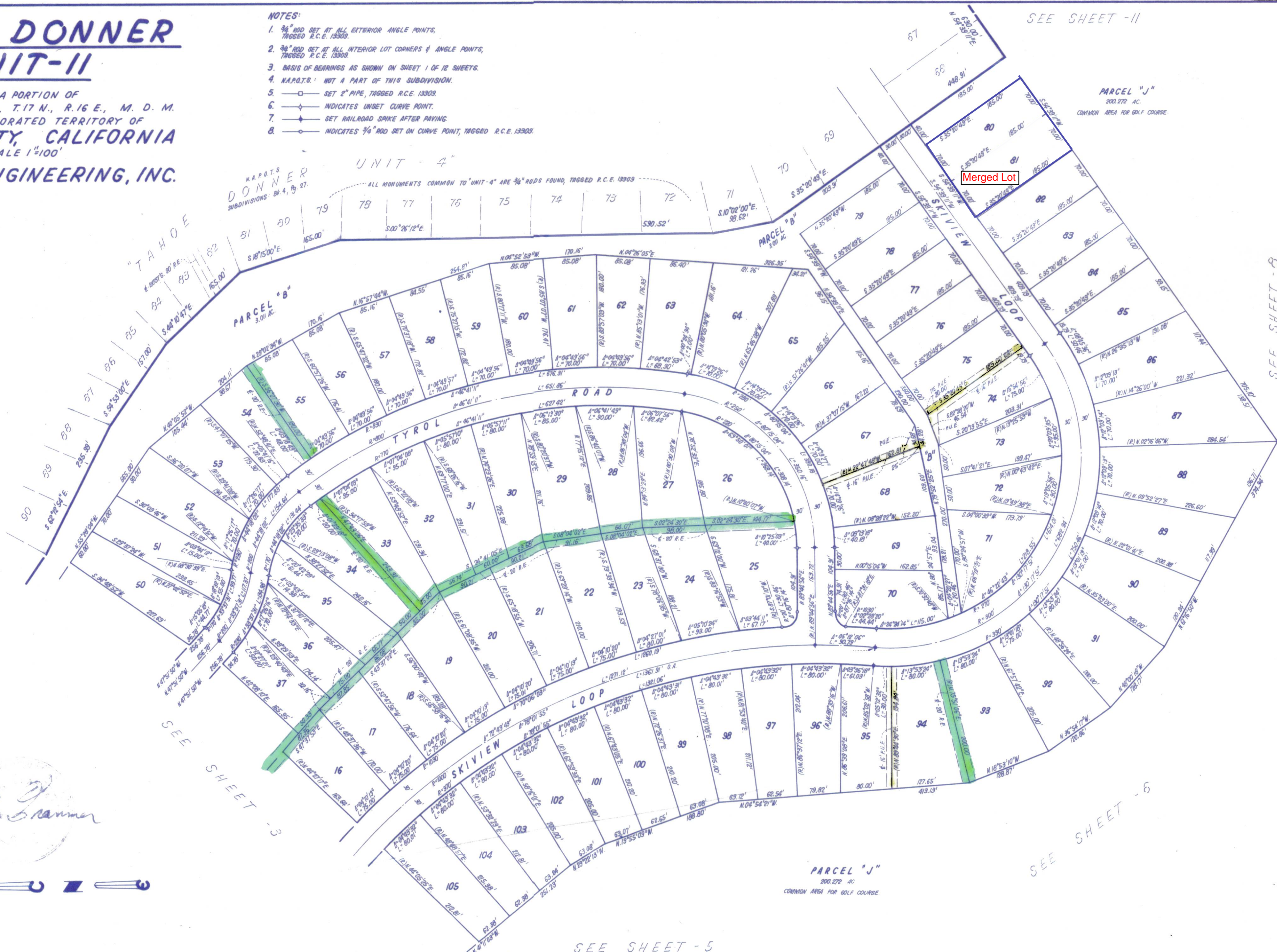
NOTES:

1. 3/4" ROD SET AT ALL EXTERIOR ANGLE POINTS, TAGGED R.C.E. 13303.
2. 3/4" ROD SET AT ALL INTERIOR LOT CORNERS & ANGLE POINTS, TAGGED R.C.E. 13303.
3. BASIS OF BEARINGS AS SHOWN ON SHEET 1 OF 12 SHEETS.
4. N.A.P.O.T.S.: NOT A PART OF THIS SUBDIVISION.
5. —○— SET 2" PIPE, TAGGED R.C.E. 13303.
6. —◇— INDICATES UNSHED CURVE POINT.
7. —◆— SET RAILROAD SPIKE AFTER PAVING.
8. —○— INDICATES 3/4" ROD SET ON CURVE POINT, TAGGED R.C.E. 13303.

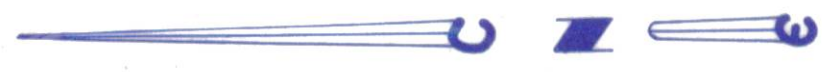
N.A.P.O.T.S.
DONNER
SUBDIVISIONS: BK. 4, PG. 27

UNIT - 4"

ALL MONUMENTS COMMON TO UNIT-4 ARE 3/4" RODS FOUND, TAGGED R.C.E. 13303



Ken R. Cranmer



UNIT II - 4

143 144 145 146 147
SHEET 4 OF 12 SHEETS

L.G.W.

R-11