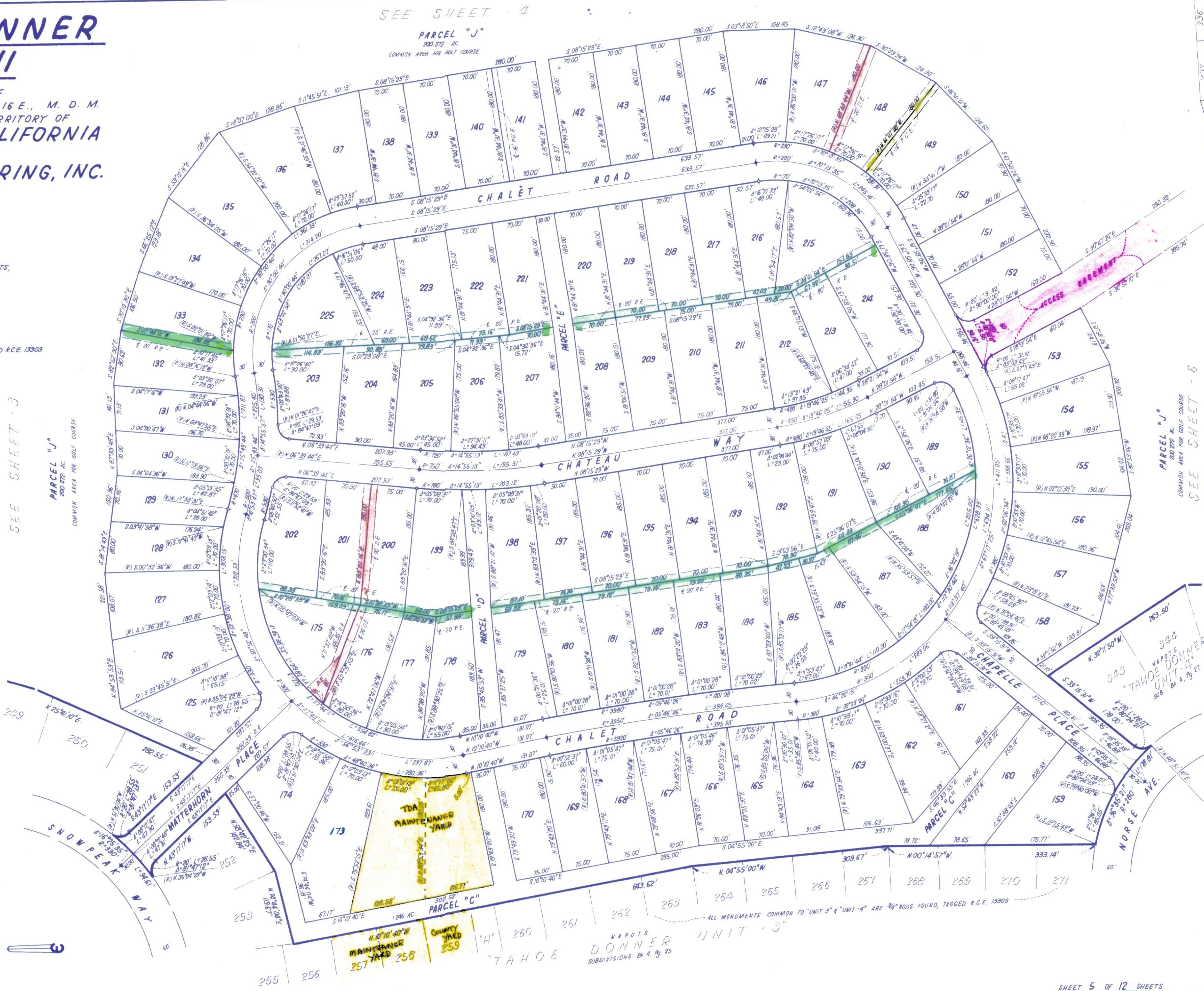


# TAHOE DONNER UNIT-II

BEING A PORTION OF  
SECTION 5, 6, & 7, T.17 N., R.16 E., M. D. M.  
IN THE UNINCORPORATED TERRITORY OF  
NEVADA COUNTY, CALIFORNIA  
SCALE 1"=100'  
CRANMER ENGINEERING, INC.

### NOTES:

1. 3/4" ROD SET AT ALL EXTERIOR ANGLE POINTS, TAGGED R.C.E. 13309.
2. 3/4" ROD SET AT ALL INTERIOR LOT CORNERS & ANGLE POINTS, TAGGED R.C.E. 13309.
3. BASIS OF BEARINGS AS SHOWN ON SHEET 1 OF 12 SHEETS
4. N.A.P.O.T.S.: NOT A PART OF THIS SUBDIVISION.
5. SET 2" PIPE, TAGGED R.C.E. 13309
6. INDICATES UNSET CURVE POINT
7. SET RAILROAD SPIKE AFTER PAVING
8. INDICATES 3/4" ROD SET ON CURVE POINT, TAGGED R.C.E. 13309



*Handwritten signature: Cranmer*

ALL MONUMENTS COMMON TO UNIT-3 & UNIT-4 ARE 3/4" RODS FOUND, TAGGED R.C.E. 13309  
N.A.P.O.T.S. DONNER UNIT-3  
SUBDIVISIONS BK 4, PG 25

T.A.H.O.E. DONNER UNIT II