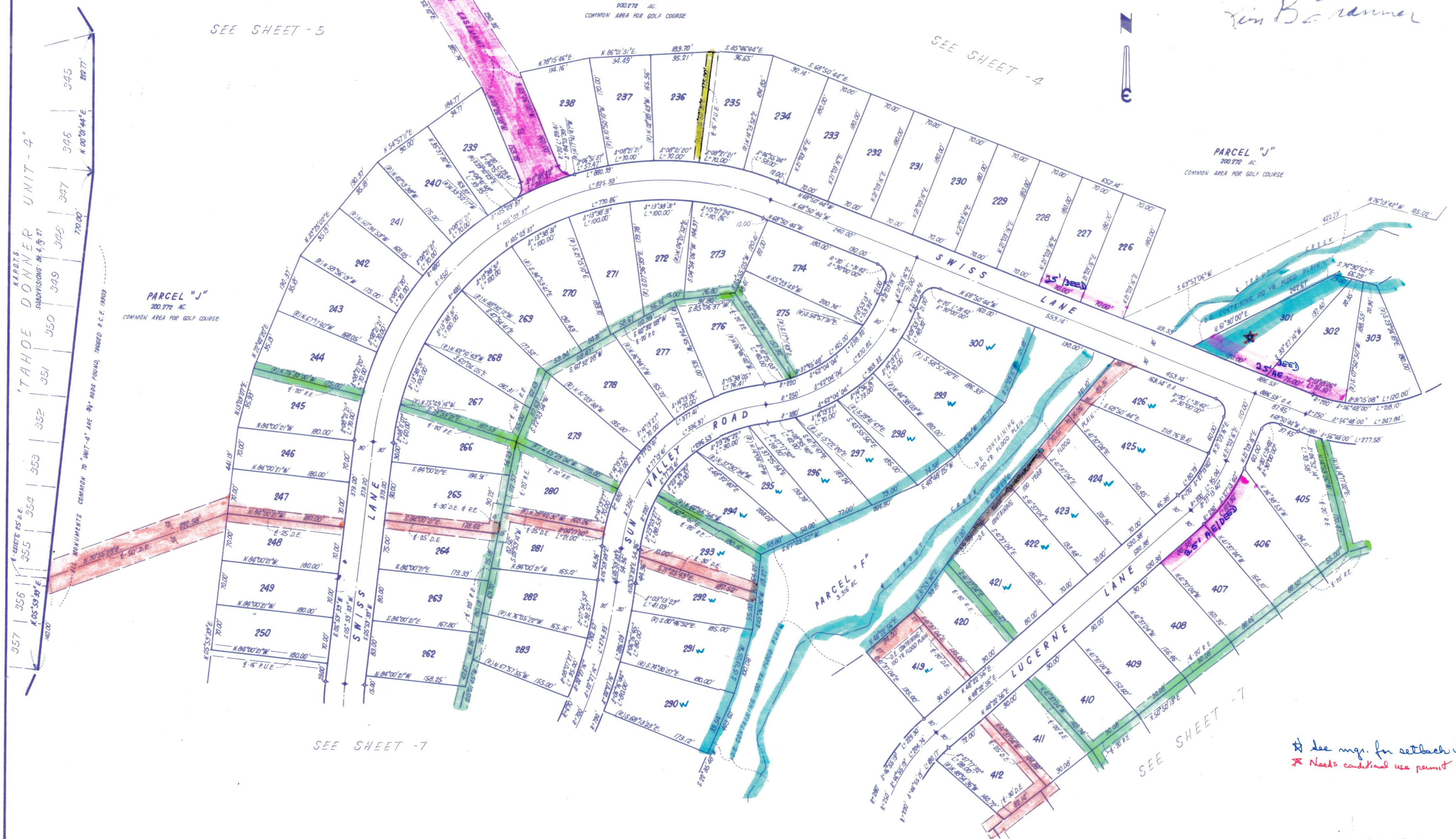


# TAHOE DONNER UNIT-II

BEING A PORTION OF  
SECTION 5, 6, & 7, T.17 N., R.16 E., M. D. M.  
IN THE UNINCORPORATED TERRITORY OF  
NEVADA COUNTY, CALIFORNIA  
SCALE 1"=100'  
CRANMER ENGINEERING, INC.

- NOTES:
1. 3/4" ROD SET AT ALL EXTERIOR ANGLE POINTS, TAGGED R.C.E. 13309.
  2. 3/4" ROD SET AT ALL INTERIOR LOT CORNERS & ANGLE POINTS, TAGGED R.C.E. 13309.
  3. BASIS OF BEARINGS AS SHOWN ON SHEET 1 OF 12 SHEETS.
  4. N.A.P.O.T.S.: NOT A PART OF THIS SUBDIVISION.
  5. SET 2" PIPE, TAGGED R.C.E. 13309.
  6. INDICATES UNSET CURVE POINT.
  7. SET RAILROAD SPIKE AFTER PAVING.
  8. INDICATES 3/4" ROD SET ON CURVE POINT, TAGGED R.C.E. 13309.

*Lin B. Cranmer*



SEE SHEET - 5

SEE SHEET - 4

SEE SHEET - 8

SEE SHEET - 7

SEE SHEET - 7

\* See mgs. for setback info  
\* Needs conditional use permit

UNIT II-6