

# TAHOE DONNER UNIT-II

BEING A PORTION OF  
SECTION 5, 6, & 7, T.17N., R.16E., M. D. M.  
IN THE UNINCORPORATED TERRITORY OF  
NEVADA COUNTY, CALIFORNIA  
SCALE 1"=100'

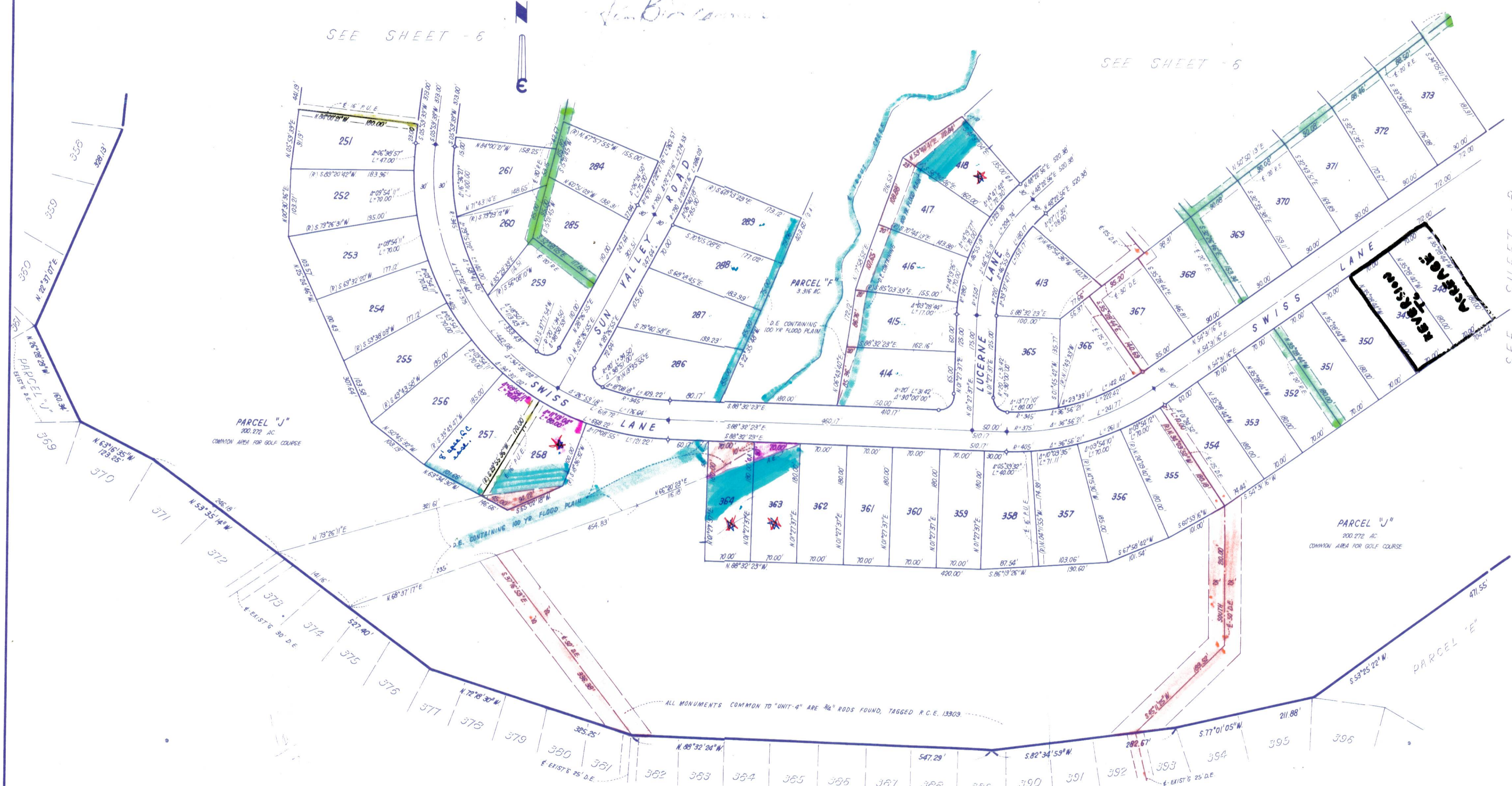
CRANMER ENGINEERING, INC.

- NOTES:
- 3/4" ROD SET AT ALL EXTERIOR ANGLE POINTS, TAGGED R.C.E. 13309.
  - 3/4" ROD SET AT ALL INTERIOR LOT CORNERS & ANGLE POINTS, TAGGED R.C.E. 13309.
  - BASIS OF BEARINGS AS SHOWN ON SHEET 1 OF 12 SHEETS.
  - N.A.P.O.T.S.: NOT A PART OF THIS SUBDIVISION.
  - SET 2" PIPE, TAGGED R.C.E. 13309.
  - ◇ INDICATES UNSET CURVE POINT.
  - ◆ SET RAILROAD SPIKE AFTER PAVING.
  - INDICATES 3/4" ROD SET ON CURVE POINT, TAGGED R.C.E. 13309.

*San Bernardino*

SEE SHEET - 6

SEE SHEET - 6



PARCEL "J"  
200.272 AC  
COMMON AREA FOR GOLF COURSE

PARCEL "F"  
3.316 AC  
D.E. CONTAINING  
100 YR FLOOD PLAIN

PARCEL "U"  
200.272 AC  
COMMON AREA FOR GOLF COURSE

ALL MONUMENTS COMMON TO "UNIT-4" ARE 3/4" RODS FOUND, TAGGED R.C.E. 13309

TAHOE DONNER UNIT - 2  
SUBDIVISIONS BK 4, 19, 27

See mgr. info on setbacks  
\* Needs conditional use permit