

TAHOE DONNER UNIT-II

BEING A PORTION OF
SECTION 5, 6, & 7, T.17 N., R.16 E., M. D. M.
IN THE UNINCORPORATED TERRITORY OF
NEVADA COUNTY, CALIFORNIA
SCALE 1"=100'

CRANMER ENGINEERING, INC.

- NOTES:
1. 3/4" ROD SET AT ALL EXTERIOR ANGLE POINTS, TAGGED R.C.E. 13309.
 2. 3/4" ROD SET AT ALL INTERIOR LOT CORNERS & ANGLE POINTS, TAGGED R.C.E. 13309.
 3. BASIS OF BEARINGS AS SHOWN ON SHEET 1 OF 12 SHEETS.
 4. N.A.P.O.T.S. NOT A PART OF THIS SUBDIVISION.
 5. □ SET 2" PIPE, TAGGED R.C.E. 13309.
 6. ○ INDICATES UNSET CURVE POINT.
 7. ⊕ SET RAILROAD SPIKE AFTER PAVING.
 8. ⊙ INDICATES 3/4" ROD SET ON CURVE POINT, TAGGED R.C.E. 13309.

SEE SHEET - 4

PARCEL "J"
200.272 AC.
COMMON AREA FOR GOLF COURSE

SEE SHEET - 6

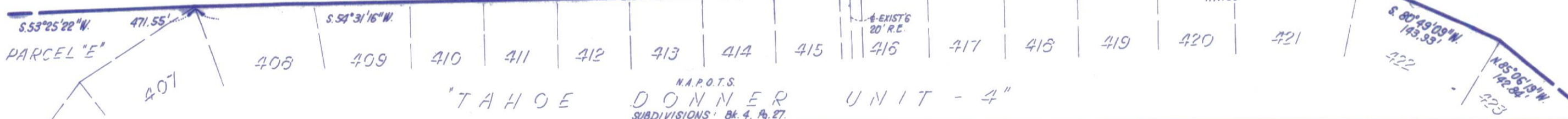
SEE SHEET - 11



PARCEL "J"
200.272 AC.
COMMON AREA FOR GOLF COURSE

PARCEL "J"
200.272 AC.
COMMON AREA FOR GOLF COURSE

ALL MONUMENTS COMMON TO UNIT-4 ARE 3/4" RODS FOUND, TAGGED R.C.E. 13309



TAHOE DONNER
SUBDIVISIONS' BK. 4, P. 27

SEE SHEET - 11

SHEET 8 OF 12 SHEETS

UNIT 11-8

L.6.W.
F9-11