

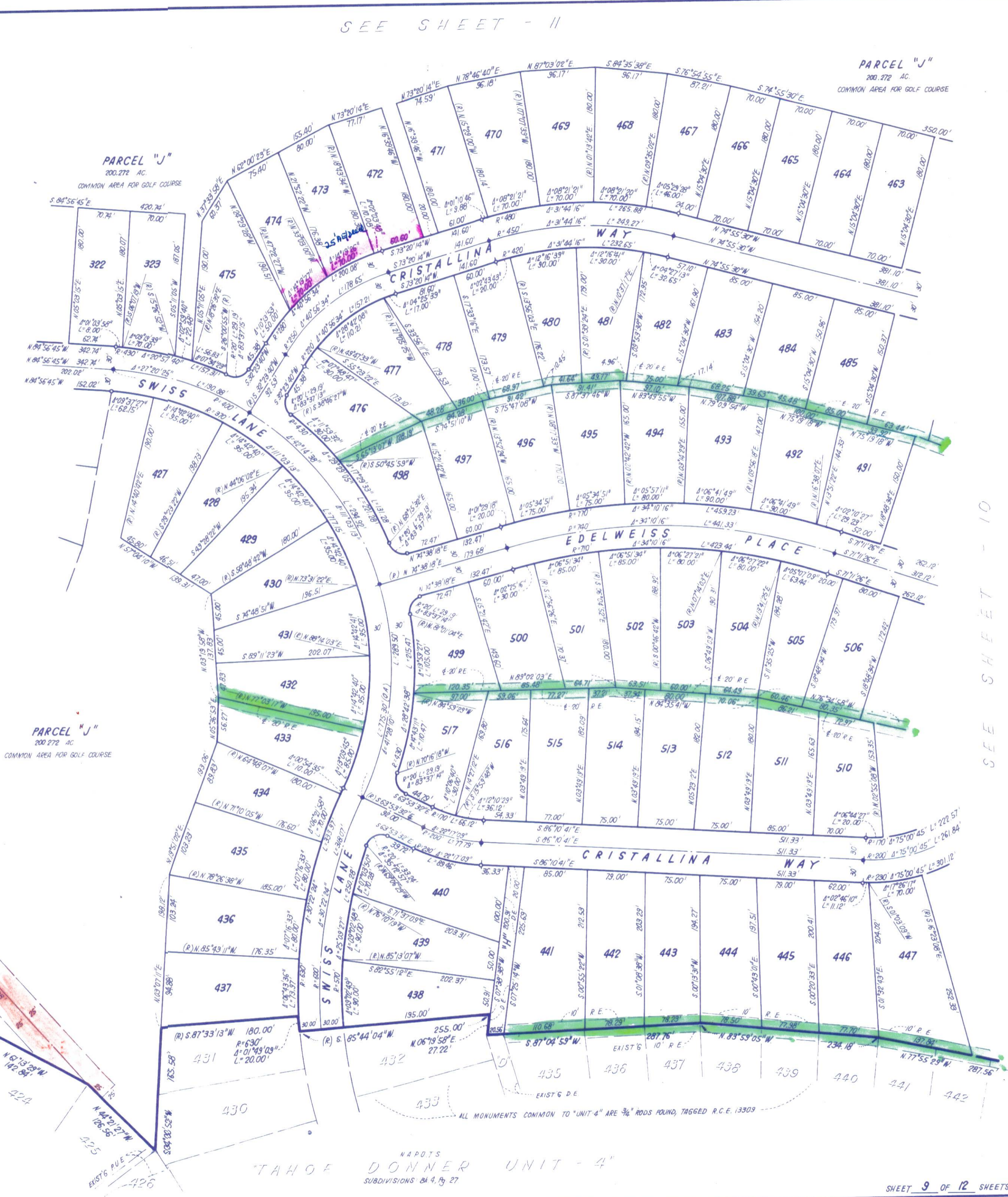
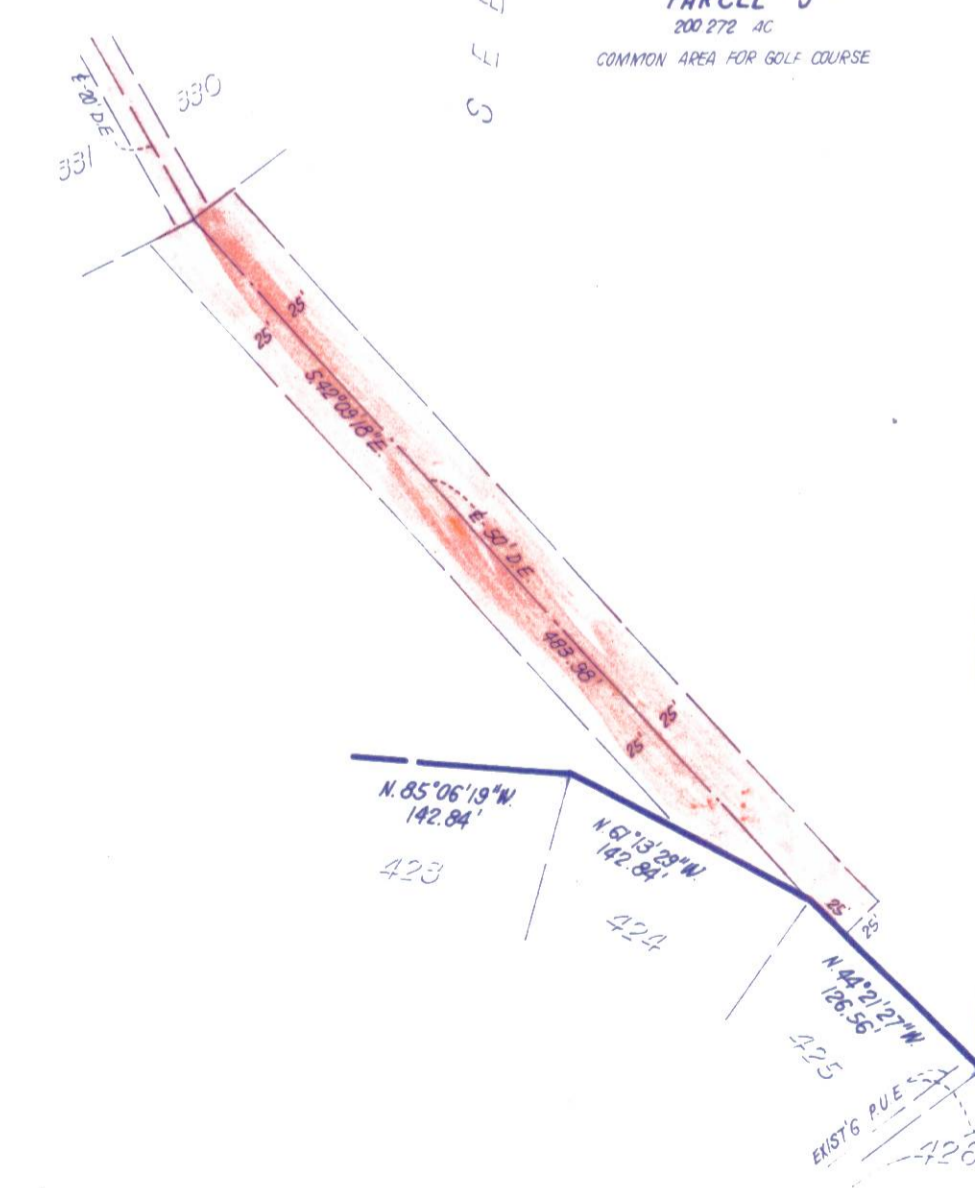
TAHOE DONNER UNIT-II

BEING A PORTION OF
SECTION 5, 6, & 7, T.17 N., R.16 E., M. D. M.
IN THE UNINCORPORATED TERRITORY OF
NEVADA COUNTY, CALIFORNIA
SCALE 1"=100'
CRANMER ENGINEERING, INC.

NOTES:

1. 3/4" ROD SET AT ALL EXTERIOR ANGLE POINTS, TAGGED R.C.E. 13309.
2. 3/4" ROD SET AT ALL INTERIOR LOT CORNERS & ANGLE POINTS, TAGGED R.C.E. 13309.
3. BASIS OF BEARINGS AS SHOWN ON SHEET 1 OF 12 SHEETS.
4. N.A.P.O.T.S.: NOT A PART OF THIS SUBDIVISION.
5. SET 2" PIPE, TAGGED R.C.E. 13309.
6. INDICATES UNSET CURVE POINT.
7. SET RAILROAD SPIKE AFTER PAVING.
8. INDICATES 3/4" ROD SET ON CURVE POINT, TAGGED R.C.E. 13309.

Jim Cranmer



SEE SHEET - 11

PARCEL "J"
200.272 AC.
COMMON AREA FOR GOLF COURSE

PARCEL "J"
200.272 AC.
COMMON AREA FOR GOLF COURSE

PARCEL "J"
200.272 AC.
COMMON AREA FOR GOLF COURSE

ALL MONUMENTS COMMON TO "UNIT-4" ARE 3/4" RODS ROUND, TAGGED R.C.E. 13309

TAHOE DONNER UNIT - 4"
SUBDIVISIONS 84, 4, 19, 27

SHEET 9 OF 12 SHEETS

UNIT II-1

SEE SHEET - 10

L.G.W.

F3-11