

TAHOE DONNER UNIT-II

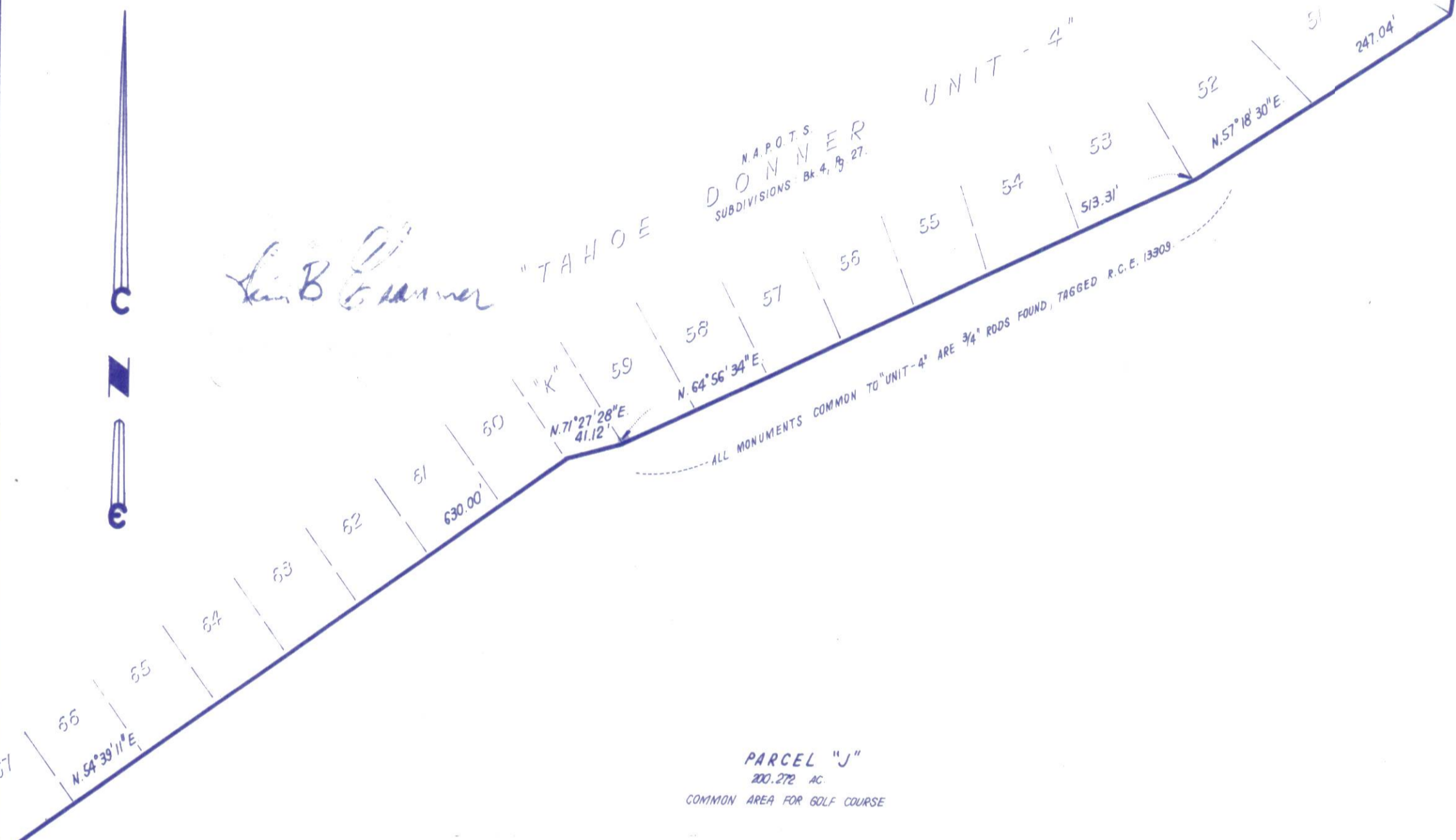
BEING A PORTION OF
SECTION 5, 6, & 7, T.17 N., R.16 E., M. D. M.
IN THE UNINCORPORATED TERRITORY OF
NEVADA COUNTY, CALIFORNIA
SCALE 1"=100'
CRANMER ENGINEERING, INC.

NOTES:

1. 3/4" ROD SET AT ALL EXTERIOR ANGLE POINTS, TAGGED R.C.E. 13309.
2. 3/4" ROD SET AT ALL INTERIOR LOT CORNERS & ANGLE POINTS, TAGGED R.C.E. 13309.
3. BASIS OF BEARINGS AS SHOWN ON SHEET 1 OF 12 SHEETS.
4. N.A.P.O.T.S.: NOT A PART OF THIS SUBDIVISION.
5. SET 2" PIPE, TAGGED R.C.E. 13309.
6. INDICATES UNSET CURVE POINT.
7. SET RAILROAD SPIKE AFTER PAVING.
8. INDICATES 3/4" ROD SET ON CURVE POINT, TAGGED R.C.E. 13309.



Ken B. Cranmer

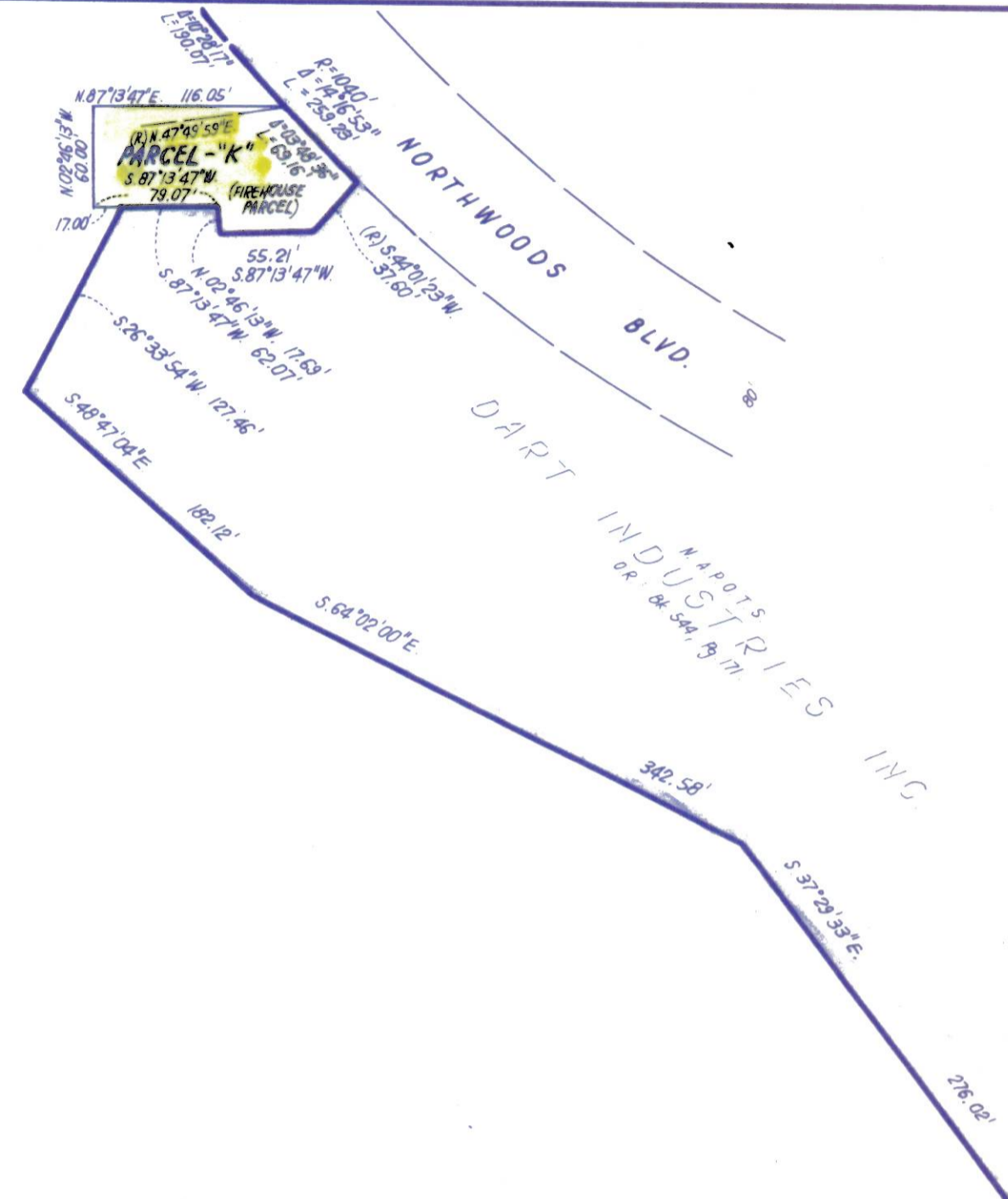


PARCEL "J"
200.272 AC
COMMON AREA FOR GOLF COURSE

SEE SHEET - 12

PARCEL "J"

200.272 AC
COMMON AREA FOR GOLF COURSE

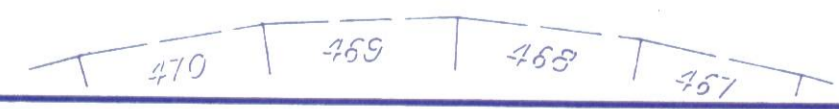
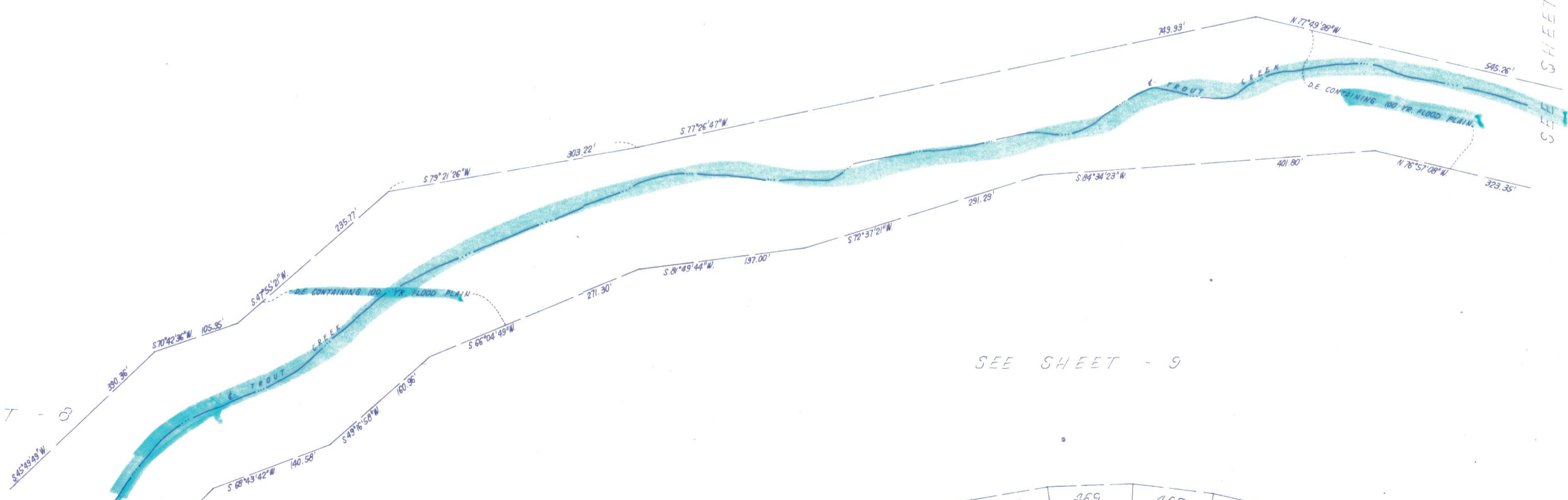


SEE SHEET - 4

SEE SHEET - 10

SEE SHEET - 8

SEE SHEET - 9



SHEET 11 OF 12 SHEETS

UNIT II - II

L.6.W.
P.9-II