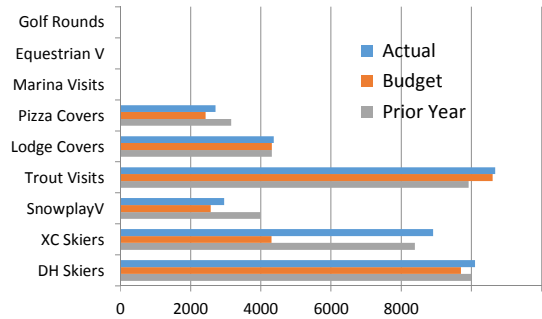
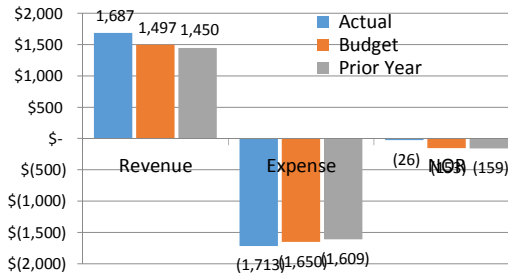




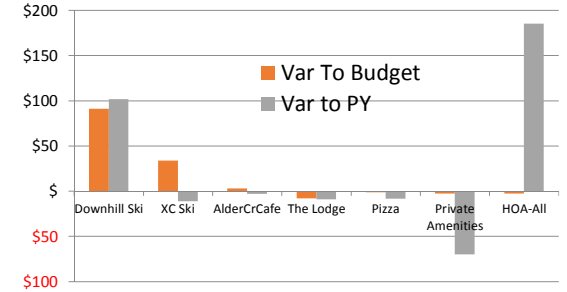
Month | Operating Volumes March 2019



Month | Operating Fund Results March 2019



Month | Key NOR Variances March 2019



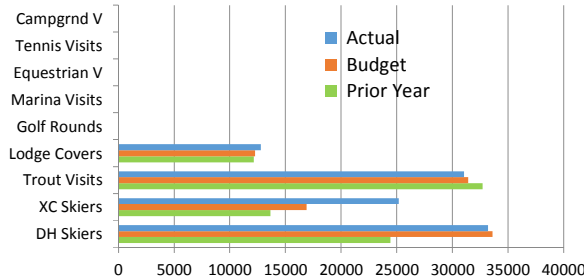
March Revenue: \$1,687,309

190,309/13% fav to Bdg and 236,817/16% fav to PY

March NOR: -\$26,123

126,877/83% fav to Bdg and 132,582/84% fav to PY

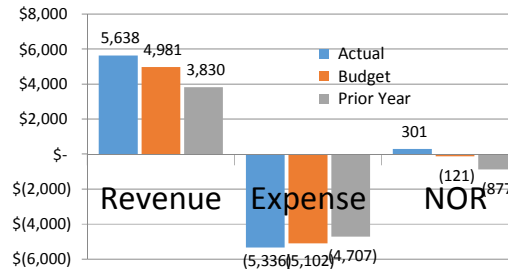
YTD | Volumes For the three months ending March 2019



March YTD Revenue: \$5,637,572

656,572/13% fav to Bdg and 1,807,698/47% fav to PY

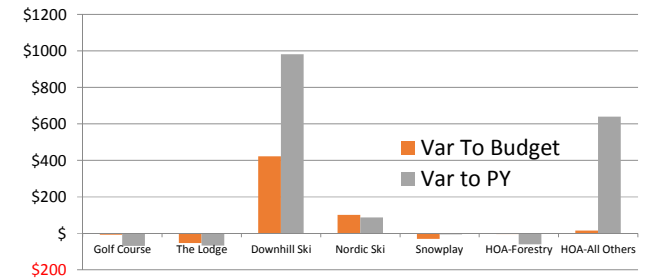
YTD | Operating Fund Results For the three months ending March 2019



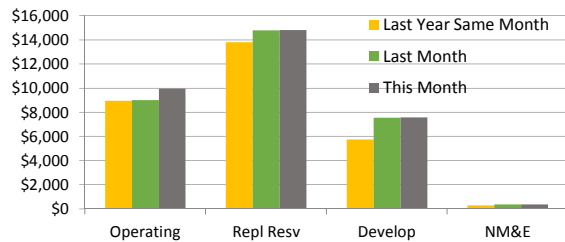
March YTD NOR: \$301,208

422,208/349% fav to Bdg and 1,178,204/134% fav to PY

YTD | Key NOR Variances For the three months ending March 2019

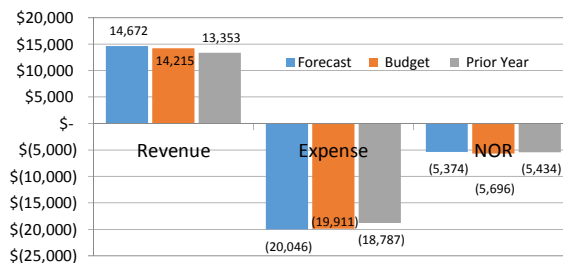


Cash & Investments Balances, as of month end:



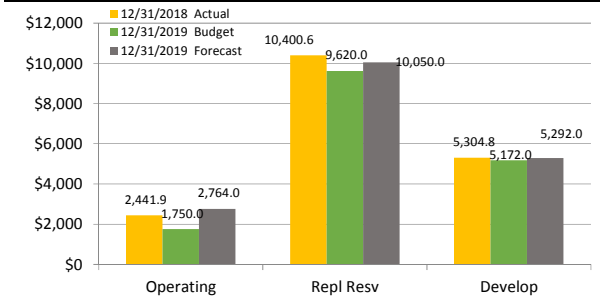
FORECAST ANNUAL 2019

Operating Fund | as of this report date



vs Budget: Revenue Fav 457,000/3% | NOR Fav 322,000/6%

Members Equity Balances as of Year End 12/31/xx



2019 Budget Metrics	TDA Revenue Mix		per Owner	Annual Assessment (AA)		AA Capital Contributions			Operating Fund Revenue Mix			
	AA Revenue	12,719,000		47%	880	45%	5,696,000	Operating Fund	720	66%	4,661,000 (37%)	ReplResv
Operating Rev	14,215,000	53%	1085	55%	7,023,000	Capital Funds	30	3%	194,000 (1%)	New Equip	14,215,000 (71%)	Op Rev
Total Revenue	26,934,000	100%	1965	100%	12,719,000	Annual Assesm TL	335	31%	2,168,000 (17%)	DevelopFd	19,911,000 (100%)	Total
\$23.3 Million Revenue Requirement / Budget			an increase from 2018 of \$65 or 3%, after 3yrs flat at \$1900									
						1085			100%		7,023,000 (55%) TL, Cap Fds	