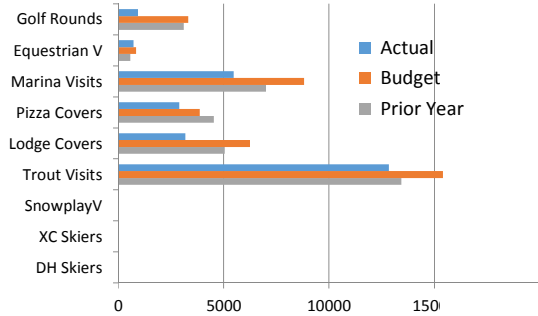
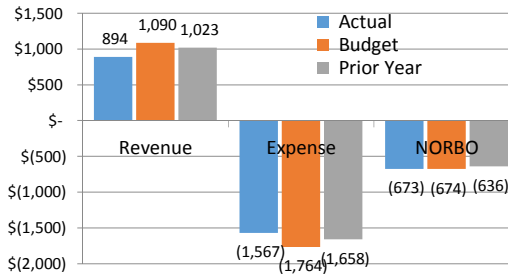




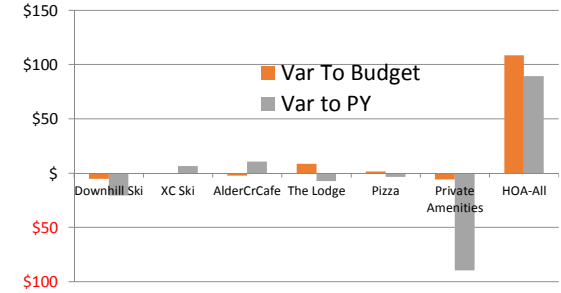
Month | Operating Volumes June 2019



Month | Operating Fund Results June 2019



Month | Key NOR Variances June 2019



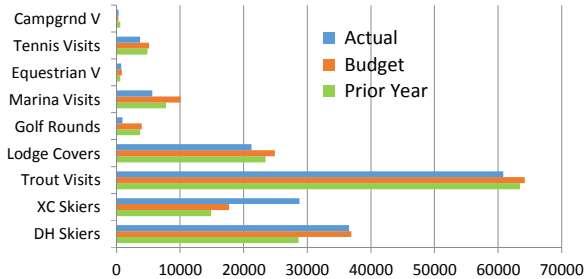
June Revenue: \$893,919

-196,081/-18% unfav to Bdg and -128,980/-13% unfav to PY

June NORBO: -\$673,068

0,932/0% fav to Bdg and -37,487/-6% unfav to PY

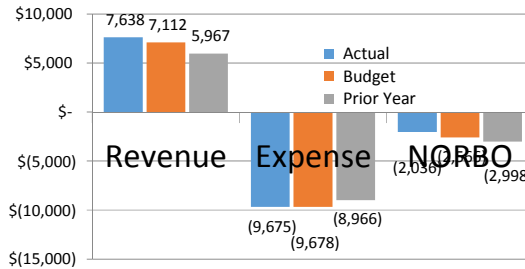
YTD | Volumes For the six months ending June 2019



June YTD Revenue: \$7,638,486

526,486/7% fav to Bdg and 1,671,082/28% fav to PY

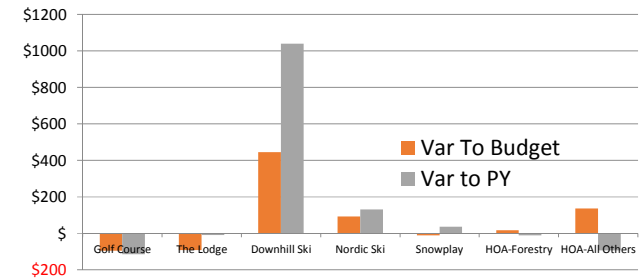
YTD | Operating Fund Results For the six months ending June 2019



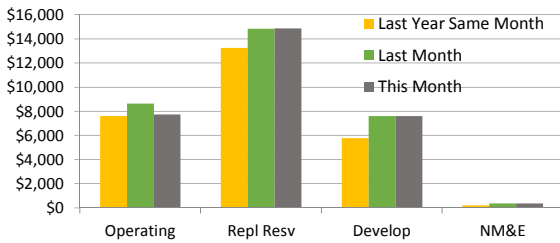
June YTD NORBO: -\$2,036,450

529,550/21% fav to Bdg and 961,845/32% fav to PY

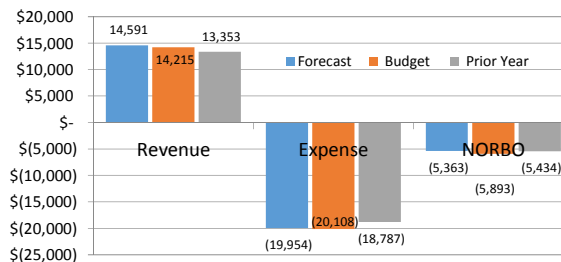
YTD | Key NOR Variances For the six months ending June 2019



Cash & Investments Balances, as of month end:

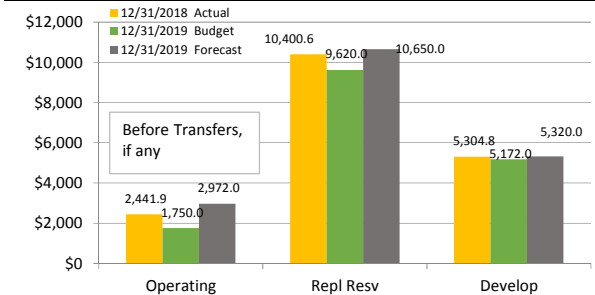


FORECAST ANNUAL 2019 Operating Fund | as of this report date



vs Budget: Revenue Fav 376,000/3% | NORBO Fav 530,000/9%

Members Equity Balances as of Year End 12/31/xx



NORBO = Net Operating Results Before Overhead Allocation

2019 Budget Metrics	TDA Revenue Mix		per Owner	Annual Assessment (AA)		AA Capital Contributions			Operating Fund Revenue Mix				
	Revenue	Percentage		Revenue	Percentage	Revenue	Percentage	Revenue	Percentage				
AA Revenue	12,719,000	47%	880	45%	5,696,000	Operating Fund	720	66%	4,661,000 (37%)	ReplResv	5,696,000 (29%)	AA Rev	
Operating Rev	14,215,000	53%	1085	55%	7,023,000	Capital Funds	30	3%	194,000 (1%)	New Equip	14,215,000 (71%)	Op Rev	
Total Revenue	26,934,000	100%	1965	100%	12,719,000	Annual Assesm TL	335	31%	2,168,000 (17%)	DevelopFd	19,911,000 (100%)	Total	
\$23.3 Million Revenue Requirement / Budget			an increase from 2018 of \$65 or 3%, after 3yrs flat at \$1900			1085			100%	7,023,000 (55%)	TL, Cap Fds		