

TAHOE DONNER FORESTRY UPDATE

BOARD OF DIRECTORS MEETING JULY 27, 2019

Presentation Outcomes

Highlight the Association's commitment to provide resources towards reducing the fire hazard in the area and forest health management

Provide defensible space programs update

Priority Areas

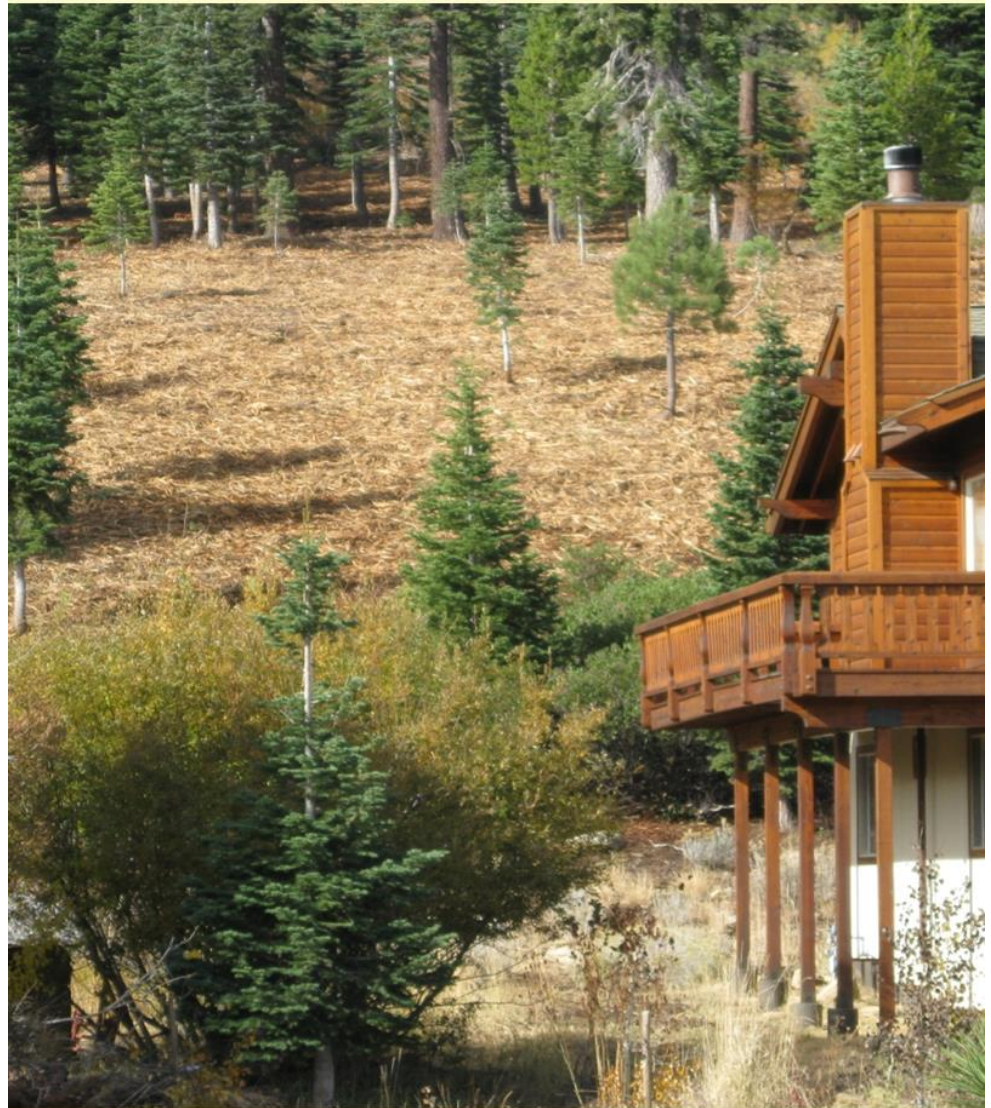
Create fuel reduction and forested zones within:

- Areas around homes (common areas).

- Southwestern border areas – prevailing winds out of the southwest.

- Areas of suitable topography and soil type.

- Areas along main access routes (system roads).



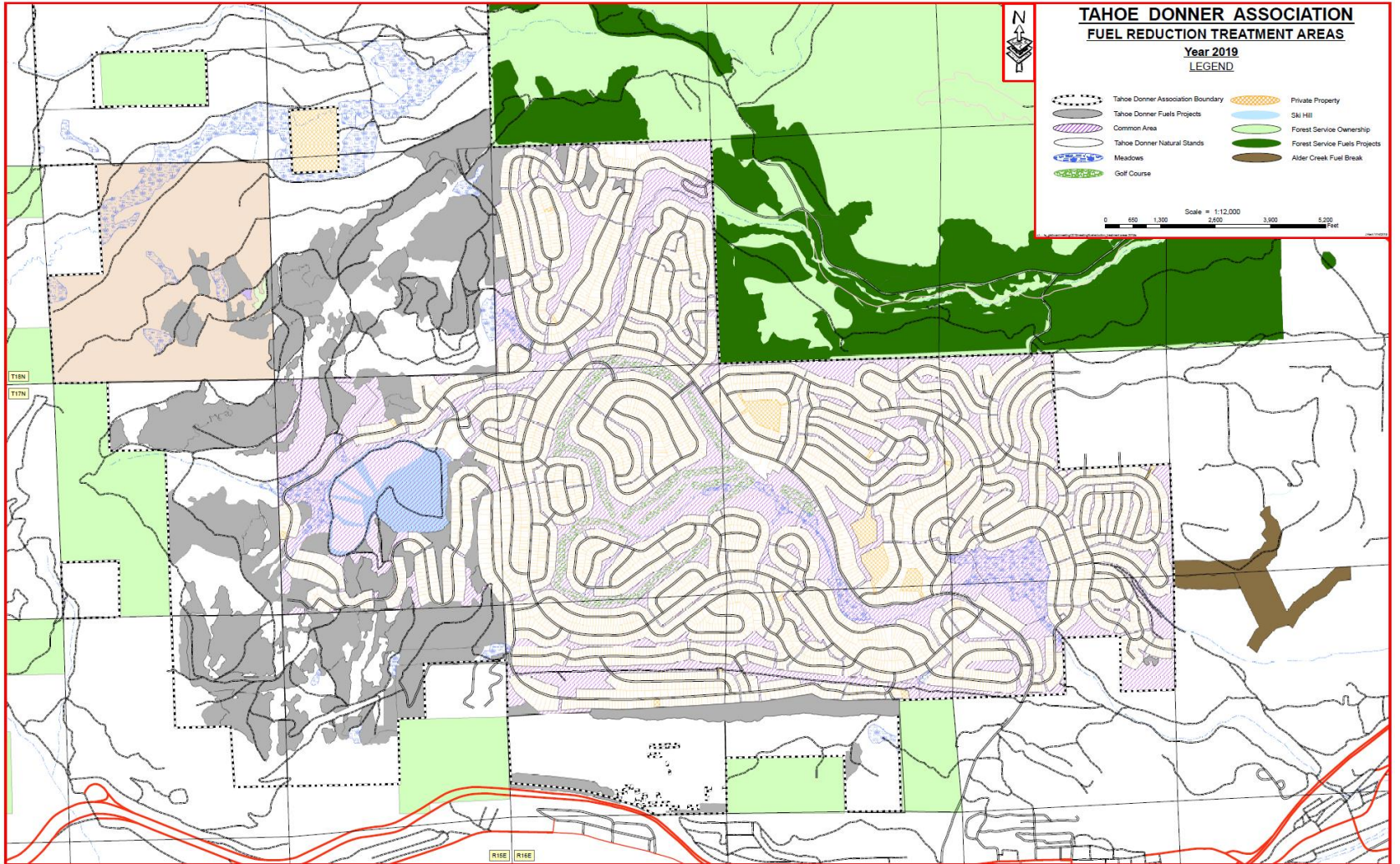


TAHOE DONNER ASSOCIATION FUEL REDUCTION TREATMENT AREAS

Year 2019
LEGEND

- | | | | |
|--|-----------------------------------|--|-------------------------------|
| | Tahoe Donner Association Boundary | | Private Property |
| | Tahoe Donner Fuels Projects | | SM Hill |
| | Common Area | | Forest Service Ownership |
| | Tahoe Donner Natural Stands | | Forest Service Fuels Projects |
| | Meadows | | Alder Creek Fuel Break |
| | Golf Course | | |

Scale = 1:12,000
0 600 1,300 2,600 3,900 5,200 Feet



Fire Hazard Reduction Zones

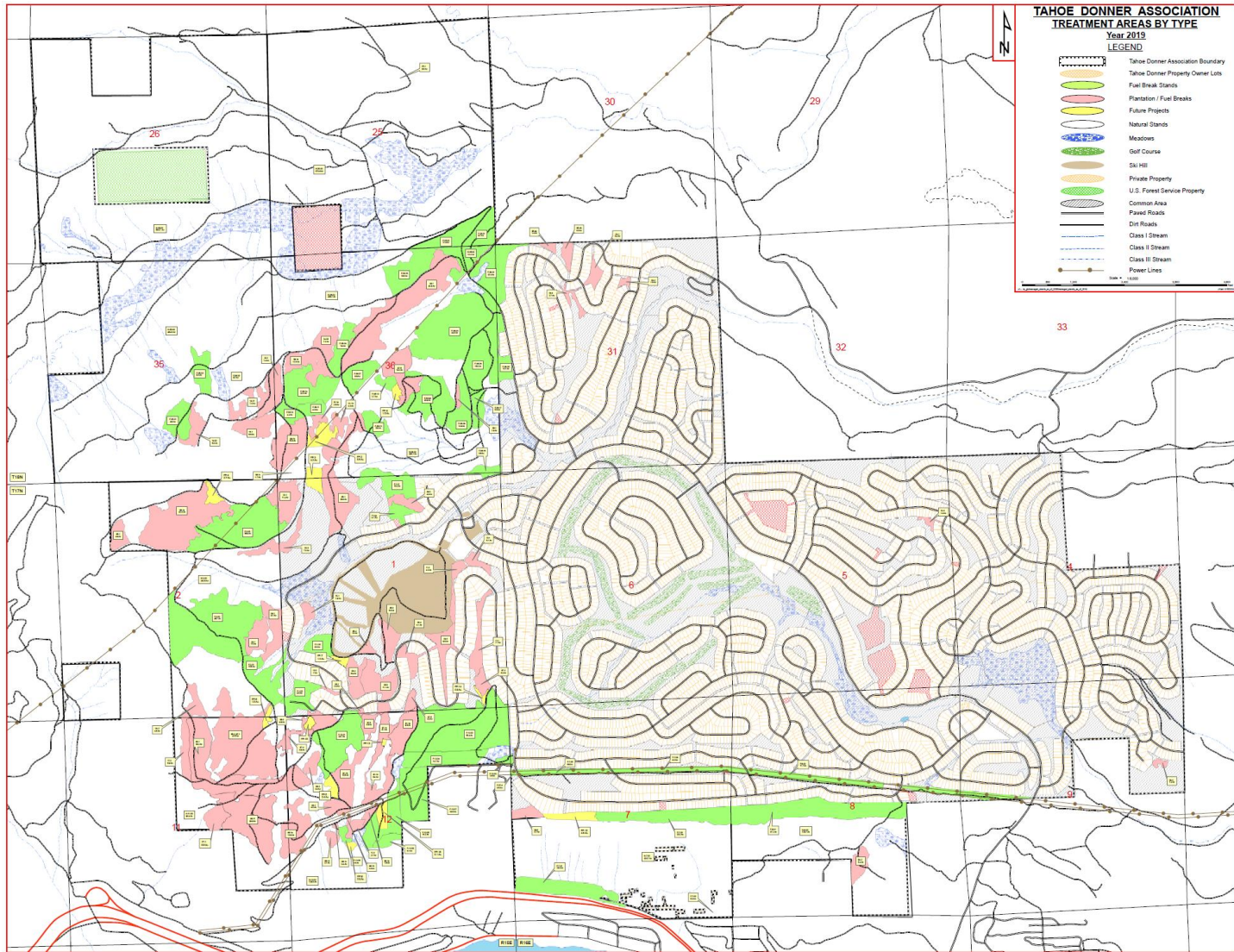
554 acres of
reforestation/fuel breaks

637 acres of fuel reduction
zones

1,338 acres of common
area with approximately
two-thirds for fuel
reduction

2,487 acres of “natural
stands”

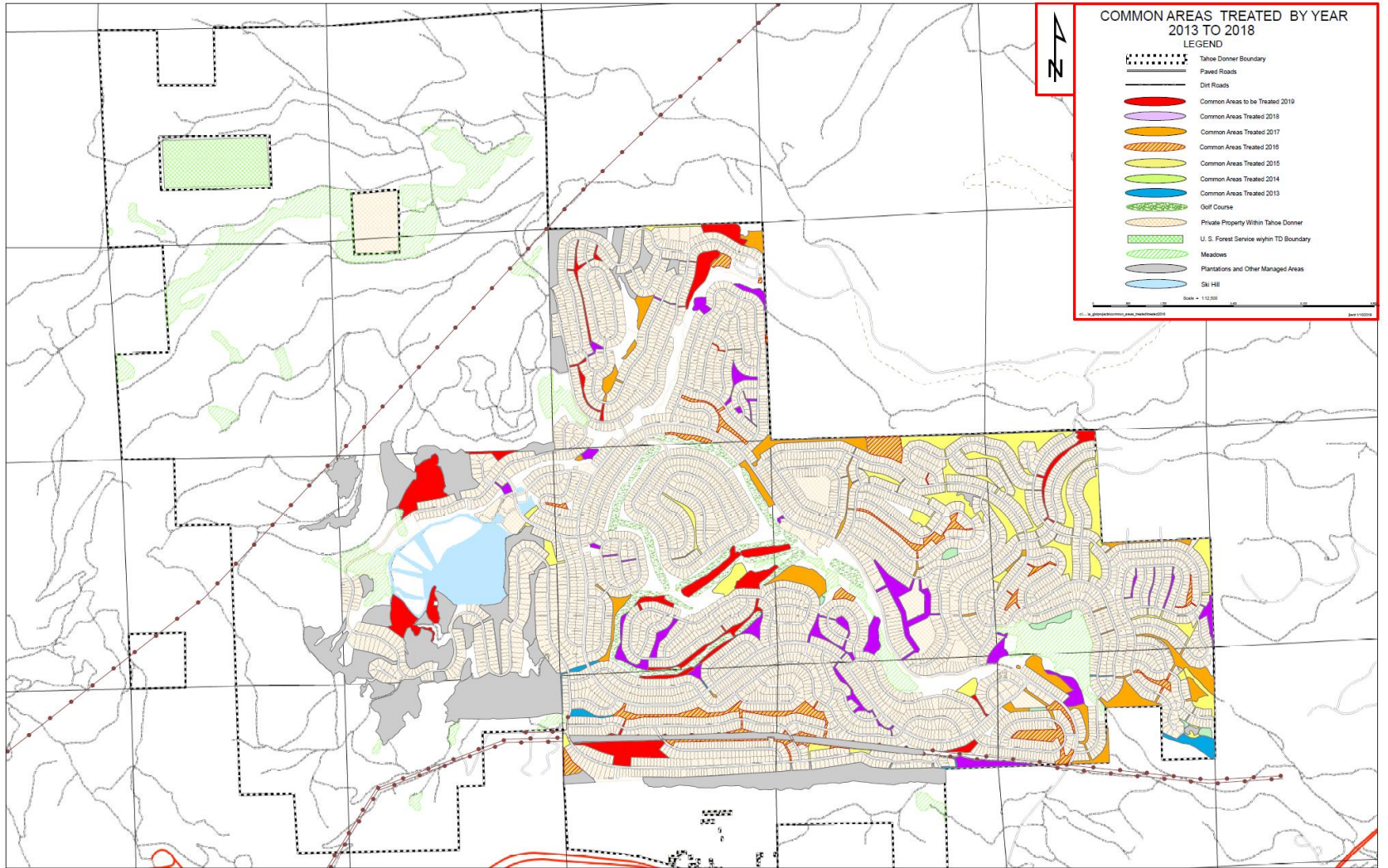


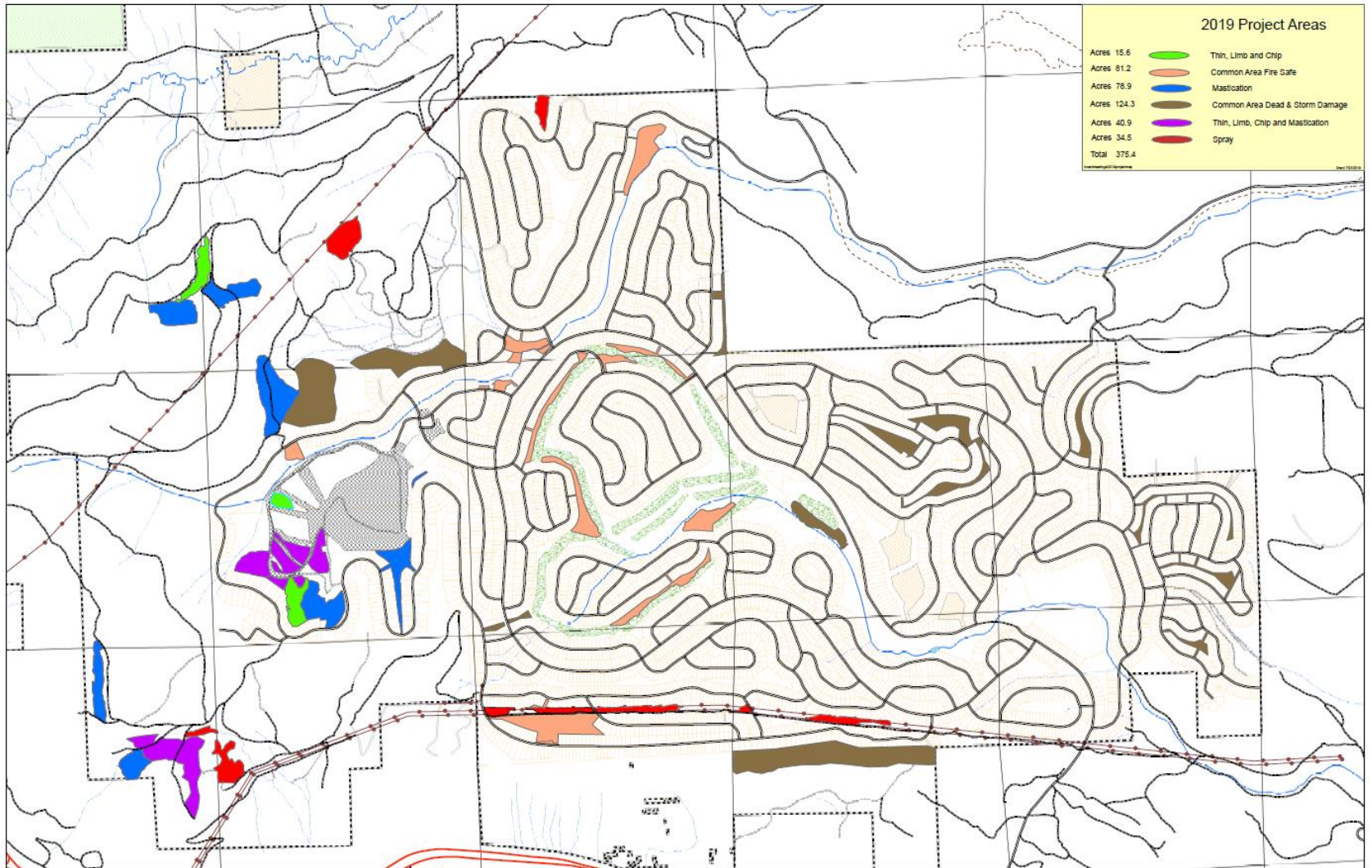


Acres Treated 2012 - 2018

YEAR	PROPERTY TYPE	ACRES TREATED	REMARKS
2013	Common area Plantation/FB	12.8 186.7	* South Skislope Way Fuel Break created, 58 acres 86.4 acres assisted by two grants and \$28,000 in additional funds approved by the Board of Directors.
2014	Common area Plantation/FB	8.5 82.8	Forestry reduction due to poor winter revenue. Dead trees on the rise in common areas.
2015	Common area Plantation/FB	116.2 34.7	Very dry year – little mastication due to fire danger. Removed 641 dead trees from the property.
2016	Common area Plantation/FB	73.9 143.5*	Contract labor costs doubled as bidding changed from a per/hour rate to a per/acre rate. *104.8 acres assisted by a grant. Removed 577 dead trees.
2017	Common area Plantation/FB	90.8 84.7*	Board of Directors approved \$150,000 in additional funds, \$62,710 to storm damage and common area work. * 26 acres assisted by two grants. Removed 593 dead trees.
2018	Common area Plantation/FB	84.1 143.8*	Board of Directors approved \$153,929 in additional funds for storm damage removal and common area work. *103 acres assisted by two grants.

Targets set in the 5-year plan - 100.2 acres of common area and 75 acres of fuel break management/year.





Drought Caused Tree Mortality

2015	641 trees
2016	577 trees
2017	593 trees
2018	1116 trees
2019 YTD	407 trees

Even after the two wet winters, forest pest management specialists agree that we will continue to see higher than normal tree mortality due to bark beetle activity.



Winter 2016/2017 Storm Damage

Entering the third
season of a
predicted 3-year
cleanup program





2018 Defensible Space Program Update

All of Unit 3 and portion of
Unit 5. Skislope Way,
Snowpeak/Slalom
area, and Copenhagen
area.

Inspected 984 properties –
59 passed / 925 failed

