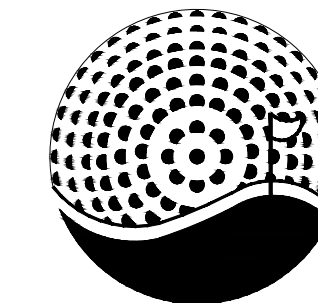


TAHOE DONNER GOLF COURSE

11509 NORTHWOOD BLVD.
TRUCKEE, CALIFORNIA 96161

GRADING PLAN
TEE & FAIRWAY REPAIR
MARCH 2019



CARY BICKLER, INC.
GOLF COURSE DESIGN

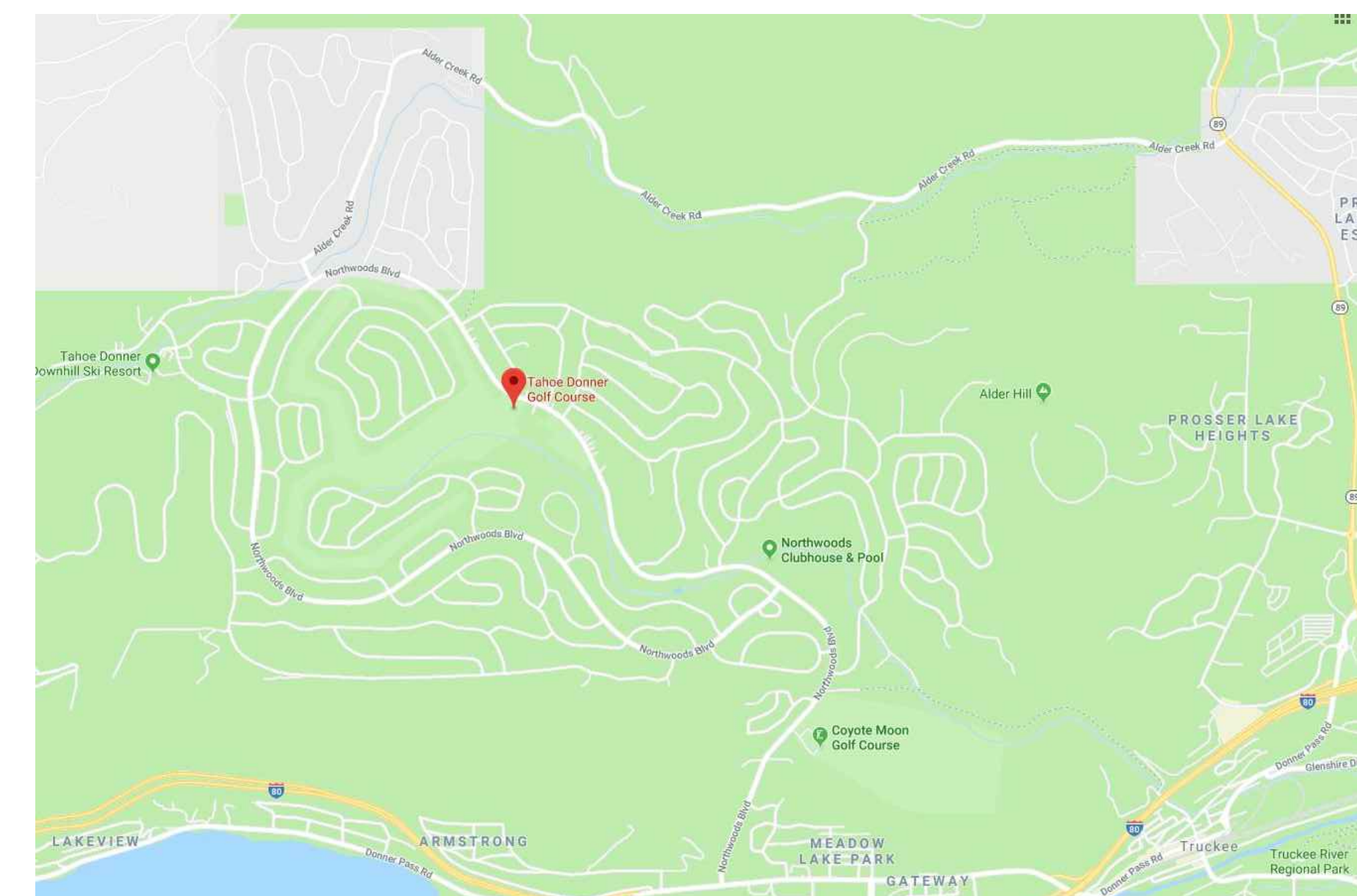
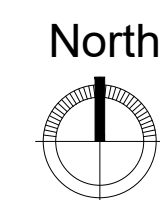
AMERICAN SOCIETY OF GOLF COURSE ARCHITECTS
1220 Rosecrans Street, Suite 314
San Diego, California 92106

Phone: (619) 223-3240
E-mail: cb@bickler.com

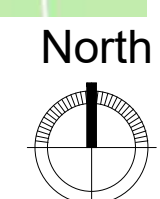
Fax: (619) 221-5999
Web Site: www.bickler.com

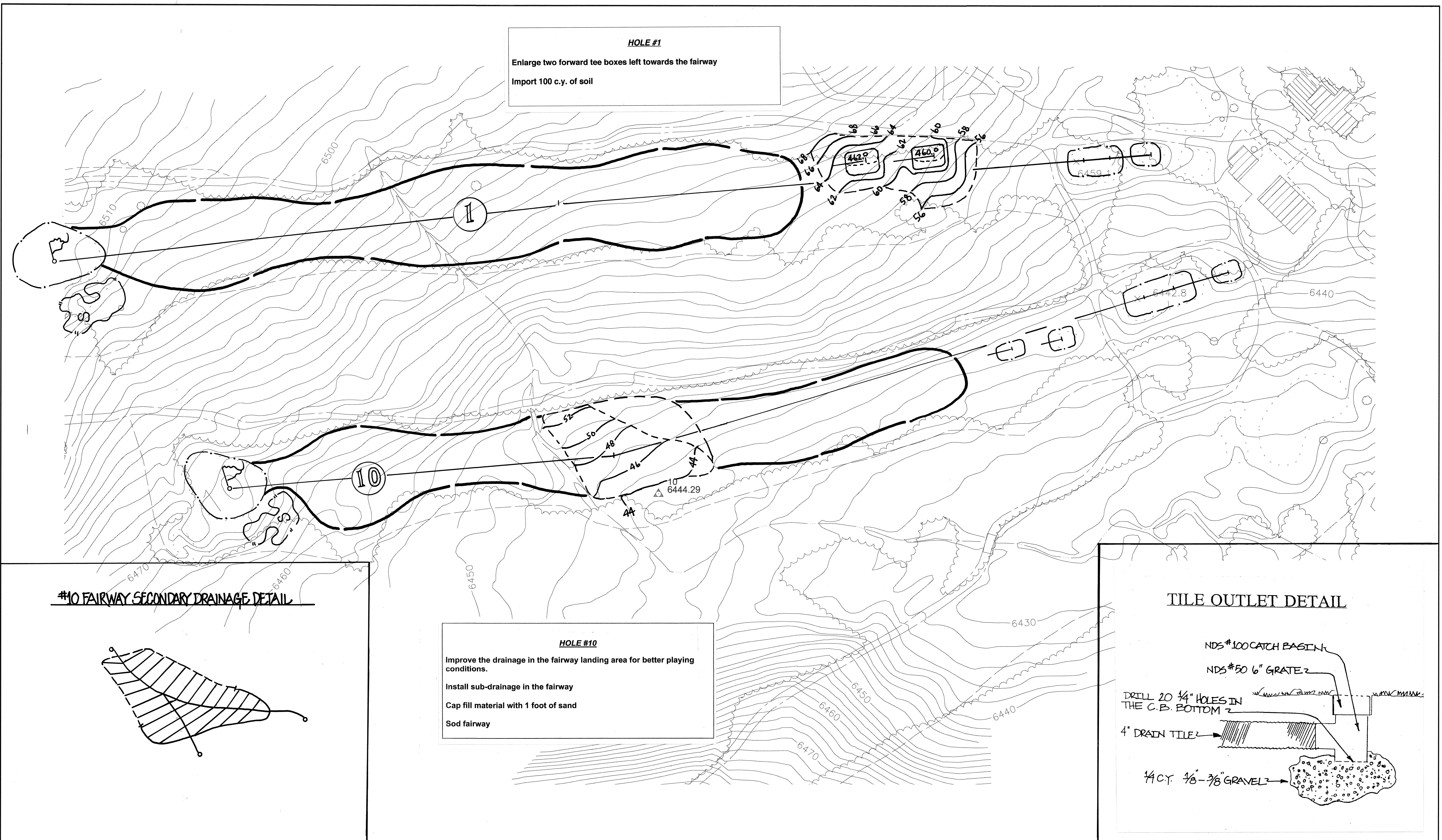


COURSE LAYOUT



VICINTY MAP

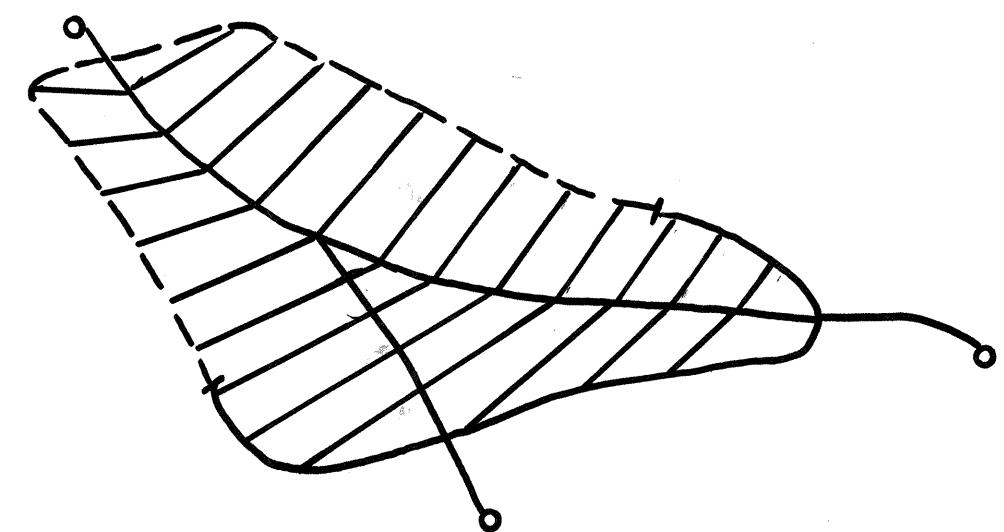




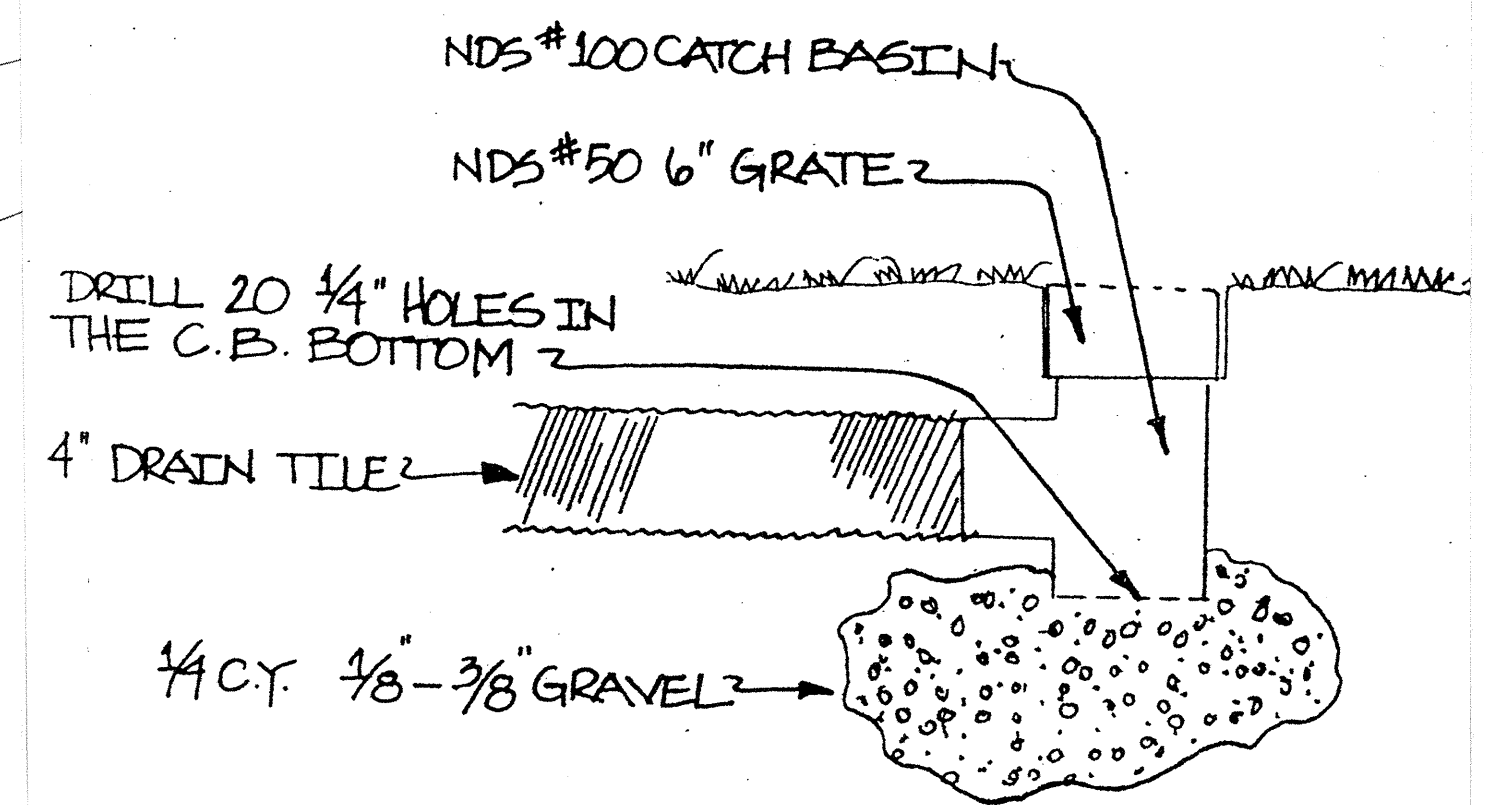
HOLE #1
Enlarge two forward tee boxes left towards the fairway
Import 100 c.y. of soil

HOLE #10
Improve the drainage in the fairway landing area for better playing conditions.
Install sub-drainage in the fairway
Cap fill material with 1 foot of sand
Sod fairway

#10 FAIRWAY SECONDARY DRAINAGE DETAIL

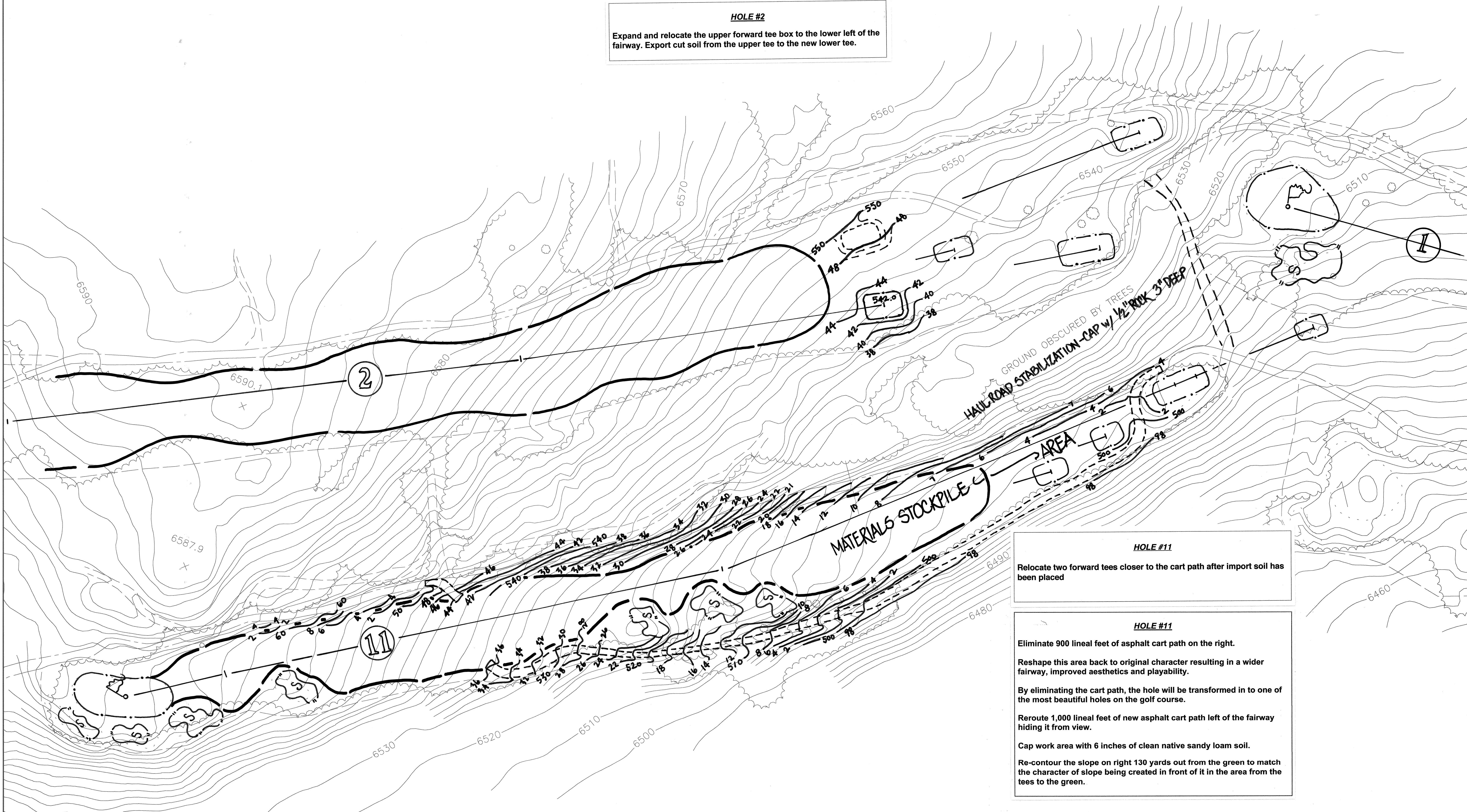


TILE OUTLET DETAIL



HOLE #2

Expand and relocate the upper forward tee box to the lower left of the fairway. Export cut soil from the upper tee to the new lower tee.



HOLE #11

Relocate two forward tees closer to the cart path after import soil has been placed

HOLE #11

Eliminate 900 lineal feet of asphalt cart path on the right.

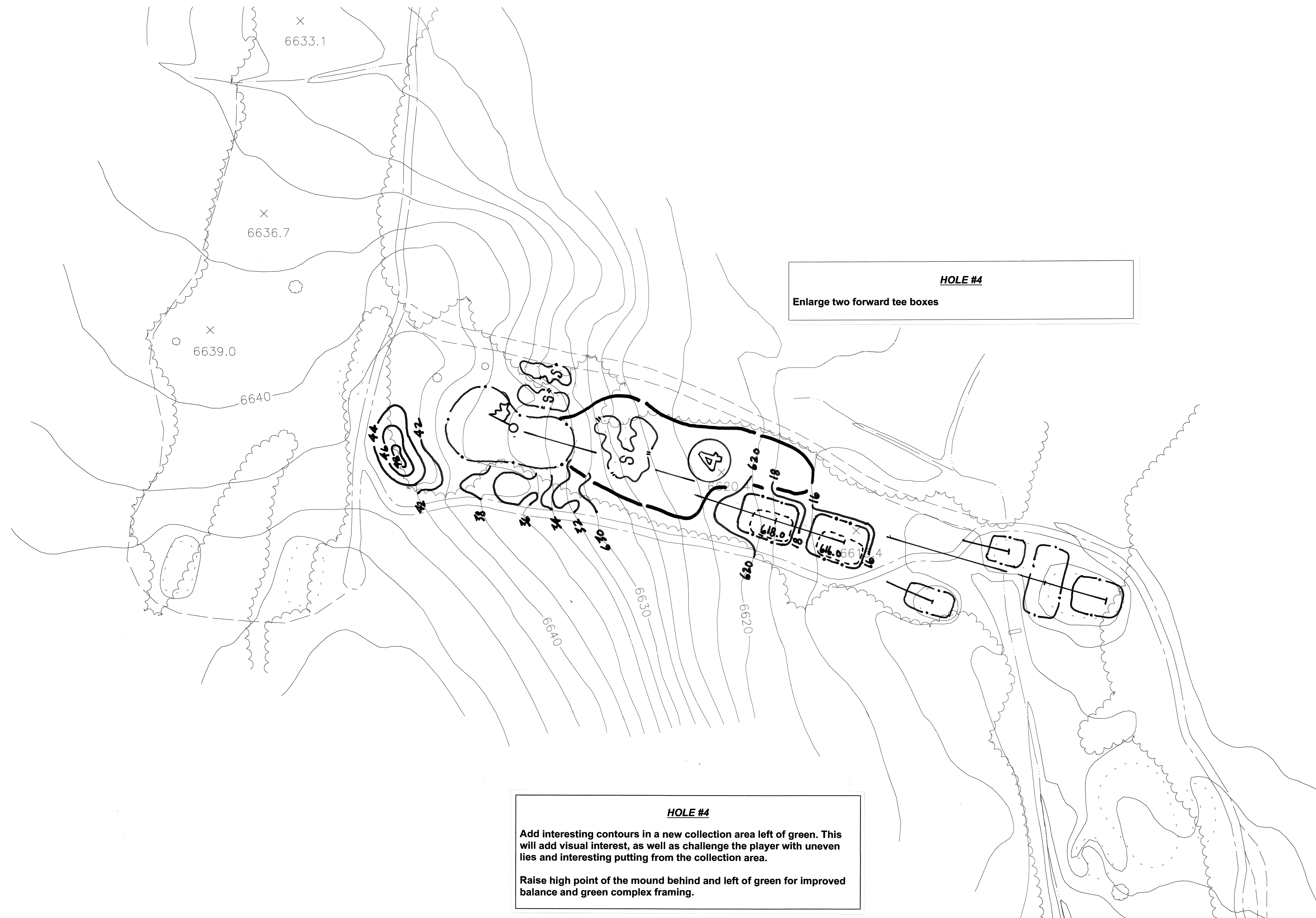
Reshape this area back to original character resulting in a wider fairway, improved aesthetics and playability.

By eliminating the cart path, the hole will be transformed in to one of the most beautiful holes on the golf course.

Reroute 1,000 lineal feet of new asphalt cart path left of the fairway hiding it from view.

Cap work area with 6 inches of clean native sandy loam soil.

Re-contour the slope on right 130 yards out from the green to match the character of slope being created in front of it in the area from the tees to the green.



Enlarge two forward tees

MAX HEIGHT 3'-8"

This will also help disguise the cart path from view at the tee

MARCH 2019

HOLE #16

Widen the back tee at Hole #16 approximately 15 feet towards the cart path. Install a concrete block retaining wall and stairs between the tee and the cart path. Cover with native stone veneer (to be found on-site).

Improve golf cart traffic wear and tear on the right side of the fairway, short right of the green. Regrade the fairway subgrade (minus 2 inches) and cap with 4 inches of sand.

Widen the Hole #16 back tee approximately 15 feet toward the cart path.

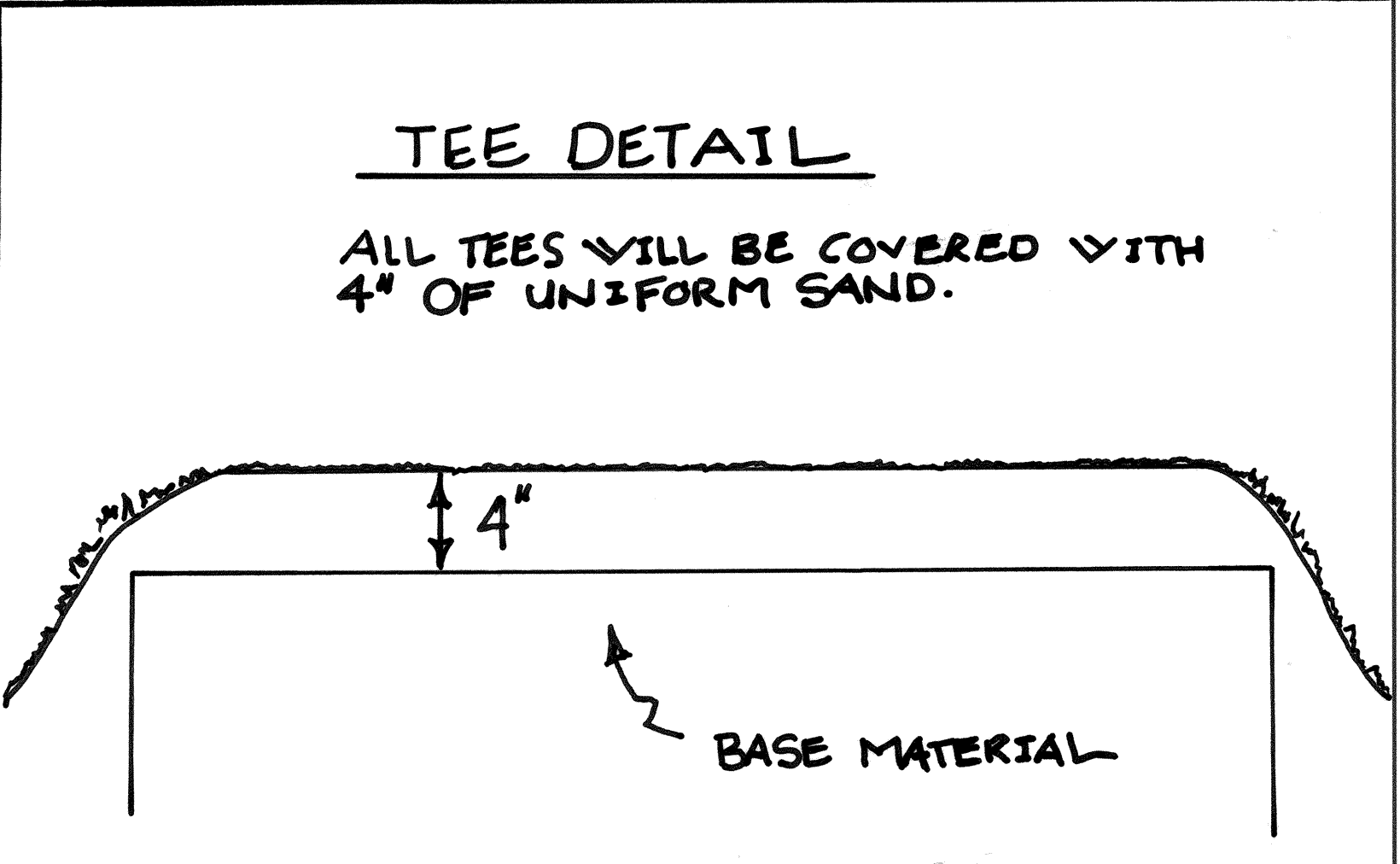
Install (on-site) native rock wall between the tee and cart path

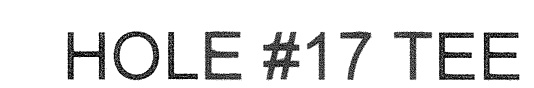
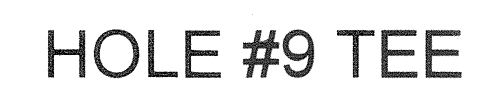
HOLE #16

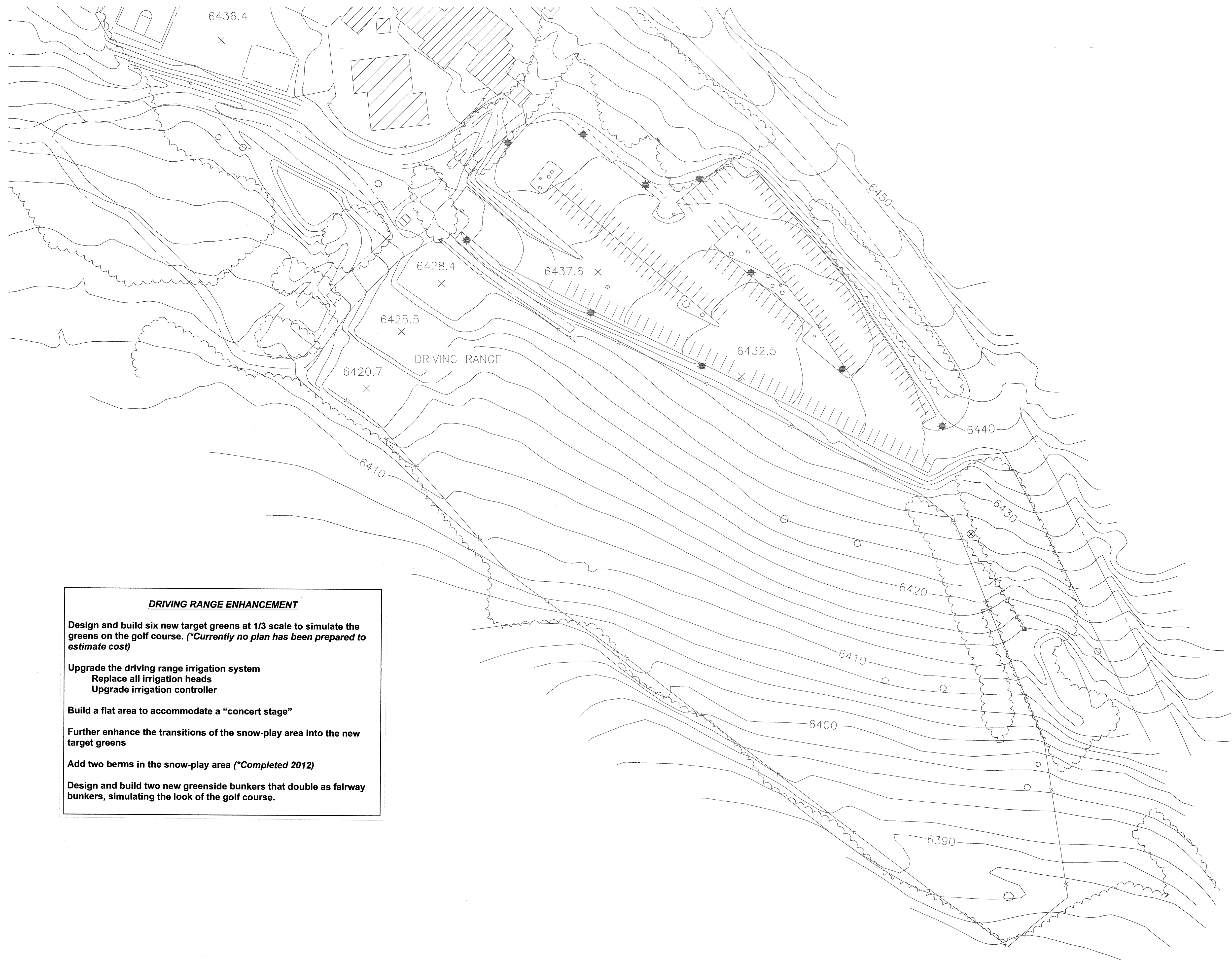
Extend the existing green tee back 15 yards. (*Included in Additional Projects Under Consideration)

HOLE #16

Expand green and blue tee boxes







DRIVING RANGE ENHANCEMENT

Design and build six new target greens at 1/3 scale to simulate the greens on the golf course. (*Currently no plan has been prepared to estimate cost)

Upgrade the driving range irrigation system
Replace all irrigation heads
Upgrade irrigation controller

Build a flat area to accommodate a "concert stage"

Further enhance the transitions of the snow-play area into the new target greens

Add two berms in the snow-play area (*Completed 2012)

Design and build two new greenside bunkers that double as fairway bunkers, simulating the look of the golf course.