



# **Donner Lake/Donner Pass Road Parking Improvement Feasibility Analysis**

**Becky Bucar, Town of Truckee  
March 28, 2020**



# Project Summary

## Donner Lake/Donner Pass Road Parking Improvement Feasibility Analysis

- ↓ Parking demand and improvement feasibility.
- ↓ Potential to improve parking, circulation, and pedestrian/bicycle safety.
- ↓ \$100,000 in FY 19/20 budget to complete study.
- ↓ \$1,000,000 in FY 20/21 for construction if pursued (must be in ROW).





# DRAFT Donner Lake East End Parking Study

*(LSC Transportation Consultants)*

- ▶ Existing Conditions
- ▶ Potential Alternatives
  - ▶ Parking Lots
  - ▶ On Street Configurations
  - ▶ Shuttles
  - ▶ Enforcement
- ▶ *Findings, Conclusions, Recommendations*





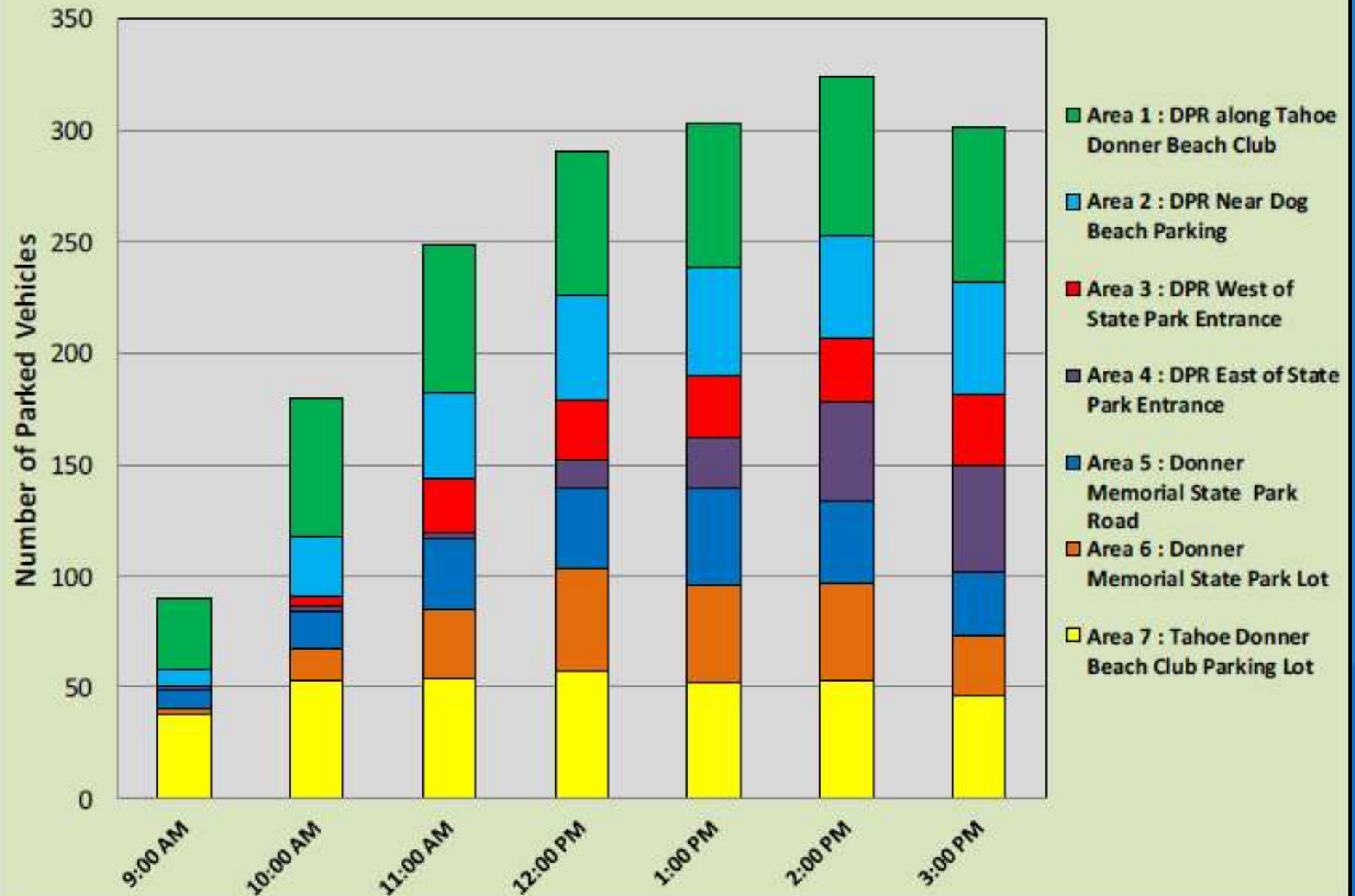
0 250 500 1,000 Feet

Figure 1

## Project Area - Parking Areas



Figure 5: Parking Counts by Hour (July 14, 2018)





### Table 3: Parking Utilization

On July 14th, 2018 (Busier Day)

Shoulder Capacity Assumes Optimal Angled Parking Pattern

| Parking Area | Description                                  | Type         | 9:00 AM | 10:00 AM | 11:00 AM | 12:00 PM | 1:00 PM | 2:00 PM | 3:00 PM |
|--------------|--|--------------|---------|----------|----------|----------|---------|---------|---------|
| 1            | On DPR along Tahoe Donner Beach Club         | Shoulder     | 40%     | 77%      | 83%      | 80%      | 79%     | 88%     | 86%     |
| 2            | On DPR East of Beach Club                    | Shoulder     | 13%     | 44%      | 62%      | 77%      | 80%     | 75%     | 84%     |
| 3            | On DPR West of State Park entrance           | Shoulder     | 0%      | 9%       | 52%      | 59%      | 61%     | 63%     | 70%     |
| 4            | On DPR East of Park Entrance to Cold Stream  | Shoulder     | 1%      | 2%       | 2%       | 10%      | 16%     | 33%     | 35%     |
| 5            | Donner Memorial State Park Road and Dirt Lot | Shoulder/Lot | 6%      | 13%      | 24%      | 27%      | 34%     | 28%     | 22%     |
| 7            | Tahoe Donner Beach Club Parking Lot          | Lot          | 6%      | 29%      | 63%      | 96%      | 90%     | 90%     | 55%     |
| 6            | Donner Memorial State Park Museum Lot        | Lot          | 54%     | 76%      | 77%      | 81%      | 74%     | 76%     | 66%     |

# Survey Results

- ▶ Overall, parkers indicated the following trip purposes:
  - ▶ 60 percent were definitely visiting Donner Memorial State Park
  - ▶ 28 percent were definitely traveling to the Beach Club
  - ▶ 7 percent were bicycling (which may or may not have included traveling through the State Park)
  - ▶ 4 percent were “swimming” (with a specific location unspecified)
  - ▶ 1 percent were unspecified
- ▶ The proportion of parkers destined to the Beach Club were higher (30 percent) on weekends than during the week (25 percent)



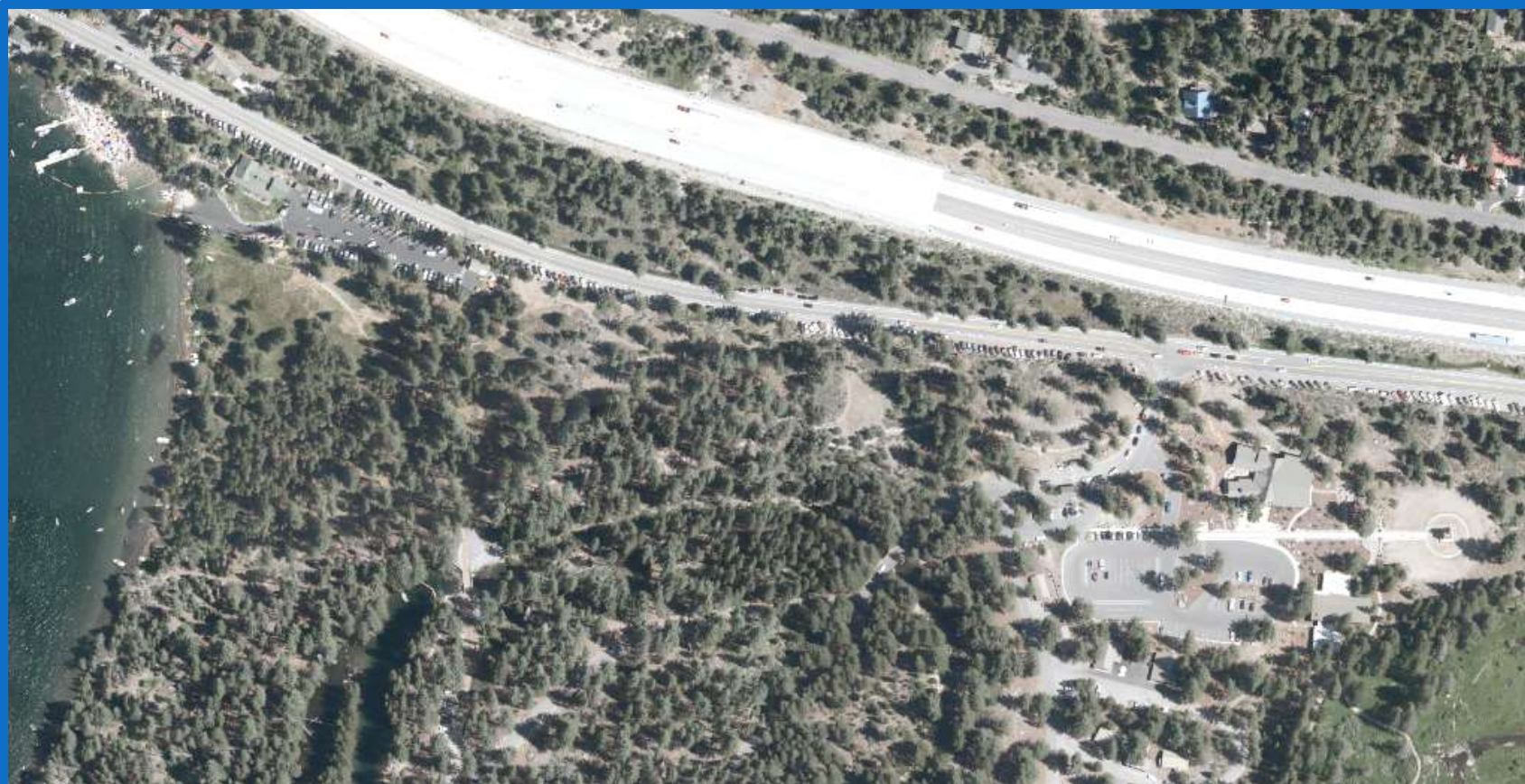
# Survey Results

- ▶ Of those surveyed, about half (49%) were either a guest or a resident of Tahoe Donner while the other half (51%) were either visitors or residents of Truckee.
- ▶ Local residents made up 62% of those surveyed while the remaining 38% were visitors.
- ▶ 51% of people stated they parked along Donner Pass Road because it was the closest, 21% to bring their dog to the beach, and 16% avoid fees.
- ▶ The average estimated visit time was 2.5 hours. 12 percent were staying 5 or more hours.
- ▶ The average size of a travel group was 2.3 people on weekdays and 3.1 people on the weekend.
- ▶ 50% of midweek visitors had a dog while only 33% of weekend visitors had a dog.



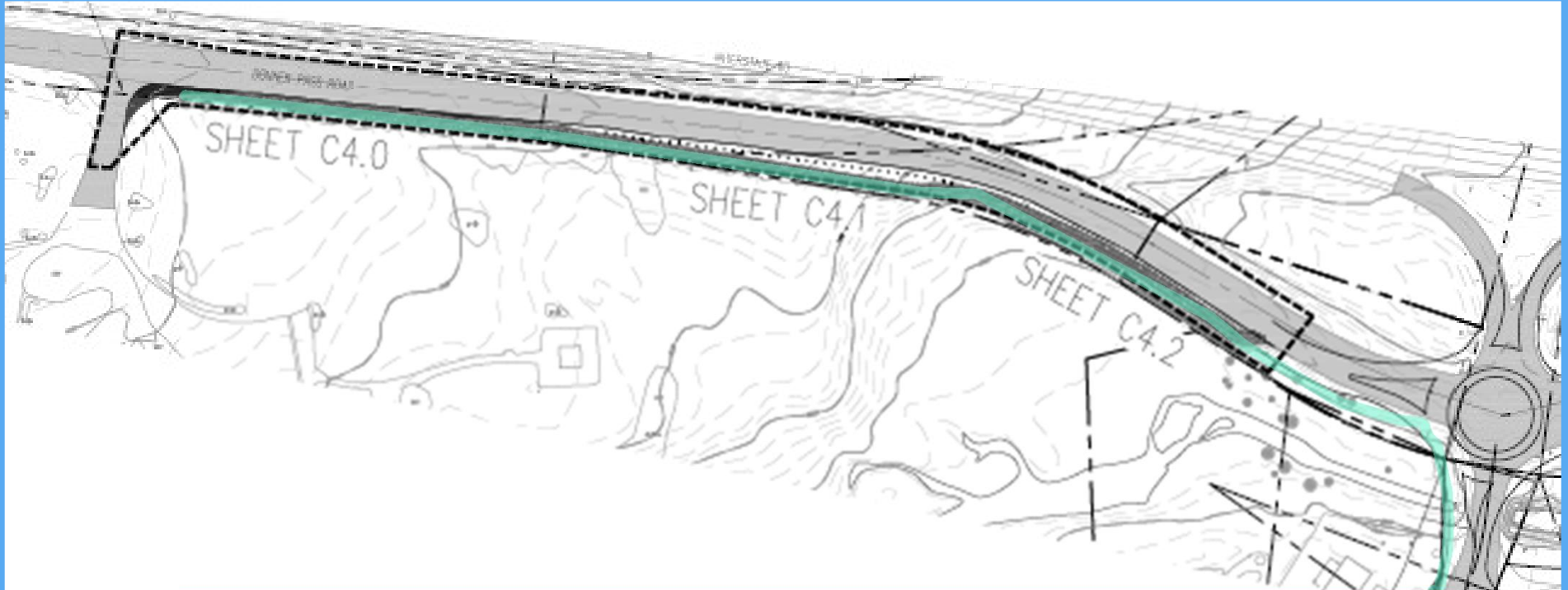
# Coordination with State Parks

- ▶ On site parking generates revenues.
- ▶ Parking limitations helps to control over use.
- ▶ Not interested in expanding parking (on site or off site).





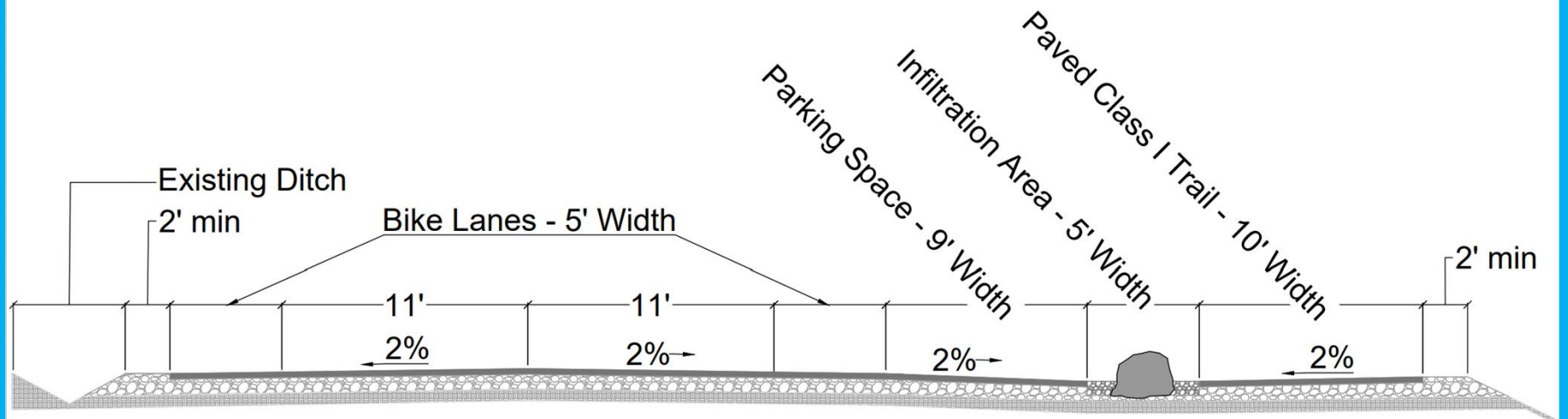
# Bike Path Constructed this Summer





# Options Considered

- ▶ Existing conditions: Do nothing
- ▶ Angled parking with no bike lane on south side
- ▶ *Parallel parking with path*





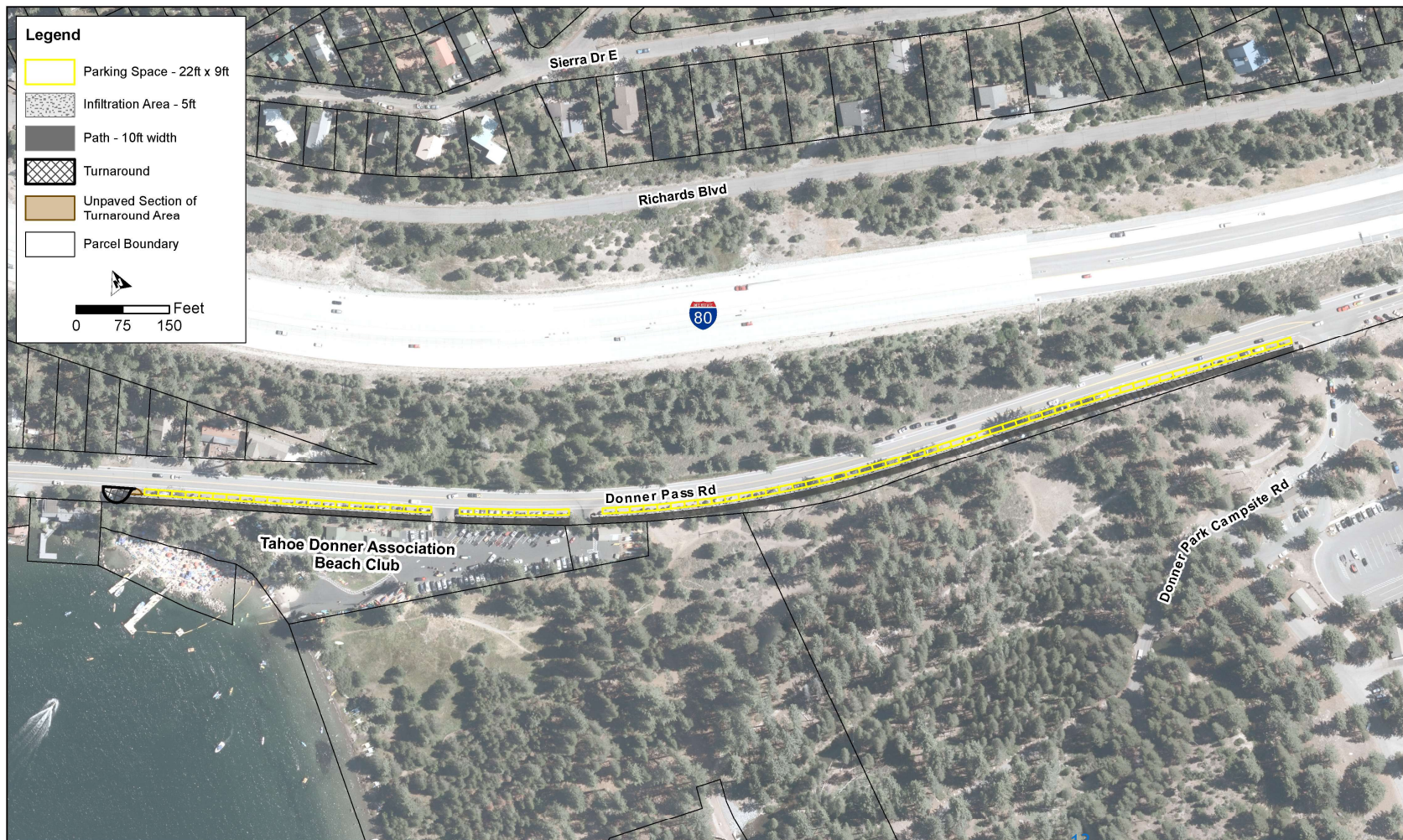
# Design Approach

- ▶ Parking Spaces: 9' X 22'
- ▶ 5' separation/infiltration area
- ▶ 10' paved path
- ▶ Boulders to prevent parking in path
- ▶ Turnaround on west end





# Overview of Potential Improvements



Potential Donner Pass Road Parking Overview



# Potential Improvements





# Potential Improvements





# Parking Supply

| Alternative                   | Number of Parking Spaces |
|-------------------------------|--------------------------|
| Current Head In Configuration | 144                      |
| Parallel Parking              | 82                       |
| Difference                    | -62                      |





# Questions?

► Comments by April?