



Donner Lake/Donner Pass Road Parking Improvement Feasibility Analysis

**Becky Bucar, Town of Truckee
April 25, 2020**

Project Summary

Donner Lake/Donner Pass Road Parking Improvement Feasibility Analysis

- ↓ Parking demand and improvement feasibility.
- ↓ Potential to improve parking, circulation, and pedestrian/bicycle safety.
- ↓ \$100,000 in FY 19/20 budget to complete study.
- ↓ \$1,000,000 in FY 20/21 for construction if pursued (must be in ROW).



DRAFT Donner Lake East End Parking Study (LSC Transportation Consultants)

- ▶ Existing Conditions
- ▶ Potential Alternatives
 - ▶ Parking Lots
 - ▶ On Street Configurations
 - ▶ Shuttles
 - ▶ Enforcement
- ▶ *Findings, Conclusions, Recommendations*



0 250 500 1,000 Feet

Figure 1

Project Area - Parking Areas



Source: Esri, DeLorme, GeoEye, Earthstar Geographics, CNR/Siarbus DS, USDA, USGS, AeroGRID, IGN, and the GIS User Community

Figure 5: Parking Counts by Hour (July 14, 2018)

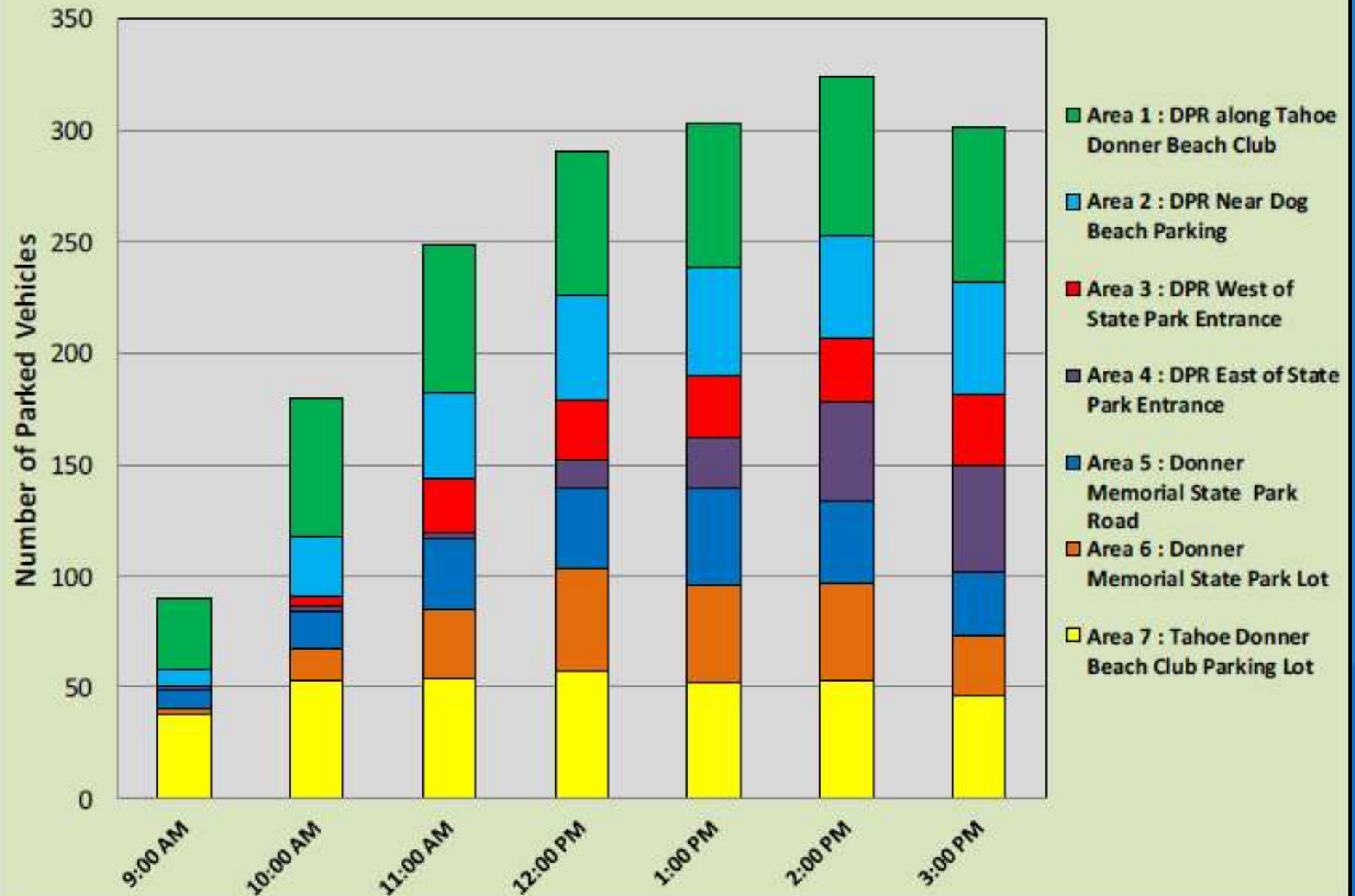


Table 3: Parking Utilization

On July 14th, 2018 (Busier Day)

Shoulder Capacity Assumes Optimal Angled Parking Pattern

Parking Area	Description	Type	9:00 AM	10:00 AM	11:00 AM	12:00 PM	1:00 PM	2:00 PM	3:00 PM
1	On DPR along Tahoe Donner Beach Club	Shoulder	40%	77%	83%	80%	79%	88%	86%
2	On DPR East of Beach Club	Shoulder	13%	44%	62%	77%	80%	75%	84%
3	On DPR West of State Park entrance	Shoulder	0%	9%	52%	59%	61%	63%	70%
4	On DPR East of Park Entrance to Cold Stream	Shoulder	1%	2%	2%	10%	16%	33%	35%
5	Donner Memorial State Park Road and Dirt Lot	Shoulder/Lot	6%	13%	24%	27%	34%	28%	22%
7	Tahoe Donner Beach Club Parking Lot	Lot	6%	29%	63%	96%	90%	90%	55%
6	Donner Memorial State Park Museum Lot	Lot	54%	76%	77%	81%	74%	76%	66%

Survey Results

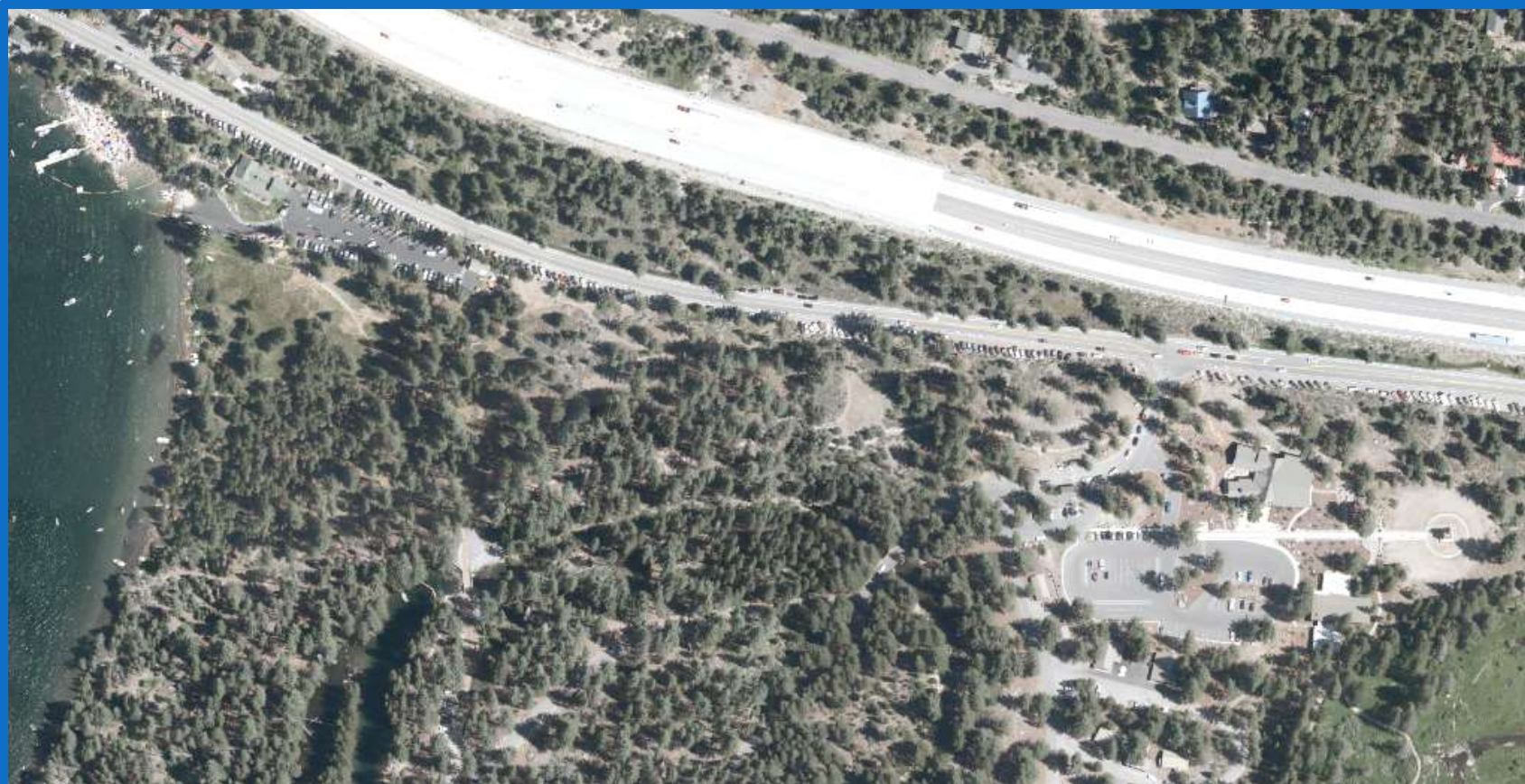
- ▶ Overall, parkers indicated the following trip purposes:
 - ▶ 60 percent were definitely visiting Donner Memorial State Park
 - ▶ 28 percent were definitely traveling to the Beach Club
 - ▶ 7 percent were bicycling (which may or may not have included traveling through the State Park)
 - ▶ 4 percent were “swimming” (with a specific location unspecified)
 - ▶ 1 percent were unspecified
- ▶ The proportion of parkers destined to the Beach Club were higher (30 percent) on weekends than during the week (25 percent)

Survey Results

- ▶ Of those surveyed, about half (49%) were either a guest or a resident of Tahoe Donner while the other half (51%) were either visitors or residents of Truckee.
- ▶ Local residents made up 62% of those surveyed while the remaining 38% were visitors.
- ▶ 51% of people stated they parked along Donner Pass Road because it was the closest, 21% to bring their dog to the beach, and 16% avoid fees.
- ▶ The average estimated visit time was 2.5 hours. 12 percent were staying 5 or more hours.
- ▶ The average size of a travel group was 2.3 people on weekdays and 3.1 people on the weekend.
- ▶ 50% of midweek visitors had a dog while only 33% of weekend visitors had a dog.

Coordination with State Parks

- ▶ On site parking generates revenues.
- ▶ Parking limitations helps to control over use.
- ▶ Not interested in expanding parking (on site or off site).



Collision Data

Table 7: Summary of East End Donner Lake Crash Data - 2008 to 2017

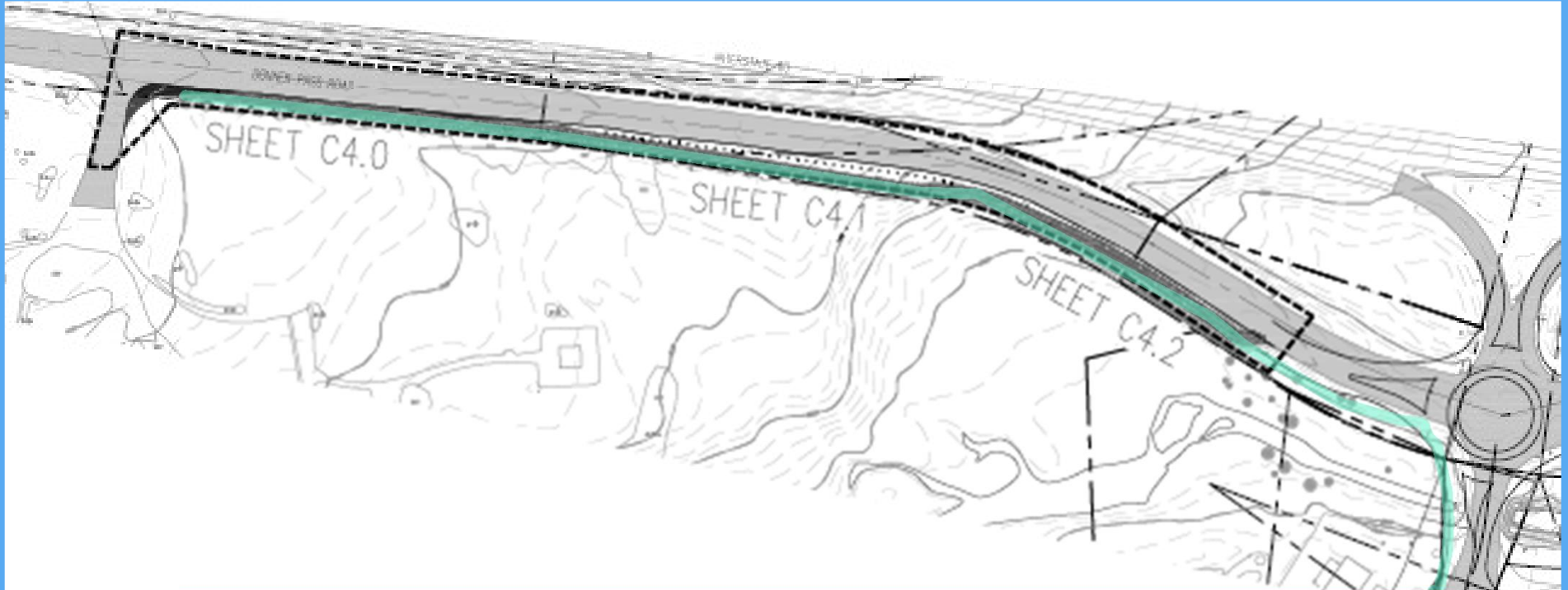
Parking Area	Donner Pass Road Segment	Total Study Intersection Crashes	% Total Crashes	Crashes by Type								Weather				Lighting			
				Broadside	Sideswipe	Rear End	Hit Object	Head-On	Auto/Ped	Overturned	Other	Clear	Cloudy	Raining	Snowing	Daylight	Dusk/Dawn	Dark- ST LTS	Dark- NO ST LTS
1	Along Tahoe Donner Beach Club	3	33%	1	0	0	1	0	0	1	0	3	0	0	0	1	1	0	1
2/3	From Tahoe Donner Beach Club to State Park Entrance	1	11%	0	0	0	1	0	0	0	0	1	0	0	0	0	0	0	1
4	From State Park Entrance to Coldstream Canyon Rd	5	56%	2	0	1	1	0	1	0	0	4	0	0	1	4	0	1	0
TOTAL		9	100%	3	0	1	3	0	1	1	0	8	0	0	1	5	1	1	2
% Study Intersection Crashes				33%	0%	11%	33%	0%	11%	11%	0%	89%	0%	0%	11%	56%	11%	11%	22%

ST LTS = Street Lights

Note: Data source is California Highway Patrols SWITRS database

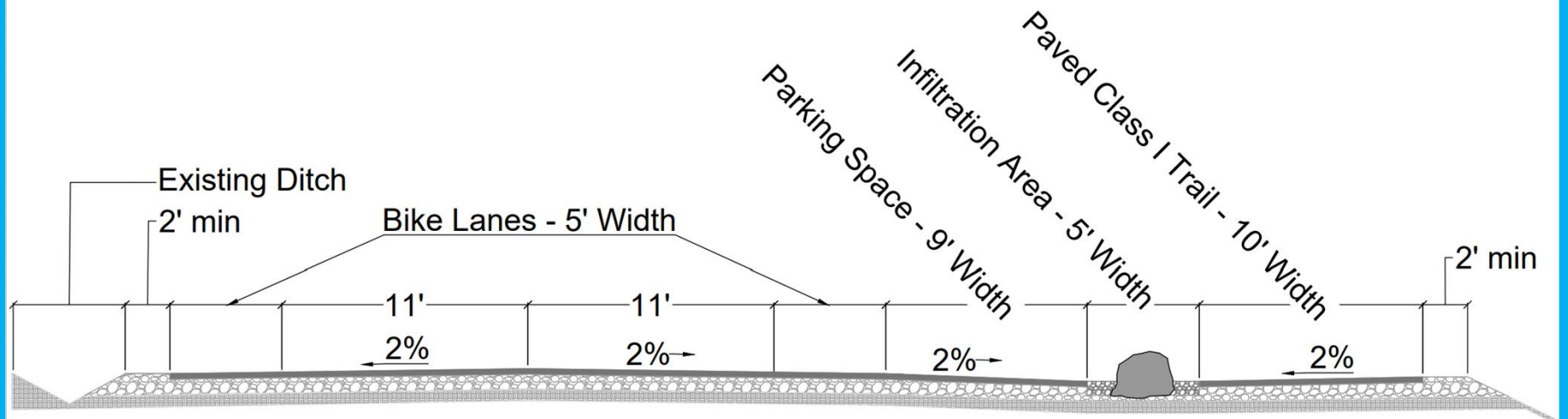
- ▶ 9 collisions in 10 years.
- ▶ Majority of crashes in the corridor are either broadsides or the vehicle hit an object.
- ▶ 4 out of 9 (44%) involved bike or ped.
- ▶ No ped collisions west of park entrance and only one bicycle that did not involve a vehicle.
- ▶ Collisions rates were less than half of the statewide average.

Bike Path Constructed this Summer



Options Considered

- ▶ Existing conditions: Do nothing
- ▶ Angled parking with no bike lane on south side
- ▶ *Parallel parking with path*

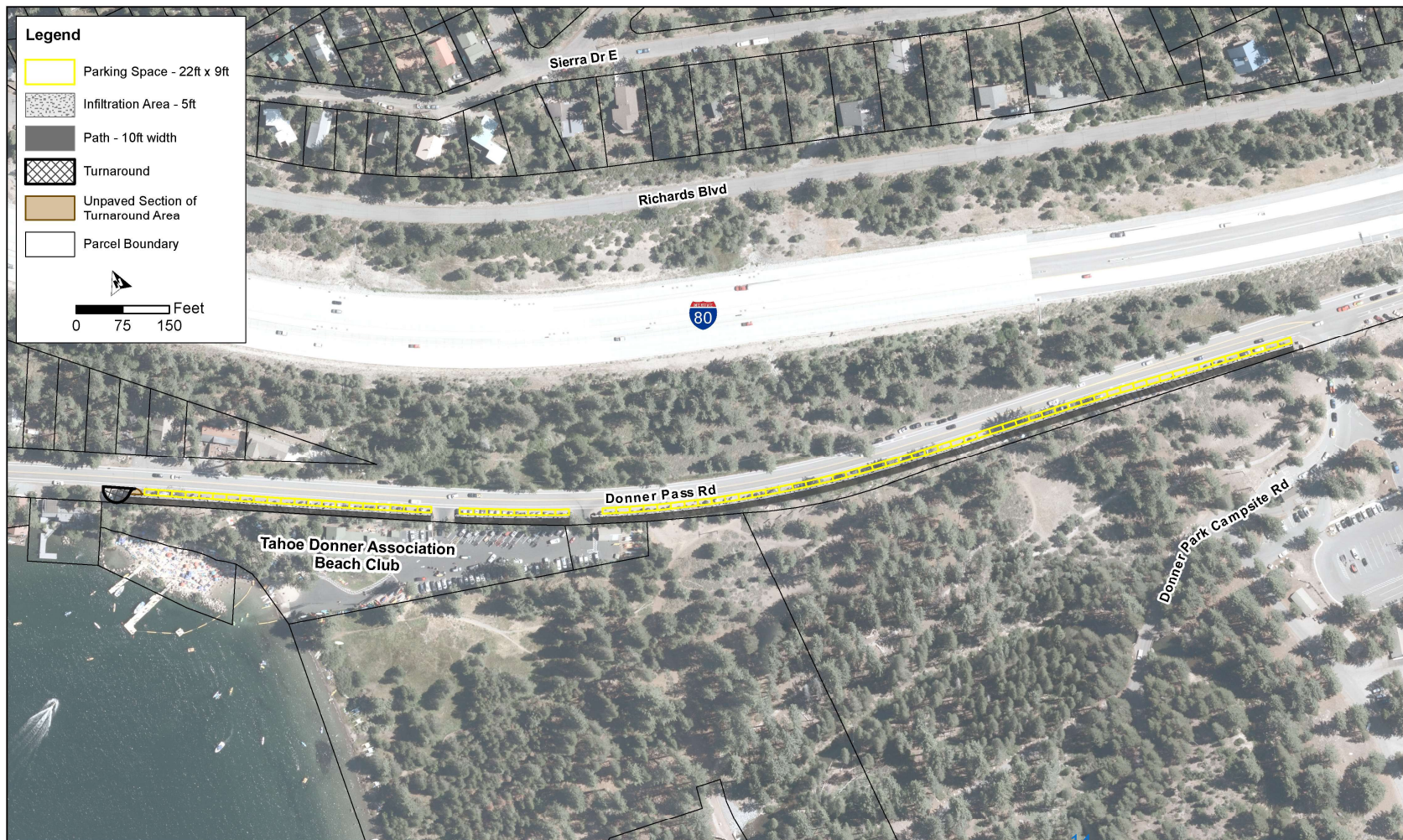


Design Approach

- ▶ Parking Spaces: 9' X 22'
- ▶ 5' separation/infiltration area
- ▶ 10' paved path
- ▶ Boulders to prevent parking in path
- ▶ Turnaround on west end



Overview of Potential Improvements



Potential Donner Pass Road Parking Overview

Potential Improvements



Potential Improvements



Parking Supply

Alternative	Number of Parking Spaces
Current Head In Configuration	144
Parallel Parking	82
Difference	-62



Questions?

► Comments by *May*?