

LODGE AT DOWNHILL SKI

TASK FORCE UPDATE

1/22/21



LODGE AT DOWNHILL SKI TASK FORCE UPDATE

OUTREACH

- Member survey results presented today
- PROs working on final report and findings analysis

BUSINESS PLAN

- PROs moving into business plan phase of contract

ARCHITECTURE AND ENGINEERING DESIGN

- Negotiating contract with BSA
- Moving into conceptual design



LODGE AT DOWNHILL SKI TASK FORCE UPDATE

UPCOMING TASK FORCE INVOLVEMENT

Jon Mitchell

Jim Beckmeyer

George Rohrback

Rob Kautz

Michael Sullivan

Rob McCray

Jim Colbert

Design Team Members

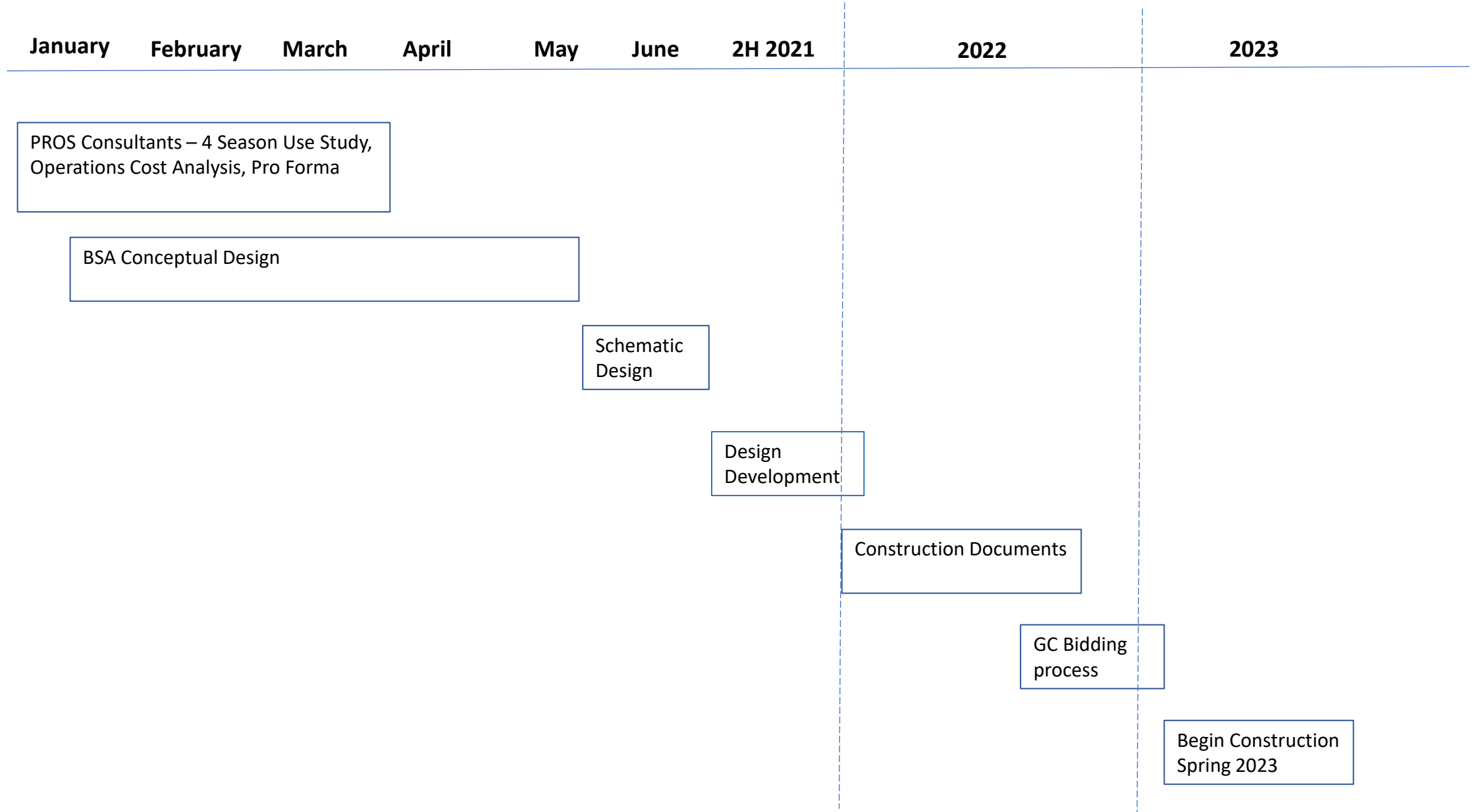
PROS Operations / Business
Planning

PROS Financial Statements
Pro Forma



LODGE AT DOWNHILL SKI TASK FORCE UPDATE

BIG PICTURE SCHEDULE



THANK YOU

