



# Ever Valley Restoration — Phase 1 30% Design Update to Tahoe Donner Board

Eben Swain

Feb. 26, 2020





# Outline

- Project Schedule/Funding
- Project Goals
- Studies Completed / Permitting
- Project Design Elements
- Recreation/Restoration Opportunities
- Next Steps





# Schedule

| Task                          | Completion Date |
|-------------------------------|-----------------|
| Funding                       | May, 2019       |
| RFP & Consultant Hiring       | June/July, 2020 |
| Project Launch                | July, 2020      |
| Field Surveys & 30% Design    | February, 2021  |
| 65% Design & Cost Estimate    | April, 2021     |
| 100% Design & CEQA Completion | July, 2021      |
| Project Permitting            | Fall, 2021      |
| Project Implementation        | Fall, 2022      |



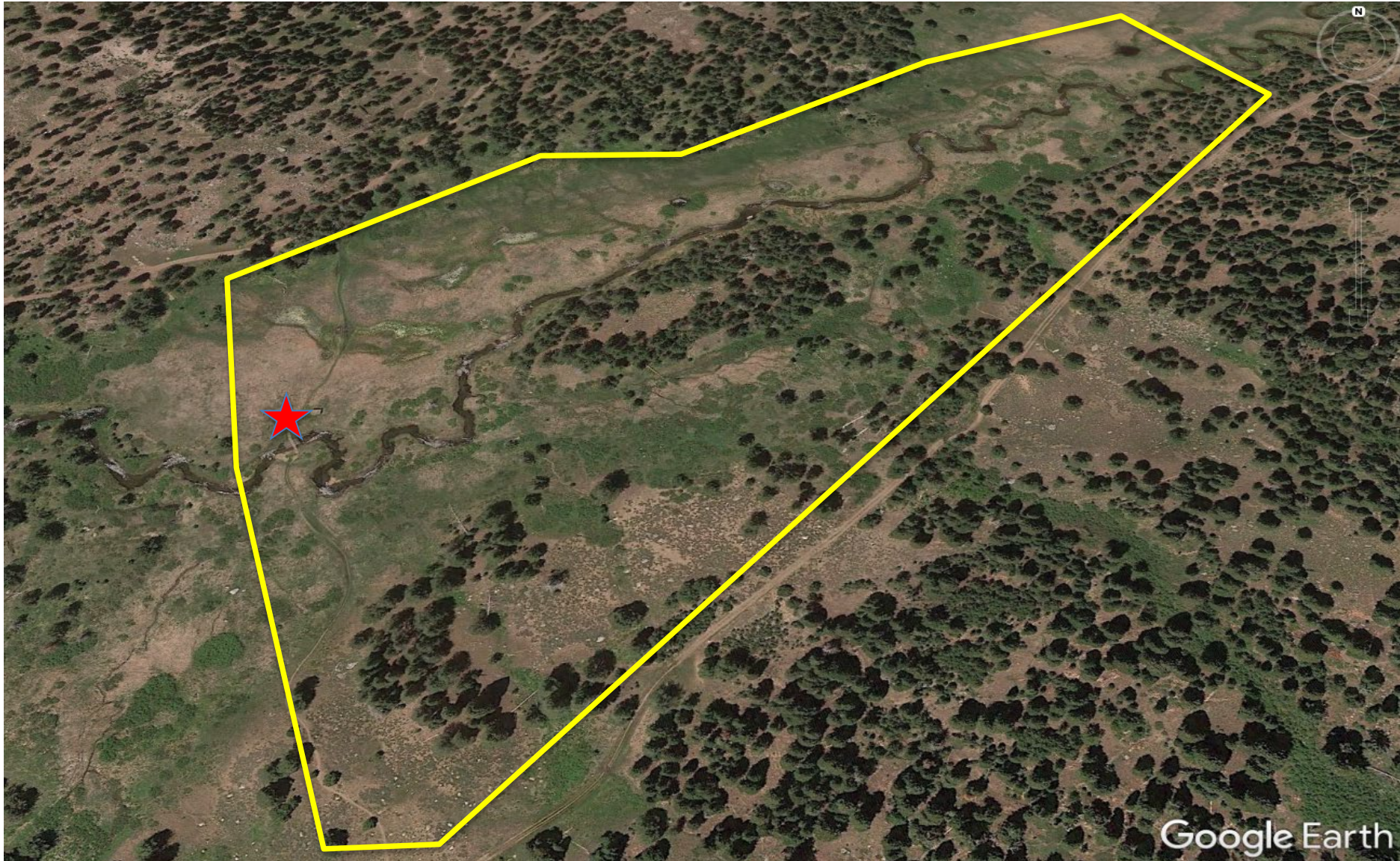
# Funding

- Available funding - \$1,139,836
  - 2020 – 2022 funding via TRWC @ \$589,836
  - TDA – Replacement Reserve Fund
    - 2020 - \$150,000 for soft costs
    - 2022 - \$400,000 crossing and trail replacement





## Site Location







# Ever Valley Restoration - Project Goals

- Remove existing failed culvert crossing on South Fork of Prosser Creek and replace with sustainable crossing
- Enhance recreational experience and reduce user impact on sensitive resource areas.
- Meadow restoration
- Stabilize eroding streambanks



# Existing Conditions/Field Surveys Completed

- Archeology
- Botany/Vegetation Composition
- Wildlife
- Geomorphology
- Geo-Technical (Soil Analysis)



# CEQA

Lead Agency: Nevada County

- Guiding environmental permitting & project implementation
- All surveys feed into potential significance of env. Impacts
- Anticipated Mitigated Negative Declaration

**CEQA Completion Date: August, 2021**





# Project Design Elements

## Recreational

- trail alternatives
- access management
- protecting sensitive habitat

## Meadow

- boardwalk
- preserve existing veg & habitat

## Stream

- coyote crossing
- bridge installation
- streambank stabilization
- boulder step-pools
- willow establishment

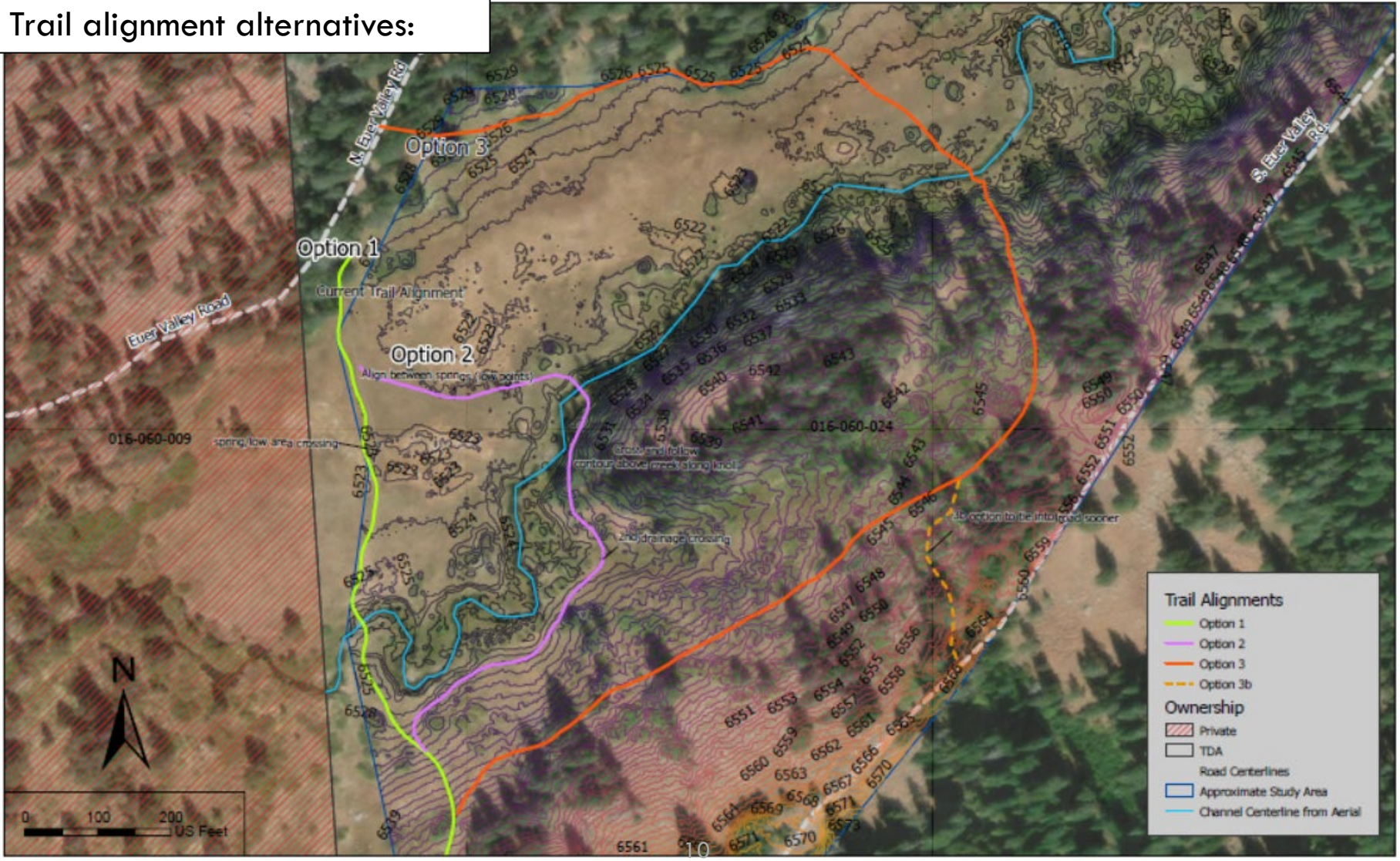






# Recreational Enhancement Opportunities

Trail alignment alternatives:







# Recreational Enhancement Opportunities

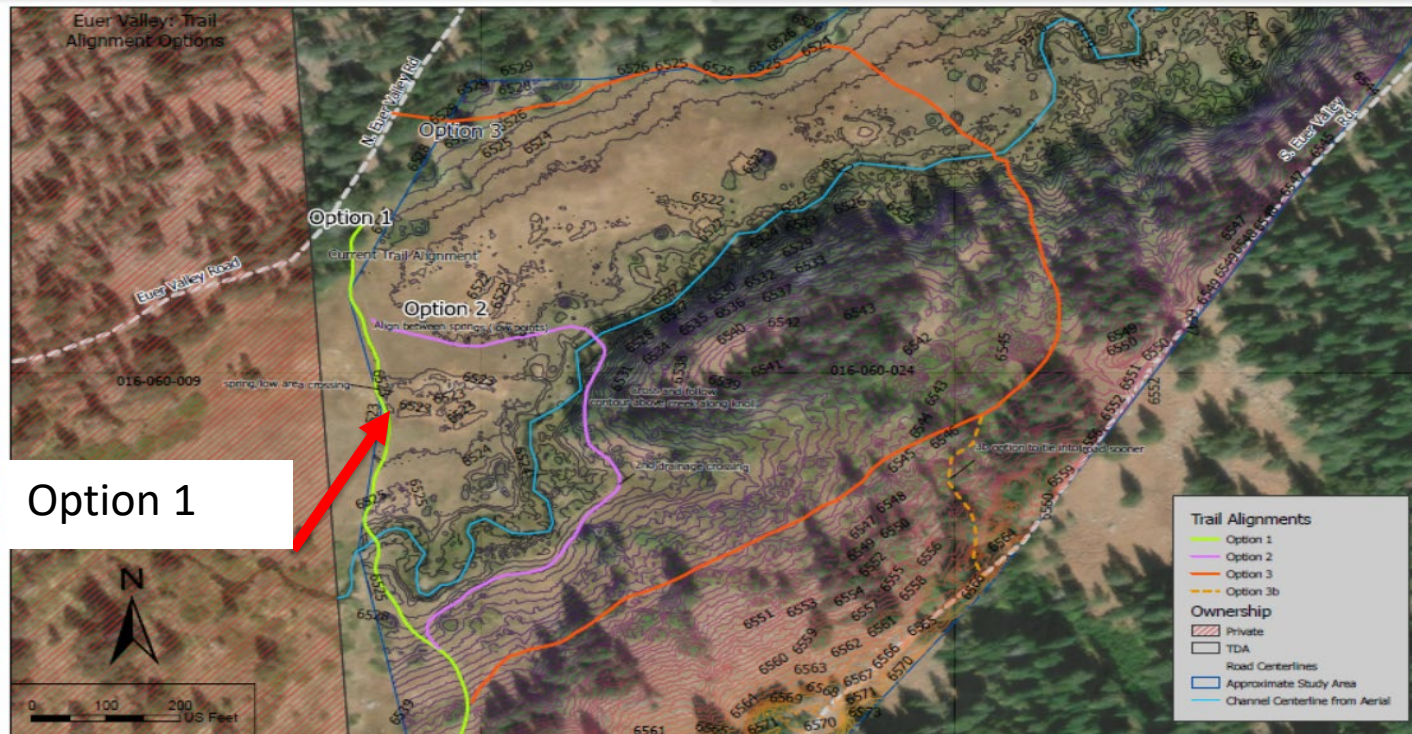
## 1. West Trail Alignment (Existing)

### Pros:

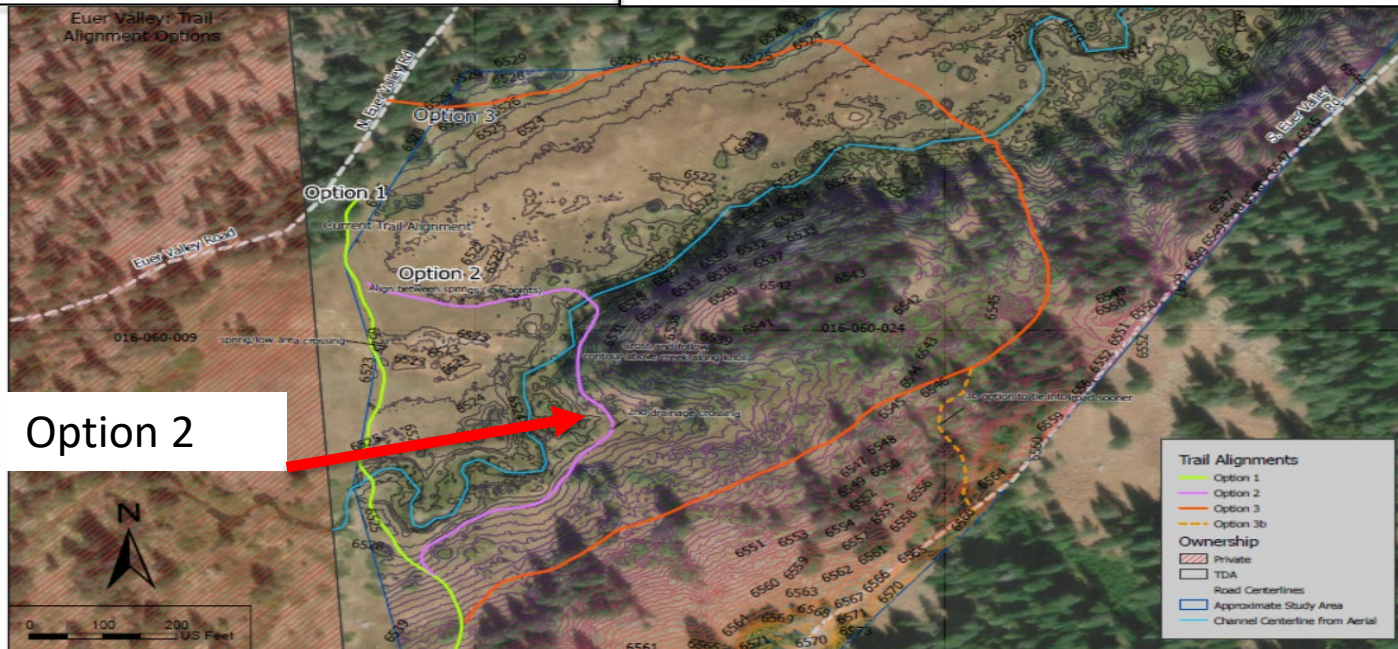
- Encompasses area of existing use.
- Has the least amount of new disturbance.
- Minimal to zero tree removal.
- Does not disrupt current winter operations

### Cons:

- Traverses a major spring/wetland
- Requires a significant length of boardwalk.
- Bridge crossing located at stream meander













# Ever Valley Restoration – Next Steps

- Finalize 30% design comments with team
- Develop 30% engineers estimate for Alternatives 1 & 2
- Develop staff recommendation on alternative for board consideration early spring.





Questions?