



Truckee Fire Protection District

Wildfire Preparedness

Bill Seline
Fire Chief





100 years of Fire Fuel

Things have changed

- Last 20 years increasingly devastating fire seasons
- Lack of natural fires = build up of fuel, over growth in Truckee. Not Natural forests.
- More people have moved to the WUI
- Climate change coupled with overgrowth is stressing trees leading to dryness, bark beetle, death and increased fire intensity.
- More visitors (ie. VRBO)
- Wildfire intensity has increased
- Multiple recent, nearby large fires, destruction and death.
- Locally, surveys have shown in the last few years that 95% of people feel that wildfire is their #1 concern.

Are we heading towards a disaster here?

(Yellow are big fires in last 100 years)





Angora Fire 2007



Washoe Fire 2007



I 80 Fire 2007



Camp Fire 2018



Creek Fire 2020



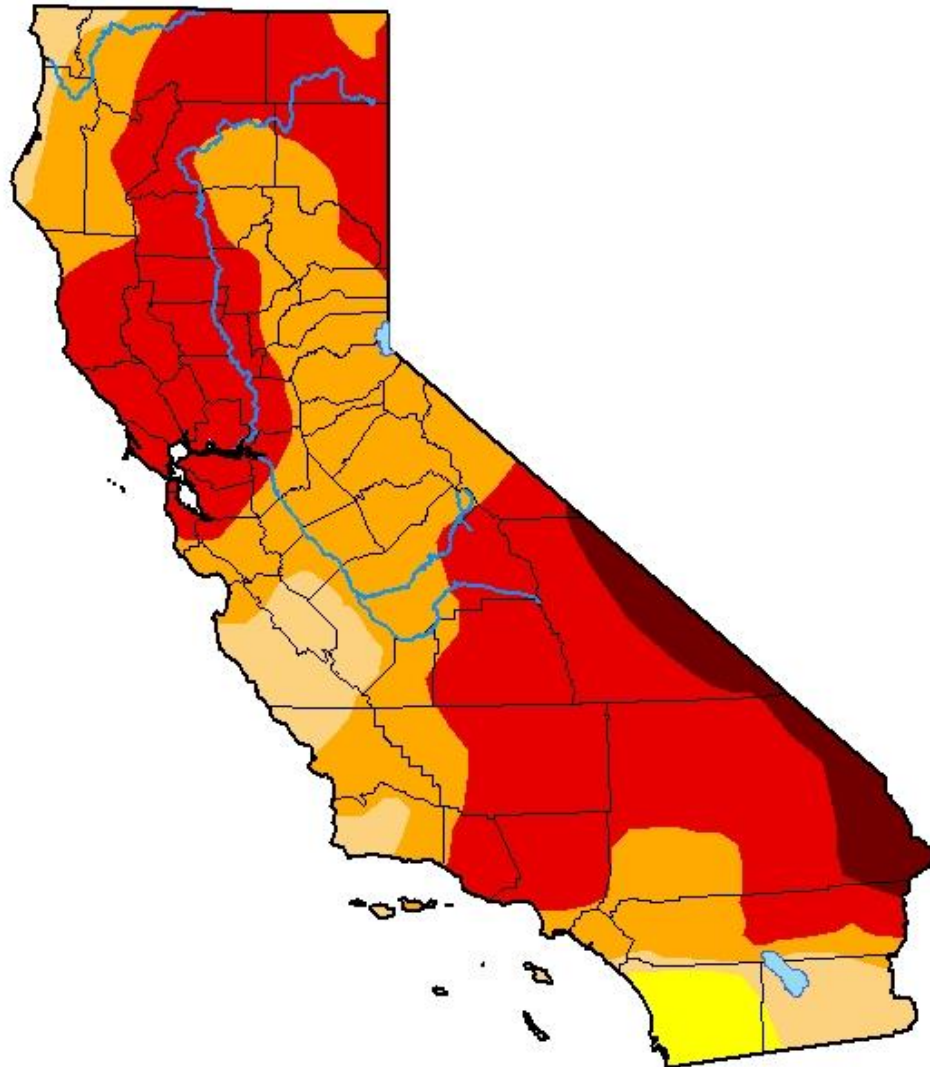
North Complex 2020

Loyalton Fire 2020

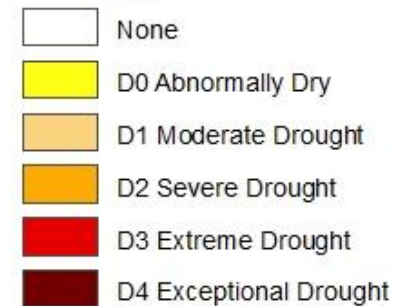


U.S. Drought Monitor California

April 27, 2021
(Released Thursday, Apr. 29, 2021)
Valid 8 a.m. EDT



Intensity:



The Drought Monitor focuses on broad-scale conditions. Local conditions may vary. For more information on the Drought Monitor, go to <https://droughtmonitor.unl.edu/About.aspx>

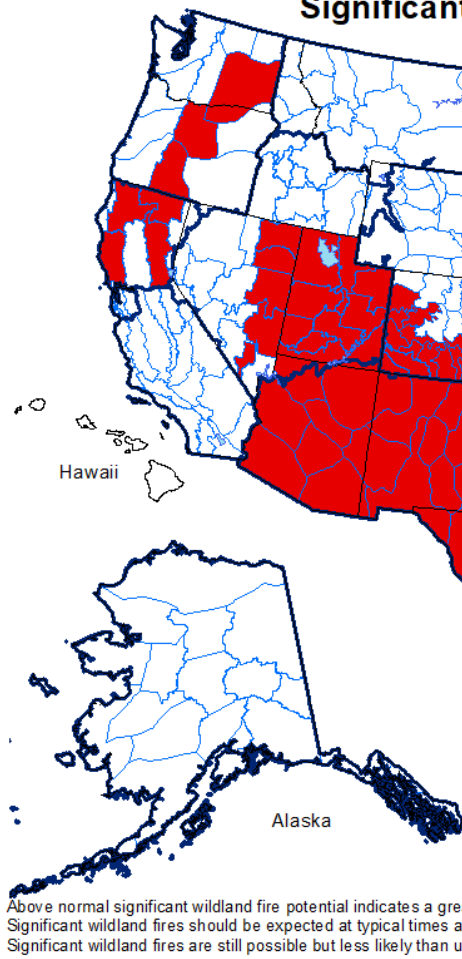
Author:

Richard Heim
NCEI/NOAA

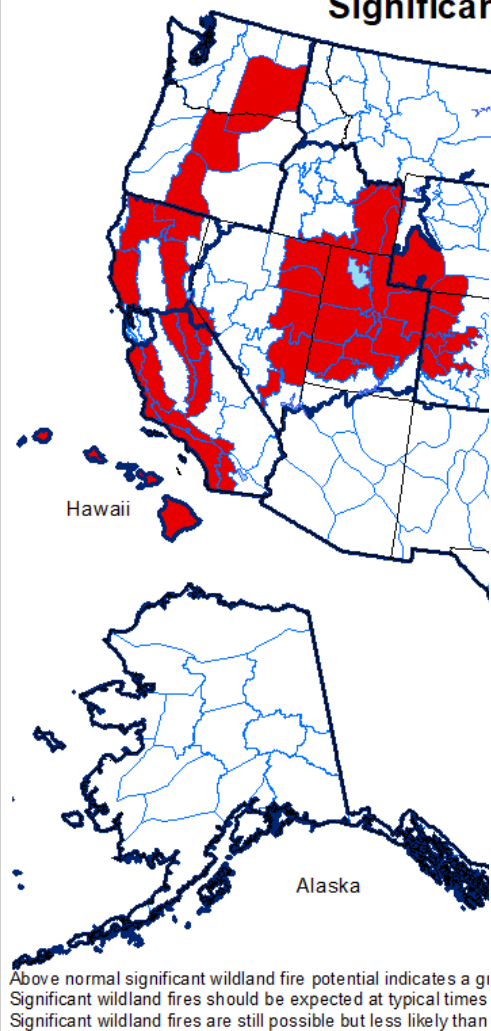


droughtmonitor.unl.edu

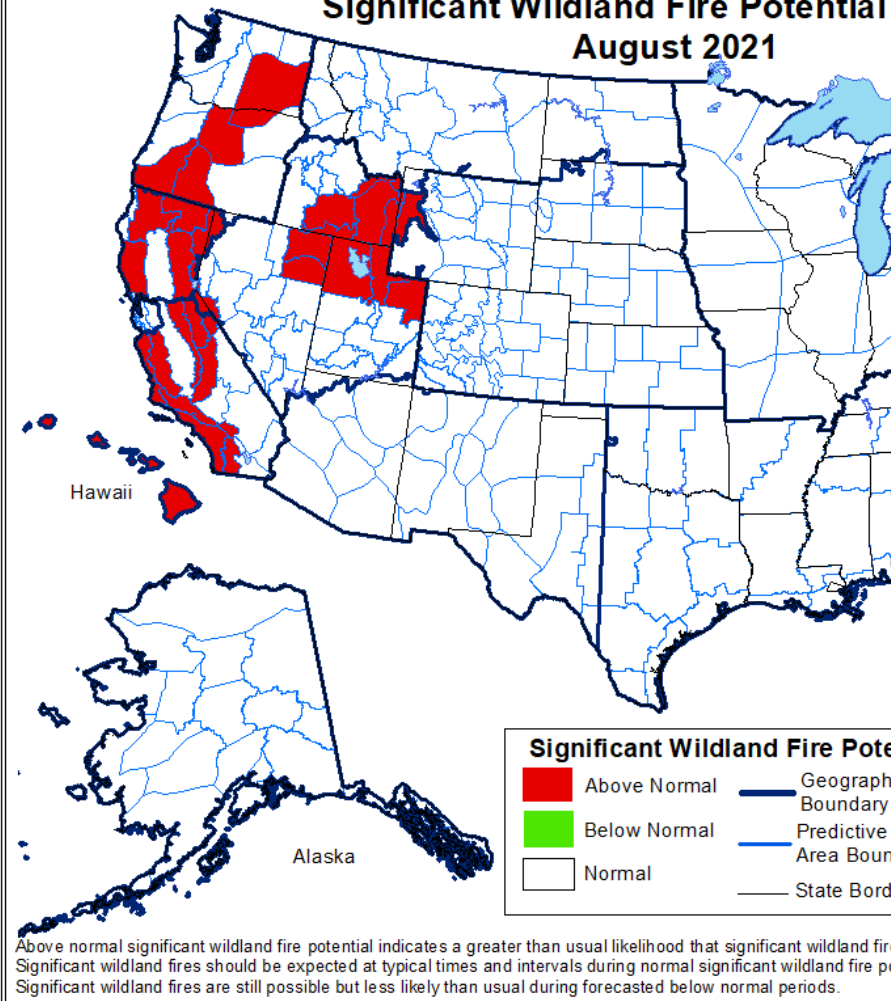
Significant Wildland Fire Potential Outlook June 2021



Significant Wildland Fire Potential Outlook July 2021



Significant Wildland Fire Potential Outlook August 2021





Preventing a Disaster

- **Fire Prevention in the WUI**

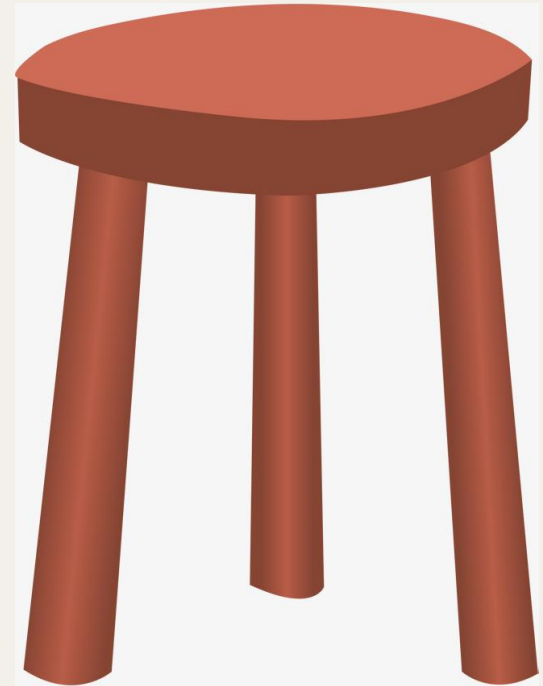
- Reduce Fuel on Larger Land
- Reduce Fuel Around homes
- Reduce Fire Starts

- **Personal Responsibility**

- Take care of your property
- Evacuate early

- **Emergency Response**

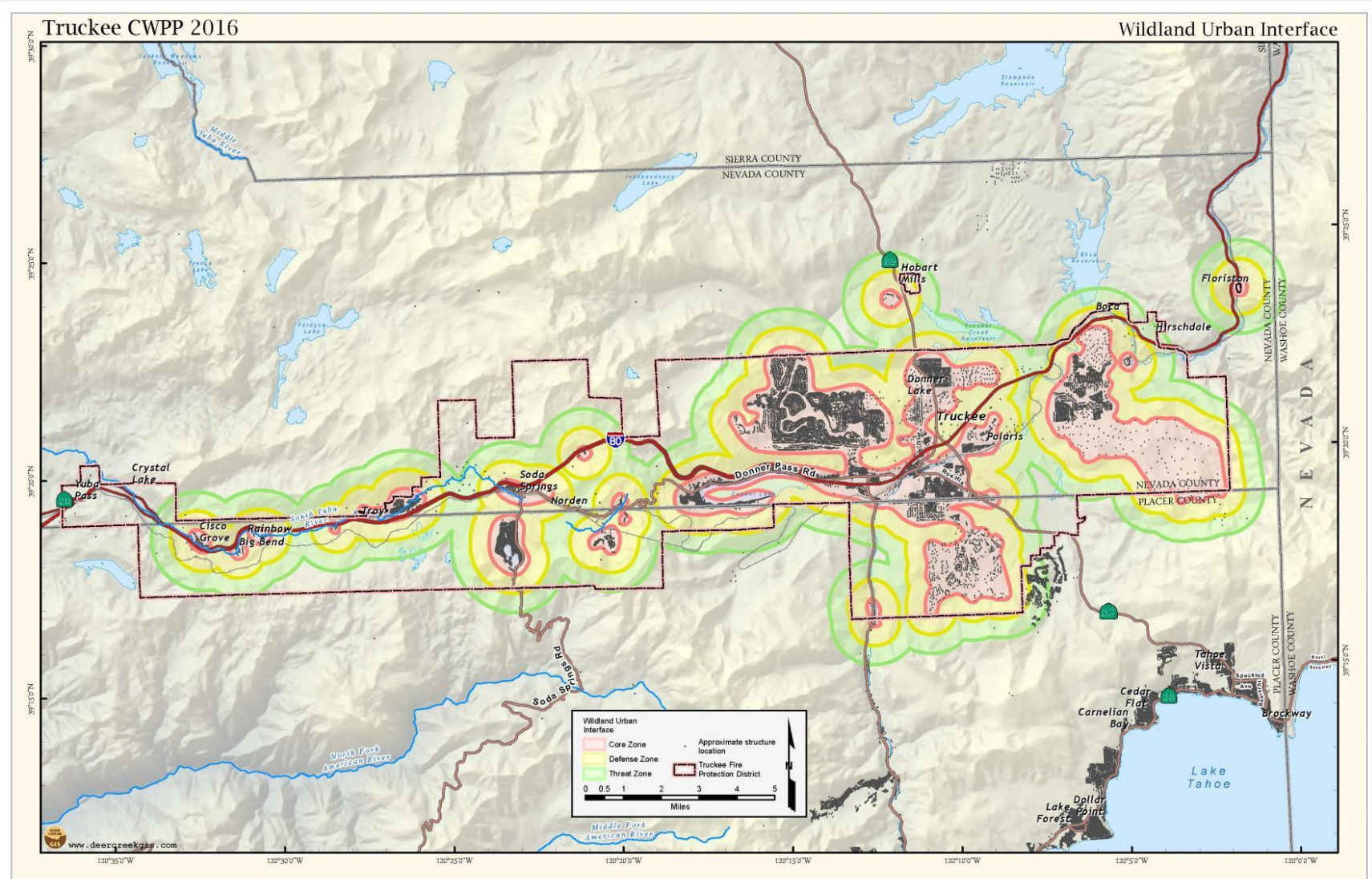
- Coordinated multi-agency response
- Cal Fire, USFS and Local Fire Agencies



No Silver Bullet!

WUI – Wildland Urban Interface

Threat and Defense Zones



Large Land Fuel Reduction



Before, during and after...



Glenshire Fire Break

I 80 Fire (2007)



Defensible Space Around Homes

don't be fuel to the fire!

What should I do?

- Limb trees up at least 6 feet (*prevent laddering*)
- Space trees, bushes and plants
- Remove pine needles
- Move firewood 30' away from house
- Cut tall grass
- Remove dead vegetation
- Clean under decks
- 5' Ember Resistant Zone



TruckeeFire.org
ReadyForWildfire.org

Reducing Fire Starts

- 95% of Fires Human Caused
- **Campfire and Charcoal Ban** during Fire Season
- **“Gas Only” During Fire Season**
- Fire Season, May 24th to November

Briquets in Glenshire

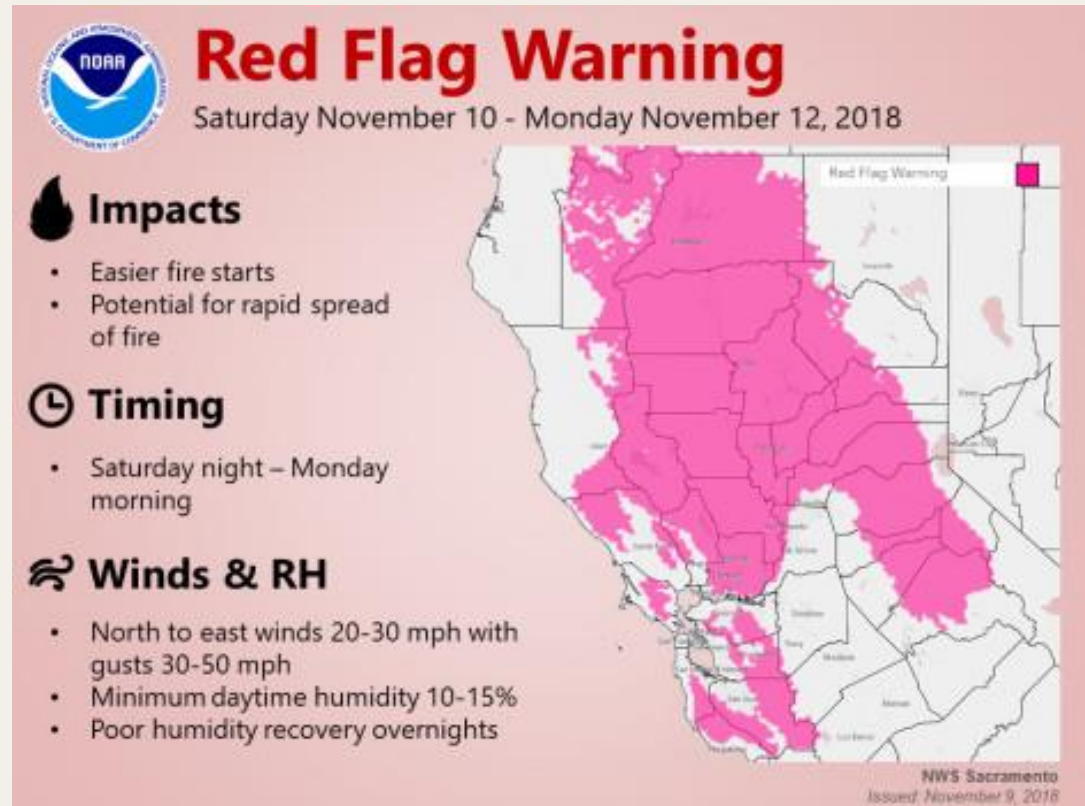


Unattended Campfire in TD



Critical Fire Weather – RED FLAG

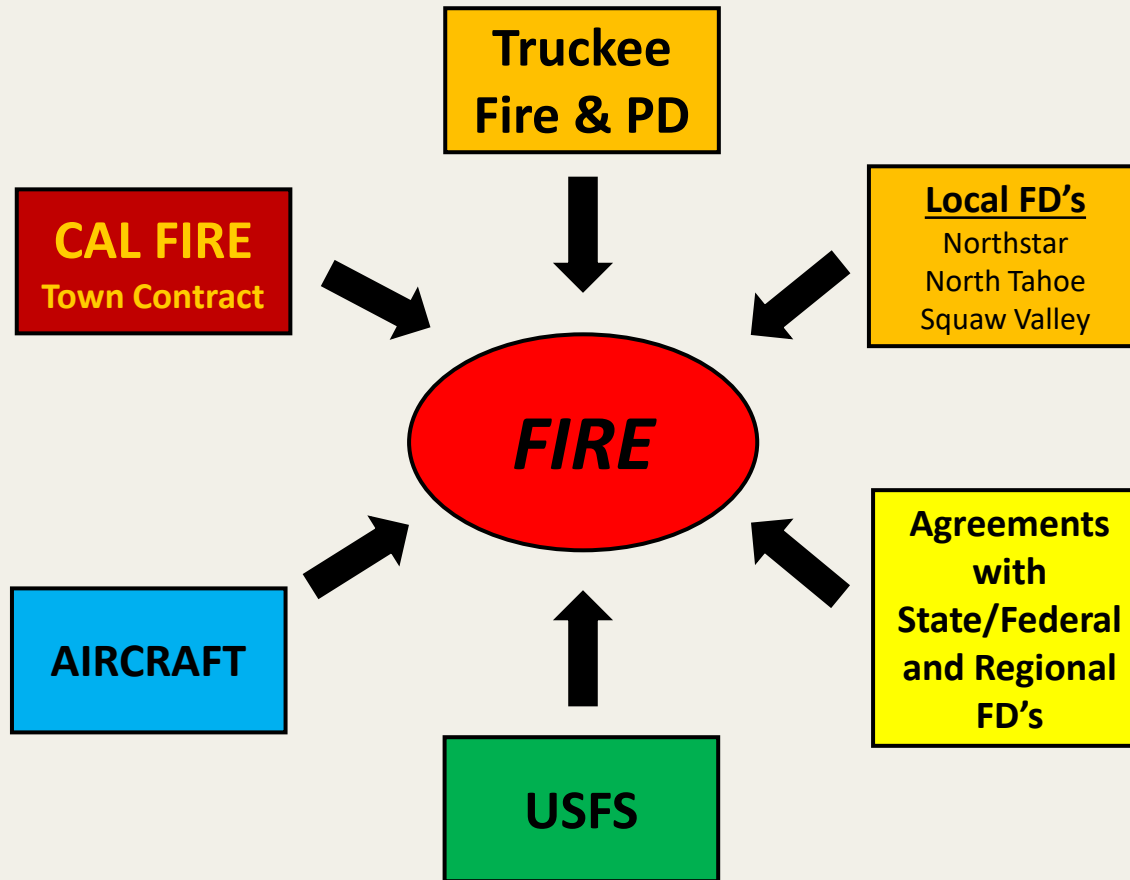
- **Wind!**
- **Be Alert!**
- **Be Ready to GO!**



Nixle.com to get alerts!

Local Wildfire Response

Alert Tahoe





Wildfire Prevention Tax Measure

- 95% of voters “wildfire is most important issue”
- 79% Support \$179 property tax
- Money will be spent on Fire Fuel Reduction
- Grants are Unpredictable
- Fire Safe Marin (\$200 sq/foot parcel tax)
- Other benefits: dead tree fund, green waste disposal, evacuation preparation
- Fiscal Accountability
- Special mail-in election in August



TruckeeFire.org

How Will Tahoe Donner Benefit?

- **Support Community-Wide Wildfire Protection**
 - Protects local economy, property values, aesthetics, recreation etc...
- **Support Specific TD projects**
 - Existing production rate will cost more in the future
 - Increase scale of fuel reduction projects and the pace at which they get done. *We can do more, faster!*
 - More large land projects, faster (don't need to wait for grants)
 - Additional revenue to support new costs of existing program
 - New programs like Senior & low income defensible space support, dead tree fund, biomass and other green waste opportunities.
 - Capital investments (i.e. Chipper, haul truck, masticator....)
- **TDA is “at the table” during CWPP planning**