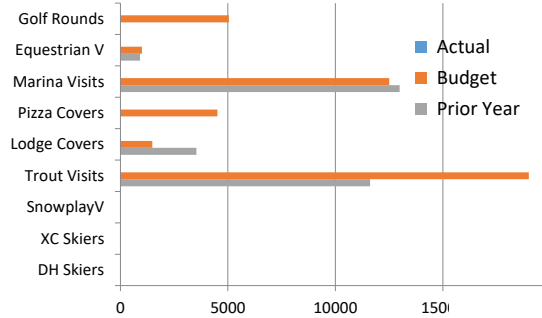




Month | Operating Volumes

August 2021

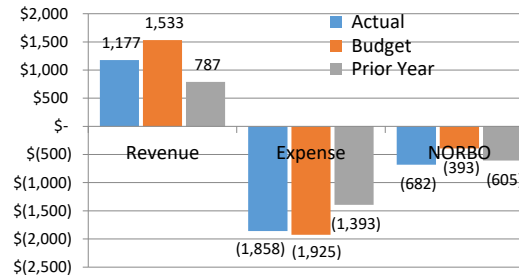


August Revenue: \$1,176,687

-355,959/-23% unfav to Bdg and 389,394/49% fav to PY

Month | Operating Fund Results

August 2021

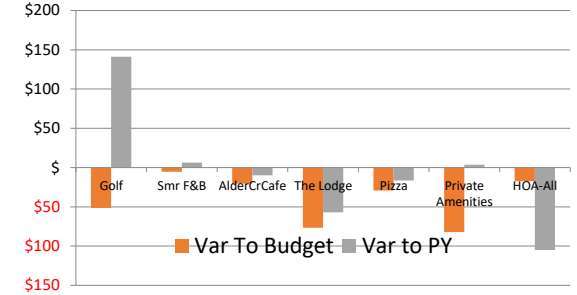


August NORBO: -\$681,618

-288,959/-74% unfav to Bdg and -76,302/-13% unfav to PY

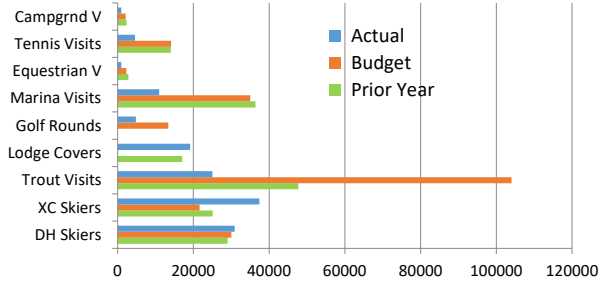
Month | Key NOR Variances

August 2021



YTD | Volumes

For the eight months ending August 2021

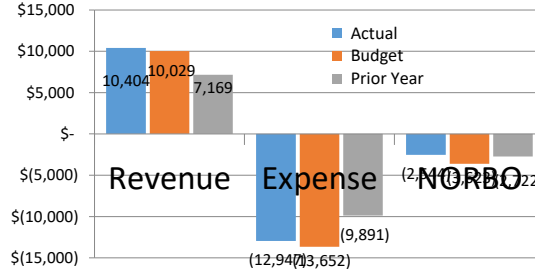


August YTD Revenue: \$10,403,769

374,463/4% fav to Bdg and 3,234,771/45% fav to PY

YTD | Operating Fund Results

For the eight months ending August 2021

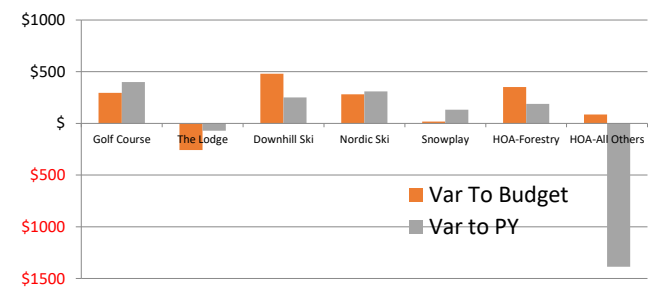


August YTD NORBO: -\$2,542,511

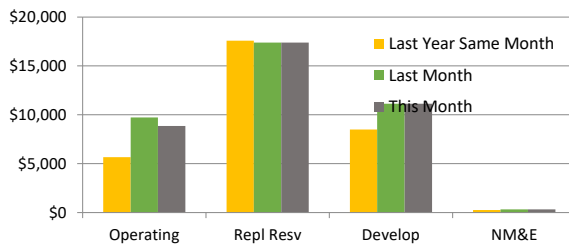
1,080,574/30% fav to Bdg and 179,227/7% fav to PY

YTD | Key NOR Variances

the eight months ending August 2021



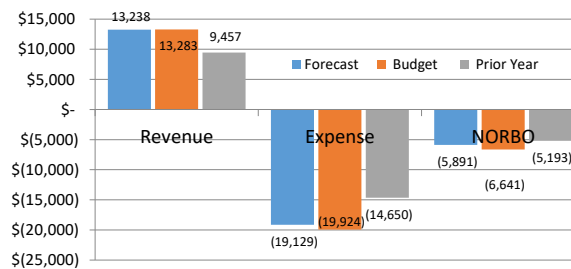
Cash & Investments Balances, as of month end:



NORBO = Net Operating Results Before Overhead Allocation

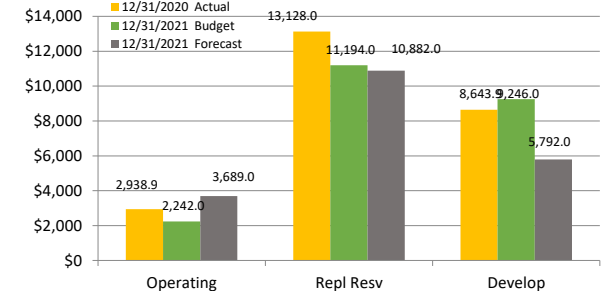
FORECAST ANNUAL 2021

Operating Fund | as of this report date



vs Budget: Revenue Fav -45,000/0% | NORBO Fav 750,000/11%

Members Equity Balances as of Year End 12/31/xx



2021 Budget Metrics	TDA Revenue Mix		per Owner	Annual Assessment (AA)		AA Capital Contributions		Operating Fund Revenue Mix
	AA Revenue	14,505,993 52%		996 44%	6,447,108 Operating Fund	801 64%	5,184,873 (64%) ReplResv	
	Operating Rev	13,282,829 48%		1245 56%	8,058,885 Capital Funds	0 0%	0 (0%) New Equip	
	Total Revenue	27,788,822 100%		2241 100%	14,505,993 Annual Assesm TL	444 36%	2,874,012 (36%) DevelopFd	
\$27.8 Million Revenue Requirement / Budget				an increase from 2020 of \$176 or 8%		1245 100%	8,058,885 (56%) TL, Cap Fds	19,729,937 (100%) Total