

# TRAILS + OPEN SPACE MASTER PLAN WORKSHOP

November 2, 2022





# PURPOSE + SCOPE

The purpose of the Trails Master Plan Update is to create a plan that affirms Tahoe Donner's commitment to land management, open spaces and trail systems while acknowledging evolving use patterns and the Association's desire to offer a spectrum of family-friendly recreational opportunities for hikers, equestrians and mountain bikers while providing year-round opportunities for outdoor recreation.

With community and stakeholder input, the new plan highlights areas where Tahoe Donner (TD) can increase the quality of user experiences and provide project recommendations that bring value to the homeowner experience.





# BACKGROUND

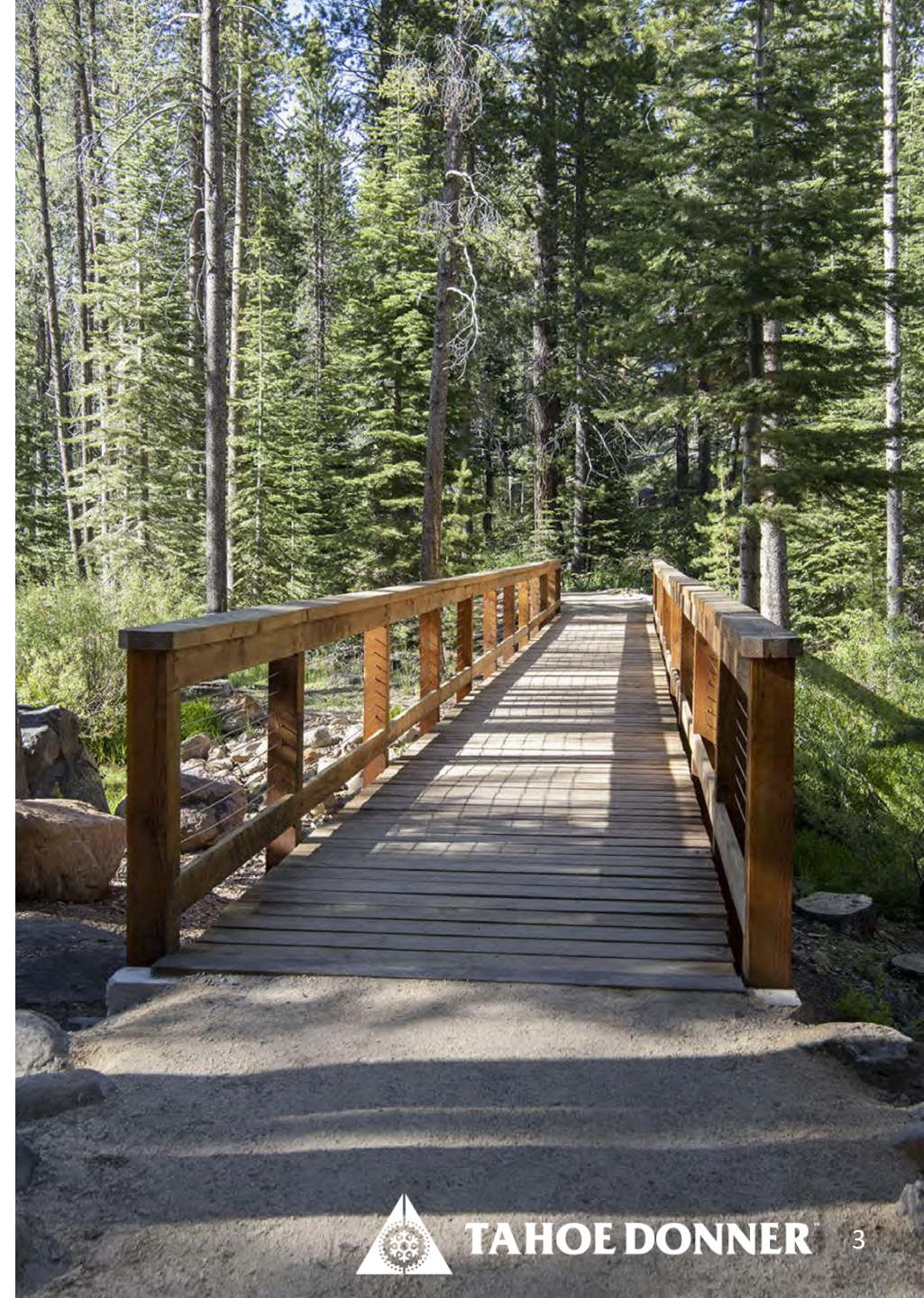
Tahoe Donner completed its first Trails Master Plan in 2013

## ACCOMPLISHMENTS

- Set policies and best management practices for trail system development and management
- Set budget and dedicated staffing for a Trails Department
- Plan recommendations went into a five-year development workplan

## WHAT HAS CHANGED

- 2013 plan recommended updating every five years
- Significant increase in trail usage
- New technologies (Class-1 e-bikes)
- External factors – COVID-19, increased primary occupancy, telework, public land closures
- Creation of Trails and Open Space Committee (TOS)





# RELATED MANAGEMENT DOCUMENTS

- 2016 Tahoe Donner 5-Year Trails Implementation Plan
- 2016 Tahoe Donner Land Management Plan (LMP)
- 2020 Tahoe Donner TOS Findings and Recommendations
- 2021 Tahoe Donner Strategic Plan

*These documents and other related information are available at [tahoedonner.com/trails](https://tahoedonner.com/trails)*







# NEXT STEPS

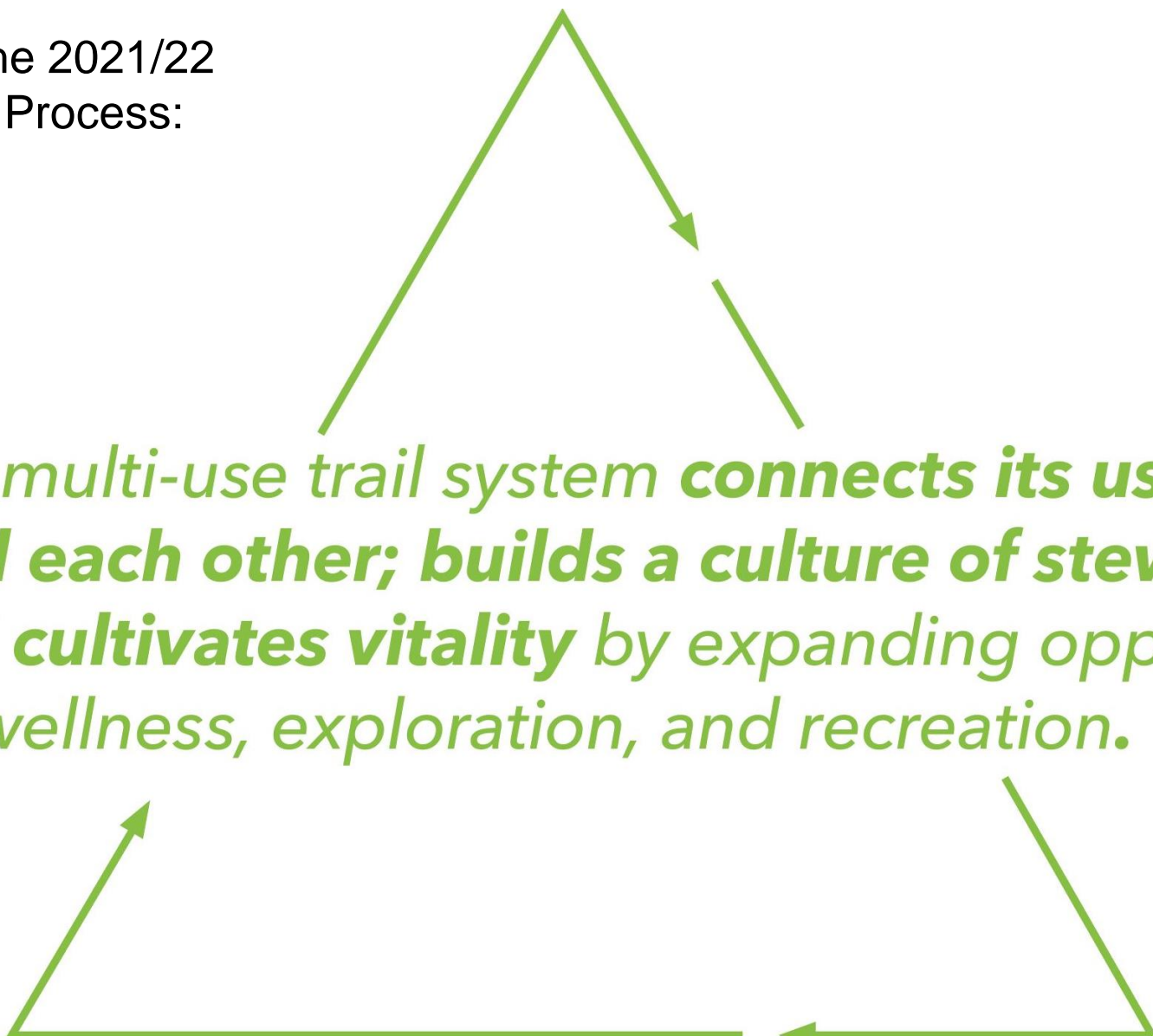
Tahoe Donner staff will create a management, prioritization and implementation plan based on the recommendations in this document. Staff will align prioritized projects based on member and TOS input.

- Update 2016 Land Management Plan to include acquisition and restoration opportunities
- Potentially create Timber Harvest Plan
- Integrate adopted TMP recommendations with LRPC recommendations



# TRAIL + OPEN SPACE VISION STATEMENT

Carried Through Into the 2021/22  
Trails Master Planning Process:



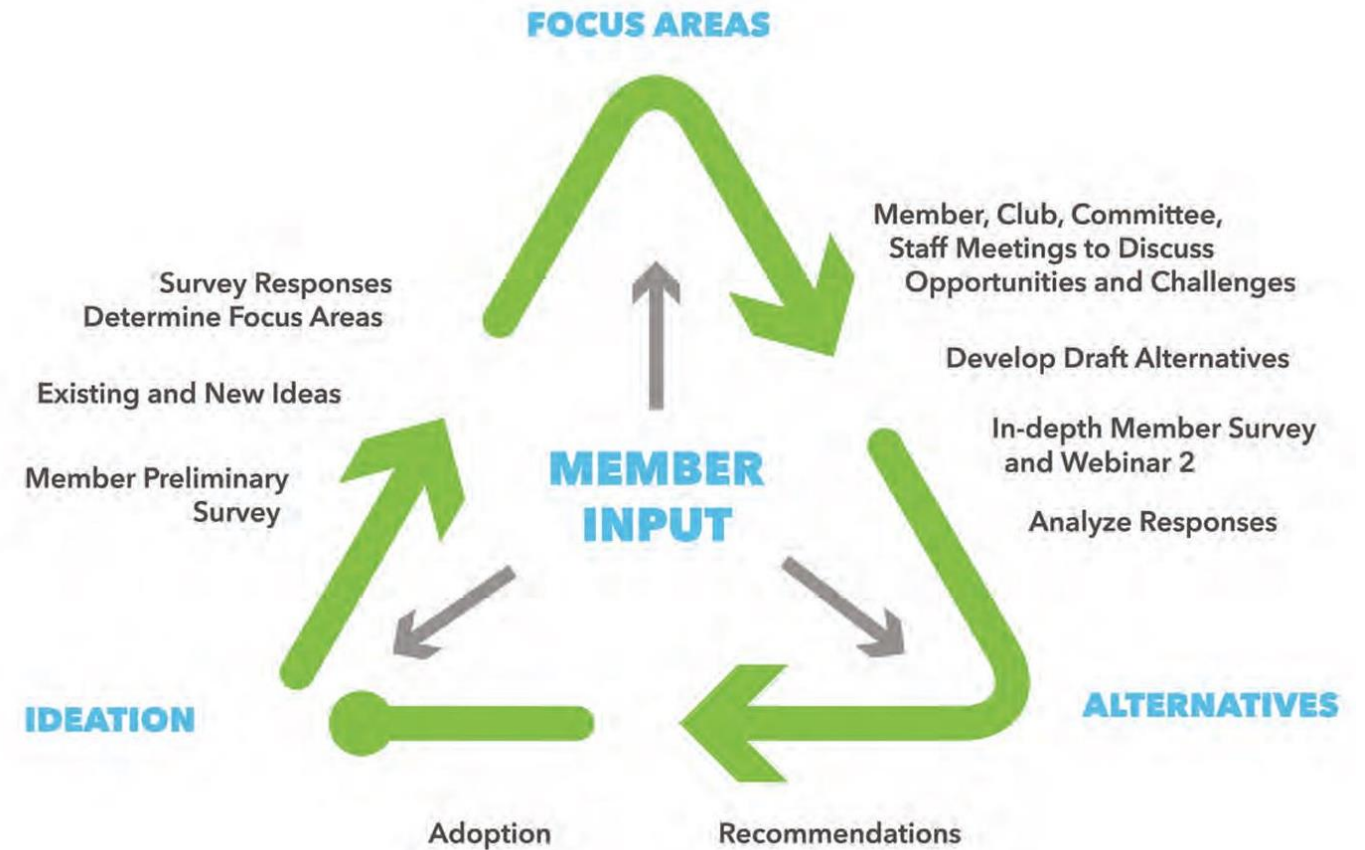
*Tahoe Donner's multi-use trail system **connects its users to nature, the region, and each other; builds a culture of stewardship and inclusion; and cultivates vitality** by expanding opportunities for wellness, exploration, and recreation.*





# ENGAGEMENT PROCESS

- 2 webinars
- 3 online surveys
- 3,644 survey responders
- 4 external stakeholder meetings
- 8+ TOS meetings





# DESIGN + PLANNING PROCESS

The consultant team worked collaboratively with Tahoe Donner staff while incorporating and confirming feedback from members, clubs and TOS input throughout the process.

This feedback was coupled with outside buy-in for the master plan from the major adjacent land managers including the Town of Truckee, Truckee Donner Land Trust and USFS. The process created an all-encompassing approach to the recommendations outlined in this document.

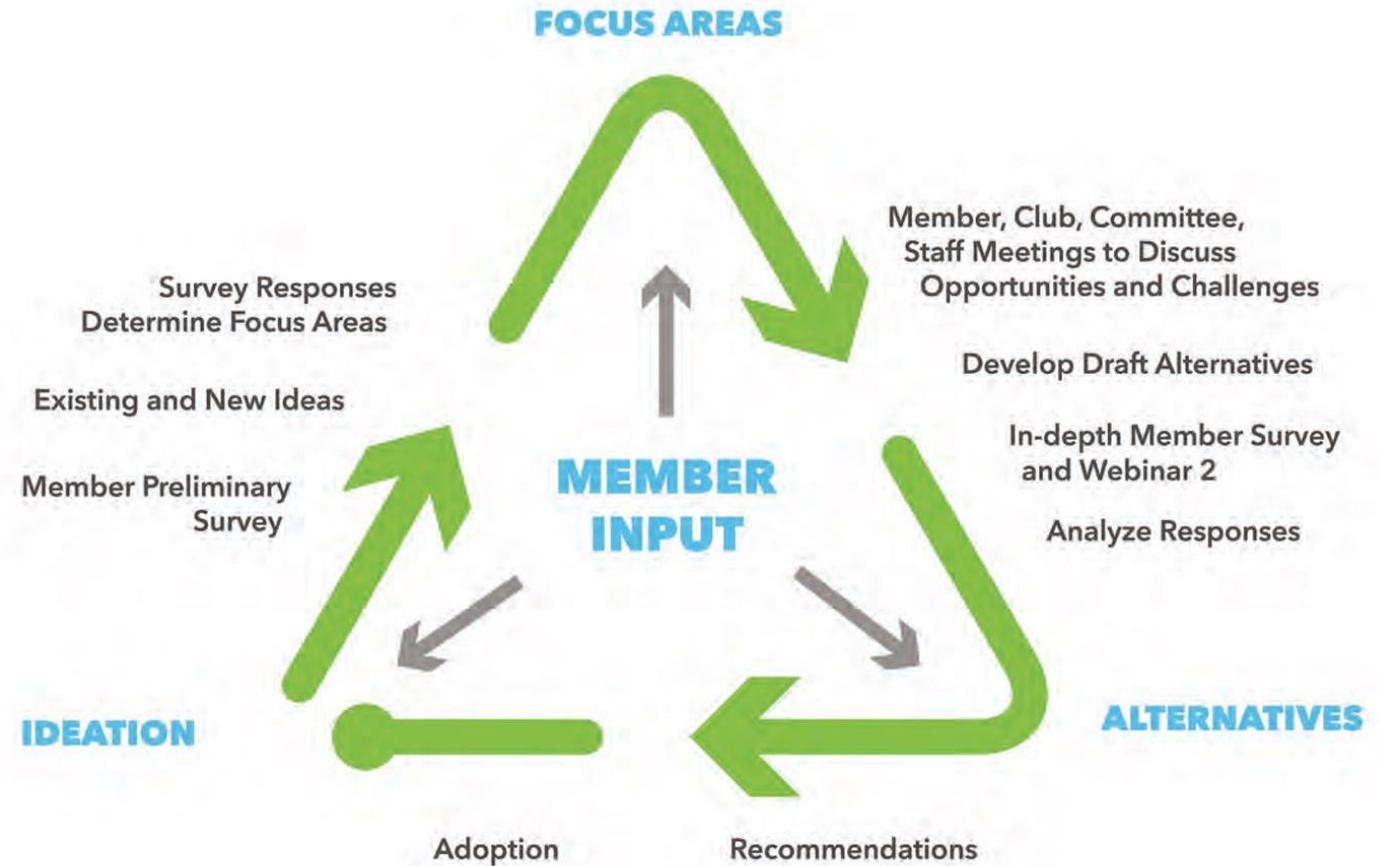




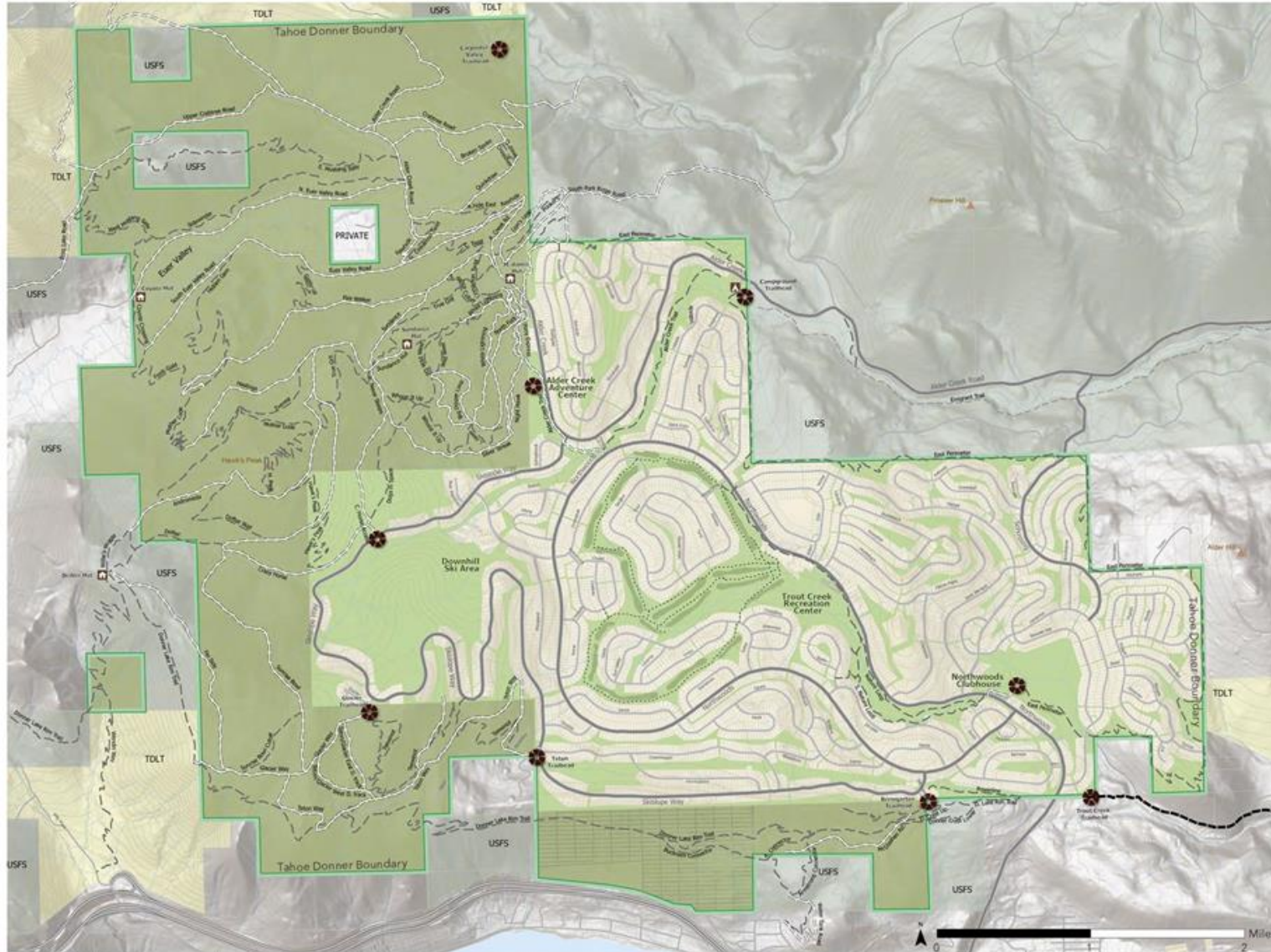


Figure 6: Project Timeline



# TRAIL CONNECTIONS

## Land Use Designation and Significant Ownership



Staff and consultants met with numerous external stakeholders for the trails planning process

Member survey results noted external trail connections as a top priority



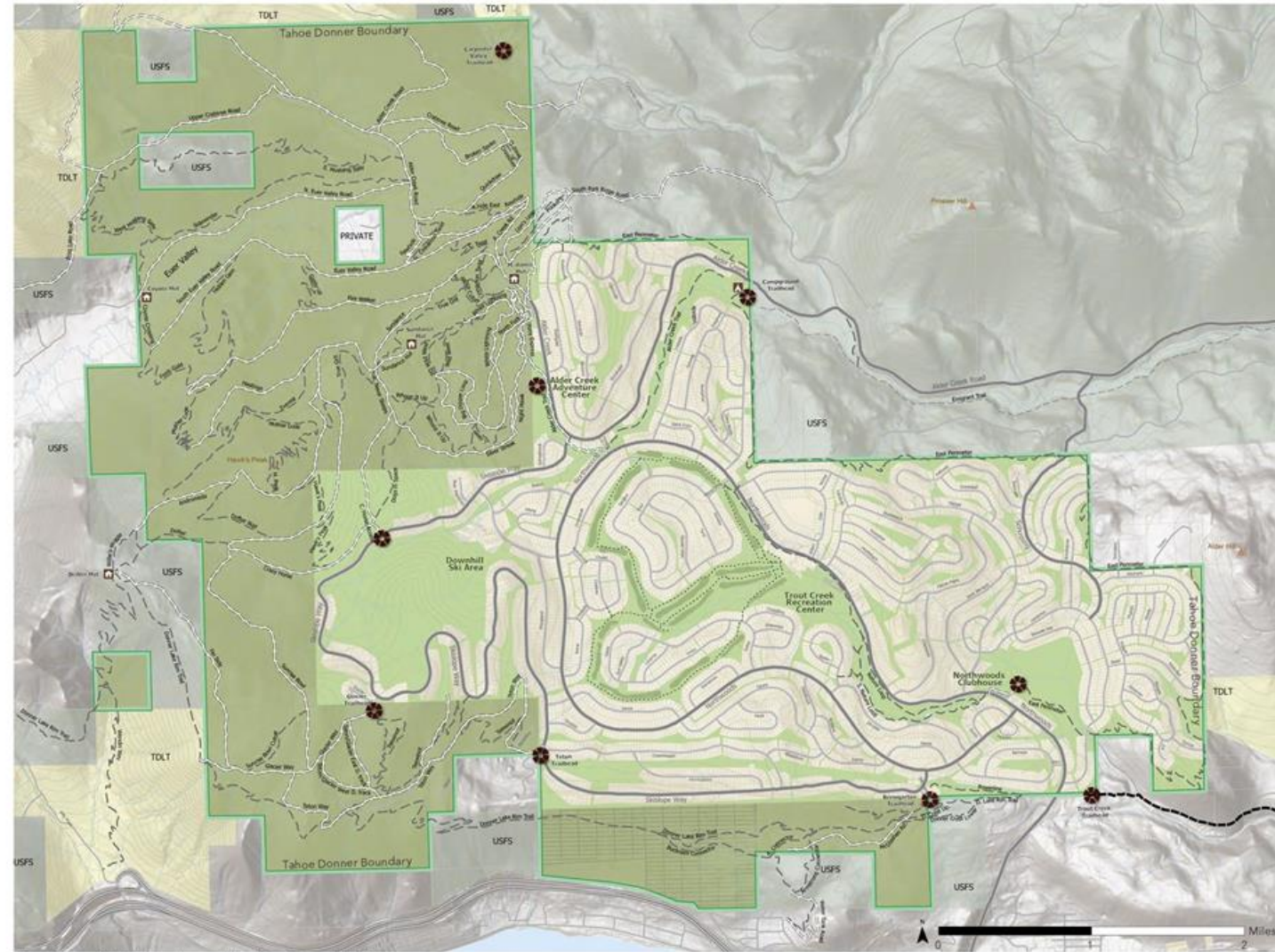


# PARTNERSHIPS

Tahoe Donner has public access Easements, Memorandums of Understanding and Joint Publicly Funded Infrastructure with:

- US Forest Service
- Truckee Donner Land Trust
- Town of Truckee
- Nevada County
- Truckee River Watershed Council
- Sierra Nevada Conservancy
- The Nature Conservancy
- California Department of Fish and Wildlife
- California State Parks
- CAL FIRE
- Truckee Fire Protection District

Land Use Designation and Significant Ownership





# ANALYSIS OF SITE CONDITIONS

- Regional ownership
- TDA land use designations
- Slope steepness
- Opportunities and constraints
- Site condition imagery
- Site condition navigation
- Trends and community comparisons



# FRAMEWORK FOR RECOMMENDATIONS



## Culture & Values

### Addresses

- Shared emotional connectedness
- Shared values and culture
- Multi-use network that will include user designated trails
- Trails oriented community
- Sustainable-design, build & use
- Inclusion of universal design trails



## Safety & Civility

### Addresses

- Tahoe Donner's values as stated in the vision, sets the expectation and etiquette for the trail system
- Improved signage/wayfinding in key areas and all trailheads
- User separation in congested areas due to conflicts
- Multi-use trails persist
- Slow zones & some one way trails
- Education over enforcement



## Popularity & Density

### Addresses

- Single user type trails in dense areas
- Monetization models for some use
- Sustainable design
- Increase maintenance and funding for the trail system
- Restrooms added in key locations (Euer Valley, select trailheads)
- Facilities close to density
- Ownership use trends
- Member & public, 501(c)(4)



## Connected Network

### Addresses

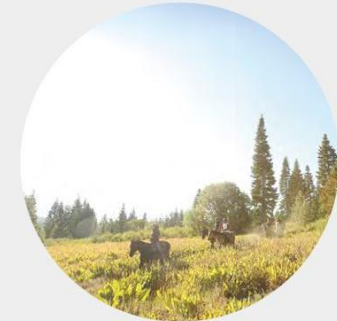
- Class I connection points
- Dirt trail connection points
- New and improved trailheads
- Connection to other land owner network-regional
- Connection to destinations
- Neighborhood connections



## Zonal & Designated Use

### Addresses

- Focused zones close to facilities
- Focus user types in zones where appropriate
- Separate new or distinct types of users into zones and/or designated use trails
- Use of downhill area for bike





# MEMBER SURVEY RESULTS

All user groups unanimously agreed on the following questions:

HIKERS	EQUESTRIANS	MOUNTAIN BIKERS
<ul style="list-style-type: none"> <li>• Exercise and Well-Being</li> <li>• Connection With Nature</li> <li>• Connections to Neighboring Trail Systems</li> <li>• Trail Access Near Home, Without Driving</li> <li>• Improved Wayfinding + Etiquette Signage</li> <li>• Hiker/Walker-Only Trails</li> </ul>	<ul style="list-style-type: none"> <li>• Exercise and Well-Being</li> <li>• Connection With Nature</li> <li>• Connections to Neighboring Trail Systems</li> <li>• Trail Access Near Home, Without Driving</li> <li>• Improved Wayfinding + Etiquette Signage</li> <li>• Hiker/Walker-Only Trails</li> </ul>	<ul style="list-style-type: none"> <li>• Exercise and Well-Being</li> <li>• Connection With Nature</li> <li>• Connections to Neighboring Trail Systems</li> <li>• Trail Access Near Home, Without Driving</li> <li>• Improved Wayfinding + Etiquette Signage</li> <li>• Hiker/Walker-Only Trails</li> </ul>
<p>What experiences are you seeking when entering natural landscapes 90%, 72%, Which trail system improvements will create a safer and more civil trail user environment, Which trail system improvement will mitigate the effects of trail popularity and user density, Select trail system connections most desirable for you and your family 72%, How desirable is having trail connections near your home 56%, Select trail system improvements most desirable for you and your family</p>		



# Member Engagement Summary



*From bikers to horseback riders and residents to visitors, the majority of survey respondents say that a **connection with nature and exercise and well-being** are the experiences they're seeking in the outdoors.*

## Culture & Values

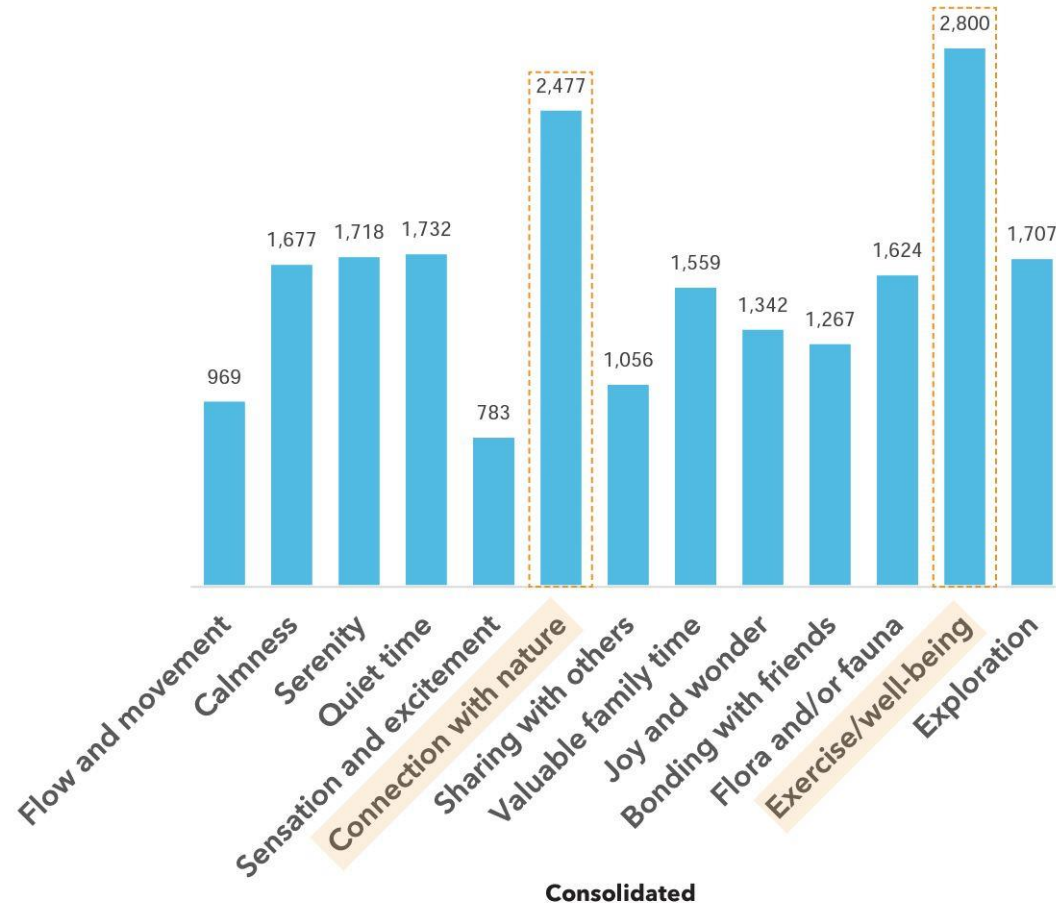
Hypothesized trail use "experiences" were offered for community resonance utilizing the March 2022 Trails and Open Space Survey, with a sample size of 3,100.

The survey revealed that user groups share common desired experiences. It is in fact striking how similar those desires are for each group and how they mimic trend lines of interest. This showcases common values within the community and a culture that is very focused on 'exercise and wellness' as primary interest and 'connection with nature' a close second. It is also noted that while there may be user groups of separate interest, it is also true that many hikers and runners are also bikers, and many bikers are also hikers and equestrians.

To have this shared alignment in a community is a cornerstone foundation that allows for clarity of vision, and to make infrastructure or program recommendations that support such a vision.

There is also clear and strong support for three values questions: 1. trail maintenance to maintain high standards of sustainability; 2. for tangible value increase in home value provided by trails; and 3. for non tangible value created by how the trails network improves time spent on property. All three of these questions support the general member survey which anchors trails as the most appreciated amenity.

**Recommendation:** Areas further out in the landscape offer a strong connection to nature. Signage and improvements should allow for a sense of moving through the natural environment.



*What experiences are you seeking when you enter natural landscapes?  
(Select all that apply)*



# TRAILS MASTER PLAN RECOMMENDATIONS



# POLICY RECOMMENDATIONS

POLICY DESCRIPTION		STATUS IN 2022 TRAILS PLAN
<b>GOAL 1</b>	<b>MANAGEMENT. ESTABLISH MANAGEMENT PRACTICES AND PROTOCOL FOR A COMPREHENSIVE TRAIL SYSTEM UTILIZED BY A DIVERSE POPULATION.</b>	
<b>Policy 1.1</b>	Benefit and Opportunities. The trail system in Tahoe Donner will be managed to benefit the community and provide a variety of recreational opportunities for all user types.	Retained as Best Management Practice.
<b>Policy 1.2</b>	Multi-Use Trail System. Tahoe Donner will provide a system of trails to accommodate a variety of users including hikers, joggers, bicyclists, equestrians, XC skiers, snowshoers, and dog owners.	Retained as Best Management Practice.
<b>Policy 1.3</b>	Trail System Rules. Management will work to establish and communicate trail system rules to reduce user conflict, effectively manage risk, and improve user experience.	Retained as Best Management Practice.
<b>Policy 1.4</b>	User Conflict. Management will work to reduce user conflict through trail design and maintenance, as well as working with users to establish and promote communication for trail sharing.	Retained as Best Management Practice.
<b>Policy 1.5</b>	Stewardship. Management of the trail system will make every effort to sustain the trail system and the surrounding environment through sound management practices and community involvement.	Retained as Best Management Practice.
<b>Policy 1.6</b>	Resource Conservation. Tahoe Donner will strive to practice resource conservation through its trail system, future development, and programs established for the trail system.	Retained as Best Management Practice.
<b>Policy 1.7</b>	Communication. Tahoe Donner will effectively communicate this Plan, projects, and programs, and welcome user feedback.	Retained as Best Management Practice.
<b>New Policy</b>	e-bikes. Class I e-bikes will be managed as mountain bikes and provided access to trails and roads open to standard mountain bikes.	Incorporated into new plan.
<b>GOAL 2</b>	<b>PLANNING. CREATE A FRAMEWORK AND FOCUS FOR TRAIL DESIGN, CONSTRUCTION, AND MAINTENANCE OF THE TRAIL SYSTEM THROUGH DEFINED STANDARDS AND PRIORITIES.</b>	
<b>Policy 2.1</b>	Trail Design, Construction, and Maintenance for user group needs. Trail design, construction, and maintenance will incorporate the needs of the user groups as specified in the recommended trails standards.	Retained as Best Management Practice.
<b>Policy 2.2</b>	Trail Standards. Development, construction, and maintenance of the trail system will conform to the recommended trail standards.	Retained as Best Management Practice.
<b>Policy 2.3</b>	Trail Type. The trail system should include multi-use and user-preferred trails of varying levels of difficulty and provide the opportunity to connect to other trail systems which may offer more trail class types.	New plan recommends multi-use and designated use trails to achieve higher quality and safer experience of user groups
<b>Policy 2.4</b>	Trail Location. Any improvement work on existing trails will consider the recommended trail standards and key destinations. New trail locations will align with the recommended trail standards for design, development, construction, and maintenance.	Retained as Best Management Practice.
<b>Policy 2.5</b>	Easement Use. Reasonable attempt will be made to avoid utilizing the recreation easements on private property for the trail system.	Use of recreational easements on private property is not recommended in this plan.
<b>Policy 2.6</b>	Connectivity of Tahoe Donner Community. Tahoe Donner trail system will attempt to connect to landmarks, vistas, and other locations within the Association.	This plan recommends using common areas to connect neighborhoods to amenities and key destinations. Development of these common area access points should conform to Tahoe Donner Architectural and Covenants guidelines.
<b>Policy 2.7</b>	Connectivity to Regional Trail Systems. Focus will be given on connecting the trail system with trail systems and points of interest in the region to the benefit of the membership.	Carried into new plan with mutual benefit as a consideration.





# POLICY RECOMMENDATIONS CONTINUED

POLICY DESCRIPTION		STATUS IN 2022 TRAILS PLAN
<b>GOAL 3</b>	<b>DEVELOPMENT. ESTABLISH GUIDANCE FOR TRAIL DEVELOPMENT AND CONSTRUCTION TO ACHIEVE BEST PRACTICES AND PRUDENT FUNDING MECHANISMS.</b>	
<b>Policy 3.1</b>	New Development. New development of trails will incorporate the recommended goals and policies. Development of trails will be at a level appropriate to the surroundings.	Retained as Best Management Practice.
<b>Policy 3.2</b>	Evaluation Process. All projects will be evaluated individually for safety, feasibility, cost analysis, and environmental impact.	Retained as Best Management Practice.
<b>Policy 3.3</b>	Trail System Phasing. Phasing of trail system improvements will be based on project priority and funding availability. Project priority will be based on safety needs, environmental impact, member input, and the ability of the project to add immediate value to the existing trail system.	This plan recommends implementation of multiple use and designated use trail improvements. Recommend prioritizing trail improvements that add immediate value, quality enhancements for both individual user groups and broader multiple use trail system.
<b>Policy 3.4</b>	Construction Best Management Practices. Trail and ancillary facility construction will be consistent with best management practices to ensure goals and policies are achieved as well as minimize natural resource and neighbor impacts for the short- and long-term.	Retained as Best Management Practice.
<b>Policy 3.5</b>	Project Management Best Practices. Every effort will be made to plan, implement, and execute each project thoroughly.	Retained as Best Management Practice.
<b>Policy 3.6</b>	Agency Approval. Trail construction will be compliant with all relative land use and development regulations.	Retained as Best Management Practice.
<b>Policy 3.7</b>	Tahoe Donner Association Funding. Funding will be considered for the development, construction, and maintenance of the trail system.	Retained as Best Management Practice.
<b>Policy 3.8</b>	Outside Funding. Federal, State, and private grant funds will be reviewed for the benefit of the trail system.	Retained as Best Management Practice.
<b>New Policy</b>	Adaptive Management: These recommendations represent the current needs and desires for trail improvements at Tahoe Donner, through adaptive management practices, changing use patterns, and developments will be addressed with ongoing management by Tahoe Donner staff and the TOS Committee.	Incorporated into new plan.
<b>GOAL 4</b>	<b>MAINTENANCE. PROVIDE FOR STANDARDIZATION OF TRAIL SYSTEM MAINTENANCE.</b>	
<b>Policy 4.1</b>	Asset Preservation. Tahoe Donner will strive to maintain the trail system, ancillary structures, and the surrounding recreation space for sustainability.	Retained as Best Management Practice.
<b>Policy 4.2</b>	Regular Maintenance. This Plan will serve as strategic guidance for the standard and type of maintenance to occur on the trail system.	Retained as Best Management Practice.
<b>Policy 4.3</b>	Inspection. Regular systematic inspections of the trail system will occur to prevent and mitigate degradation of use, minimize hazards and risk, and promote general trail activity, and feedback through trail presence by staff and the membership.	Retained as Best Management Practice.



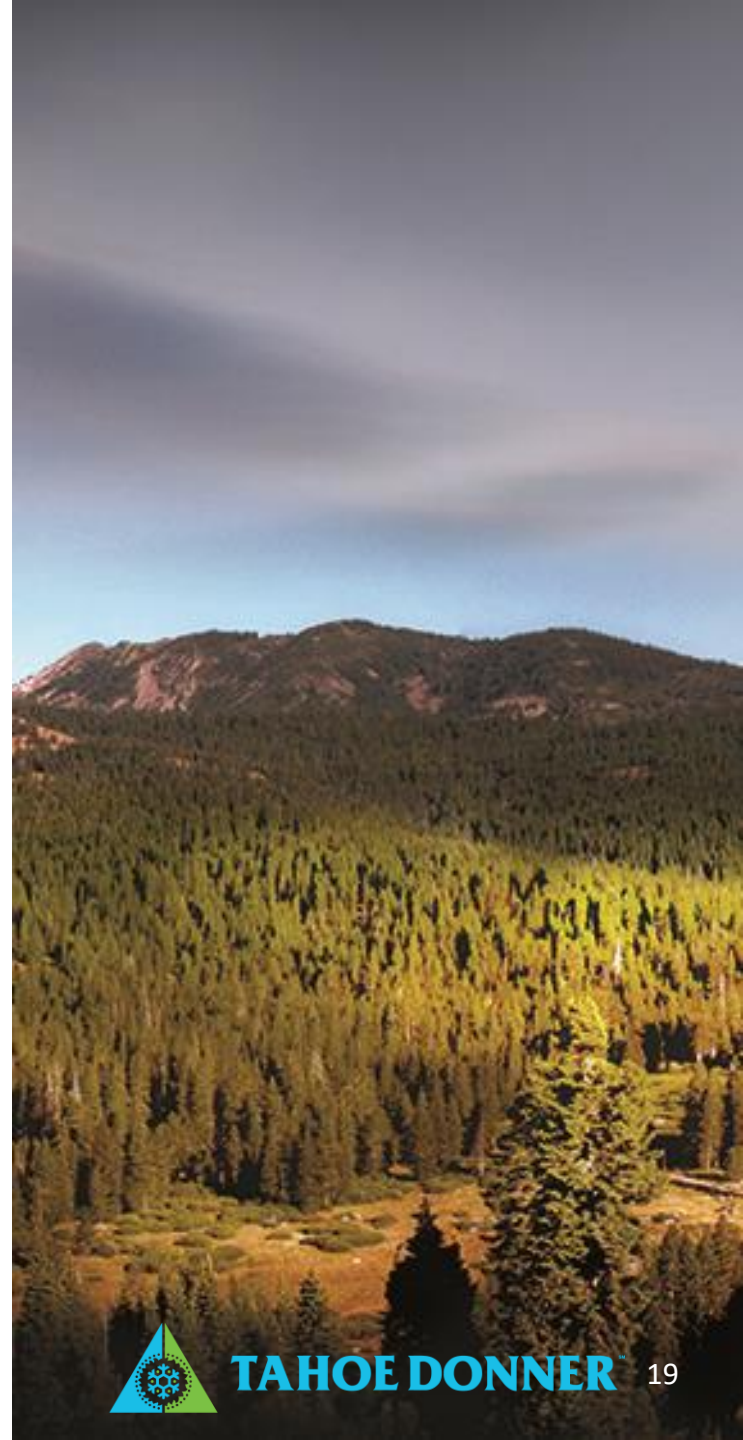
# PUBLIC USE

Legal considerations regarding public use that Tahoe Donner must adhere to include:

- Multiple Conservation easements requiring public access
- Over 80 acres of USFS inholding with ingress
- Egress requirements with adjacent USFS properties
- 501(c)(4) designation

Tahoe Donner also receives public grant funds that require public access as a condition of funding (such as the Euer Valley restoration project)

*Learn more on page 7 of the Master Plan draft*





# E-BIKES

- Staff, consultants and neighboring land managers concur that Class 1 e-bikes are best managed as mountain bikes
- Staff and consultants recommend focusing efforts on improving mountain bike management and creating designated equestrian- and hiker-only trails (no bicycle traffic)

*Learn more on page 10 of the Master Plan draft*



# DOGS

Dogs are managed in existing Covenants Rule 2.13, but may be unclear to all members:

- All dogs in Tahoe Donner Common areas and facilities must be leashed
- Dogs on other associated-owned property fall under Nevada County Article 1.47 and may be unleashed if under visual and voice control

It is recommended that staff work with the TOS and Covenants Committee to clarify/update dog management policies

*Learn more on page 8 of the Master Plan draft*





# ADAPTIVE MANAGEMENT

Draft plan recommendations represent the current improvements to management practices, changing use patterns and developments

Through adaptive management, staff and TOS will refine trail management and designation versus implementing all significant changes at once

*Learn more on page 11 of the Master Plan draft*



# TRAIL RECOMMENDATION DESCRIPTIONS

## Trail Standards

Tahoe Donner utilizes the USFS Trail Class Matrix in the construction of new and existing trails. This is intended to provide consistency with adjacent land managers, while providing best management practices consistent with national standards.

In the implementation of the TMP, Tahoe Donner staff may identify the appropriate USFS Trail Class for each trail or trail segment based on the intended use. Please note these trail classifications differ from those defined by Caltrans for paved paths and roadway bike lanes.

In addition, Tahoe Donner staff may use the USFS Trail Design Parameters as a technical guideline for the survey, design, construction, maintenance, and assessment of trails based on their designated use (hike/pedestrian, bike, equestrian).

The following Trail Classes are represented at Tahoe Donner, refer to USFS Trail Class Matrix (FSH 2353, Section 14.2, Exhibit 01') for full descriptions:

Trail Class 1	Minimally Developed
Trail Class 2	Moderately Developed
Trail Class 3	Developed
Trail Class 4	Highly Developed
Trail Class 5	Fully Developed

## Proposed Improvements Descriptions

Below defines the proposed improvements shown on the following maps.

ITEM	DESCRIPTION
External Trail Connections	Potential trails leaving Tahoe Donner property providing larger regional connections on adjacent public lands. Destinations, design elements, and allowable uses will be determined through collaborative planning with adjoining land owners and land managers.
Class I Paved Path	Off-street paved shared use paths, minimum of 8' wide with gradual slopes, consistent with Town of Truckee standards. Users may include but are not limited to, bicyclists, wheelchair users, pedestrians, including walkers, runners, people with baby strollers, and people walking dogs,
Multi-use Trail	Native surface "single track" trails, designed to accommodate a variety of users on the same trail. May follow the USFS Trail Class Matrix and USFS Trail Design Parameters.
Equestrian Trail	Native surface "single track" trails, designed for equestrian use. May follow the USFS Trail Class Matrix and USFS Trail Design Parameters for Pack and Saddle.
Bike Optimized Trail & Flow Trails	Trails built from native or imported dirt trails, designed for mountain bike use and may include features like banked turns, rolling terrain, jumps, and other skill building features. May follow the USFS Trail Class Matrix and USFS Trail Design Parameters for Bicycles.
Inclusive Trail	Smooth surface trails, typically made of native or imported material (such as decomposed granite) that generally conforms ADA standards, designed for people of all ages and abilities. Typically 4-6 feet wide with grades not to exceed 5%.
Boardwalk	Elevated wooden walkway that sensitively crosses over a wetland or meadow.
New Trailhead	Formalized access point to the trail network that may include parking, maps, and signs to improve user navigation and etiquette.
Zonal Land Use	Areas that are designated for the optimized use of certain user groups (equestrians, mountain bikers, hikers).





# TRAIL RECOMMENDATION GOALS

ENGINEER	EDUCATE	ENFORCEMENT
<ul style="list-style-type: none"><li>• Attract users to trails designed specifically for their desired experiences</li><li>• Mitigate attractive nuisances</li><li>• Zonal management</li></ul>	<ul style="list-style-type: none"><li>• Create clear etiquette and wayfinding signage</li><li>• Set expectations at access points</li></ul>	<ul style="list-style-type: none"><li>• Build social norms and expectations</li><li>• Field staff reiterate clear signage and expectations</li></ul>

## DESIGN ELEMENTS

ALL USERS	CREATE A TRAIL SYSTEM THAT OFFERS A WIDE RANGE OF HIGH-QUALITY EXPERIENCES FOR ALL AGES AND ABILITIES	TRAIL ENGINEERING CLASSIFICATION, SURVEY RESULTS, HIGHLY DEVELOPED, DEVELOPED MODERATELY DEVELOPED, (SEE USFS MATRIX)
HIKERS	<ul style="list-style-type: none"><li>• Create new easy-access walking trails</li><li>• Designate longer-distance hiking-only trails</li><li>• Remove bike elements from hiking trails</li></ul>	<ul style="list-style-type: none"><li>• Highly developed: 14%</li><li>• Developed: 45%</li><li>• Moderately developed: 61%</li><li>• All: 25%</li></ul>
MOUNTAIN BIKERS	<ul style="list-style-type: none"><li>• Create easy-access, family-friendly bike trails</li><li>• Create/redesignate bike-optimized longer-distance loops</li></ul>	<ul style="list-style-type: none"><li>• Highly developed: 39%</li><li>• Developed: 42%</li><li>• Moderately developed: 39%</li><li>• All: 31%</li></ul>
EQUESTRIANS	<ul style="list-style-type: none"><li>• Create zones of safety</li><li>• Minimize trail connections with bikes</li></ul>	<ul style="list-style-type: none"><li>• Highly developed: 17%</li><li>• Developed: 51%</li><li>• Moderately developed: 35%</li><li>• All: 25%</li></ul>

# EXAMPLES OF AREAS OF IMPROVEMENT

Bike features exist on multiple-use trails





# EXAMPLES OF AREAS OF IMPROVEMENT CONT'D

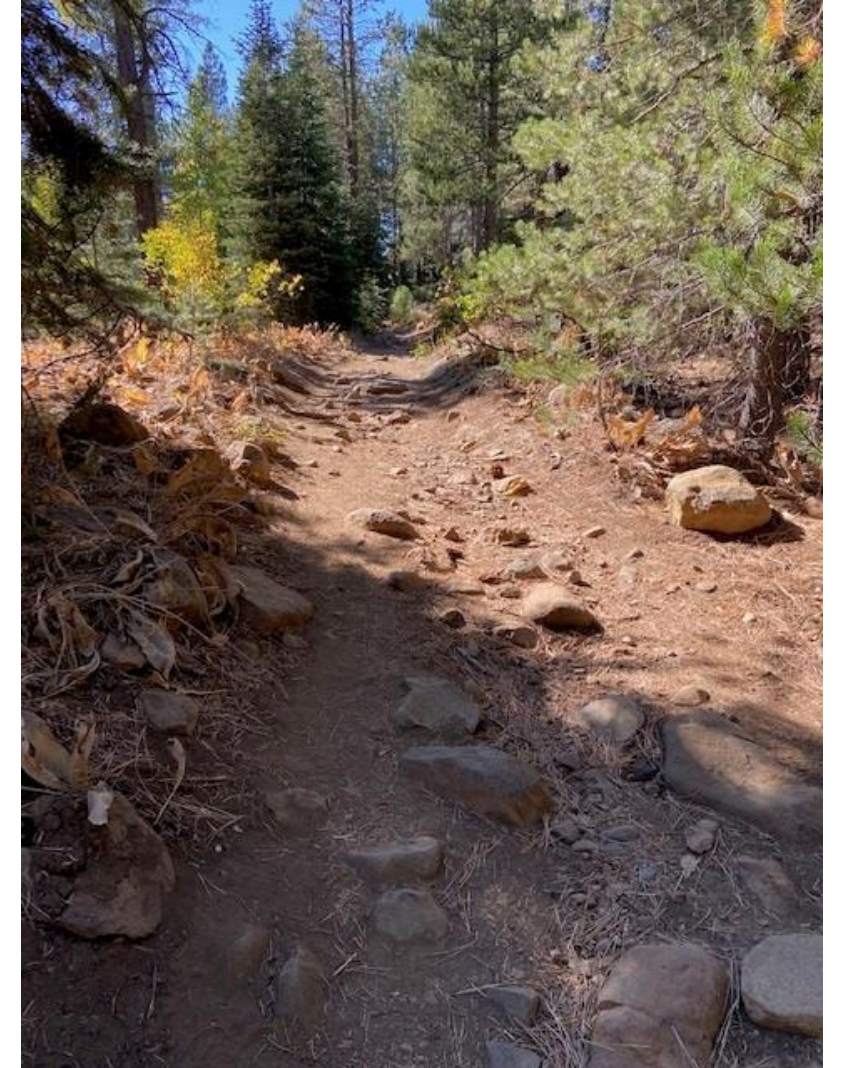
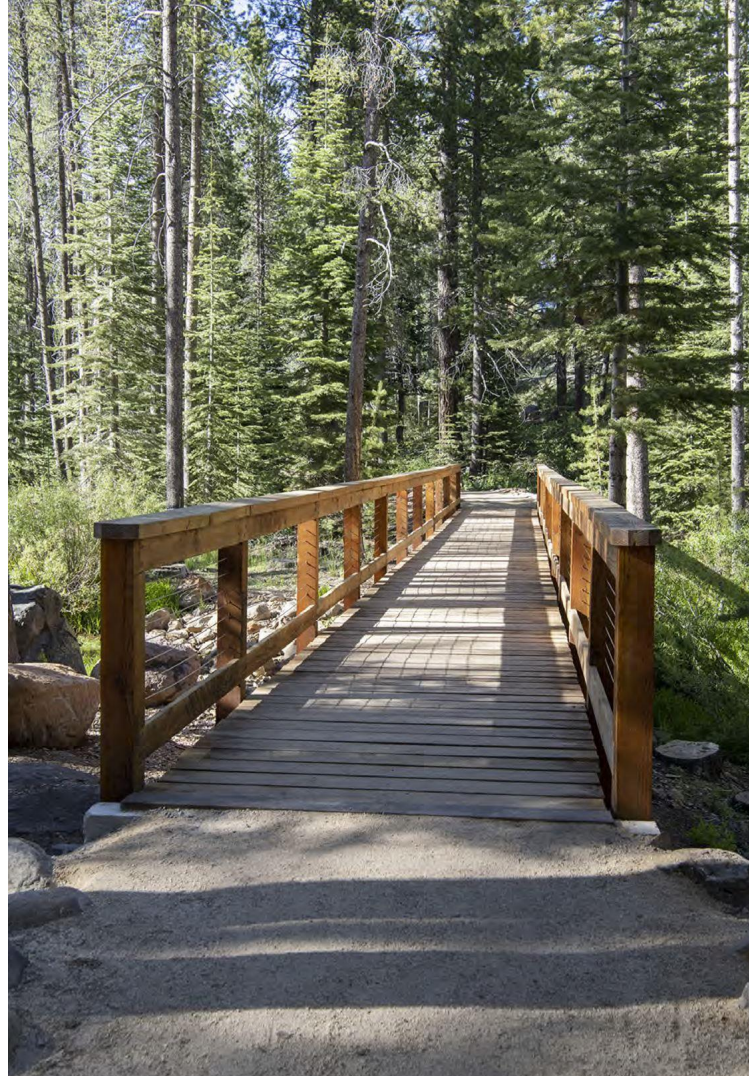
Designated equestrian trails in wetlands have inadequate bridges





# EXAMPLES OF AREAS OF IMPROVEMENT CONT'D

Nature Loop Trail has  
loose and unsure footing





# EXAMPLES OF AREAS OF IMPROVEMENT CONT'D

With 6,473 properties in Tahoe Donner, 6 parking spots are at the Glacier Way Trailhead





# PRELIMINARY TRAIL RECOMMENDATIONS

51 preliminary trail recommendations to improve member enjoyment and protect the environment

## EXTERNAL CONNECTIONS

- Project E1: Carpenter Valley Connection**  
Description: Provide a multi-use trail connection to Carpenter Valley connecting to the existing Truckee Donner Land Trust trailhead. This will help alleviate the unsanctioned trails in this area and potential to collaborate with USFS fuels reduction projects.
- Project E2: Prosser Connection**  
Description: Provide a multi-use trail connection to Prosser Hill. This will help alleviate the unsanctioned trails in this area and potential to collaborate with USFS fuels reduction projects.
- Project E3: Emigrant Connection**  
Description: Provide a multi-use trail connection to Emigrant Trail. Potential to collaborate with USFS fuels reduction projects.
- Project E4: Mougles to Truckee**  
Description: New Class I Paved Trail connecting Mougles Lane to the Town of Truckee's paved trail system. This connection is shown in the 2015 Trails and Bikeways Master Plan, approved by the Town of Truckee.
- Project E5: Berggarten to Armstrong**  
Description: New trail connecting Berggarten Trailhead to the Armstrong neighborhood. This connection is identified in the 2015 Trails and Bikeways Master Plan, approved by the Town of Truckee.
- Project E6: Frog Lake Connection**  
Description: In partnership with the Truckee Donner Land Trust, this connection will provide a multi-use trail link to Frog Lake via Mustang Sally.
- Project E7: Red Mountain Connection**  
Description: In partnership with the Truckee Donner Land Trust, this connection will provide a multi-use trail link to Red Mountain from Crabtree Road.

## NEW PAVED CLASS I TRAILS

- Project C1: Mougles to Truckee**  
Description: Connection from Mougles to Truckee as identified in the 2015 Trails and Bikeways Master Plan. Stats: Approximately 1 mile long, 220 feet of elevation change
- Project C2: Trout Creek to ACAC and DH Ski Area**  
Description: Connection from the end of the existing Trout Creek paved trail through the center of Tahoe Donner, connecting Northwoods Clubhouse, Trout Creek Recreation Center and ACAC with a spur connecting to the Downhill Ski Area. Stats: Approximately 4.5 miles long, 600 feet of elevation change
- Project C3: Recreation Center to Swiss Lane**  
Description: Paved trail connecting through the golf course, providing a bike and pedestrian connection to the Swiss Lane neighborhood. Stats: Approximately 2,000 feet long, 100 feet of elevation change

## NEW DIRT TRAILS

- Project 1: Crabtree**  
Description: New multi-use trail connecting the east end of Euer Valley to the north end of Tahoe Donner property with the potential to connect into future regional trail plans by TDLT. Stats: Approximately 1.3 miles long, 500 feet of elevation change
- Project 2: Sidewinder Extension**  
Description: New multi-use trail connecting the east end of Sidewinder to East Mustang Sally. Currently trail users need to connect these two single track trails with a dirt road. Stats: Approximately 700 feet long, 15 feet of elevation change
- Project 3: Lower Cinnamon Twist**  
Description: New multi-use trail connecting the two lower sections of Cinnamon Twist. Currently trail users need to connect these two sections of single track with a dirt road. Stats: Approximately 1,000 feet long, 70 feet of elevation change
- Project 4: Rawhide Equestrian Extension**  
Description: New equestrian only trail connecting the new equestrian zone to Rawhide Trail providing an improved equestrian only access to Euer Valley. Currently equestrians need to exit the equestrian center on dirt roads or busy multi-use trails, this equestrian only access will improve that experience. Stats: Approximately 4,000 feet long, 200 feet of elevation change
- Project 4a: Foot-only Euer Valley Connection**  
Description: New foot only trail connecting from the top of Cinnamon Twist to Euer Valley. Stats: Approximately 1,000 feet long, 150 feet of elevation change
- Project 5: Equestrian Loop**  
Description: New equestrian only trail looping around the new equestrian zone. Stats: Approximately 3,500 feet long, 40 feet of elevation change
- Project 6: Family Flow Trails**  
Description: New bike optimized trails of beginner to intermediate skill level in close adjacency to ACAC. These trails will serve as a way for families and new mountain bikers to hone their skills in a zone dedicated to mountain bikers. Stats: Three trails, each approximately 1,800 feet long, 160 feet of elevation change each
- Project 7: Whoop It Up Extension**  
Description: New multi-use trail connecting ACAC to Whoop It Up single track. A new boardwalk is proposed on the west side of ACAC, located in a way not to interfere with winter operations. Some decommissioning of existing trails and roads in this area will need to occur. Stats: Approximately 2,200 feet long, 100 feet of elevation change
- Project 8: Springbrook Connector**  
Description: New multi-use trail connecting a new

- trailhead at Springbrook/Skislope to Whoop It Up Extension. Stats: Approximately 1,000 feet long, 20 feet of elevation change
- Project 9: Foot-only Northwoods**  
Description: New foot-only trail built to ADA standards providing easy access for all users in the area on the edges of the meadow behind Northwoods Clubhouse. Stats: Approximately 1 mile long, 40 feet of elevation change
- Project 10: Foot-only Berggarten**  
Description: New foot-only trail built to ADA standards providing easy access for all to an overlook from Berggarten Trailhead. Stats: Approximately 2,500 feet long, 200 feet of elevation change
- Project 11: Foot-only Glacier**  
Description: New foot-only trail built to ADA standards providing easy loop for all from the Glacier Trailhead. Stats: Approximately 1 mile long, 100 feet of elevation change
- Project 12: Glacier Connector**  
Description: New multi-use trail connecting Glacier Trailhead to the Donner Lake Rim Trail. Stats: Approximately 1 mile long, 100 feet of elevation change
- Project 13: DH Ski Area to Teewinot**  
Description: New multi-use trail connecting Teewinot Trail across Skislope Way to the new Ski Area Loop Trail. Stats: Approximately 1,700 feet long, 60 feet of elevation change
- Project 14: DH Ski Area to Glacier**  
Description: New multi-use trail connecting Glacier Trailhead across Skislope Way to the new Ski Area Loop Trail. Stats: Approximately 3,400 feet long, 120 feet of elevation change
- Project 15: DH Ski Area Loop**  
Description: New multi-use trail looping around the Downhill Ski Area, providing larger connections within Tahoe Donner. Stats: Approximately 3 miles long, 700 feet of elevation change
- Project 16: Downhill Ski Area Trails**  
Description: New bike optimized trails of intermediate skill level that could be accessed by pedaling uphill on the new Ski Area Loop Trail, or by lift service on the existing chairlifts. These trails will help concentrate mountain bikers in a new bike only zone as well as serve many families. Stats: Approximately 3 miles long, 700 feet of elevation change
- Project 17: Sunrise Trail**  
Description: New multi-use trail traversing the Sunrise Bowl, providing larger connections from Glacier Trailhead to Hawk's Peak Trail. This trail was identified in the 2016 YIP but not built.

- Stats: Approximately 1 mile long, 300 feet of elevation change
- Project 18: Dogs in Space Extension**  
Description: New multi-use trail connecting from the new Ski Area Loop Trail, across Skislope to Dogs in Space and Hawk's Peak Trail, continuing towards ACAC. Stats: Approximately 1 mile long, 500 feet of elevation change
- Project 19: Willie's Wiggle Extension**  
Description: New multi-use trail connecting Willie's Wiggle Trail to Hawk's Peak. Stats: Approximately 4,000 feet long, 150 feet of elevation change
- Project 20: Fool's Gold Extension**  
Description: New multi-use trail connecting the bottom of Fool's Gold to Coyote Hut. Stats: Approximately 1,300 feet long, 50 feet of elevation change
- Project 21: South Euer Valley Cross Slope**  
Description: New multi-use trail connecting Sundance Hut to Euer Valley at the bottom of Hidden Gem. Stats: Approximately 1.5 miles long, 250 feet of elevation change
- Project 22: Hawk's Peak**  
Description: New multi-use trail for hikers and equestrian to access Hawk's Peak. Stats: Approximately 1.1 miles long, 590 feet of elevation change

## IMPROVE EXISTING DIRT TRAILS

- Project A1: Alder Creek Trail**  
Description: Upgrades including realignment out of wet areas, bridges, and trail tread improvements. Stats: Approximately 1 mile long
- Project A2: Hillside Trail**  
Description: Upgrades to fix this eroding trail. Potential to decommission if it's not possible to fix the erosion problems. Stats: Approximately 2,500 feet long
- Project A3: East Perimeter Trail North**  
Description: Upgrades including realignment out of wet areas and off Forest Service Land, and trail tread improvements. Stats: Locations to be determined in the field
- Project A4: East Perimeter Trail South**  
Description: Upgrades including realignment out of wet areas and off USFS land, and trail tread improvements. Stats: Locations to be determined in the field
- Project A5: East Perimeter Trail South**  
Description: Upgrades including new boardwalks and trail tread improvement. This project was identified in the 2016 YIP but not built. Stats: Locations to be determined in the field
- Project A6: Willie's Wiggles**  
Description: Upgrades including trail tread improvement and agreement with the USFS to

- allow this trail on their land. Stats: Locations to be determined in the field
- Project A7: Mother Lode**  
Description: Upgrades including trail tread improvements, sight line improvements and realignment of sections to improve user experience. Stats: Locations to be determined in the field
- Project A8: West Mustang Sally**  
Description: Upgrades including trail tread improvement, sight line improvements and realignment of sections to improve user experience. Stats: Locations to be determined in the field

## NEW AND IMPROVED TRAILHEADS

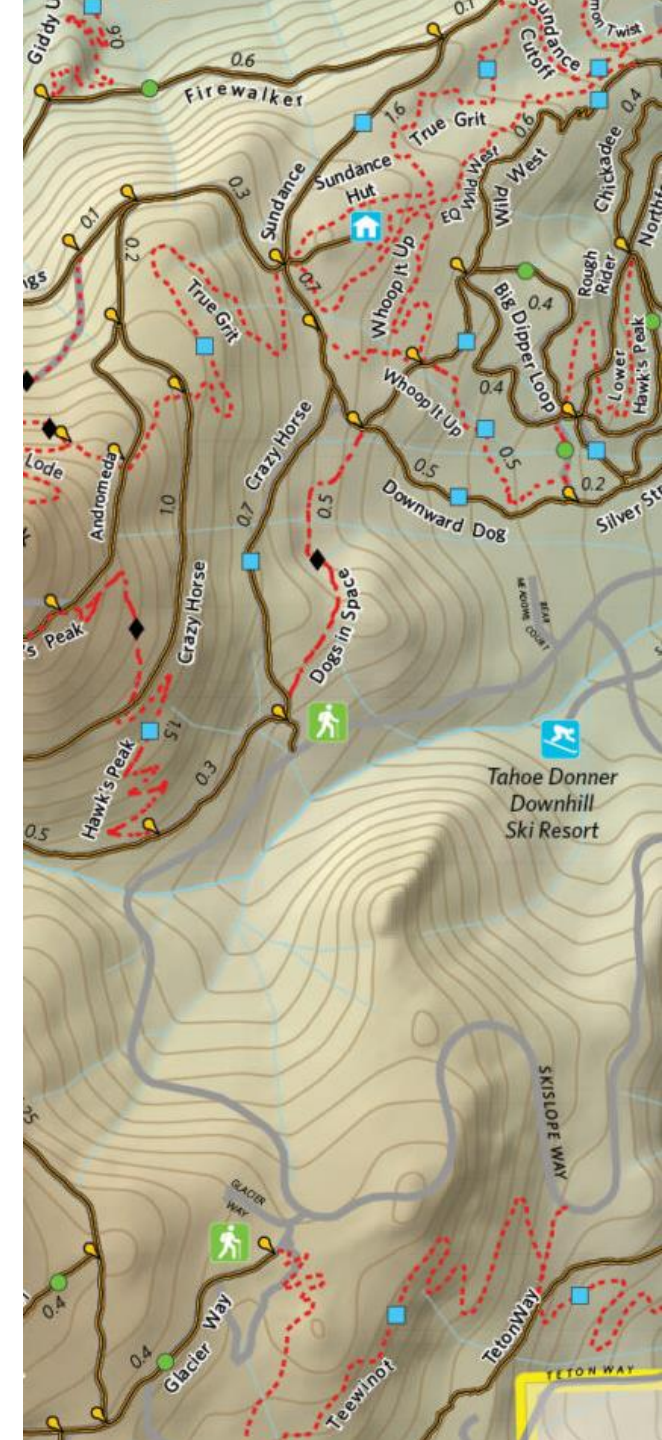
- Project T1: New Moondance Hut TH**  
Description: New trailhead with parking at the end of Alder Creek Road. Summer only.
- Project T2: Alder Creek Adventure Center (ACAC) Improvements**  
Description: Reconfigure parking, trail intersections and overall wayfinding to optimize ACAC as a summer and winter trail hub.
- Project T3: New Springbrook TH**  
Description: New trailhead to provide summer and winter users access to the trails without bringing further congestion to ACAC.
- Project T4: New Downhill Ski Area TH**  
Description: New formal trailhead that uses the existing downhill ski area parking lot for summer use connecting to the new multi-use trails at the ski area and surrounding land.
- Project T5: New Hansel Mailboxes TH**  
Description: New trailhead near the mailboxes with improved access to East Perimeter Trail. Summer only.
- Project T6: Improved Hawk's Peak TH**  
Description: Improvements including parking and signage at Skislope and Dogs in Space.
- Project T7: New Swiss Lane TH**  
Description: New access point trailhead on Swiss Lane connecting to the new Class I paved path, no parking.
- Project T8: New Top Shop TH**  
Description: New access point trailhead on Skislope connecting to the new Ski Area Loop Trail and Teewinot Trail.
- Project T9: Improved Glacier TH**  
Description: Improvements to the existing Glacier Trailhead.
- Project T10: Improved Teton TH**  
Description: Improvements to the existing Teton Trailhead.



# MAPS

Maps used within this project (can be found in the appendix):

- Alder Creek + Euer Valley North
- Compiled Map of Improvements
- External Connections
- New + Improved Trailheads
- New Equestrian Trails
- New Inclusive Trails
- New Mountain Bike Trails
- New Paved Class 1 Trails
- New Walking + Hiking Trails
- New Winter Recreation Opportunities
- USFS Land Encroachment



# PROGRAMMATIC CONCEPTS

The following concepts were developed for strengthening existing programmatic offerings, raising the quality of member experiences and developing sustainable funding sources for infrastructure maintenance





# POTENTIAL PROGRAMMATIC OPPORTUNITIES

Based on what was heard from TOS, Clubs, Members, Staff, and Adjacent Land Managers, the Element Matrix was developed to suggest many possibilities to improve access to new trail concepts, programmatic activations, and general improvements. **Not all elements listed here evolved to become recommendations.**

This plan does not recommend charging a fee for general summer trail access. Consultants and staff do recommend strengthening and further developing programmatic offerings through Bikeworks and the Equestrian Center to activate the summer season of the Alder Creek Adventure Center facility (ACAC). The fiscal engine of ancillary program offerings would support Food & Beverage services, increase employee opportunities, and support maintenance and development of the summer trail system.

## Element Matrix

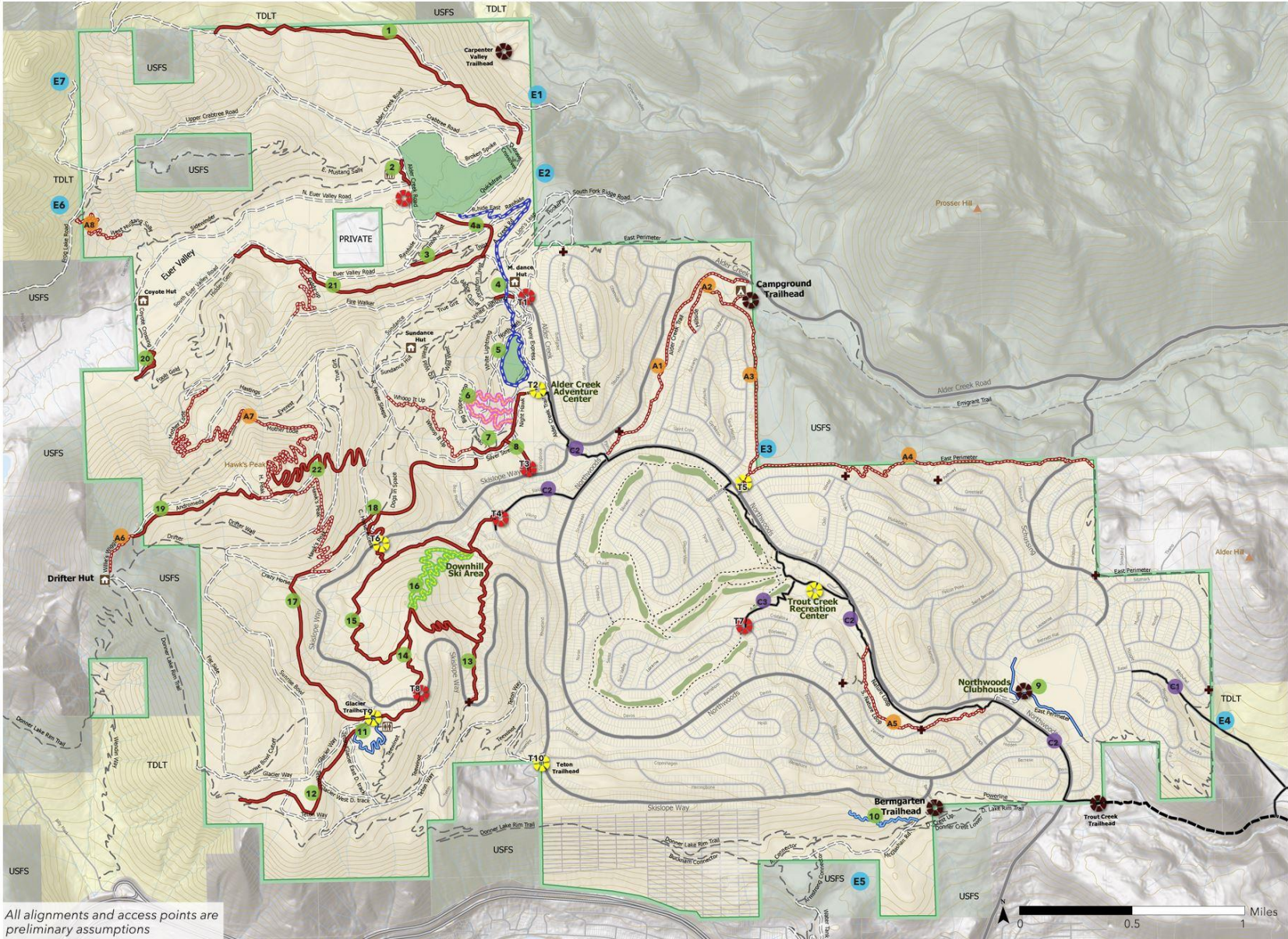
ITEM	DESCRIPTION
<b>EQUESTRIAN</b>	
New Signage	Behavioral, etiquette, wayfinding
Overnight Camping	Equestrian adventures for members/non-members combined with a catered overnight
Skills and Etiquette Camps	How to ride and how to ride around others
Stabling	Expand stabling options to grow participation and offerings- need in-depth study to review fiscal viability
Equestrian Only Network	Small equine trail network for those wanting to avoid all other users
Fenced Equestrian Zones	Consolidate stables, training, teaching areas into a fenced zone
Equestrian Events	Invite greater use patterns and possible revenue streams with equestrian events,. <a href="https://www.tahoedonner.com/events/wild-west-fest/">https://www.tahoedonner.com/events/wild-west-fest/</a>
Trail Maintenance	Equestrian community trail days to maintain hoofed trails
<b>HIKING</b>	
New Signage	Behavioral, etiquette, wayfinding
Hike to Camping	Hike adventures combined with a catered overnight stay
Hike Camps	Gear, technique, mapping and basic survival program, and hiking with other users
Guided Hikes	Weekend guided hikes to destinations
Hike Only Trails	Small selection of hike only trails for those wanting to avoid all other users
Hike/Run Events	Dirt trail hike or running events to invite greater use patterns with revenue streams. <a href="https://olympicvalleyhalf.com/">https://olympicvalleyhalf.com/</a>
Trail Maintenance	Hike community trail days to maintain hiked trails
Interpretive Hikes & Signs	Learn about the natural environment or local history on an interpretive hike with explanatory signage

## Element Matrix

ITEM	DESCRIPTION
<b>BIKING</b>	
New Signage	Behavioral, etiquette, wayfinding
Skills and Etiquette Camps	How to ride and how to ride around others
Bike Only Trails	Small number of one-directional bike trails, climb and downhill for those wanting to avoid other users
Bike Packing to Camping	Bike adventures combined with a catered overnight stay
Interpretive Signs	How to master a skill and/or master etiquette
Skills Zones	A zone to build skills in a progression, mitigating risk and focusing beginner users to a specific zone
Progression Park	The next step in learning more complex skills like cornering, flow, pump, balance and air
Pump Track	Small to medium size to attract a kid/family audience, teaching the basics of balance, stance and pump
Bike Park	Build a progression bike park and own the family segment of the market
Bike Events	Dirt trail bike events to invite greater use patterns with revenue streams. <a href="https://adventuresportswееktahoe.com/compete/lake-tahoe-mountain-bike-race/">https://adventuresportswееktahoe.com/compete/lake-tahoe-mountain-bike-race/</a>
Trail Maintenance	Bike community trail days to maintain worn bike trails
<b>XC-TOURING</b>	
Touring 101	The basic skills of ski touring, with basic snow safety
Backcountry Guiding	Guided touring experiences, include equipment, training on snow safety etc.
Backcountry to Camping	Guided experience into overnight catered camping experience
Snow safety Courses	Sanctioned AIRE courses on site.
Touring Events	Touring and Skimo race events to invite greater use patterns with revenue streams. <a href="https://www.usaskimo.org/guide-to-ski-mountaineering/">https://www.usaskimo.org/guide-to-ski-mountaineering/</a>
<b>SNOWSHOEING</b>	
Trail Signage	Designate routes with permanent (non snowpack affected) signs, easy to difficult routes
Guided Shoe Tours	Guided touring experiences, include equipment, training on snow safety etc.
Snowshoe to Camping	Guided experience into overnight catered camping experience
Snowshoe Events	Snowshoe race events to invite greater use patterns with revenue streams. <a href="https://donnerpartymountainrunners.com/snowshoe-races/">https://donnerpartymountainrunners.com/snowshoe-races/</a>



# Trail Master Plan - Compiled Map of Improvements



This map shows a compilation of the proposed improvements to the Tahoe Donner trail system. Subsequent maps show the focused improvements.

**Adaptive Management:** These recommendations represent the current needs and desires for trail improvements at Tahoe Donner, through adaptive management practices, changing use patterns, and developments will be addressed with ongoing management by Tahoe Donner staff and the TOS Committee.

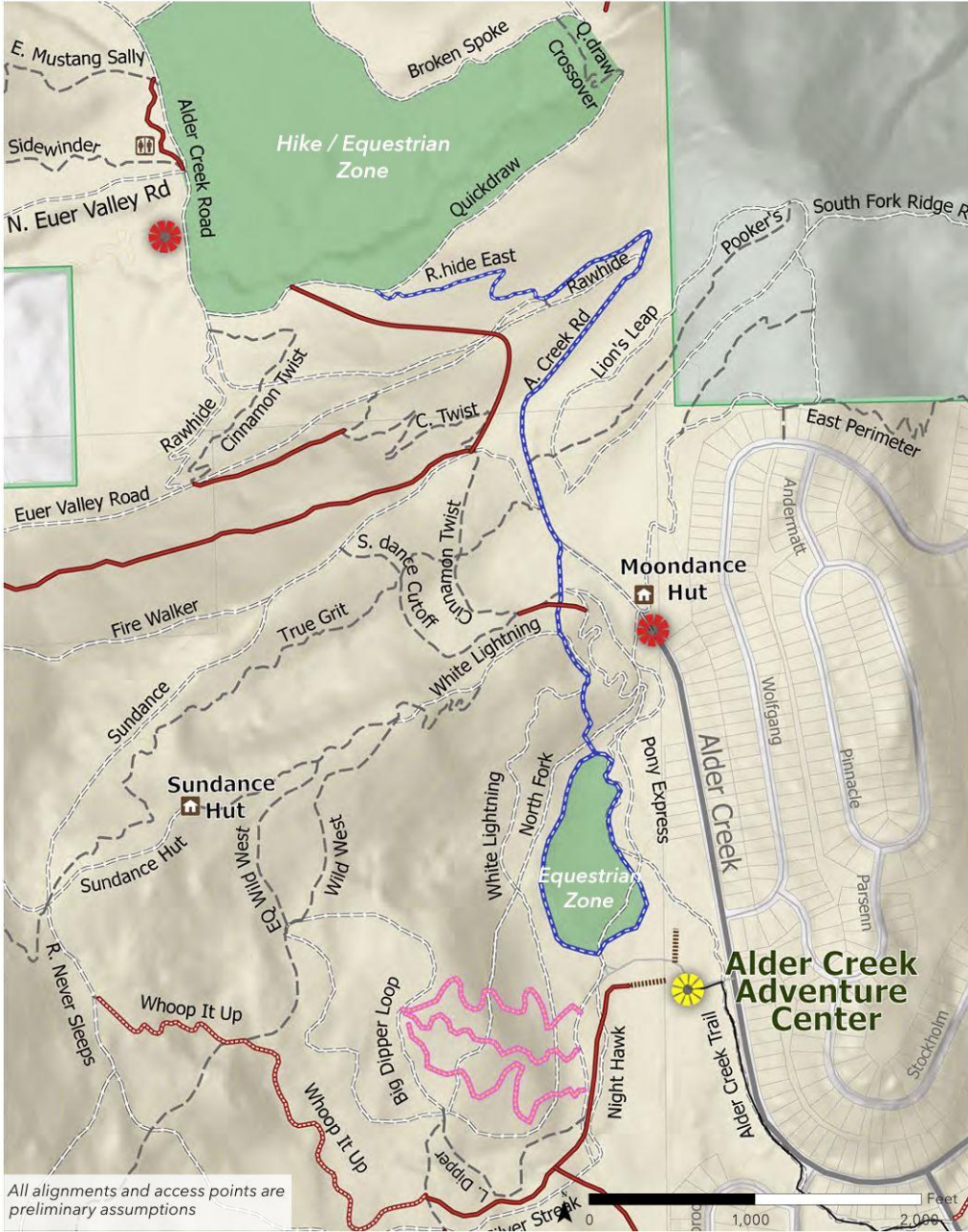
## Legend

- EXISTING**
- External Connections
  - Singletrack Trail
  - Doubletrack Trail
  - Class I Path
  - Improved Existing Trail
  - Primary Road
  - Secondary Road
  - Improved Trailhead
  - Existing Trailhead
  - Existing Neighborhood Access
- PROPOSED**
- External Trail Connections
  - Class I Paved Path
  - Multi-use Trail
  - Equestrian Trail
  - Flow Trail
  - Bike Optimized Trail
  - Inclusive Trail
  - Boardwalk
  - New Trailhead
  - Zonal Land Use





# Alder Creek and Euer Valley North



- Safety & Civility
- Popularity & Density
- Connected Network
- Zonal Land Use

By defining the **Equestrian Zone** at Alder Creek Adventure Center all trail users will be more aware of the trail use designations in that area and equestrians will have a safe trailhead within that zone. The alignment of Rawhide has been adjusted to have fewer intersections with other trails and provides a direct access route from the Equestrian Zone to Euer Valley. Once in Euer Valley a new **zone for hiking and equestrian use** will be created in the area between Quickdraw, Broken Spoke, and Alder Creek Road. This area will have a future trail connection to Carpenter Valley.

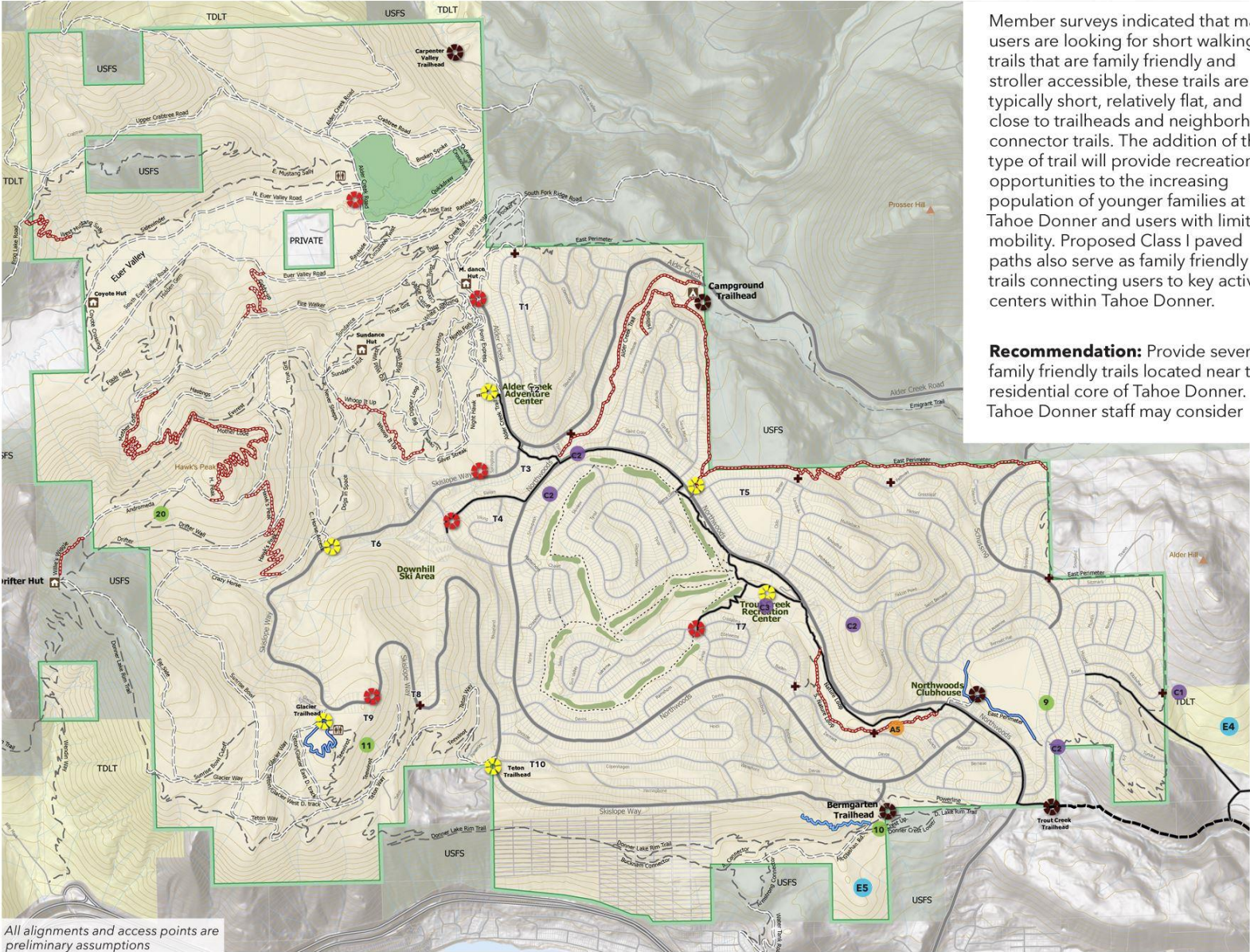
The **Family Flow Trail Zone** is located directly behind Alder Creek Adventure Center to provide families access to easy bike optimized trails. With a mix of downhill flow trails and dirt road uphill trails, families and beginner riders can easily navigate and improve their skills in a fun and safe environment. Connections from uphill surrounding trails will still be maintained outside of this zone to maintain ease of trail access from Alder Creek Adventure Center.

## Legend

- EXISTING**
- Singletrack Trail
  - === Doubletrack Trail
  - Class I Path
  - ==== Improve Existing Trail
  - Primary Road
  - Secondary Road
  - ☀ Improved Trailhead
  - ★ Existing Trailhead
- PROPOSED**
- Class I Paved Path
  - Multi-Use Trail
  - Equestrian Trail
  - Flow Trail
  - ==== Boardwalk
  - ★ New Trailhead
  - Zonal Land Use



# New Inclusive Trails



Member surveys indicated that many users are looking for short walking trails that are family friendly and stroller accessible, these trails are typically short, relatively flat, and close to trailheads and neighborhood connector trails. The addition of this type of trail will provide recreational opportunities to the increasing population of younger families at Tahoe Donner and users with limited mobility. Proposed Class I paved paths also serve as family friendly trails connecting users to key activity centers within Tahoe Donner.

**Recommendation:** Provide several family friendly trails located near the residential core of Tahoe Donner. Tahoe Donner staff may consider

offering staff led outings into Euer Valley and the Glacier Way area to provide more opportunities for limited mobility users to access more of Tahoe Donner Open Space lands.

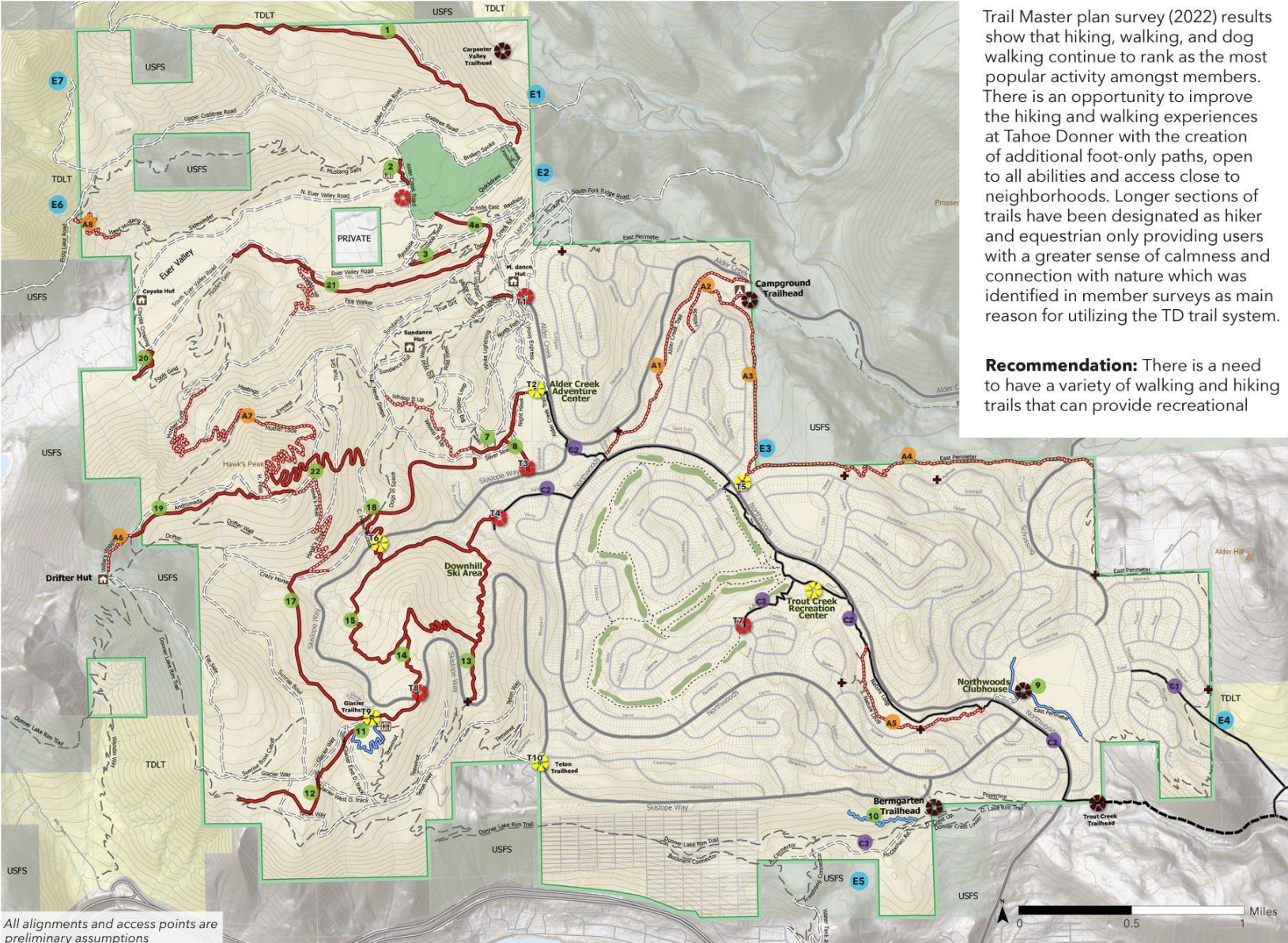
## Legend

- EXISTING**
- Singletrack Trail
  - == Doubletrack Trail
  - Class I Path
  - Improved Existing Trail
  - Primary Road
  - Secondary Road
  - Improved Trailhead
  - Existing Trailhead
  - Existing Neighborhood Access
- PROPOSED**
- Class I Paved Path
  - Multi-use Trail
  - Inclusive Trail
  - Boardwalk
  - New Trailhead
  - Zonal Land Use





# New Walking and Hiking Trails



All alignments and access points are preliminary assumptions

Trail Master plan survey (2022) results show that hiking, walking, and dog walking continue to rank as the most popular activity amongst members. There is an opportunity to improve the hiking and walking experiences at Tahoe Donner with the creation of additional foot-only paths, open to all abilities and access close to neighborhoods. Longer sections of trails have been designated as hiker and equestrian only providing users with a greater sense of calmness and connection with nature which was identified in member surveys as main reason for utilizing the TD trail system.

**Recommendation:** There is a need to have a variety of walking and hiking trails that can provide recreational

opportunities to a wide range of ages and abilities, from strollers to 20k runs. The trails identified through the planning process offer new trails for hiking and walking, These trails were designated with viewpoints, external connections, and quality of experience in mind.

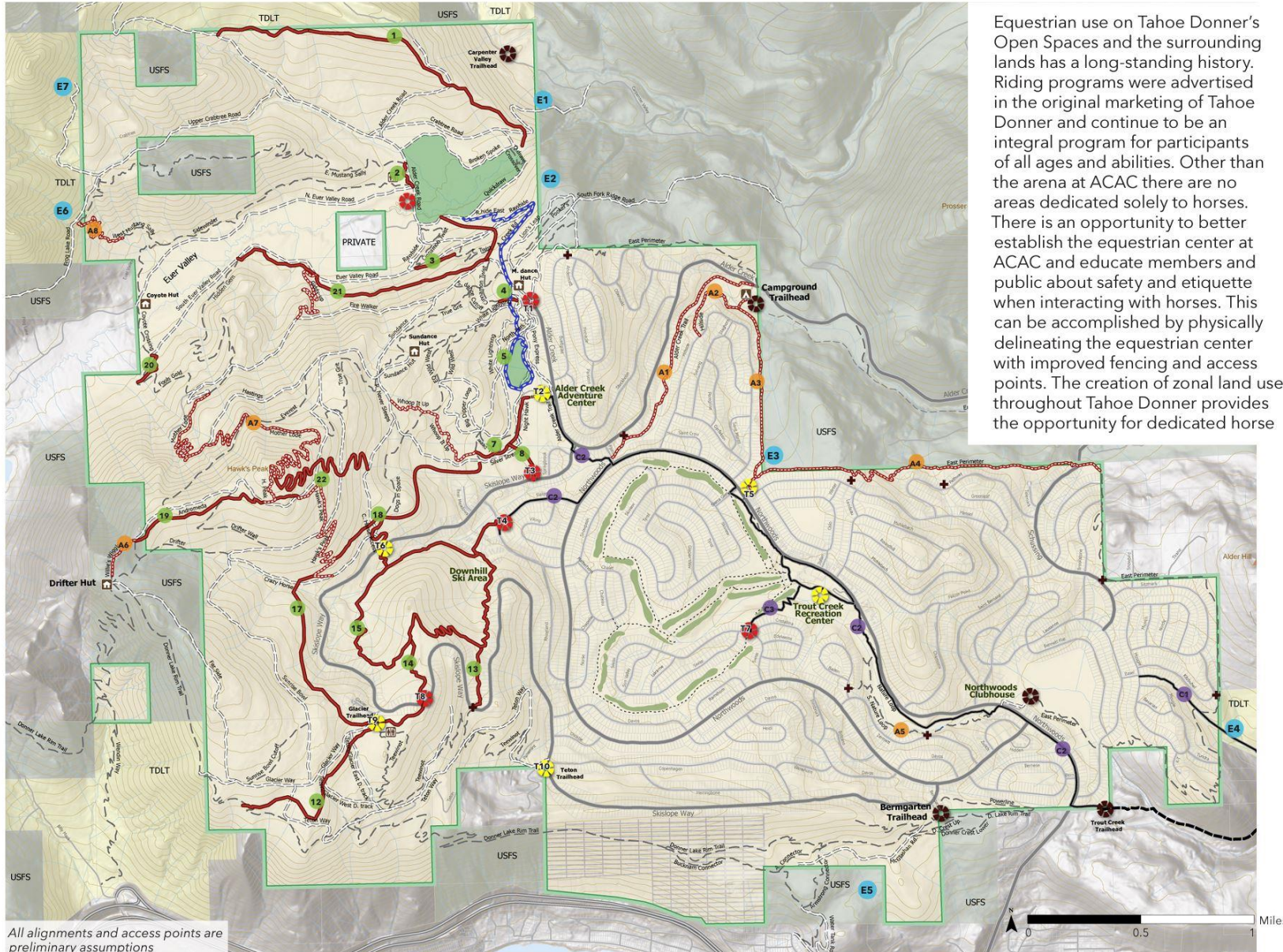
## Legend

- EXISTING**
- Singletrack Trail
  - Doubletrack Trail
  - Class I Path
  - Improved Existing Trail
  - Primary Road
  - Secondary Road
  - Improved Trailhead
  - Existing Trailhead
  - Existing Neighborhood Access
- PROPOSED**
- Class I Paved Path
  - Multi-use Trail
  - Inclusive Trail
  - Boardwalk
  - New Trailhead
  - Zonal Land Use





# New Equestrian Trails



All alignments and access points are preliminary assumptions

Equestrian use on Tahoe Donner's Open Spaces and the surrounding lands has a long-standing history. Riding programs were advertised in the original marketing of Tahoe Donner and continue to be an integral program for participants of all ages and abilities. Other than the arena at ACAC there are no areas dedicated solely to horses. There is an opportunity to better establish the equestrian center at ACAC and educate members and public about safety and etiquette when interacting with horses. This can be accomplished by physically delineating the equestrian center with improved fencing and access points. The creation of zonal land use throughout Tahoe Donner provides the opportunity for dedicated horse

and hiking areas and trails absent of mountain bikers.

**Recommendation:** Utilize the northeast corner of Euer Valley as an area with limited bike trail development. New and existing trails identified through the planning process offer equestrian opportunities that create clear trail designations connecting the equestrian center to Euer Valley.

## Legend

### EXISTING

- Singletrack Trail
- === Doubletrack Trail
- Class I Path
- Improve Existing Trail
- Primary Road
- Secondary Road
- Improved Trailhead
- Existing Trailhead
- Existing Neighborhood Access

### PROPOSED

- Class I Paved Path
- Multi-use Trail
- Equestrian-Only Trail
- Boardwalk
- New Trailhead
- Zonal Land Use





# External Connections



**EXTERNAL CONNECTIONS**

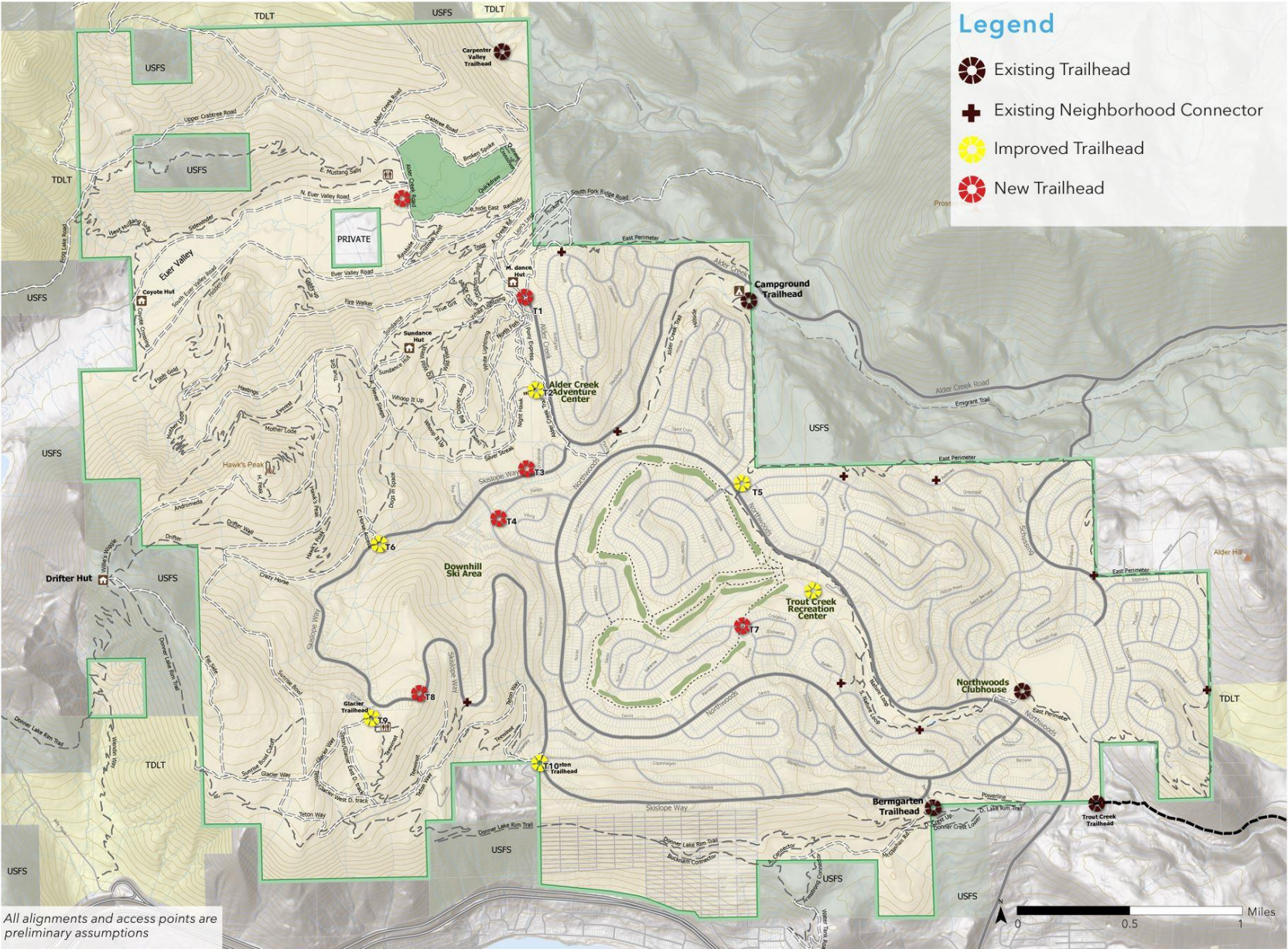
This map shows future connections to the regional trail network to and from Tahoe Donner. These regional connections can be provided by working closely with the USFS and TDLT. In some cases preliminary trail planning with the adjacent land managers has already started and a collaborative effort will help expedite the process.

- E1 Carpenter Valley Connection\***
- E2 Prosser Connection**
- E3 Emigrant Connection**
- E4 Mougles to Truckee**
- E5 Bermgarten to Armstrong**
- E6 Frog Lake Connection\***
- E7 Red Mountain Connection\***

\*Tahoe Donner will work with neighboring land owners to identify mutually beneficial trail alignments and allowable uses.



# New and Improved Trailheads



All alignments and access points are preliminary assumptions

## Legend

- Existing Trailhead
- Existing Neighborhood Connector
- Improved Trailhead
- New Trailhead

## NEW AND IMPROVED TRAILHEADS

New and existing trailheads throughout Tahoe Donner will improve user navigation and help to create more varied starting points for trail users. Expanded trailheads outside of Alder Creek Adventure Center will improve congestion and provide more access points for residents.

### T1 New Moondance Hut TH



### T2 Alder Creek Adventure Center Improvements



### T3 New Springbrook TH



### T4 New Downhill Ski Area TH



### T5 New Hansel TH



### T6 Improved Hawk's Peak TH



### T7 New Swiss Lane TH



### T8 Top Shop TH



### T9 Improved Glacier TH



### T10 Improved Teton TH







All alignments and access points are preliminary assumptions

### Mountain Biking and E-Bike Opportunities

Across the region and Tahoe Donner trail system, mountain bikers are a rapidly growing user group. The sport's popularity is evident across the entire Tahoe Donner trail system. Differing speeds between bikers, walkers and equestrians creates the highest potential for negative encounters. There is an opportunity to minimize conflicts by reorganizing use patterns and creating more predictable outcomes for all trail users. Riders can be attracted and redirected to purpose-built bike trails that offer technical and physical challenge by choice. Designation and creation of mountain bike specific trails, raises the quality of rider experiences and potentially decreases the volume of bicycle use on the broader trail system.

**Recommendation:** Bike specific trail designations should be established in areas of congestion and where terrain is likely to encourage higher speeds.

### Class I E-Bike Management

Due to their similarity, pedal assist Class I e-bikes, limited to 20 MPH are most effectively managed as mountain bikes. If negative encounters occur between Class I e-bikers and other users, the cause is most likely poor rider etiquette not related specifically to performance differences between a standard bike and Class I e-bike.

Adjoining land management agencies are taking similar approaches to managing the demand for e-bike riding opportunities. The Tahoe National Forest which surrounds much of Tahoe Donner's lands has studied e-bike

usage on its trail system since 2018. Through a formal NEPA Environmental Analysis process<sup>1</sup> found that "Class I E-bikes are similar to traditional mountain bikes with respect to a number of key characteristics. These include components, comparative speeds, relative health benefits, impacts to trail, and comparative appearance is not expected to increase conflicts among uses".

**Recommendation:** Focus management efforts on improving biking etiquette through educational signage and communication efforts that can improve positive shared experiences for all users, without diminishing riding opportunities for Class I e-bike riders.

<sup>1</sup> <https://www.fs.usda.gov/project/?project=57704&xp=overview>

### Legend

- EXISTING**
- Singletrack Trail
  - === Doubletrack Trail
  - Class I Path
  - Improved Existing Trail
  - Primary Road
  - Secondary Road
  - Improved Trailhead
  - Existing Trailhead
  - Existing Neighborhood Access
- PROPOSED**
- Class I Paved Path
  - Multi-use Trail
  - Flow Trail
  - Bike Optimized Trail
  - Boardwalk
  - New Trailhead
  - Zonal Land Use





# New Paved Class I Trails



## NEW PAVED Class I TRAILS

A new Class I paved trail is proposed from Alder Creek Adventure Center to the existing Trout Creek Trail. The trail will follow Northwoods Boulevard and the Nature Loop trail to connect to the Trout Creek trail. These Class I trails could be plowed for safe four-season access.

### C1 Mougles to Truckee



### C2 Trout Creek to ACAC and Ski Area



### C3 Recreation Center to Swiss Lane





# USFS Land Encroachment



## USFS LAND ENCROACHMENT

This map shows areas where the Tahoe Donner trail system has encroached on USFS land and needs to be corrected.

Corrective measures can include agreements with the USFS and/or trail realignments. Some of these areas have been identified for future off-site regional trail connections and can be addressed in those projects.



# New Winter Recreation Opportunities



Winters at Tahoe Donner are traditionally long and full of deep snow. Tall banks of snow throughout neighborhoods can create a sense of confinement and limit access to Open Spaces. Snowshoeing, XC skiing, and fat biking access opportunities were requested during member surveys. There are opportunities for the Tahoe Donner Trails Department to develop winter access routes over appropriate portions of the summer trail system. With consideration of topography and weather factors, there may be an opportunity to snow blow existing short portions of the paved golf course cart paths to offer off street winter walking.

**Recommendation:** Provide information to Tahoe Donner users about the opportunities for winter recreation outside of the Cross Country Center. Utilize signage that will be visible above snowpack for better trail legibility.

## Legend

- EXISTING**
- Singletrack Trail
  - Doubletrack Trail
  - Class I Path
  - Improved Existing Trail
  - Primary Road
  - Secondary Road
  - Improved Trailhead
  - Existing Trailhead
  - Existing Neighborhood Access
- PROPOSED**
- New Winter Trailhead





# NEXT STEPS





# NEXT STEPS

- Update TOS workplan to include action items from this process
- Staff continue to refine individual trail recommendations
- Consultants can provide visuals for facility trailheads, ACAC, Clubhouse, etc. if desired
- Consultants can provide potential programmatic details if desired







# RECOMMENDED ACTION

Board to review and provide comment

At a future meeting, this item will come back for formal adoption





# THANK YOU

