



FOREST HEALTH UPDATE

Member Meeting
June 25th, 2023

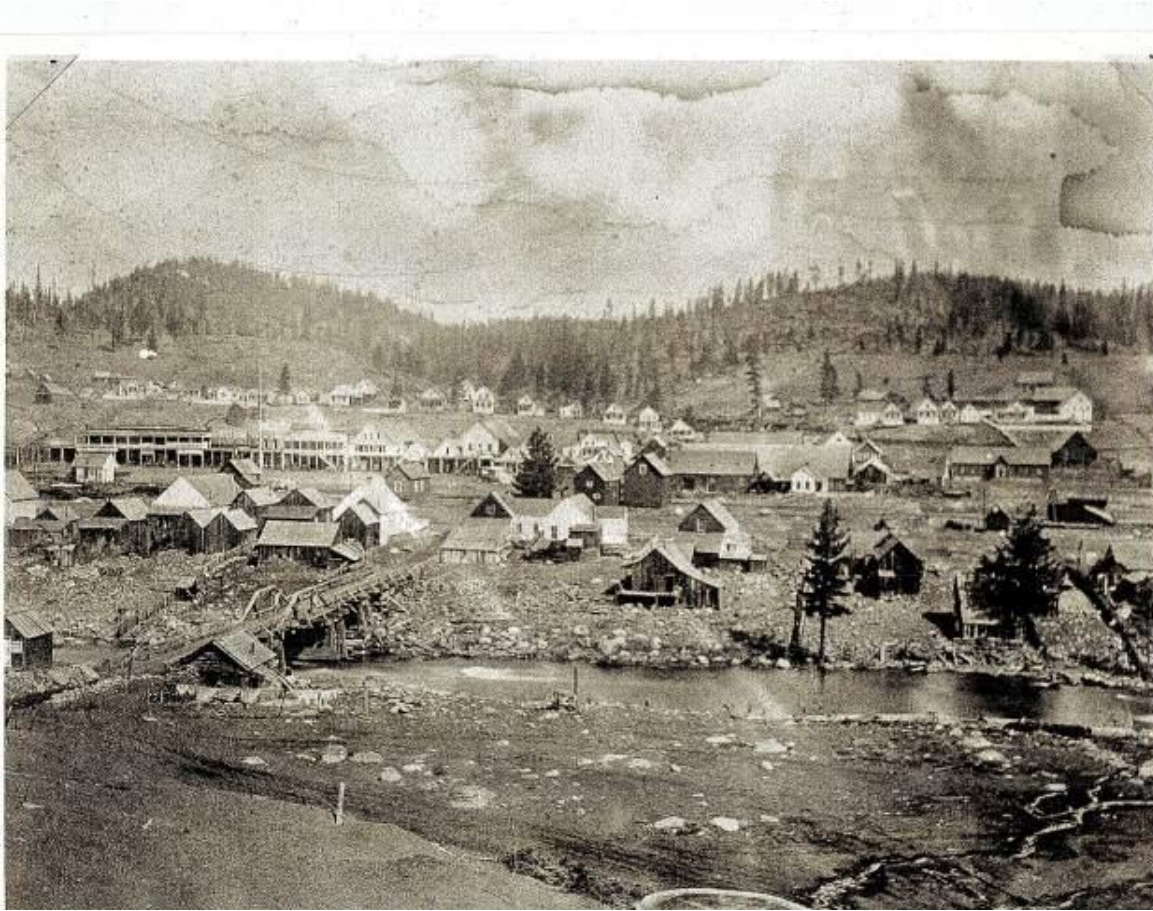


TAHOE DONNER CONSIST OF APPROXIMATELY 7000 ACRES OF FORESTED LANDSCAPE

- **MEMBERS COME TO TAHOE DONNER TO ENJOY A MOUNTAIN LIFESTYLE**
 - The high Sierra landscape offers world class scenic vistas and recreational opportunities
 - The Sierra's are the origin of 60% of California's developed water supply
 - Provides habitat for thousands of species including many on the threatened and endangered list
 - Sequesters significant amounts of carbon aiding in slowing climate change
 - Sole host to Giant Sequoia trees some of which are 3,200 hundred years old.
- **THE FOREST IS DYNAMICLY CHANGING IN FRONT OF US**
 - Approximately 30% of the forest around us are dead or dying

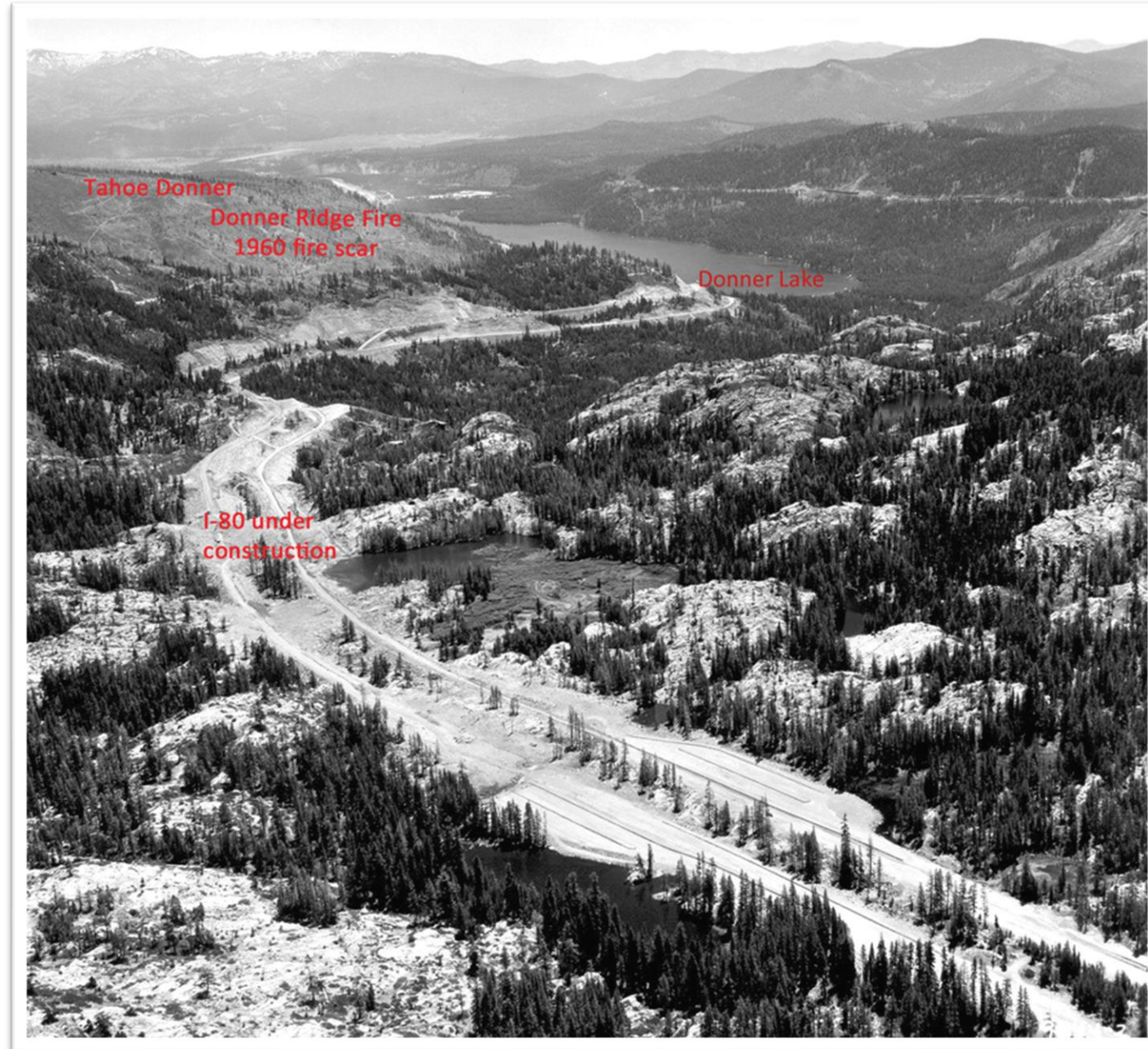


MOST OF TRUCKEE WAS CLEARCUT



50-100 YEARS

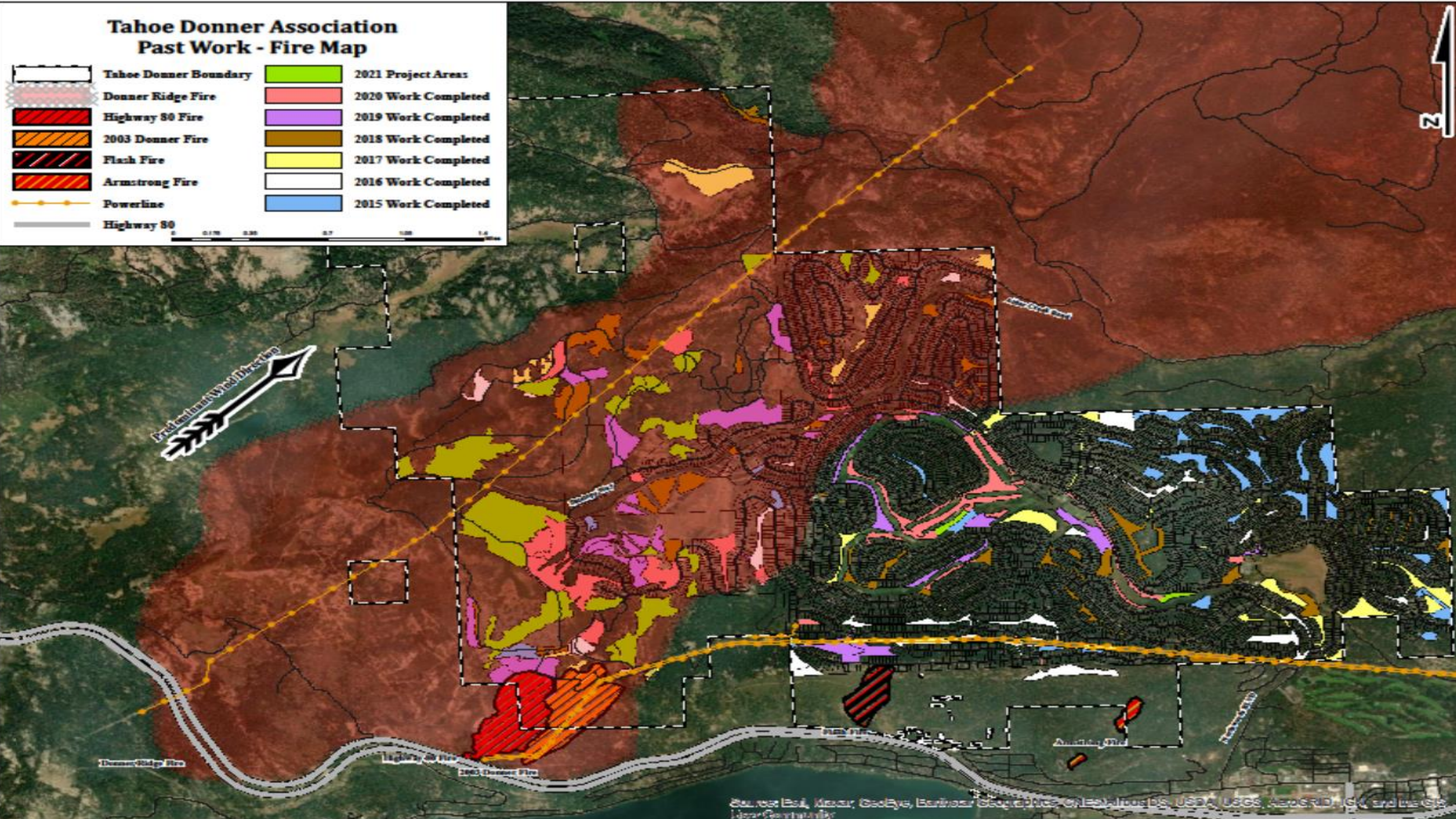
- 50-100 years after the Comstock era clearcuts, dense vegetation regrowth and 100% fire suppression created an unnatural forest stand in the high Sierra, ready to burn
- The forest was no longer resilient to high intensity fire, the 1960 Donner Ridge Fire burned from I80 to Stampede Reservoir, approximately 30 miles
- Tahoe Donner was designed on top of this fire scar



**FIRES CONTINUE TO TEST
TAHOE DONNER**



Tahoe Donner Association Past Work - Fire Map





MANAGING FOR THE NEXT 100 YEARS



NEW CHALLENGES

- Potentially 30% of trees across the high Sierra are dead or dying
- Trees are going from green to brown in a month's time.
- The forestry program is reacting as fast as possible
- Prioritizing dead tree removal in common areas near neighborhoods



THANK YOU