

BOARD UPDATE: GLACIER WAY TRAILHEAD PARKING LOT EXPANSION

November 17, 2023



BACKGROUND

WHAT IS THE PROJECT?

This project will expand the Glacier Way Trailhead parking lot to add more parking spaces and a permanent restroom facility to the site.

WHY THIS PROJECT?

- The Glacier Way Trailhead parking area is one of the most popular trailheads for both summer and winter use
- The parking lot is currently undersized
- There is a need for permanent restroom facilities in this area
- The Glacier Way Trailhead Parking Expansion Project has been studied over the last 10 years:
 - 2013 Trails Master Plan – Sized to 25 spaces
 - 2016 Tahoe Donner 5-Year Trails Implementation Plan
 - 2018-2020 Trails and Open Space Committee and Staff
 - Conducted spot counts of cars on busy days
 - Reviewed Truckee PD citations
 - Increased recommendation to 50-75 spaces
 - 2022 Trails and Open Space Master Plan



STATUS

PLANNING AND DESIGN

- TDA entered into a Professional Services Agreement with Millennium Planning & Engineering
- Research, survey, and aerial mapping are complete
- Biological Inventory and Cultural Assessment studies completed for CEQA, if needed
- Perc and mantle testing complete for septic design
- An initial conceptual plan is developed

STAKEHOLDER OUTREACH

- Notification letter sent to all neighbors within 1,000 ft + additional Skislope Way neighbors
- Trails and Open Space Committee meeting Nov. 1
- Onsite meeting Nov. 1
- Virtual information session Nov. 2
- Sent recap of meetings and feedback to all neighbors, and requested all comments to be received by Nov. 17



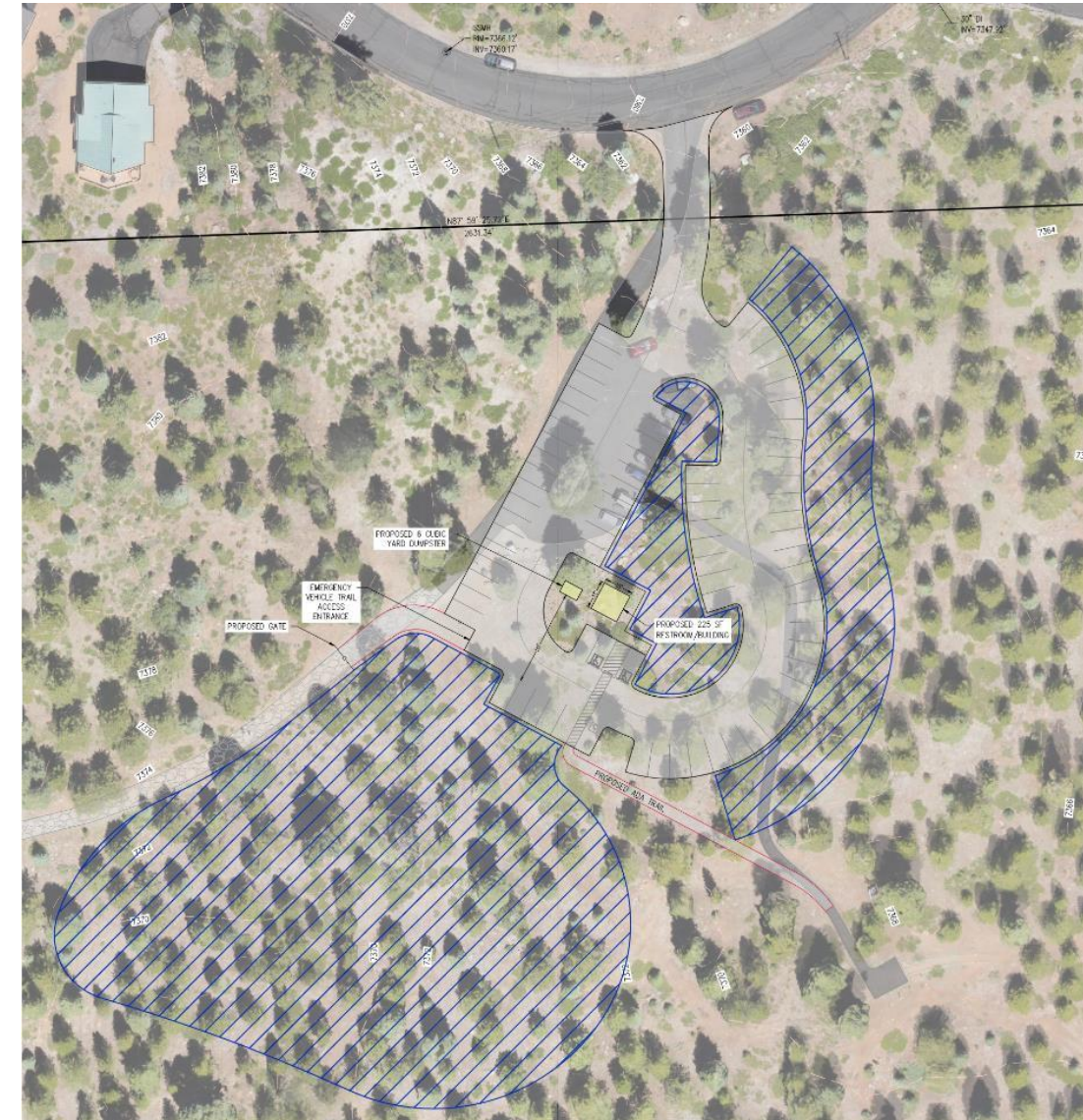
CONCEPTUAL DESIGN HIGHLIGHTS

EXPANDED PARKING LOT:

- Thoughtful expansion to minimize impact to neighbors
- Driveway and size designed for fire lane & snow removal
- Provides for snow storage - blue hatched areas
- Can accommodate up to 76 vehicles with ADA parking
- Access to future approx. half-mile ADA loop trail
- Accommodates 6-yard bear proof “mailbox” style dumpster
 - Allows for snow removal and TTSD pick-up
 - Prevents “dumping”

PERMANENT YEAR-ROUND RESTROOM:

- Auto-locking doors on timer to prevent overnight use
- ADA compliant
- Drinking fountain/bottle filler
- Maintenance storage
- Septic system



PLEASE NOTE: The Glacier Way Trailhead Parking Lot Expansion Project is in development by Tahoe Donner Association. The information provided is preliminary and subject to change. Drawings and renderings herein are for conveying Tahoe Donner Association's vision of future projects. No warranties, expressed or implied, are made.



TAHOE DONNER™

NEXT STEPS

DESIGN

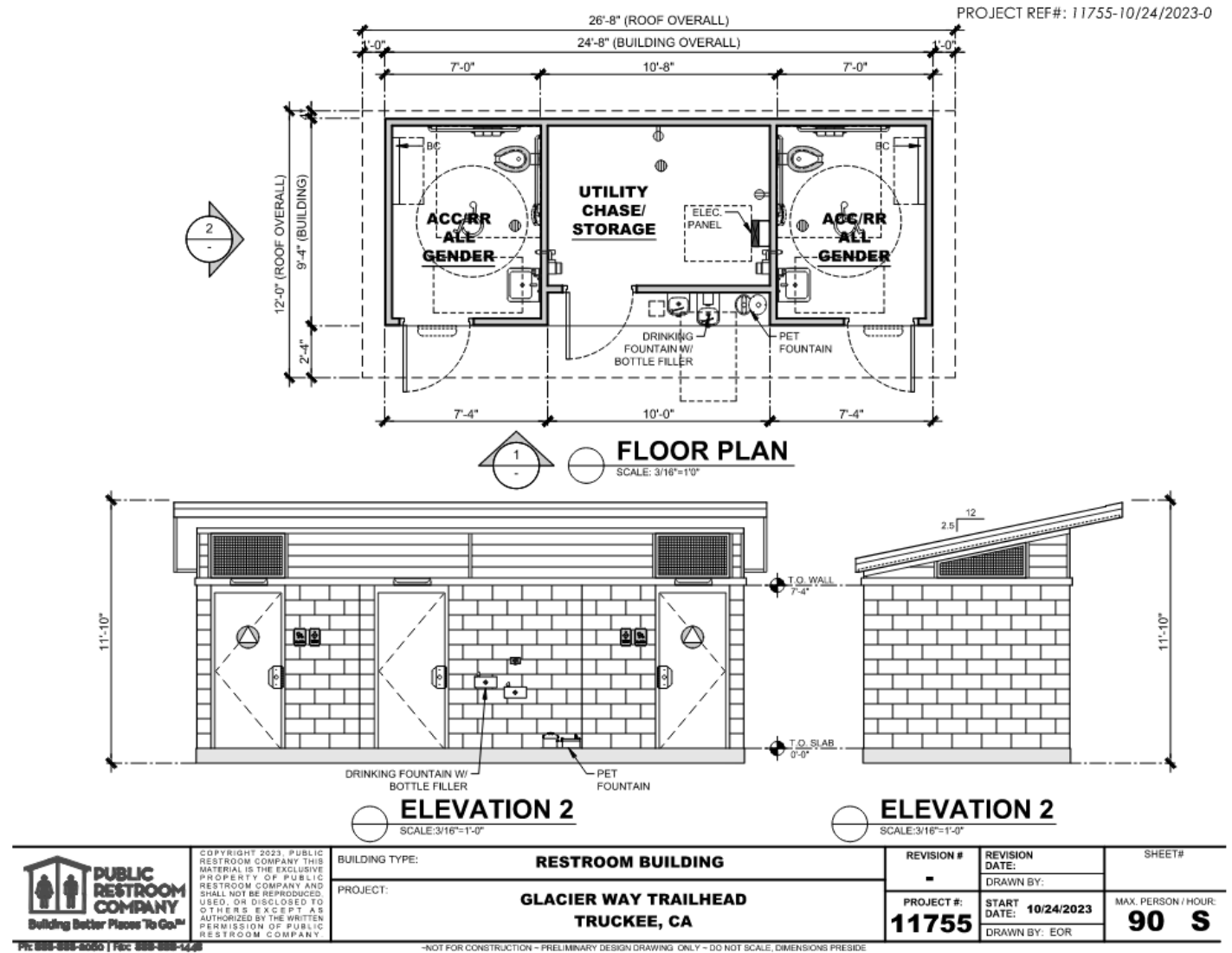
- Schematic Design to commence mid-November, incorporating stakeholder feedback:
 - Potentially reduce the number of spaces
 - Soften design for a more organic look and feel
 - Refine restroom design

PLANNING / PERMITTING

- Permit submittal anticipated in early 2024

CONSTRUCTION

- Tentatively planning to construct all improvements in 2024
- Anticipate a 4-8 week construction schedule



PLEASE NOTE: The Glacier Way Trailhead Parking Lot Expansion Project is in development by Tahoe Donner Association. The information provided is preliminary and subject to change. Drawings and renderings herein are for conveying Tahoe Donner Association's vision of future projects. No warranties, expressed or implied, are made.

THANK YOU