

# GLACIER WAY TRAILHEAD PARKING LOT EXPANSION NEIGHBOR UPDATE

January 24, 2024



# 2023/24 STAKEHOLDER OUTREACH

- Nov. 1 on-site and Nov. 2 virtual meetings with neighbors and TOS
- Met additional neighbors on-site on Nov. 12
- Reviewed conceptual design at Nov. 17 Regular Board Meeting

## SUMMARY OF FEEDBACK

- Confirmed street parking is an ongoing problem
- Need better snow removal in the parking lot
- Consistent feedback – Appropriate size 30-40+ spaces
- Concerns with dumpster visual aesthetic and potential for “dumping”
- Concern with restroom visual aesthetic, the potential for overnight use and maintenance
- Parking lot geometry should be more “organic”
- Provide wayfinding signage
- Requested more “no parking” signage on roads and enforcement

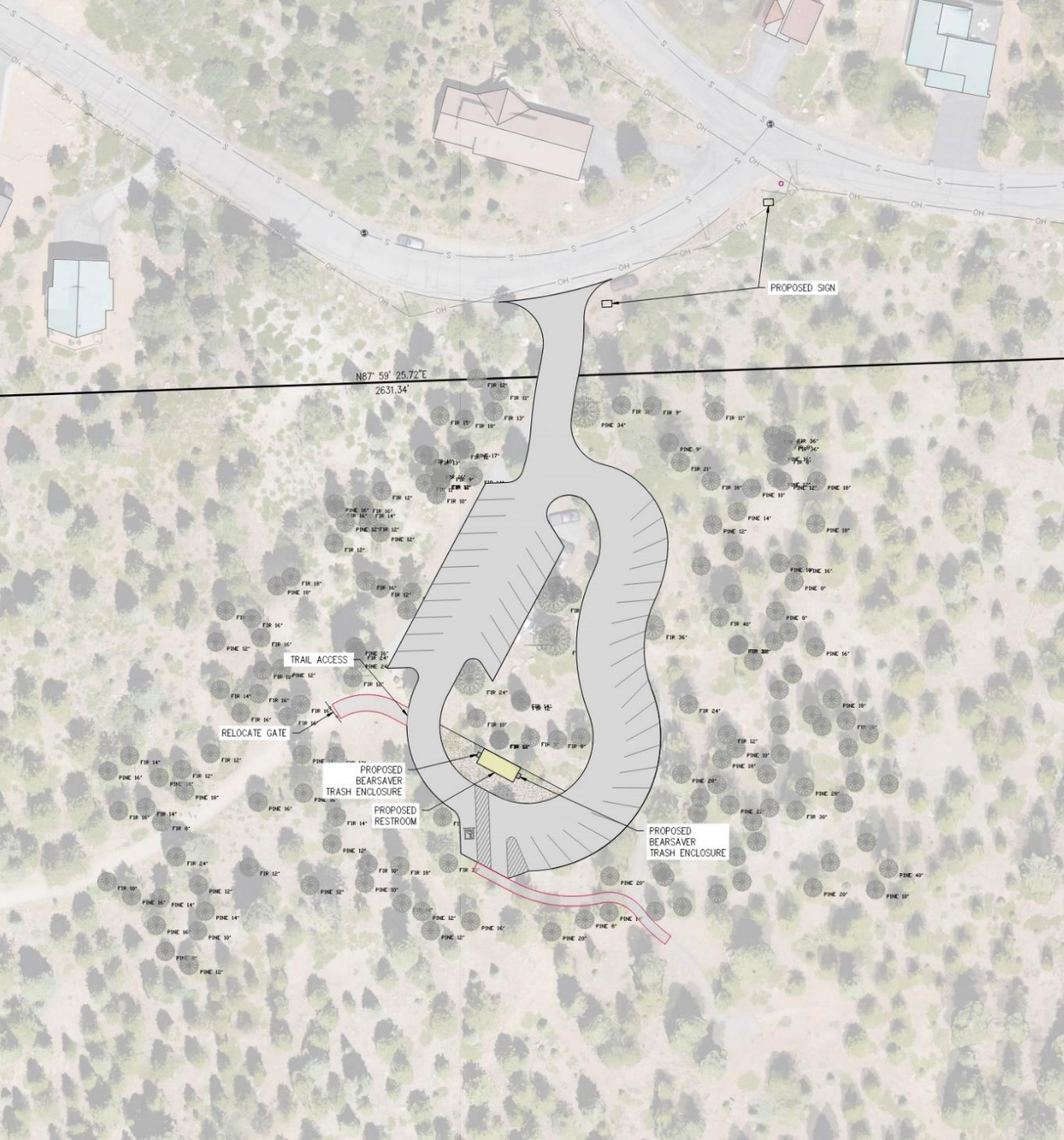




# DESIGN PROGRESS

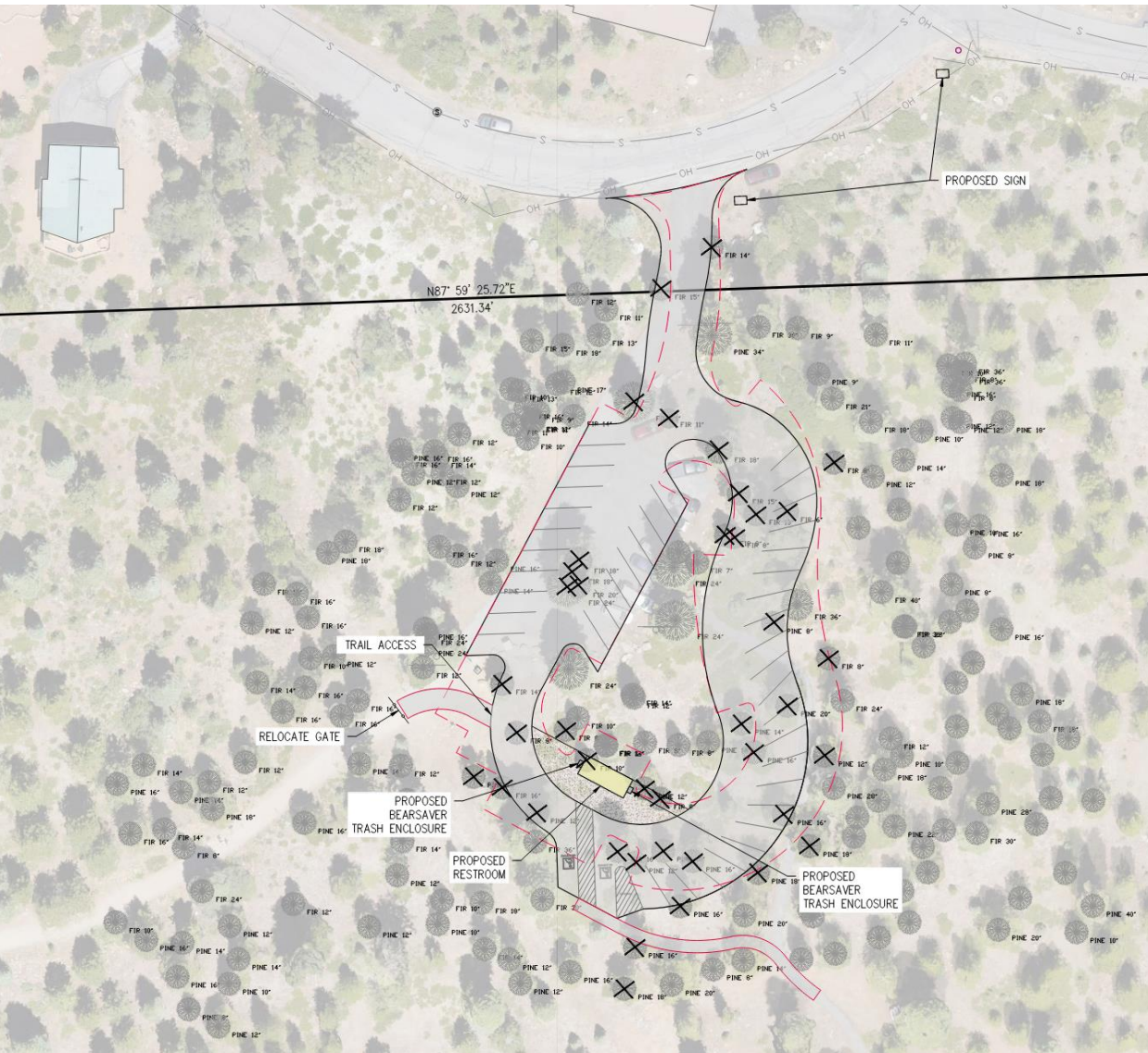
## PLANNING AND DESIGN

- Staff worked with the consultant to revise the plan based on feedback received
- Reviewed multiple iterations of revised plans and provided feedback
- Walked the site with snow removal crew, noted trees for removal for push zones, and provided additional information to the consultant on snow removal logistics
- Researched options for waste disposal with TTSD
- Schematic plan has been developed





# SCHEMATIC DESIGN



## SUMMARY OF CHANGES

- Wayfinding signage added, to be located near the intersection of Skislope and Glacier Way
- 43 total parking spaces including two ADA spaces
- Parking lot geometry is “organic” in shape
- Modified footprint to preserve large trees and screen expansion from neighbor properties
- Adjustments to improve snow removal capability and additional small trees marked for removal for push zones
- Located ADA spaces closer to proposed ADA trailhead
- Shifting of restroom to the south for more tree screening and reduction of concrete around restroom area
- Replacement of 6-yard dumpster with two double bin trash/recycling enclosures



PLEASE NOTE: The Glacier Way Trailhead Parking Lot Expansion Project is in development by Tahoe Donner Association. The information provided is preliminary and subject to change. Drawings and renderings herein are for conveying Tahoe Donner Association's vision of future projects. No warranties, expressed or implied, are made.

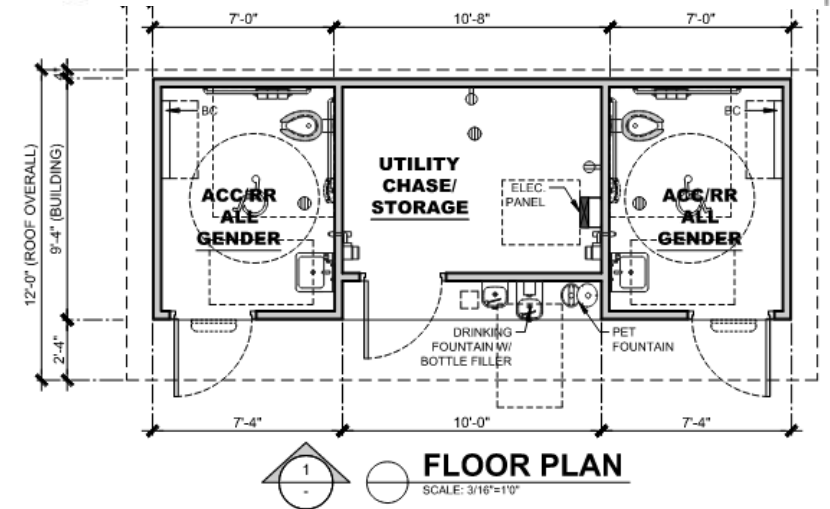


**TAHOE DONNER**

# RESTROOM FACILITY

Staff still contends that a restroom is environmentally responsible:

- Restroom shifted to the south for added tree screening from neighbor views
- Two stalls is appropriate for number of parking spaces - One stall per 35 persons
- Working with Nevada County Department of Environmental Health (NCDEH) to evaluate plumbed versus vault options





# STREET PARKING ON GLACIER WAY & SKISLOPE

TDA staff working with Truckee Police Dept. and Town of Truckee Engineering and Public Works:

- Requested enforcement from Truckee Police Dept.
  - Focusing on education and having a strong presence in the area for winter 2023-2024
  - Increasing monitoring - Community Service Officers will have a daily presence in the area
- Requested additional signage from Public Works
  - Typically only have the Ordinance Section 10.17.030 (Snow Removal Ordinance) signage posted at entrances to subdivisions, although they acknowledged that there is additional signage around the Downhill Ski Area
  - Fine schedule changes, cannot include in signage
- Both departments are aware of the parking lot expansion project and believe this will alleviate the overflow of cars parking on the street
  - If there are continued issues after parking lot expansion, they will re-evaluate if signage is needed



## PLEASE NOTE:

- Tahoe Donner Association does not have jurisdiction
- Call the **Truckee Police Department** when you see vehicles parked on streets



**TAHOE DONNER™**





# NEXT STEPS

## DESIGN

- Design Development commencing next week

## PLANNING / PERMITTING

- Permit submittal anticipated by spring 2024

## CONSTRUCTION

- Tentatively planning to construct all improvements in fall 2024
- Anticipate a 4-8 week construction schedule

# THANK YOU

