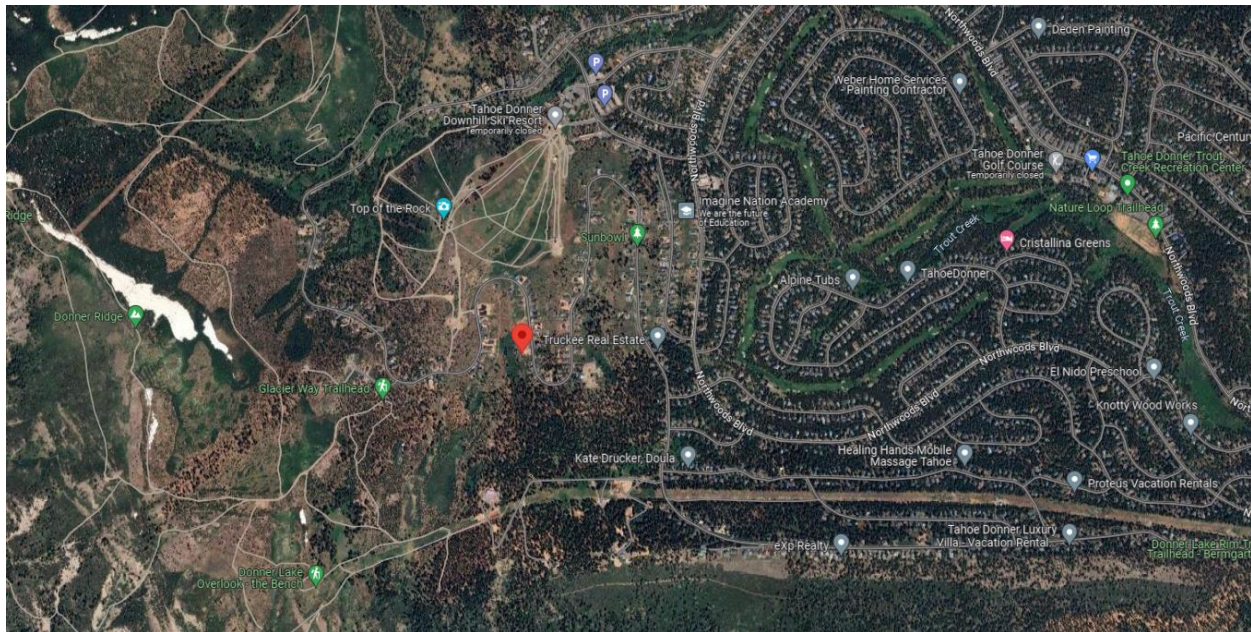


LOCATION, PHOTOS AND PROJECT PLANS





TAHOE  
REALTY  
Serving Quality  
Clients Since 1982  
CHASE  
REALTY GROUP

05/31/2024 14:36



05/31/2024 14:38



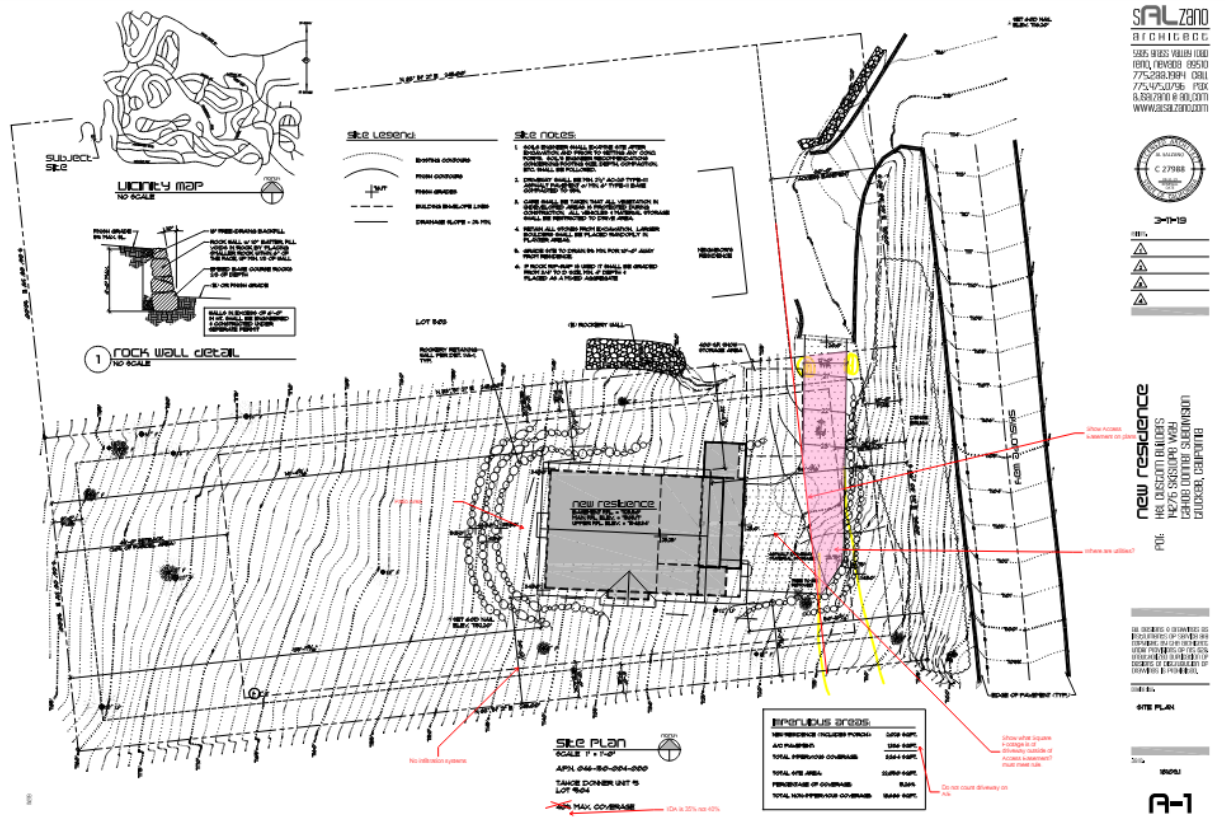
**SALZANO**  
**ARCHITECTS**  
 585 4835 VALLEY ROAD  
 1800, FRENCH CREEK  
 775-228-2334 FAX  
 775-442-2036 FAX  
 8.839.7810 @ SALZANO  
 WWW.SALZANO.COM



**new residence**  
 THE DISCOUNT BUILDERS  
 10000 S. SANDY VALLEY ROAD  
 LAS VEGAS, NEVADA 89137  
 PROJECT NO. 2010-001

THE ARCHITECT IS NOT RESPONSIBLE FOR THE ACCURACY OF THE INFORMATION PROVIDED BY OTHER PROFESSIONALS OR FOR THE CONSTRUCTION OF THE PROJECT.

**new residence**  
 THE DISCOUNT BUILDERS  
 10000 S. SANDY VALLEY ROAD  
 LAS VEGAS, NEVADA 89137  
 PROJECT NO. 2010-001



- Site Legend**
- EXISTING CONTOUR
  - FINISH GROUND
  - BUILDING ENVELOPE LINE
  - DRAINAGE SLOPE 1 IN 1%

- Site Notes**
1. ALL EXISTING WALLS, FENCES AND UTILITIES TO REMAIN TO BE SHOWN ON THIS PLAN. ALL NEW CONSTRUCTION SHALL BE SHOWN ON THIS PLAN.
  2. EXISTING WALLS, FENCES AND UTILITIES TO BE REMOVED SHALL BE SHOWN ON THIS PLAN.
  3. ALL NEW CONSTRUCTION SHALL BE SHOWN ON THIS PLAN.
  4. ALL NEW CONSTRUCTION SHALL BE SHOWN ON THIS PLAN.
  5. ALL NEW CONSTRUCTION SHALL BE SHOWN ON THIS PLAN.
  6. ALL NEW CONSTRUCTION SHALL BE SHOWN ON THIS PLAN.
  7. ALL NEW CONSTRUCTION SHALL BE SHOWN ON THIS PLAN.
  8. ALL NEW CONSTRUCTION SHALL BE SHOWN ON THIS PLAN.
  9. ALL NEW CONSTRUCTION SHALL BE SHOWN ON THIS PLAN.
  10. ALL NEW CONSTRUCTION SHALL BE SHOWN ON THIS PLAN.

**1 ROCK WALL DETAIL**  
 NO SCALE

**PERVIOUS GRADE**

PERVIOUS GRADE	AREA SQ. FT.
PERVIOUS GRADE	1000
TOTAL PERVIOUS GRADE	1000
TOTAL SITE AREA	1000
PERCENTAGE OF COVERAGE	100%
TOTAL NON-PERVIOUS GRADE	0

**Site Plan**  
 SCALE: 1" = 10'-0"  
 APPL. 046-80-004-000  
 TAKE DOWN UNIT IS LOT 804  
 40% MAX. COVERAGE

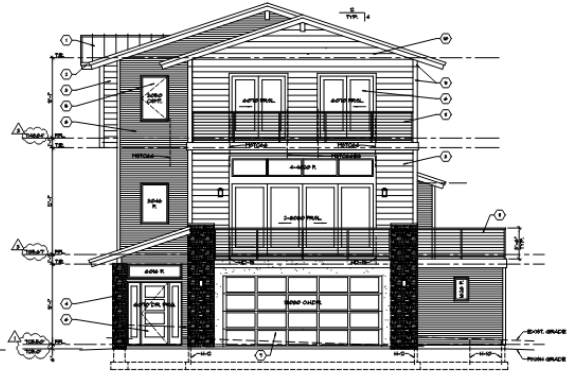
**new residence**  
 THE DISCOUNT BUILDERS  
 10000 S. SANDY VALLEY ROAD  
 LAS VEGAS, NEVADA 89137  
 PROJECT NO. 2010-001



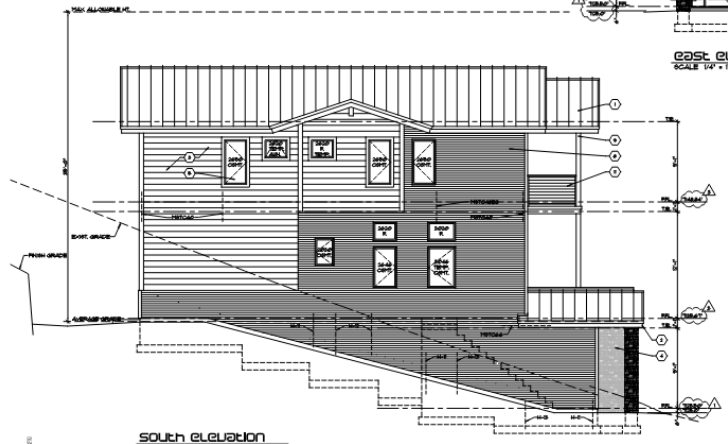
**new residence**  
 THE CUSHION BUILDING  
 16275 SKISLOPP WAY  
 CARMEL, CALIFORNIA 95008  
 PROJECT NO. 16275

DATE: 08/14/14  
 DRAWING NO. 16275-01  
 SHEET NO. 16275-01-01

THE USER IS RESPONSIBLE FOR OBTAINING ALL NECESSARY PERMITS AND REGULATORY AGENCIES. THE USER SHALL BE RESPONSIBLE FOR OBTAINING ALL NECESSARY PERMITS AND REGULATORY AGENCIES. THE USER SHALL BE RESPONSIBLE FOR OBTAINING ALL NECESSARY PERMITS AND REGULATORY AGENCIES.



**East Elevation**  
 SCALE 1/4" = 1'-0"



**South Elevation**  
 SCALE 1/4" = 1'-0"

- ELEVATION NOTES & EXTERIOR COLORS:**
1. EXTERIOR WALLS: BRICK, COLOR: DARK BRICK (16275-01-01)
  2. GARAGE DOOR: BRICK, COLOR: DARK BRICK (16275-01-01)
  3. BALCONY FLOOR: POLISHED CONCRETE, COLOR: MATCH GARAGE DOOR
  4. BALCONY RAILING: STAINLESS STEEL, COLOR: MATCH GARAGE DOOR
  5. BALCONY FENCE: STAINLESS STEEL, COLOR: MATCH GARAGE DOOR
  6. BALCONY FLOOR: POLISHED CONCRETE, COLOR: MATCH GARAGE DOOR
  7. BALCONY RAILING: STAINLESS STEEL, COLOR: MATCH GARAGE DOOR
  8. BALCONY FENCE: STAINLESS STEEL, COLOR: MATCH GARAGE DOOR
  9. BALCONY FLOOR: POLISHED CONCRETE, COLOR: MATCH GARAGE DOOR
  10. BALCONY RAILING: STAINLESS STEEL, COLOR: MATCH GARAGE DOOR
  11. BALCONY FENCE: STAINLESS STEEL, COLOR: MATCH GARAGE DOOR
  12. BALCONY FLOOR: POLISHED CONCRETE, COLOR: MATCH GARAGE DOOR
  13. BALCONY RAILING: STAINLESS STEEL, COLOR: MATCH GARAGE DOOR
  14. BALCONY FENCE: STAINLESS STEEL, COLOR: MATCH GARAGE DOOR
  15. BALCONY FLOOR: POLISHED CONCRETE, COLOR: MATCH GARAGE DOOR
  16. BALCONY RAILING: STAINLESS STEEL, COLOR: MATCH GARAGE DOOR
  17. BALCONY FENCE: STAINLESS STEEL, COLOR: MATCH GARAGE DOOR
  18. BALCONY FLOOR: POLISHED CONCRETE, COLOR: MATCH GARAGE DOOR
  19. BALCONY RAILING: STAINLESS STEEL, COLOR: MATCH GARAGE DOOR
  20. BALCONY FENCE: STAINLESS STEEL, COLOR: MATCH GARAGE DOOR

- SILICO APPLICATION NOTES:**
1. APPLY TO ALL EXTERIOR SURFACES TO PROTECT FROM WATER DAMAGE.
  2. APPLY TO ALL EXTERIOR SURFACES TO PROTECT FROM WATER DAMAGE.
  3. APPLY TO ALL EXTERIOR SURFACES TO PROTECT FROM WATER DAMAGE.
  4. APPLY TO ALL EXTERIOR SURFACES TO PROTECT FROM WATER DAMAGE.
  5. APPLY TO ALL EXTERIOR SURFACES TO PROTECT FROM WATER DAMAGE.
  6. APPLY TO ALL EXTERIOR SURFACES TO PROTECT FROM WATER DAMAGE.
  7. APPLY TO ALL EXTERIOR SURFACES TO PROTECT FROM WATER DAMAGE.
  8. APPLY TO ALL EXTERIOR SURFACES TO PROTECT FROM WATER DAMAGE.
  9. APPLY TO ALL EXTERIOR SURFACES TO PROTECT FROM WATER DAMAGE.
  10. APPLY TO ALL EXTERIOR SURFACES TO PROTECT FROM WATER DAMAGE.
  11. APPLY TO ALL EXTERIOR SURFACES TO PROTECT FROM WATER DAMAGE.
  12. APPLY TO ALL EXTERIOR SURFACES TO PROTECT FROM WATER DAMAGE.
  13. APPLY TO ALL EXTERIOR SURFACES TO PROTECT FROM WATER DAMAGE.
  14. APPLY TO ALL EXTERIOR SURFACES TO PROTECT FROM WATER DAMAGE.
  15. APPLY TO ALL EXTERIOR SURFACES TO PROTECT FROM WATER DAMAGE.
  16. APPLY TO ALL EXTERIOR SURFACES TO PROTECT FROM WATER DAMAGE.
  17. APPLY TO ALL EXTERIOR SURFACES TO PROTECT FROM WATER DAMAGE.
  18. APPLY TO ALL EXTERIOR SURFACES TO PROTECT FROM WATER DAMAGE.
  19. APPLY TO ALL EXTERIOR SURFACES TO PROTECT FROM WATER DAMAGE.
  20. APPLY TO ALL EXTERIOR SURFACES TO PROTECT FROM WATER DAMAGE.



1	1/4" = 1'-0"
2	1/8" = 1'-0"
3	1/16" = 1'-0"
4	1/32" = 1'-0"
5	1/64" = 1'-0"
6	1/128" = 1'-0"
7	1/256" = 1'-0"
8	1/512" = 1'-0"
9	1/1024" = 1'-0"
10	1/2048" = 1'-0"
11	1/4096" = 1'-0"
12	1/8192" = 1'-0"
13	1/16384" = 1'-0"
14	1/32768" = 1'-0"
15	1/65536" = 1'-0"
16	1/131072" = 1'-0"
17	1/262144" = 1'-0"
18	1/524288" = 1'-0"
19	1/1048576" = 1'-0"
20	1/2097152" = 1'-0"
21	1/4194304" = 1'-0"
22	1/8388608" = 1'-0"
23	1/16777216" = 1'-0"
24	1/33554432" = 1'-0"
25	1/67108864" = 1'-0"
26	1/134217728" = 1'-0"
27	1/268435456" = 1'-0"
28	1/536870912" = 1'-0"
29	1/1073741824" = 1'-0"
30	1/2147483648" = 1'-0"

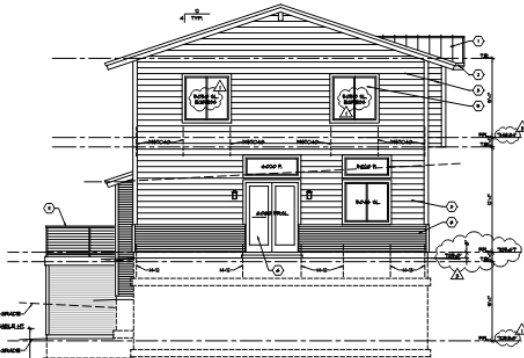
**new residence**  
 14275 SKISQUAP WAY  
 CARBOR, CALIFORNIA

ALL DIMENSIONS SHOWN ON THIS DRAWING ARE TO FACE UNLESS OTHERWISE NOTED. DIMENSIONS TO FACE SHALL BE USED FOR THE PURPOSES OF CONSTRUCTION. DIMENSIONS TO CENTER SHALL BE USED FOR THE PURPOSES OF CONSTRUCTION.

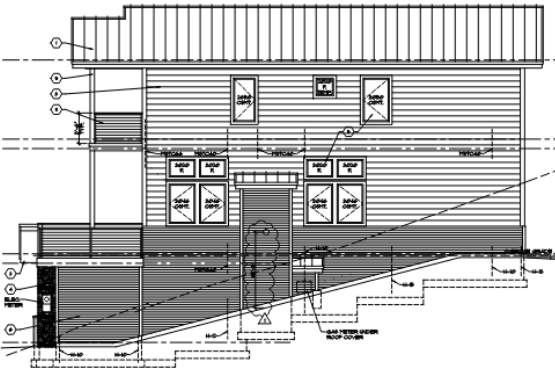
**SECTION ELEVATIONS**

1/16" = 1'-0"

**A-B**



**WEST ELEVATION**  
 SCALE 1/4" = 1'-0"



**north elevation**  
 SCALE 1/4" = 1'-0"

**ELEVATION NOTES & COLOR CODES**

- 1 BRICK FRONT PORCH FLOOR COLOR: DARK BRICK (20)
- 2 BRICK FRONT PORCH WALLS COLOR: DARK BRICK (20)
- 3 BRICK FRONT PORCH ROOF COLOR: DARK BRICK (20)
- 4 BRICK FRONT PORCH ROOF COLOR: DARK BRICK (20)
- 5 BRICK FRONT PORCH ROOF COLOR: DARK BRICK (20)
- 6 BRICK FRONT PORCH ROOF COLOR: DARK BRICK (20)
- 7 BRICK FRONT PORCH ROOF COLOR: DARK BRICK (20)
- 8 BRICK FRONT PORCH ROOF COLOR: DARK BRICK (20)
- 9 BRICK FRONT PORCH ROOF COLOR: DARK BRICK (20)
- 10 BRICK FRONT PORCH ROOF COLOR: DARK BRICK (20)
- 11 BRICK FRONT PORCH ROOF COLOR: DARK BRICK (20)
- 12 BRICK FRONT PORCH ROOF COLOR: DARK BRICK (20)
- 13 BRICK FRONT PORCH ROOF COLOR: DARK BRICK (20)
- 14 BRICK FRONT PORCH ROOF COLOR: DARK BRICK (20)
- 15 BRICK FRONT PORCH ROOF COLOR: DARK BRICK (20)
- 16 BRICK FRONT PORCH ROOF COLOR: DARK BRICK (20)
- 17 BRICK FRONT PORCH ROOF COLOR: DARK BRICK (20)
- 18 BRICK FRONT PORCH ROOF COLOR: DARK BRICK (20)
- 19 BRICK FRONT PORCH ROOF COLOR: DARK BRICK (20)
- 20 BRICK FRONT PORCH ROOF COLOR: DARK BRICK (20)
- 21 BRICK FRONT PORCH ROOF COLOR: DARK BRICK (20)
- 22 BRICK FRONT PORCH ROOF COLOR: DARK BRICK (20)
- 23 BRICK FRONT PORCH ROOF COLOR: DARK BRICK (20)
- 24 BRICK FRONT PORCH ROOF COLOR: DARK BRICK (20)
- 25 BRICK FRONT PORCH ROOF COLOR: DARK BRICK (20)
- 26 BRICK FRONT PORCH ROOF COLOR: DARK BRICK (20)
- 27 BRICK FRONT PORCH ROOF COLOR: DARK BRICK (20)
- 28 BRICK FRONT PORCH ROOF COLOR: DARK BRICK (20)
- 29 BRICK FRONT PORCH ROOF COLOR: DARK BRICK (20)
- 30 BRICK FRONT PORCH ROOF COLOR: DARK BRICK (20)

**SUCCO APPLICATION NOTES**

- 1 APPLY SUCCO TO ALL EXTERIOR WALLS
- 2 APPLY SUCCO TO ALL EXTERIOR ROOFS
- 3 APPLY SUCCO TO ALL EXTERIOR FLOORS
- 4 APPLY SUCCO TO ALL EXTERIOR CEILING
- 5 APPLY SUCCO TO ALL EXTERIOR TRIM
- 6 APPLY SUCCO TO ALL EXTERIOR DOORS
- 7 APPLY SUCCO TO ALL EXTERIOR WINDOWS
- 8 APPLY SUCCO TO ALL EXTERIOR PORCHES
- 9 APPLY SUCCO TO ALL EXTERIOR PATIOS
- 10 APPLY SUCCO TO ALL EXTERIOR TERRACES
- 11 APPLY SUCCO TO ALL EXTERIOR BALCONIES
- 12 APPLY SUCCO TO ALL EXTERIOR STAIRS
- 13 APPLY SUCCO TO ALL EXTERIOR RAMP
- 14 APPLY SUCCO TO ALL EXTERIOR DRIVEWAYS
- 15 APPLY SUCCO TO ALL EXTERIOR GARAGES
- 16 APPLY SUCCO TO ALL EXTERIOR PORCHES
- 17 APPLY SUCCO TO ALL EXTERIOR PATIOS
- 18 APPLY SUCCO TO ALL EXTERIOR TERRACES
- 19 APPLY SUCCO TO ALL EXTERIOR BALCONIES
- 20 APPLY SUCCO TO ALL EXTERIOR STAIRS
- 21 APPLY SUCCO TO ALL EXTERIOR RAMP
- 22 APPLY SUCCO TO ALL EXTERIOR DRIVEWAYS
- 23 APPLY SUCCO TO ALL EXTERIOR GARAGES
- 24 APPLY SUCCO TO ALL EXTERIOR PORCHES
- 25 APPLY SUCCO TO ALL EXTERIOR PATIOS
- 26 APPLY SUCCO TO ALL EXTERIOR TERRACES
- 27 APPLY SUCCO TO ALL EXTERIOR BALCONIES
- 28 APPLY SUCCO TO ALL EXTERIOR STAIRS
- 29 APPLY SUCCO TO ALL EXTERIOR RAMP
- 30 APPLY SUCCO TO ALL EXTERIOR DRIVEWAYS