



Truckee Fire 2024

COMMUNITY WILDFIRE PROTECTION PLAN



October 25, 2024 – Tahoe Donner



AGENDA

1.What is a CWPP?

2.Overview of CWPP Process

3.Adoption Plan

4.Next Steps - Implement, Mitigate, Protect

5.Project Tracker – Info Hub - Dashboard



WHAT IS A COMMUNITY WILDFIRE PROTECTION PLAN(CWPP)?

Healthy Forest Restoration Act(HFRA) 2003 encourages CWPPs – numerous guides and models to follow – access to state and federal grants – Similar to a LHMP, but zooms in on just wildfire risk and promoting healthy forests

CWPP is a plan to reduce threats to life and property from wildfire

- Makes recommendations:
 - Fuels reduction
 - Structural Ignitability
 - Public education and outreach
 - Fire response capabilities
- Rooted in facilitated collaboration with local, state, and federal agencies, well as non-governmental stakeholders and private citizens



WHAT IS A COMMUNITY WILDFIRE PROTECTION PLAN?

Project History

As wildfire severity increases, communities are seeking ways to better prepare for future wildland fire events. Community Wildfire Protection Plans (CWPPs) are used to proactively evaluate and mitigate wildfire risk in the community by providing recommendations that intend to reduce the extreme severity or risk of wildfire.

Development of the CWPP is rooted in facilitated collaboration among local, state, and federal agencies, as well as non-governmental stakeholders and private citizens. The CWPP identifies potential priority areas where mitigation measures can help protect the irreplaceable life, property, and critical infrastructure within and adjacent to the Truckee FPD. This document is advisory, not mandatory.



Prioritized Wildfire Mitigation Roadmap

This 2024 CWPP does not attempt to mandate the type and priority of treatments and projects that will be carried out by land management agencies and private landowners. Rather, the intent is to provide a community-wide assessment of wildfire risk and mitigation measures, bring together the responsible fire management entities, and support these entities in implementing the recommended measures.



CWPP PROCESS

Truckee Fire doing things the TRUCKEE WAY!

- Measure T – Local dedicated funding for Wildfire Prevention created a need and desire for a cutting edge CWPP. Leading example of taking a data driven, scientific, and collaborative process to planning for a major community concern – WILDFIRE
- Truckee Fire built upon the success of the Middle Truckee River Watershed Forest Health Assessment and their growing forest partnership, and contracted with 3 top-notch consultants:
 - 1. SWCA Environmental Consultants
 - 2. Vibrant Planet – Land Tender Software
 - 3. Ladris Evacuation Modeling



CWPP PROCESS

Truckee Fire presenting at the International Association of Fire Chiefs Wildland Urban Interface Conference (WUI Conference) in Reno, NV along with Vibrant Planet and Fire Aside.

"Static to Dynamic: CWPP's Vital Transformation"



COMMUNITY ENGAGEMENT

- Bi-Weekly to Monthly Project Team Meetings (Dec 2022-April 2024)
- Routine Stakeholder Engagement and dedicated Stakeholder Update Meetings (2023-April 2024)
- Community Engagement & Public Comment Period
 - Presentations, Education, Paper Mapping Exercises
 - Receive Input, Feedback, Comments, and Priorities
 - Digital, Written, and In-Person
- Final Joint Project & Stakeholder Team Meeting (April 2024)



CWPP PROCESS

Simple Steps:

- ✓ Convene and engage decision makers ✓
- ✓ Convene and engage stakeholders ✓
- ✓ Establish Community Base Map – WUI Map ✓
- ✓ Conduct In-Depth Community Risk Assessment ✓
- ✓ Establish Community Priorities & Recommendation ✓
- ✓ Develop Actionable & Implementable Plan ✓
- ✓ Engage the Community for Education, Input, and Feedback ✓

- Finalize the Plan

- *Implement the plan



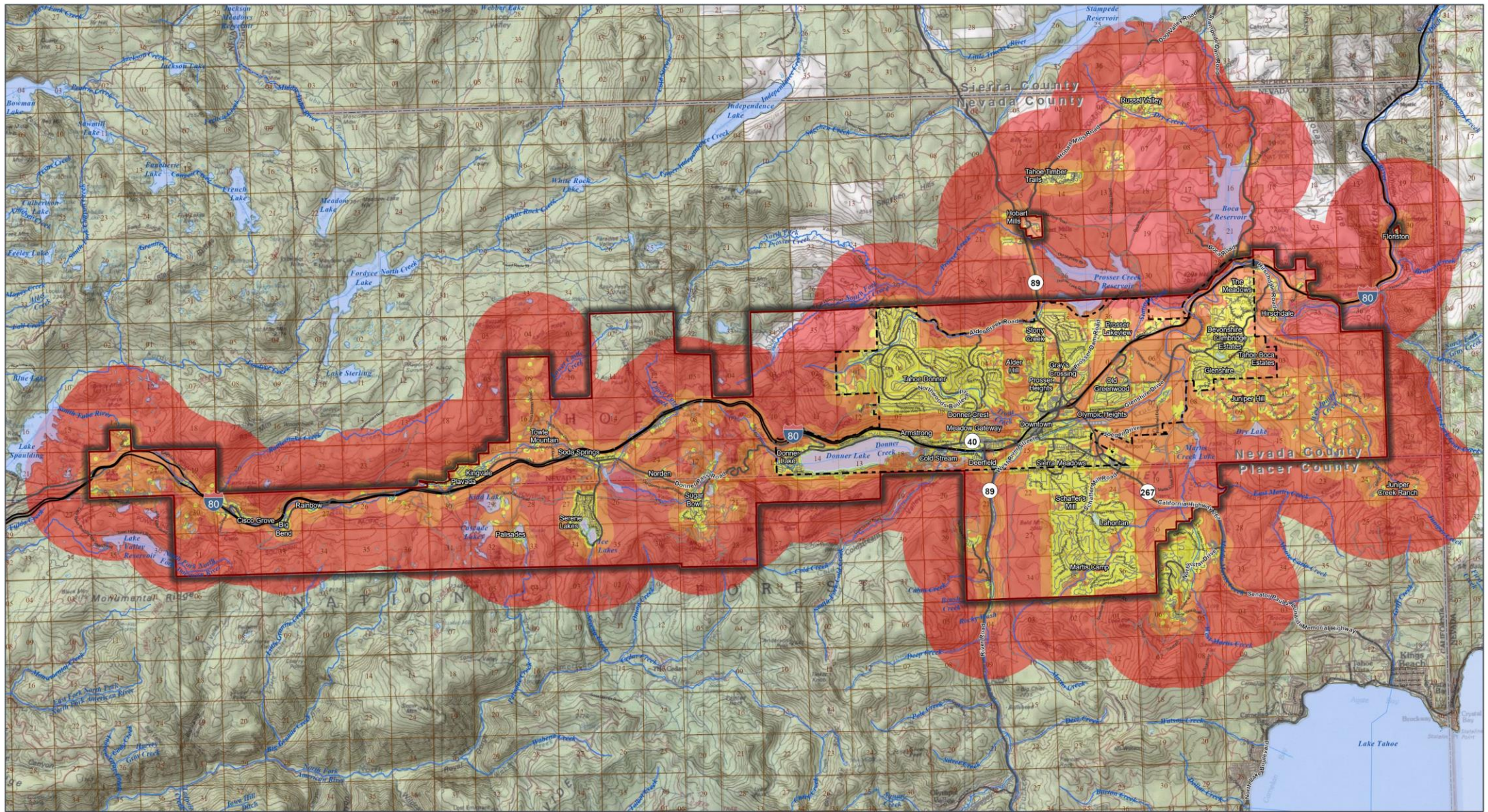
What we are doing now



WILDLAND URBAN INTERFACE (WUI)

- **Truckee Fire:**
 - **WUI Intermix** was created utilizing a map of all structures from 2022 and buffering the structures by 250 feet with manual correction within subdivision boundaries.
 - **WUI Defense** is a ¼ mile buffer off of WUI intermix and a 500 feet buffer off major roadways.
 - **WUI Threat** is a 1¼ mile buffer off of WUI Defense.





TRUCKEE FIRE PROTECTION DISTRICT
COMMUNITY WILDFIRE PROTECTION
PLAN

Wildland Urban Interface

- | | |
|-----------------|------------------------------------|
| — Highway | — Town of Truckee |
| — Major Roadway | — Truckee Fire Protection District |
| — Roadway | — PLSS |
| — Stream/River | — County Boundary |
| — Waterbody | |

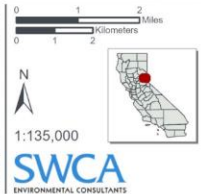
Wildland Urban Interface Class

- | | |
|--------|----------|
| Yellow | Intermix |
| Orange | Defense |
| Red | Threat |

WUI Map Methodology

WUI Intermix was created utilizing a map of all structures from 2022 & buffering 250 ft from structures, manually correcting to WUI intermix within subdivision boundaries. WUI Defense is a ¼ mi buffer off of WUI intermix and a 500 ft buffer off major roadways, WUI Threat is a 1¼ mi buffer off of WUI Defense.

Nevada and Placer Counties, CA
NAD 1983 UTM Zone 10N
39.3401°N 120.3137°W



Base Map: ESRI ArcGIS Online,
accessed August 2023
Updated: 8/10/2023
Project No. 70287
Layout: TruckeeWUI
Apix: 70287_biswmaps

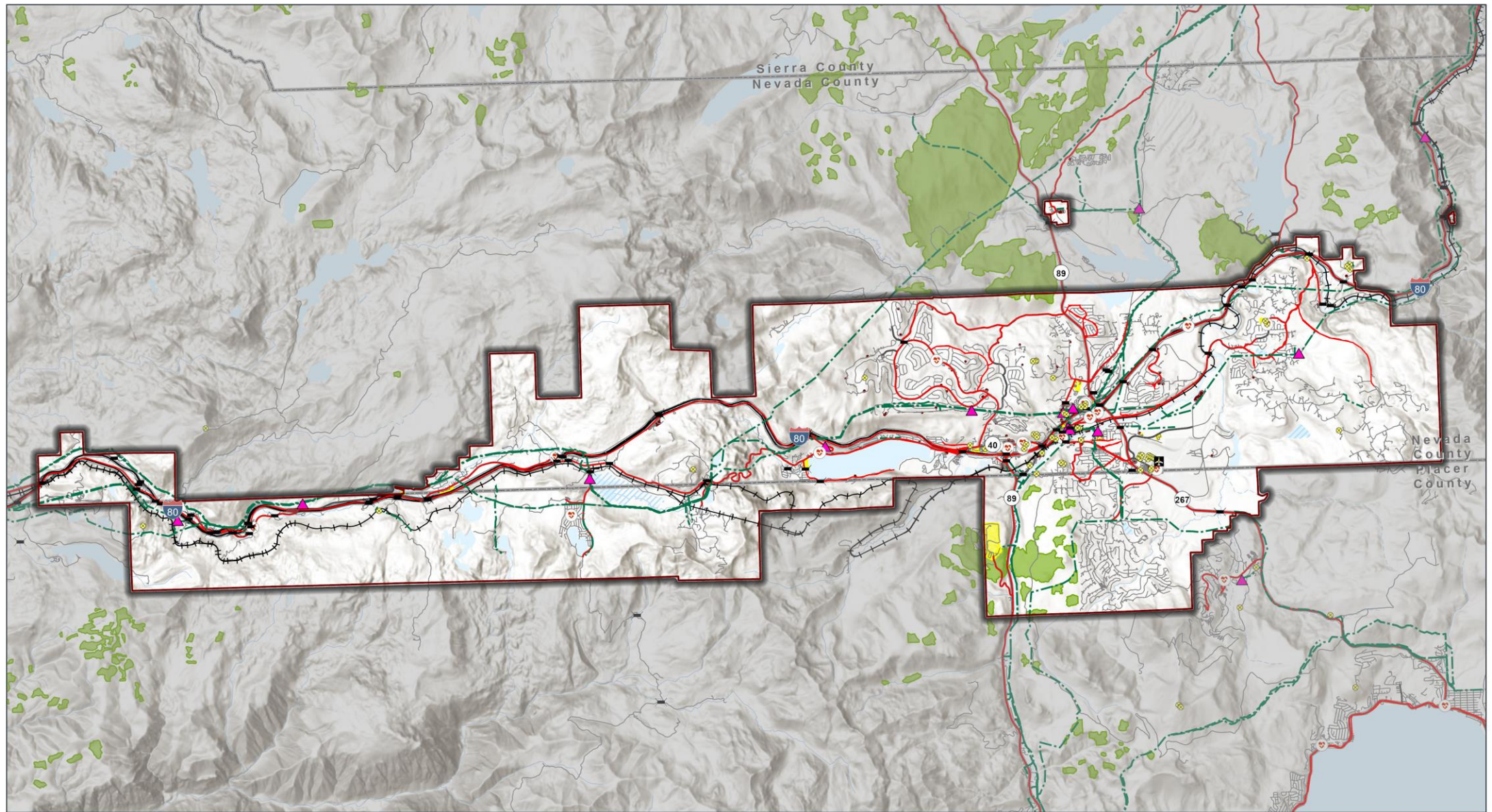
1:135,000
SWCA
ENVIRONMENTAL CONSULTANTS

STRATEGIC AREAS, RESOURCES, AND ASSETS (SARAS)

Resources within the planning area at risk of wildfire:

- Cultural, natural, socioeconomic
- Specific to each community (Donner Summit, Central Truckee, East Truckee, Tahoe Donner HOA, Martis Valley)
- E.g. critical access routes, hospitals, schools, plant & animal communities
- Good Data In = Good Plan Out

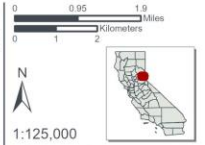




TRUCKEE FIRE PROTECTION DISTRICT
COMMUNITY WILDFIRE PROTECTION
PLAN
**Assets, Safety, and
Infrastructure**

- | | | |
|------------------------------|----------------------|----------------------------------|
| Airpot | Transmission Line | Critical Infrastructure |
| Communication Infrastructure | Critical Access Road | Hazardous Material Site |
| Bridge | Railroad | Plantation |
| Mine | Highway | Truckee Fire Protection District |
| Emergency Service Facility | Major Roadway | County Boundary |
| Energy Facility | Roadway | |

Nevada and Placer Counties, CA
NAD 1983 UTM Zone 10N
39.3401°N 120.3137°W



Base Map: ESRI ArcGIS Online,
accessed August 2023
Updated: 8/25/2023
Project No. 76287
Layout: assetsSafety
Aprx: 76287_basemaps

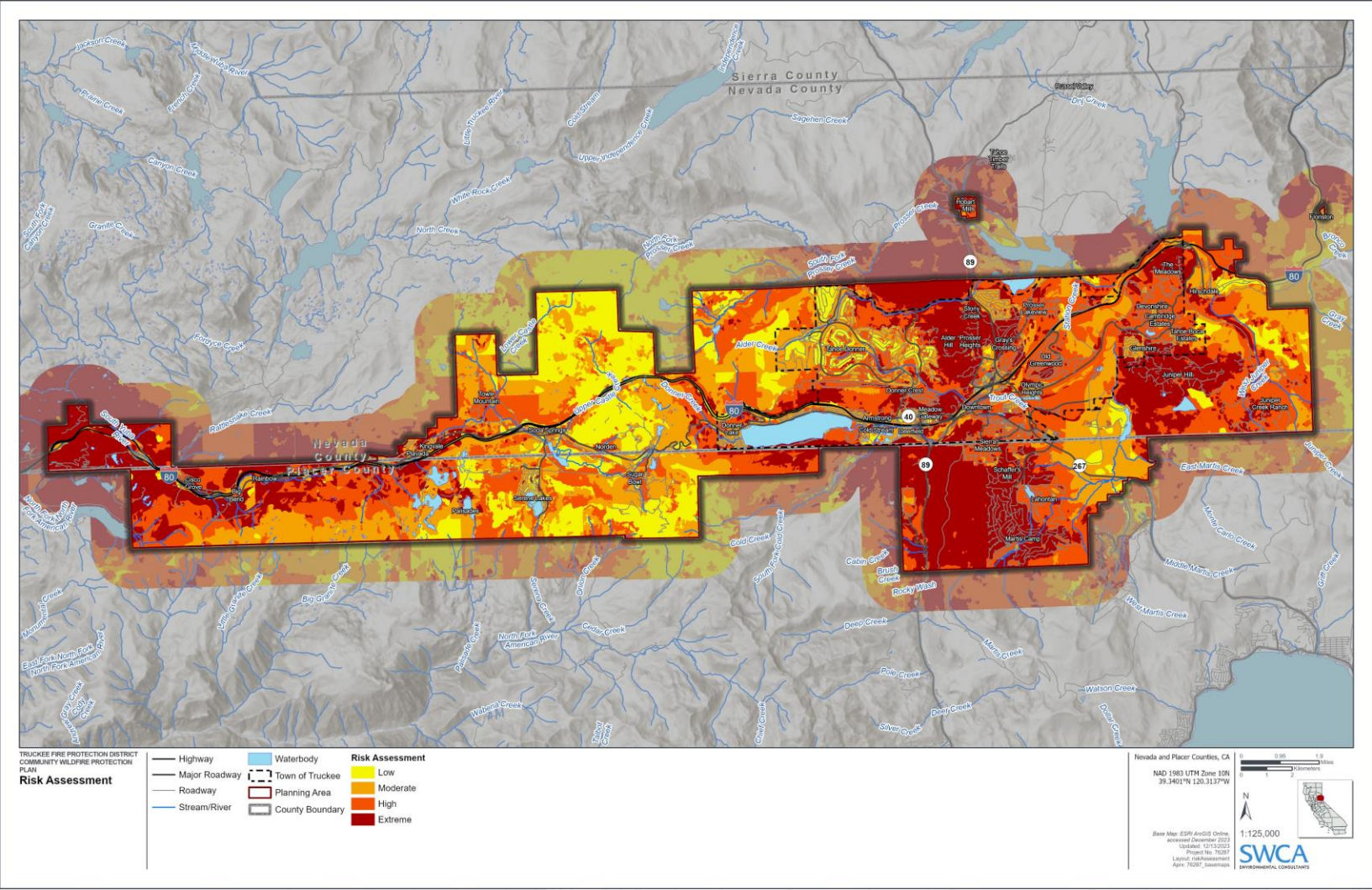
1:125,000
SWCA
ENVIRONMENTAL CONSULTANTS

RISK ASSESSMENT

- Evaluates hazard of wildland fires to communities and open spaces within the planning area, WUI, and exposure and susceptibility
 - **Hazard:** likelihood and intensity of a wildfire occurring in a location on the landscape
 - **Risk:** hazard plus the exposure and susceptibility to that hazard
- Characterizes predicted threat from fire on values that often overlap across the landscape
- Uses GIS-based model formed from key inputs
- Classifies amount of risk across the landscape
- Land Tender provides the industry's leading synthetic lidar, Pyrologix Fire Modeling, and vegetation growth modeling.



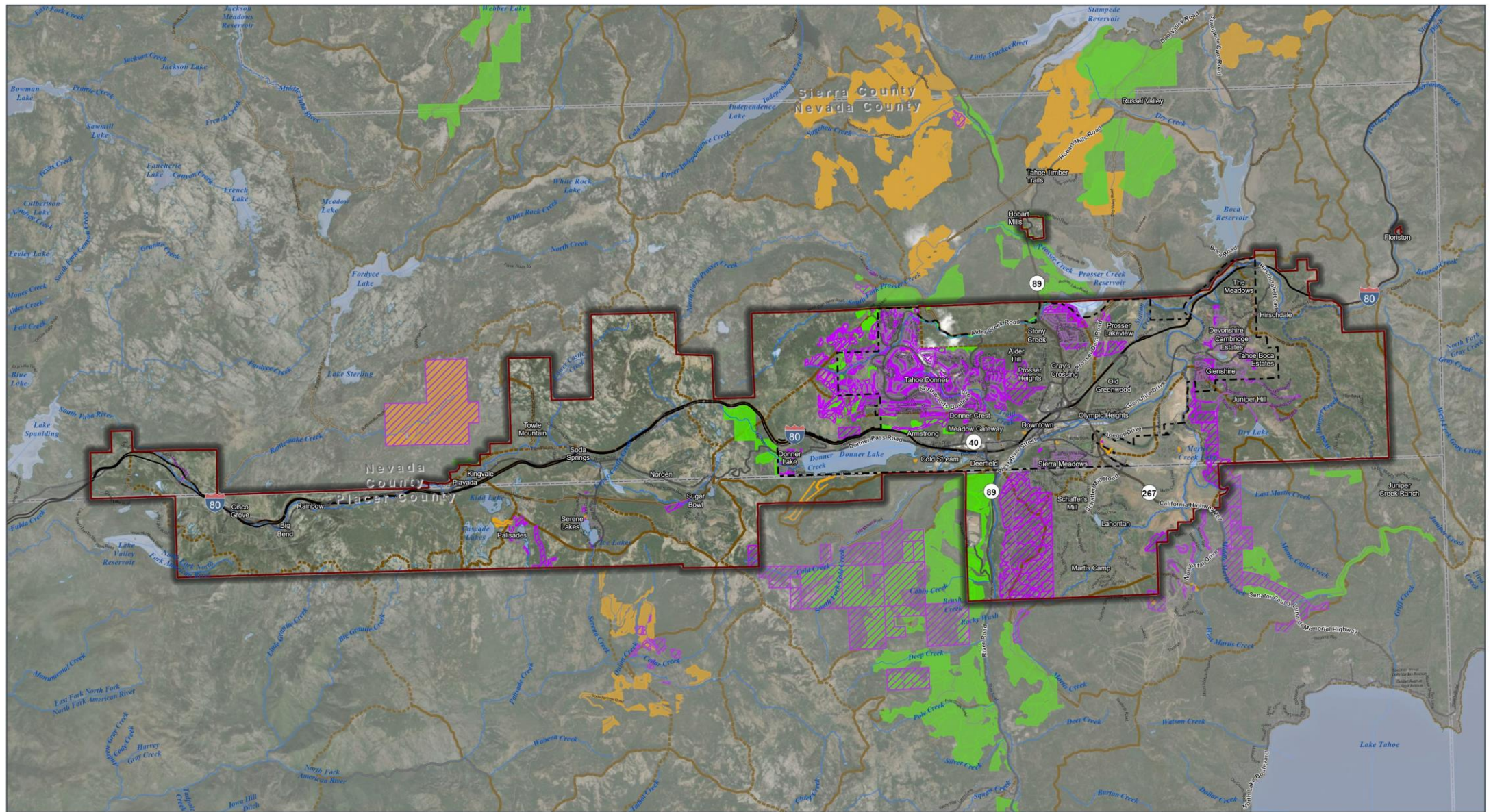
RISK ASSESSMENT: TRUCKEE



ONGOING AND PLANNED FUELS TREATMENTS

- Consolidation of stakeholder and agency work in Truckee area
- Various treatment methods dependent on project location, goals, resources, etc. (mastication, thinning, prescribed burning, and dead tree and shrub removal)
- Fuels treatments provide many benefits
 - Reduces fire risk to communities in the WUI
 - Reduces fuel loading and fuel continuity, and thus fire behavior
 - Enhances firefighter safety and increases the efficiency of fire suppression actions
 - Increases ecosystem health and resilience





TRUCKEE FIRE PROTECTION DISTRICT
COMMUNITY WILDFIRE PROTECTION
PLAN

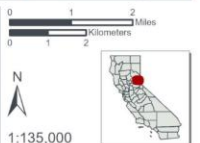
Fuel Treatments

- Highway
- Major Roadway
- Roadway
- Stream/River
- Waterbody
- - - Town of Truckee
- Truckee Fire Protection District
- County Boundary
- - - Potential Operational Delineation

Fuel Treatments (2016 - 2028)

- Completed
- Implementation
- Planned

Nevada and Placer Counties, CA
NAD 1983 UTM Zone 10N
39.3401°N 120.3137°W



Base Map: ESRI ArcGIS Online,
accessed November 2023
Updated: 11/13/2023
Project No. 76287
Layout: truckee-fire-treatments
Apr. 76287_basemaps

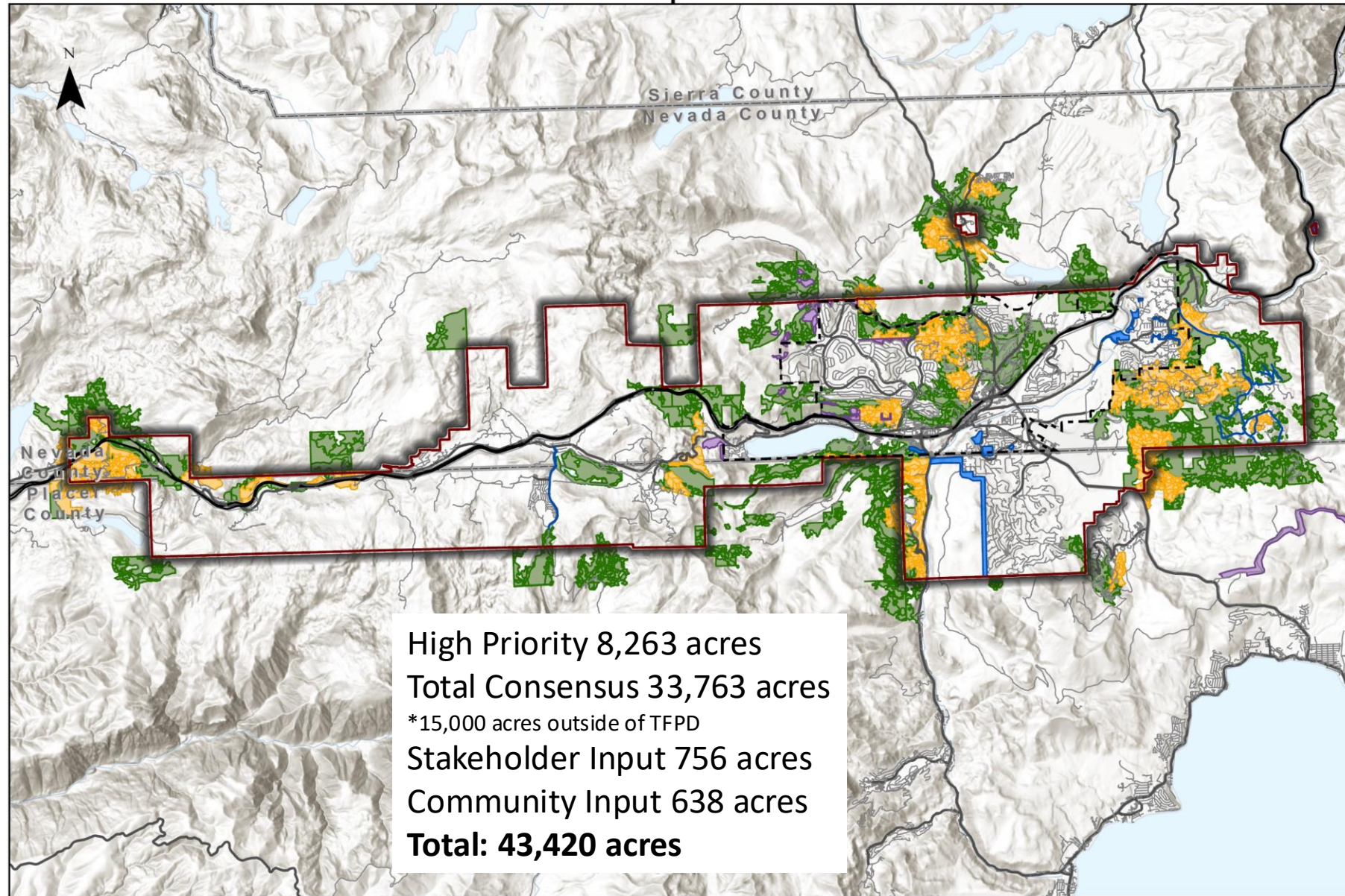
1:135,000
SWCA
ENVIRONMENTAL CONSULTANTS

PRIORITIZED FUELS TREATMENTS

- Collaborative effort of the Project Team (stakeholders and agencies) using Land Tender – cutting edge software
- Iterative exercise helped prioritize future fuels treatments in the CWPP planning area
 - Prioritized recommendations generally align with areas at greatest risk relative to other areas
- Vibrant Planet was with us along the way, and still is, to assist with the Land Tender software and process utilized



Land Tender Scenario Outputs - Fuels Treatments



- Land Tender Scenarios - Total Consensus
- Land Tender Scenarios - High Priority
- Community Inputs

0 2.5 5 10 Miles



RECOMMENDATIONS

- Serve as an action plan for implementation
- Recommendations for
 - **Restore and Maintain Landscapes** (Fuels Treatments) - accomplished through Land Tender
 - **Creating Fire-Adapted Communities** (Public Education and Reducing Structural Ignitability)
 - **Safe, Effective, Risk-Based Wildfire Response** (Improving and Aiding Emergency Response)



RESTORE & MAINTAIN LANDSCAPES

Recommendations for Restoring and Maintaining Resilient Landscapes

Project ID	Project Description	Lead Agency (Partners and Collaborators)	Approach and Purpose
RL #1	Landscape-scale forest management and fuel reduction treatments	All agencies and land managers	Coordinate multi-jurisdictional and collaborative interagency forest management and fuels treatments on lands managed by local, state, federal, and non-governmental organizations using outputs from this CWPP to inform decision making and priorities. Work to increase collaboration with partner agencies on grant proposals to accomplish this work.
RL #2	Fuels treatments technical support	Truckee Fire, Resource Conservation Districts, Fire Safe Councils	Provide technical information, guidance, and answers to questions on technical forest and fuels treatment topics to better support property owners conducting work on private lands.
RL #3	Prescribed burn associations	Resource Conservation Districts/Fire Safe Councils	Establish community or homeowners association (HOA)-level prescribed burn associations to promote fuels reduction and provide education on conducting prescribed burning treatments by private property owners.
Measure T	Seasonal workforce capacity	Truckee Fire	Increase seasonal workforce to facilitate increased education, inspections, and accountability to property owners.
Measure T	Fuels treatments along evacuation routes	Town, Counties, CALTRANS, Communities, Truckee Fire	Design and implement projects that address ingress and egress issues. Remove brush, dead trees, and ladder fuels along critical evacuations routes to keep fire intensity low in the event of an evacuation.
Measure T	Critical infrastructure defensible space	Truckee Fire (infrastructure owners)	Using the CWPP consensus scenario map, work with owners of critical infrastructure to prioritize fuels reduction adjacent to critical infrastructure and emergency service areas.
Measure T	Defensible space assistance for elderly, disabled, and low-income residents	Truckee Fire	Develop and implement an assistance program for elderly, disabled, and low-income residents to achieve defensible space compliance.
Measure T	Provide assistance for residential dead tree removal	Truckee Fire	Develop and implement a dead tree removal assistance program for elderly, disabled, and low-income residents to achieve defensible space compliance and to mitigate public safety hazards.
Measure T	Community Wildfire Prevention Grants	Truckee Fire	Provide a local community grant program that makes funding available to private land owners, agencies, non-governmental organizations (NGOs), and other land managers for various different project types that promote wildfire resilience.
Measure T	Community fuel breaks and fuel reduction	Truckee Fire (Community)	Use CWPP consensus scenario fuel treatment map to prioritize community fuel breaks and fuel reduction efforts. Work with partners and the community to gain increased support and capacity to implement these strategic and high-priority projects. Ensure landowners understand forestry and their requirement/need to maintain desired forest conditions.

Note: RL = resilient landscapes



FIRE ADAPTED COMMUNITIES (PUBLIC EDUCATION & REDUCING STRUCTURAL IGNITABILITY)

Project ID	Project Description	Lead Agency (Partners and Collaborators)	Approach and Purpose
Community Emergency Response Team (CERT)	Educate citizens about disaster preparedness for hazards that could impact the community. Train citizens in basic disaster response skills.	Truckee Fire	<ul style="list-style-type: none"> Citizens are trained in fire safety, light search and rescue, team organizations, and disaster medical operations. This builds a more educated community through outreach and education.
Measure T	Rebate program for home hardening upgrades	Truckee Fire	<ul style="list-style-type: none"> Eligible residents may apply for home hardening rebate/assistance. Eligible residents can schedule a defensible space inspection, complete the upgrades, and schedule a reinspection or submit photos and then are able to request a rebate.
FA #1	Create organizational chart	Truckee Fire (Project Team and Stakeholders Group)	<ul style="list-style-type: none"> Develop an organizational chart for associations, local government, and other entities that will reduce duplication of effort on engagement.
FA #2	Educational programs on fire as an ecosystem process	All agencies and land managers	<ul style="list-style-type: none"> Information on the threat of fire, forest management, and the use of prescribed fire will help educate the public and gain support for this type of work.
FA #3	Homeowners association (HOA)/neighborhood communication	Truckee Fire, HOAs, Firewise communities	<ul style="list-style-type: none"> Increased communication to HOAs and Firewise neighborhoods will help explain available resources and ensure the community stays informed.
FA #4	Wildfire preparedness media campaigns	Truckee Fire (Project Team and Stakeholders Group)	<ul style="list-style-type: none"> More easily accessible resources will help the public learn how to harden homes and prepare for wildfire. Emergency preparedness, evacuation readiness, and go-bags.
FA #5	Multi-language resources	Truckee Fire (Project Team and Stakeholders Group)	<ul style="list-style-type: none"> Produce material in both English and Spanish that can be shared at community events and sent directly to the homeowners.
FA #6	Enforcement and support	Truckee Fire (Project Team and Stakeholders Group)	<ul style="list-style-type: none"> More stringent code regulations for defensible space in HOAs More funding sources for property owners More funding resources for low-income areas Mechanism for maintaining/upkeep for storage, defensible space, etc. Increased education for property owners on specific defensible space and home hardening measures, including materials to use, explaining terminology, showing defensible space examples



FIRE ADAPTED COMMUNITIES (PUBLIC EDUCATION & REDUCING STRUCTURAL IGNITABILITY)

Project ID	Project Description	Lead Agency (Partners and Collaborators)	Approach and Purpose
FA #7	Communication and outreach	Truckee Fire, town, local law enforcement	<ul style="list-style-type: none">• Identify evacuation routes• Cohesive digital app that provides information and status update on emergencies, wildfires, evacuations, and prescribed burns• Financial support for Community Organizations Active in Disasters• Determine alternative outlet besides cell service.• Identify evacuation plans ahead of time• Wireless Emergency Alert support• Improve awareness of grants, rebates, and insurance discounts both for property owners and HOAs
FA # 8	CWPP team or charter	Truckee Fire (Project Team and Stakeholders Group)	<ul style="list-style-type: none">• Establish a working collaborative group that meets semi-regularly to champion this CWPP and maintain coordinated working efforts and grant applications.

Note: FA = Fire Adapted



SAFE & EFFECTIVE WILDFIRE RESPONSE

Project ID	Project Description	Lead Agency (Partners and Collaborators)	Approach and Purpose
Measure T	Improve address visibility for emergency response	Town and Counties (Truckee fire, HOAs, Firewise)	Make street signs and house numbers highly visible to ensure first responders can arrive quickly to the proper address. HOAs and the Town can require this.
Measure T	Maintain and expand green waste programming	Truckee Fire, Counties, Town	Continue to support residential green waste removal efforts. Allow all residents to put defensible space-generated waste for curbside pickup of small woody material. Consider more solutions for pine needles.
Measure T	Increase communication and public relations capacity	Truckee Fire (Project Team and Stakeholders Group)	Expand capacities through positions or consultants for public outreach, communications, public alerts, and collaboration.
Measure T	Seasonal workforce capacity	Truckee Fire	Increase seasonal workforce to facilitate increased education, inspections, and accountability to property owners.
WR #1	Fuels treatments along evacuation routes	Town, Counties, CALTRANS, Communities, Truckee Fire	Design and implement projects that address ingress and egress issues. Remove brush, dead trees, and ladder fuels along critical evacuations routes to keep fire intensity low in the event of an evacuation.
Measure T	Critical infrastructure defensible space	Truckee Fire (infrastructure owners)	Prioritize fuels reduction adjacent to critical infrastructure and emergency service areas.
Measure T	Defensible space assistance for elderly, disabled, and low-income residents	Truckee Fire	Develop and implement an assistance program for elderly, disabled, and low-income residents to achieve defensible space compliance.
Measure T	Property owner defensible space	Truckee Fire, Communities (HOAs, Firewise)	Educate public on importance of defensible space and local ordinances. Encourage compliance through enforcement of STRs, new development, property transfer, insurance requirements, and properties with egregious fire hazards.
WR #2	Community technical assistance	Truckee Fire	Create a "FACT" sheet and flowchart that provides residents with resources for project development and maintenance, and also allows residents to know what assistance they qualify for and how to apply.
WR#3	Firewise and home hardening measures	Truckee Fire, HOAs, Firewise	Educate property owners to get involved in home hardening and Firewise activities, as well as renters.

Project ID	Project Description	Lead Agency (Partners and Collaborators)	Approach and Purpose
WR#4	Communication tools	Truckee Fire, Counties, Town	<ul style="list-style-type: none"> Create a cohesive digital app where agencies can put updates of emergencies, wildfires, and evacuations, as well as prescribed burns nearby. Spread awareness on 211 Connecting Point, a 24/7 resource for emergency and non-emergency situations and information. Create focused communication for out-of-town residents, visitors, and Spanish speaking individuals.
WR#5	Expand early fire detection systems	Truckee Fire, Town	Consider expanding early fire detection systems in the Town and communities (e.g. cameras).
WR#6	Non-resident education	Truckee Fire, Counties, Town	Improve awareness and notification of developing emergency situations to area visitors (non-residents).

Note: WR = Wildfire Response

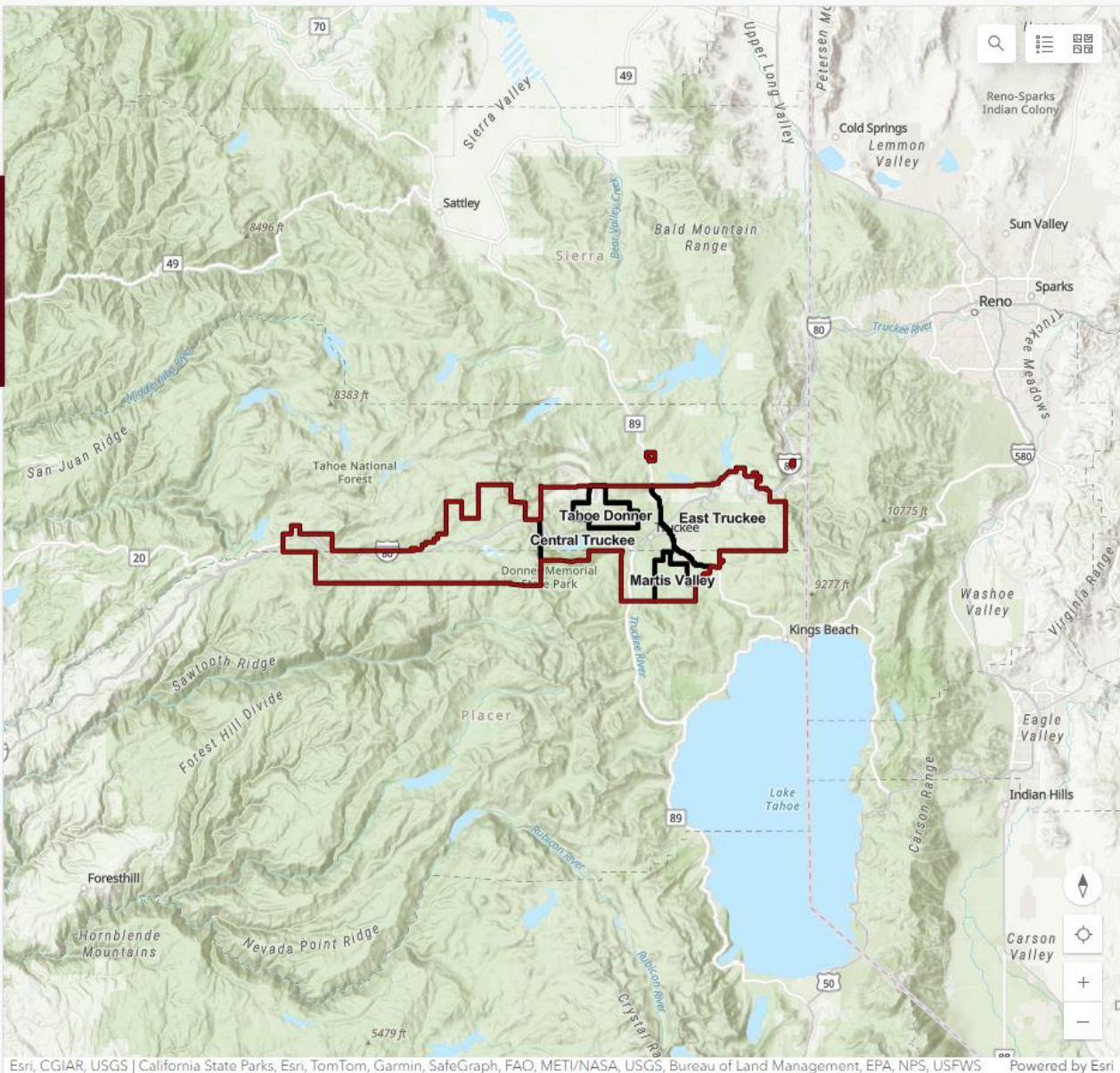


MONITORING AND TRACKING


- Monitoring and Evaluations Strategies Document in CWPP
 - Pre and Post Project Photos as standard deliverable. Permanent Photo Points. Routine LiDAR Flights, Aerial Imagery, Updates to Land Tender
 - Vegetation Plots & Forest Inventories
 - Fire Aside Inspection Data
- Tracking & Dashboard
 - Coming Winter 24/25 – www.truckee-fire.org/wildfireprevention will become the info hub and accomplishments dashboard for the CWPP and all things Measure T
 - Collaborating with Town of Truckee, Counties, Interagency Treatment Dashboard, and Tahoe Central Sierra Initiative Dashboard



IN DEVELOPMENT – TRUCKEE FIRE CWPP DASHBOARD



Projects in support of



0


No data

No data

No data

Resilient Landscapes

Projects in support of



0


No data

No data

No data

Fire-Adapted Communities

Projects in support of



0

No data

No data

No data

Wildfire Response

ADOPTION OF CWPP

- ✓ Final presentation of the CWPP and Story Map (April 2024 to Project Team & Stakeholders)
 - Summarize how feedback received was incorporated and addressed
 - Gained overall acceptance of the document from the Project Team and Stakeholders involved in the planning process
- ✓ CWPP, Story Map, and Hub Site ownership transferred to Truckee Fire
 - www.truckeefire.org/cwpp - Check it out, this Story Map is AWESOME!
- ✓ Truckee Fire gets collaborating partner signatures
 - This is what we are doing today!



SIGNATORY REQUIREMENTS

- ✓ CWPP's are required to be signed by these agencies at a minimum:
 - The Big 3 = Local Fire, Local Government, State Forester(CAL FIRE)
 - Local, State, and Federal Fire Agencies = Truckee Fire, CAL FIRE, and USFS
 - Local Government = Town of Truckee
 - County Government= Nevada County and Placer County

- ✓ Collaborating & Supporting Signing Partners
 - Tahoe Donner, Tahoe Truckee Community Foundation, Truckee River Watershed Council, Truckee Donner Land Trust, State Parks, Fire Safe Councils, RCDs, OES, OEM, Utilities, TTUSD, UP Railroad, TTAD...and more as we continue to engage, partner, and drive success.



NEXT STEPS: NOW WHAT?

- ✓ Funding for prioritized projects (fuels treatments, public education, community programs) – CWPP's open up grant opportunities and collaborative funding opportunities. Leverage each other's limited capacities and funding, prioritize work based on risk and a strategic plan
- ✓ Environmental compliance and permitting - Fuels Treatments take special care to identify, plan, scope, permit, and implement. (CEQA, FPA, THPs, Special Considerations...etc.)
- ✓ Implementation of planned and prioritized fuels treatments
- ✓ Keep Story Map, Hub Site, and Project Tracker up-to-date
- ✓ Keep Project Team and Stakeholders engaged & communicating; add new members as needed!



NEXT STEPS: FUTURE CWPP UPDATE

✓ When should it occur?

- ☐ Minimally every 5 years
- ☐ After a wildfire or other large disturbance in the planning area
- ☐ Major revisions to the National Cohesive Strategy
- ☐ Semi-annually? We created a living CWPP with Land Tender

✓ How do we do this?

- ☐ Convene the same Project Team and Stakeholders
- ☐ Review the CWPP and accompanying documents
- ☐ Assess progress and changes (plan priorities, projects/fuels treatments, funding, team members, environment)
- ☐ Assign a “lead” or POC to make changes, schedule, etc.



ALIGNMENT WITH THE TOWN OF TRUCKEE PRIORITIES

The Town of Truckee & The CWPP

- Staff & Community Involvement
- Alignment with Town Priorities and Work Efforts
 - 2040 General Plan Safety & Noise Element
 - 2023-25 Council Strategic Priorities
 - Enhancing partnerships and investment for emergency preparedness including wildfire readiness and mitigation.



ALIGNMENT WITH THE TOWN OF TRUCKEE PRIORITIES



CWPP Recommendations

Fuels treatments along evacuation routes

Communication and outreach

Communication tools

Non-resident education

General Plan Safety Element Related Action

SN-6.E Emergency Planning

SN-6.E Emergency Planning
SN-2.K: Identify and Analyze Evacuation Routes

SN-6.G Public Education on Emergency
Preparedness and Response

SN-2.H: Fire Prevention Education Programs



Thank You Truckee!

We are excited to keep working together, at all levels, to create and maintain a ***WILDFIRE RESILIENT TRUCKEE!***



Eric Horntvedt
Wildfire Prevention Manager
Truckee Fire Protection District
erichorntvedt@truckeefire.org
530-536-8159