

# The Roadmap to Resilience

## Nevada County Community Wildfire Protection Plan

CWDG Grant: 23-DG-11052012-451



Office of Emergency Services



# Introduction

**Alex Keeble-Toll**

*Interim Director, Emergency Services*

**Alessandra Zambrano**

*County Wildfire Coordinator*



**NEVADA  
COUNTY**  
CALIFORNIA

**Office of Emergency  
Services**

**READY NEVADA COUNTY**

# ROADMAP TO RESILIENCE

 EVACUATION STUDY

 LAND MANAGEMENT PLAN

 FEMA  
LOCAL HAZARD  
MITIGATION PLAN  
(LHMP)



 COMMUNITY WILDFIRE  
PROTECTION PLAN (CWPP)



# What is a CWPP?



HEALTHY FOREST  
RESTORATION  
ACT (HFRA) 2003



PLAN FOR  
WILDFIRE RISK  
REDUCTION



IDENTIFY AND  
PRIORITIZE AREAS  
FOR WILDFIRE  
MITIGATION



VERSATILE  
PLANNING  
DOCUMENT



CREATED BY THE  
COMMUNITY FOR  
THE COMMUNITY



NEVADA  
COUNTY  
CALIFORNIA

Office of Emergency  
Services

READY NEVADA COUNTY

# What is a CWPP

## A CWPP Is...

- Collaborative planning document
- A roadmap for wildfire mitigation
- A tool for identifying and prioritizing areas for risk reduction

## A CWPP Is Not...

- A mandate, rule, or law
- Intended to influence fire insurance
- CEQA or environmental analysis document



# CWPP Requirements

- **Healthy Forest Restoration Act Requirements**

1. Regional collaboration
2. Identify and prioritize wildfire risk
3. Identify strategies for reducing structural ignitability

- **Healthy Forest Restoration Act Recommendation**

- Identify best management practices for risk reduction



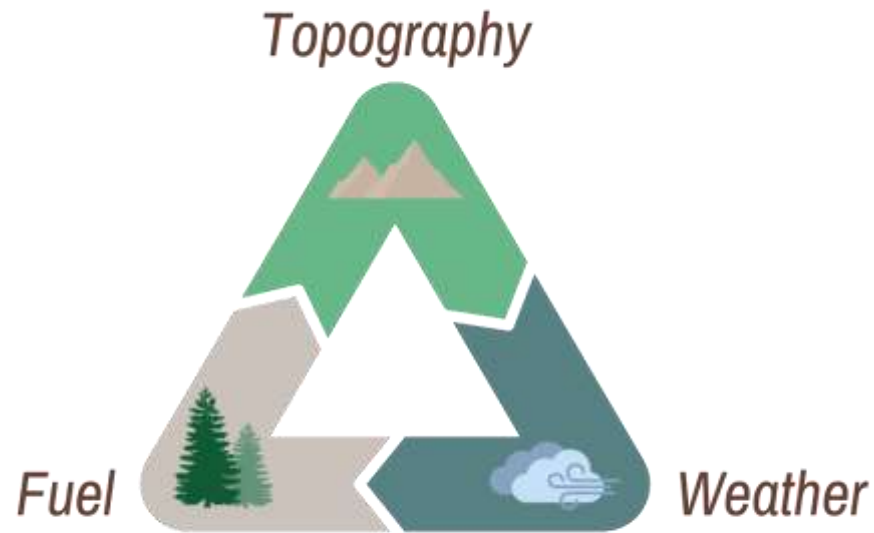
**NEVADA  
COUNTY**  
CALIFORNIA

Office of Emergency  
Services

READY NEVADA COUNTY

# Wildfire Hazard vs. Wildfire Risk

## Wildfire Hazard



## Wildfire Risk



***Wildfire Hazard** helps us understand our fire environment and **Wildfire Risk** helps us decide what to protect based on what we consider to be important*



NEVADA  
COUNTY  
CALIFORNIA

Office of Emergency  
Services  
READY NEVADA COUNTY

# Nevada County Community Wildfire Protection Plan Update

- Update 2016 CWPP
- **Community Wildfire Defense Grant (23-DG-11052012-451)**
  - \$250,000
  - Matched with California Fire Safe Council County Coordinator Grant and CAL FIRE Evacuation Study Grant
- **Five-Phased Approach**
  1. Initial Outreach
  2. Wildfire Risk Assessment
  3. **Community Wildfire Protection Plan**
  4. Land Management Plan
  5. GIS Application



**NEVADA  
COUNTY**  
CALIFORNIA

**Office of Emergency  
Services**

**READY NEVADA COUNTY**



# Nevada County CWPP Overview

- **Includes all 623,213 acres of Nevada County**
- **Developed collaboratively**
  - Technical Advisory Committee
  - Project Team
  - Stakeholder Team
  - Community Outreach
- **Coordinated with local planning efforts**



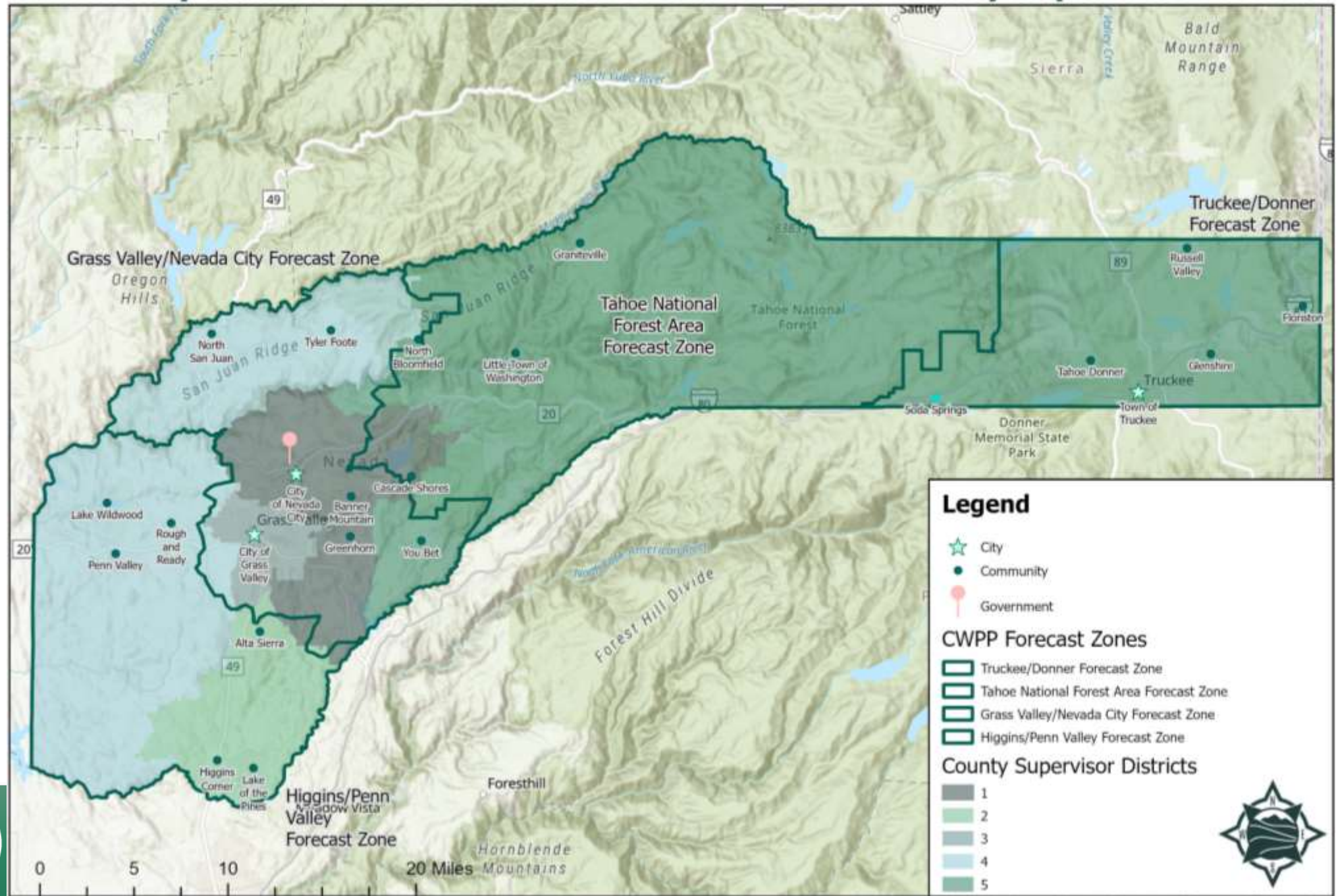
**NEVADA  
COUNTY**  
CALIFORNIA

Office of Emergency  
Services  
 **READY NEVADA COUNTY**

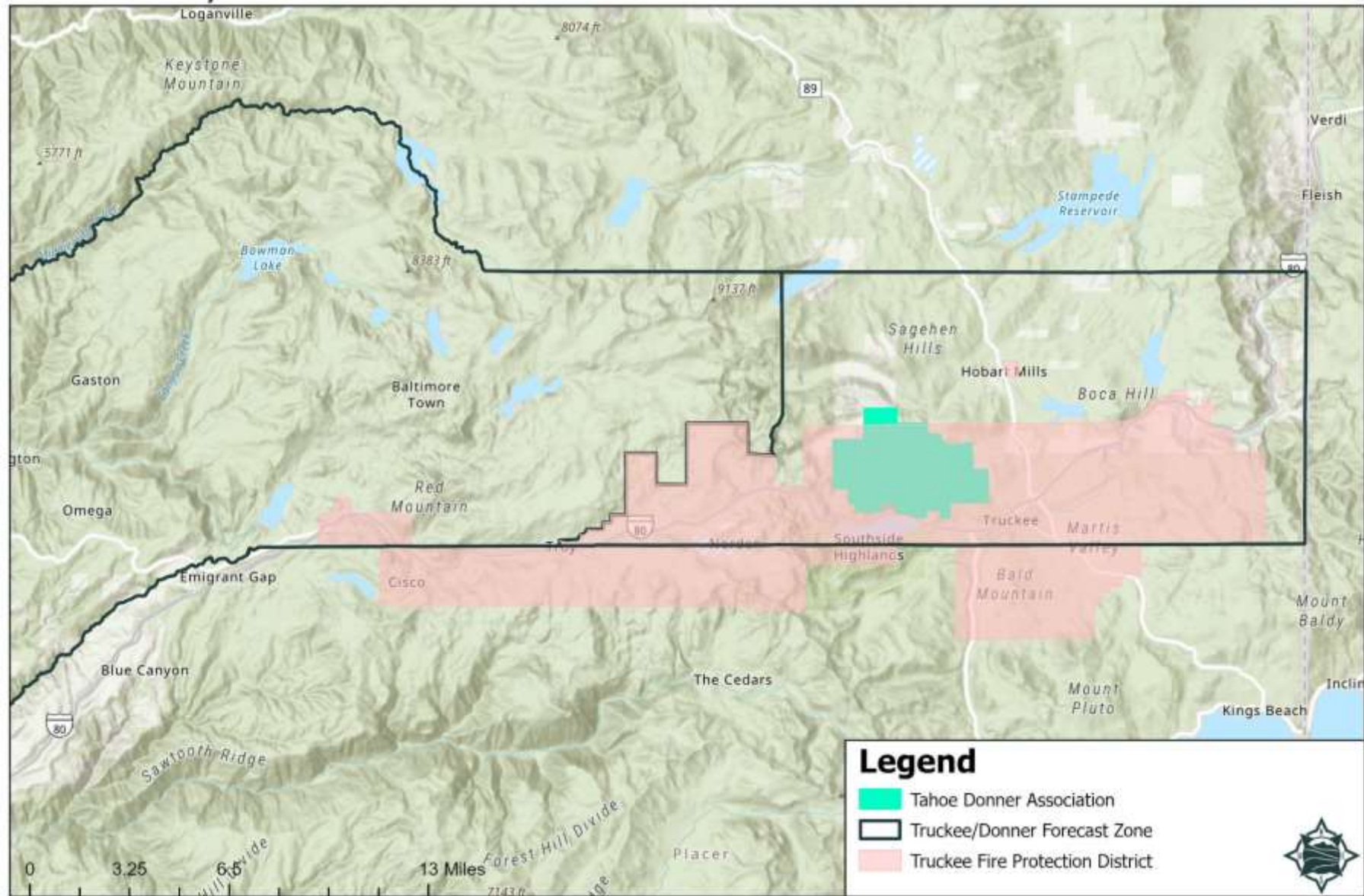
# CWPP Timeline



# Community Wildfire Protection Plan Forecast Zones & County Supervisor Districts



# Community Wildfire Protection Plan Forecast Zones



# Community Engagement



194 Initial Outreach Events



72 Survey Events



2,267 Survey Responses



4 Lunch & Learns



9 Community Risk Reduction Workshops



2 Spanish Workshops



NEVADA COUNTY CALIFORNIA

Office of Emergency Services

READY NEVADA COUNTY

# Community Wildfire Perspective

## Truckee/Donner Forecast Zone



**Nevada County  
Has A Very High  
Wildfire Risk**



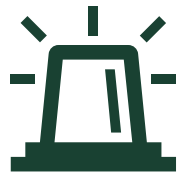
**65% Of Respondents  
Prioritize Community  
Lifelines**



**37% Of Respondents  
Said Their Personal Risk  
Was High**



**Biggest Challenge Was  
Fuel on Neighboring  
Properties**



**Evacuation  
Improvement Was  
the Highest Priority**



**84% Of Respondents  
Have Never  
Evacuated Before**



**57% of Respondents  
Would Leave as Early  
as Possible**



**Trapped On the Road  
was the Main  
Evacuation Concern**



**NEVADA  
COUNTY**  
CALIFORNIA

**Office of Emergency  
Services**

READY NEVADA COUNTY

# High-Value Resources & Assets at Risk



**Community Lifelines**



**Community Health**

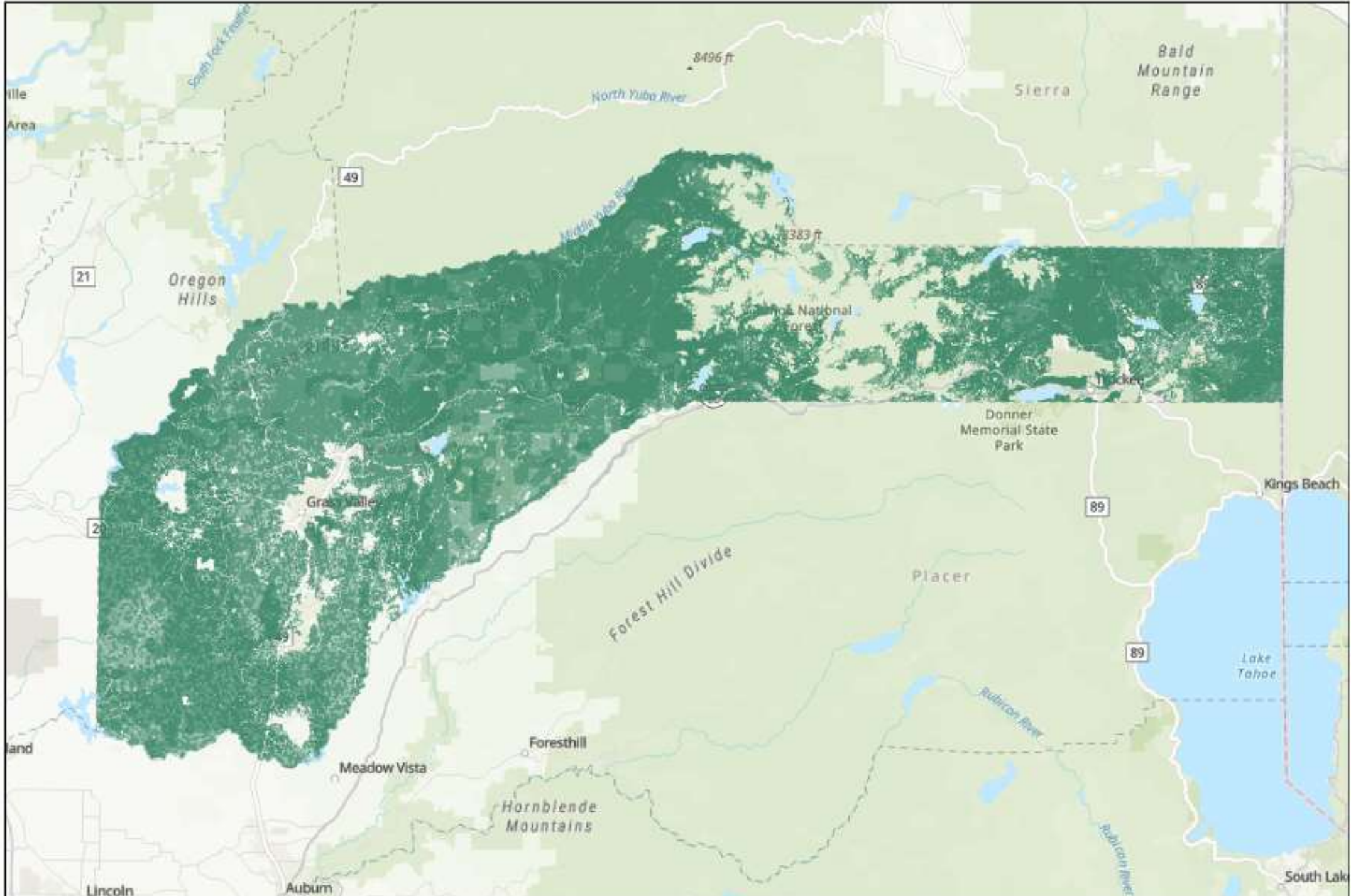


**Natural Resources**



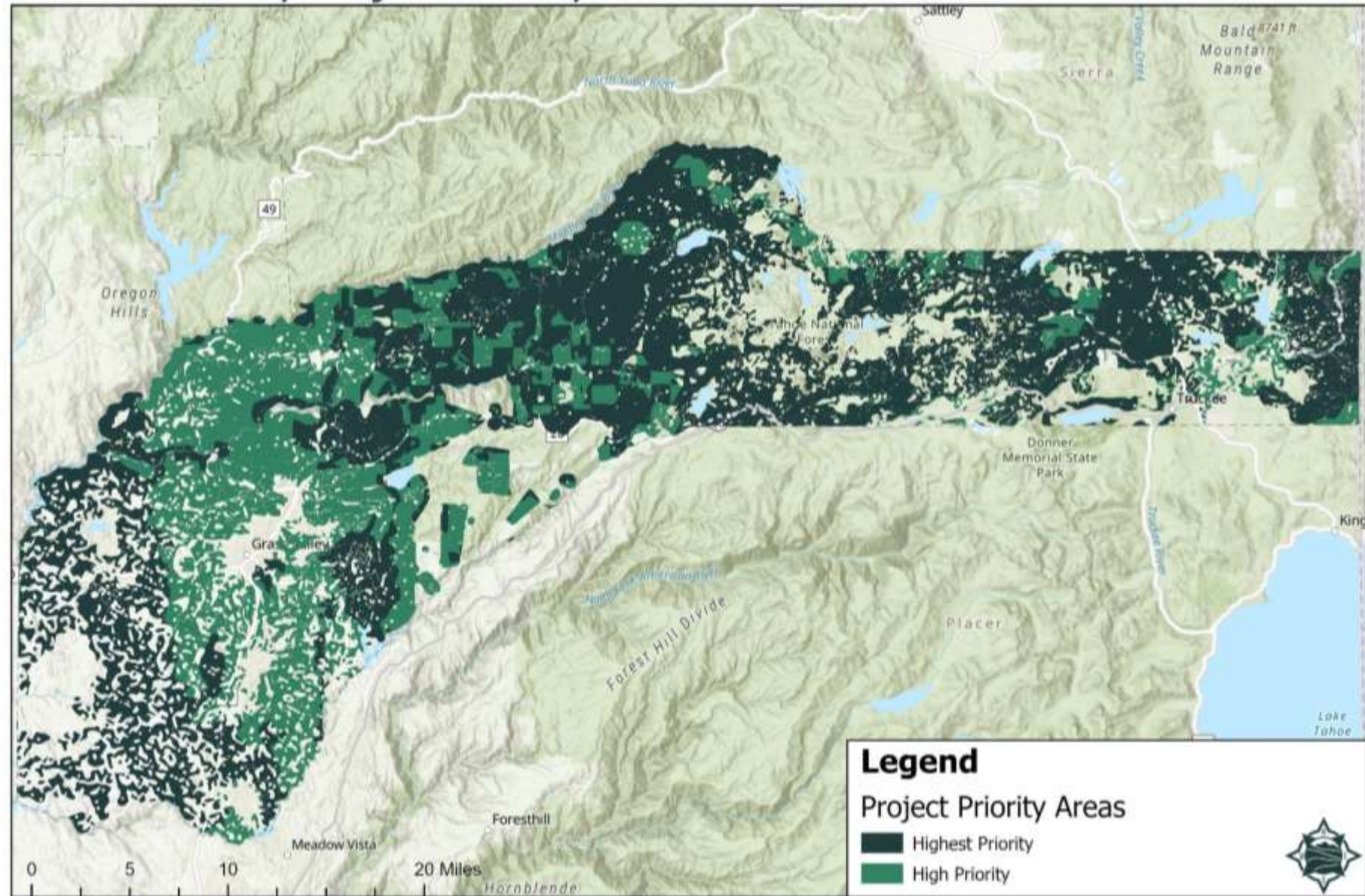
**Economic Resources**



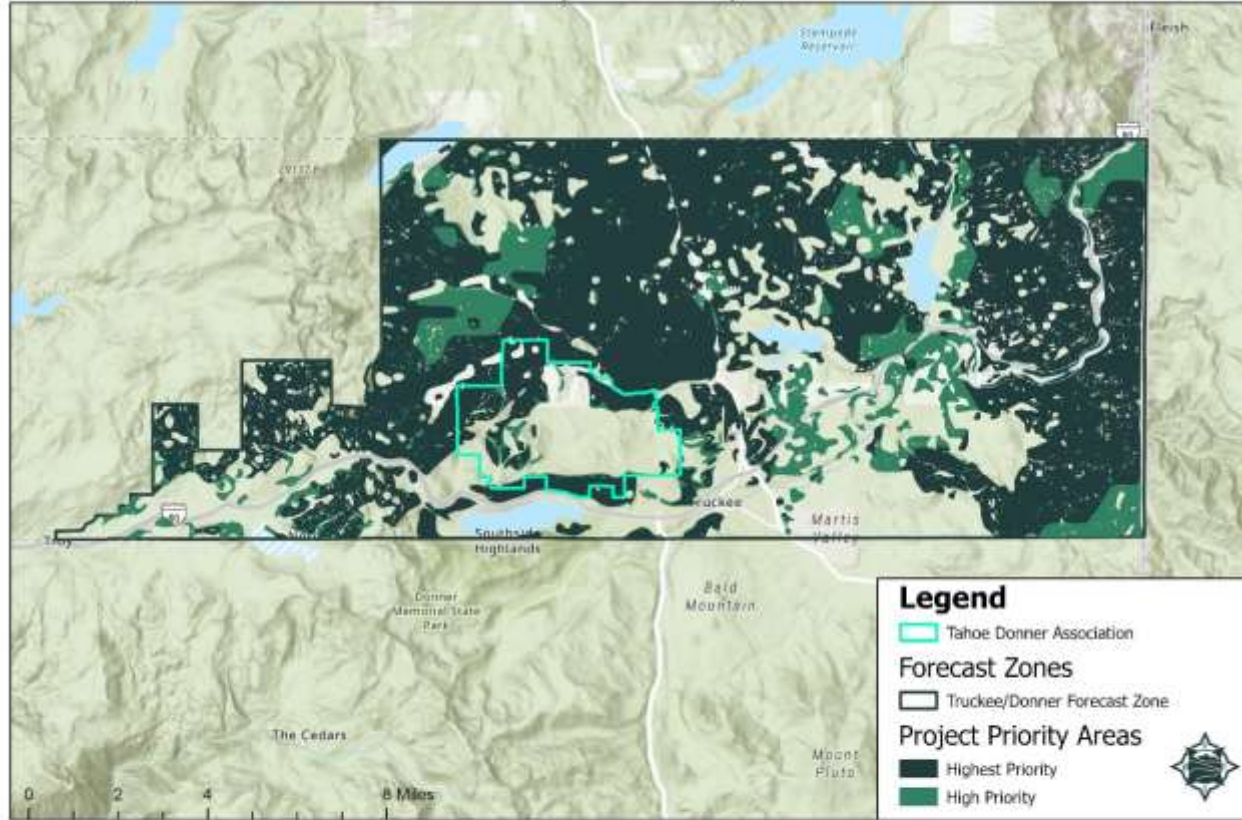




# Nevada County Project Priority Areas



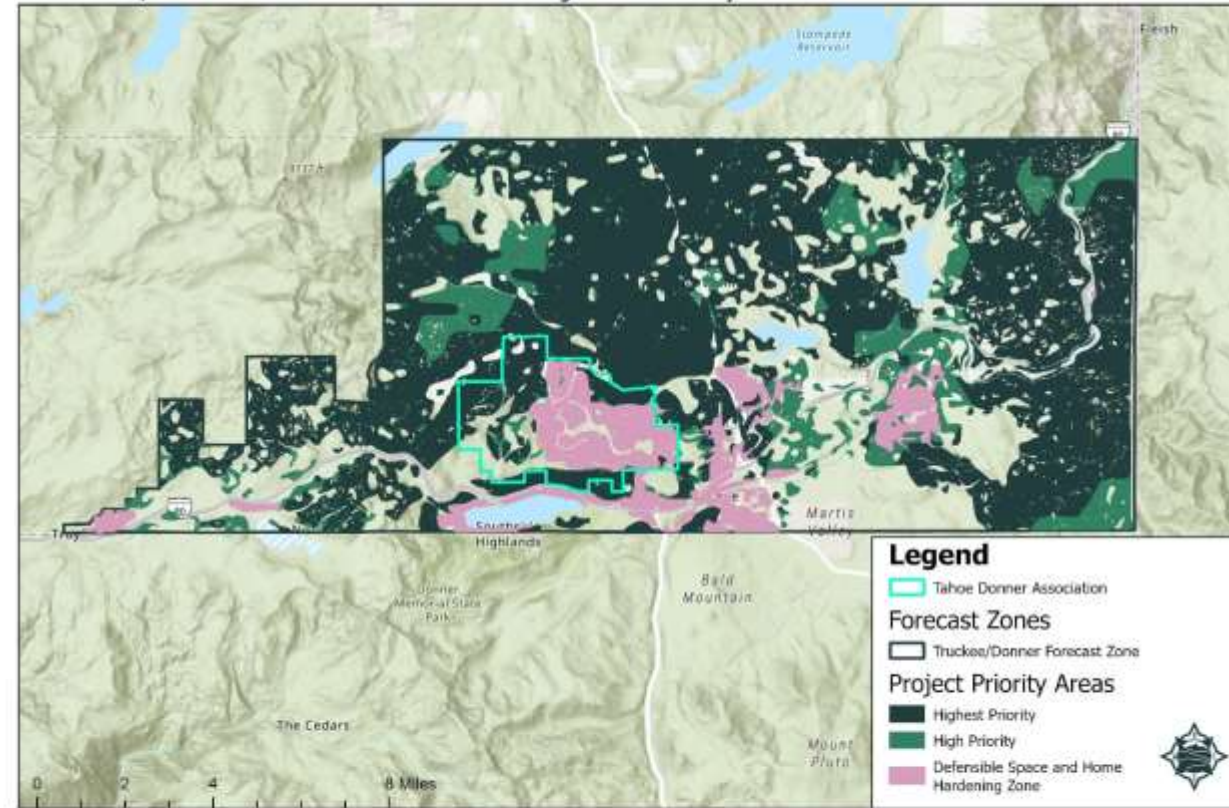
# Truckee/Donner Forecast Zone Project Priority Areas



**NEVADA COUNTY**  
CALIFORNIA  
**Office of Emergency Services**

Every reasonable effort has been made to ensure the accuracy of the maps and data provided. Nevertheless, some information may not be accurate. The County of Nevada assumes no responsibility, warranty of any kind, either expressed or implied, including but not limited to, the implied warranties of merchantability and fitness for a particular purpose, before making decisions using the information provided on this map, contact the Nevada County Public Counter staff to confirm the validity of the data provided.

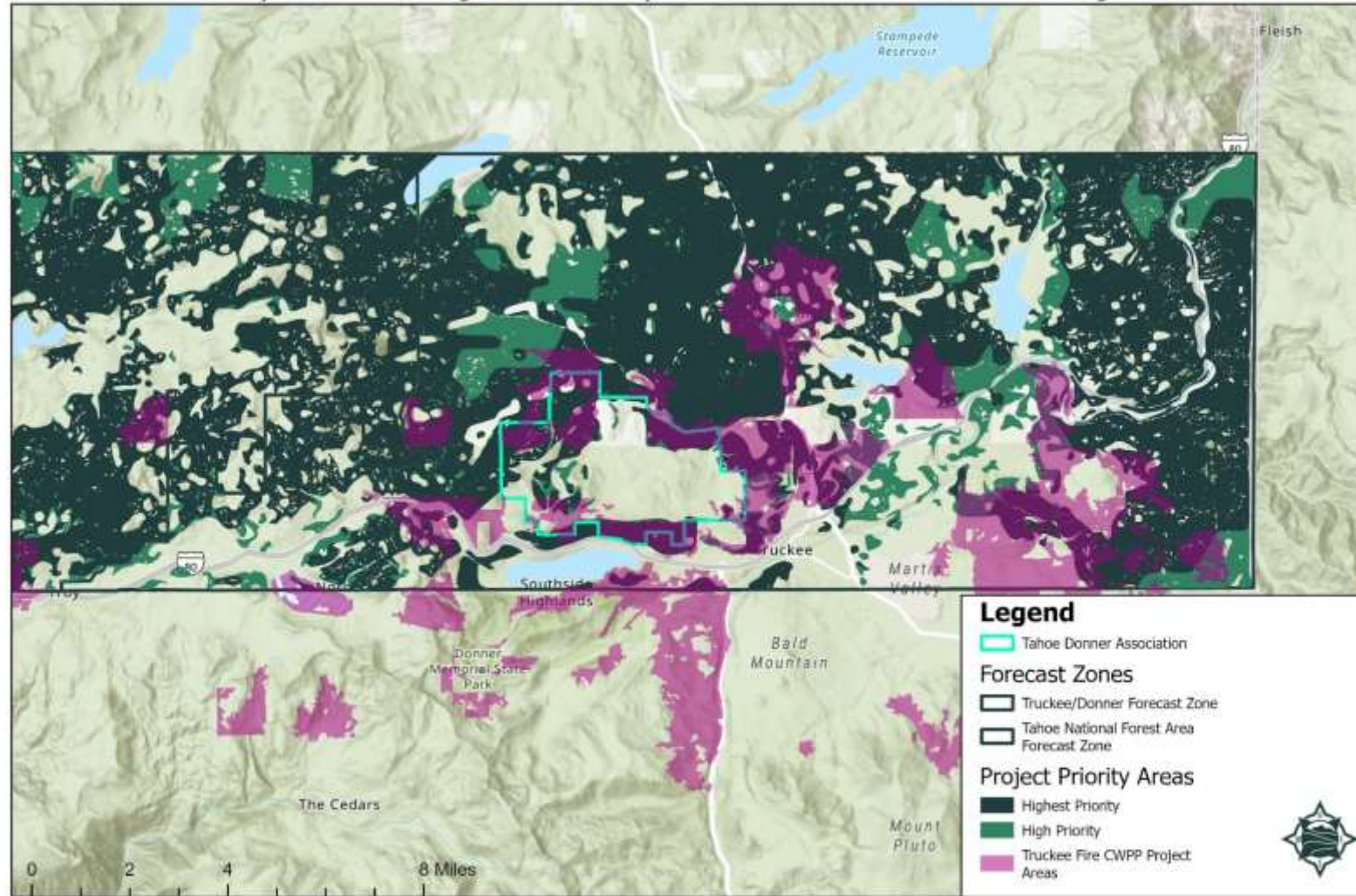
# Truckee/Donner Forecast Zone Project Priority Areas



**NEVADA COUNTY**  
CALIFORNIA  
**Office of Emergency Services**

Every reasonable effort has been made to ensure the accuracy of the maps and data provided. Nevertheless, some information may not be accurate. The County of Nevada assumes no responsibility, warranty of any kind, either expressed or implied, including but not limited to, the implied warranties of merchantability and fitness for a particular purpose, before making decisions using the information provided on this map, contact the Nevada County Public Counter staff to confirm the validity of the data provided.

# Nevada County CWPP Project Priority Areas & TFPD CWPP Project Areas



Every reasonable effort has been made to ensure the accuracy of the maps and data provided; nevertheless, some information may not be accurate. The County of Nevada assumes no responsibility arising from use of this information. THE MAPS AND ASSOCIATED DATA ARE PROVIDED WITHOUT WARRANTY OF ANY KIND, either expressed or implied, including but not limited to, the implied warranties of merchantability and fitness for a particular purpose. Before making decisions using the information provided on this map, contact the Nevada County Public Counter staff to confirm the validity of the data provided.

# Primary Community Concerns



# CWPP Recommended Actions



**Reduce Structural  
Ignitability**



**Vegetation  
Management & Fuel  
Reduction**



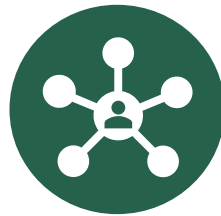
**Evacuation**



**Funding**



**Defensible Space**



**Community Outreach  
& Education**



**Emergency  
Communication**



**Post-Fire Recovery**



**NEVADA  
COUNTY**  
CALIFORNIA

**Office of Emergency  
Services**

**READY NEVADA COUNTY**

Plan Area	Recommendation
<i>Reduce Structural Ignitability</i>	Educate residents on how attached wooden decks impact structural ignitability. Encourage residents to not store combustible materials below wooden decks.
<i>Defensible Space</i>	Emphasize the importance of storing firewood away from structures during fire season.
<i>Vegetation Management/Fuel Reduction</i>	Conduct vegetation management/fuel reduction around high-use recreation facilities to decrease the potential for wildfire ignitions.
<i>Community Outreach/Education</i>	Develop outreach strategies to engage with seasonal residents, absentee landowners, and visitors.
<i>Evacuation</i>	Educate residents on the importance of developing individualized evacuation plans.
<i>Emergency Communication</i>	Identify areas with limited telecommunications facilities and capabilities and explore opportunities for enhancing communication to residents and visitors prior to, during, and following wildfire events.
<i>Post Fire Recovery</i>	Identify areas with limited telecommunications facilities and capabilities and explore opportunities for enhancing communication to residents and visitors prior to, during, and following wildfire events.



# Next Steps



Land Management Plan



GIS Application




Implementation

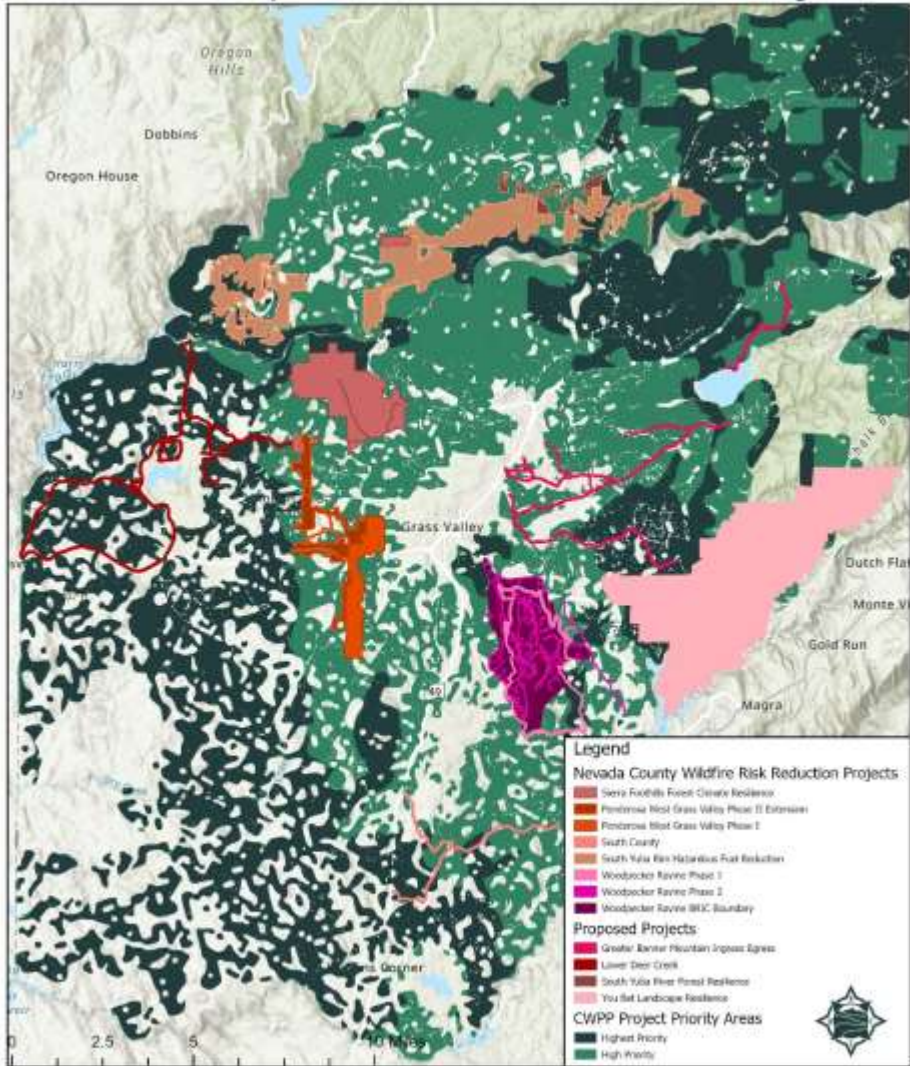


**NEVADA  
COUNTY**  
CALIFORNIA

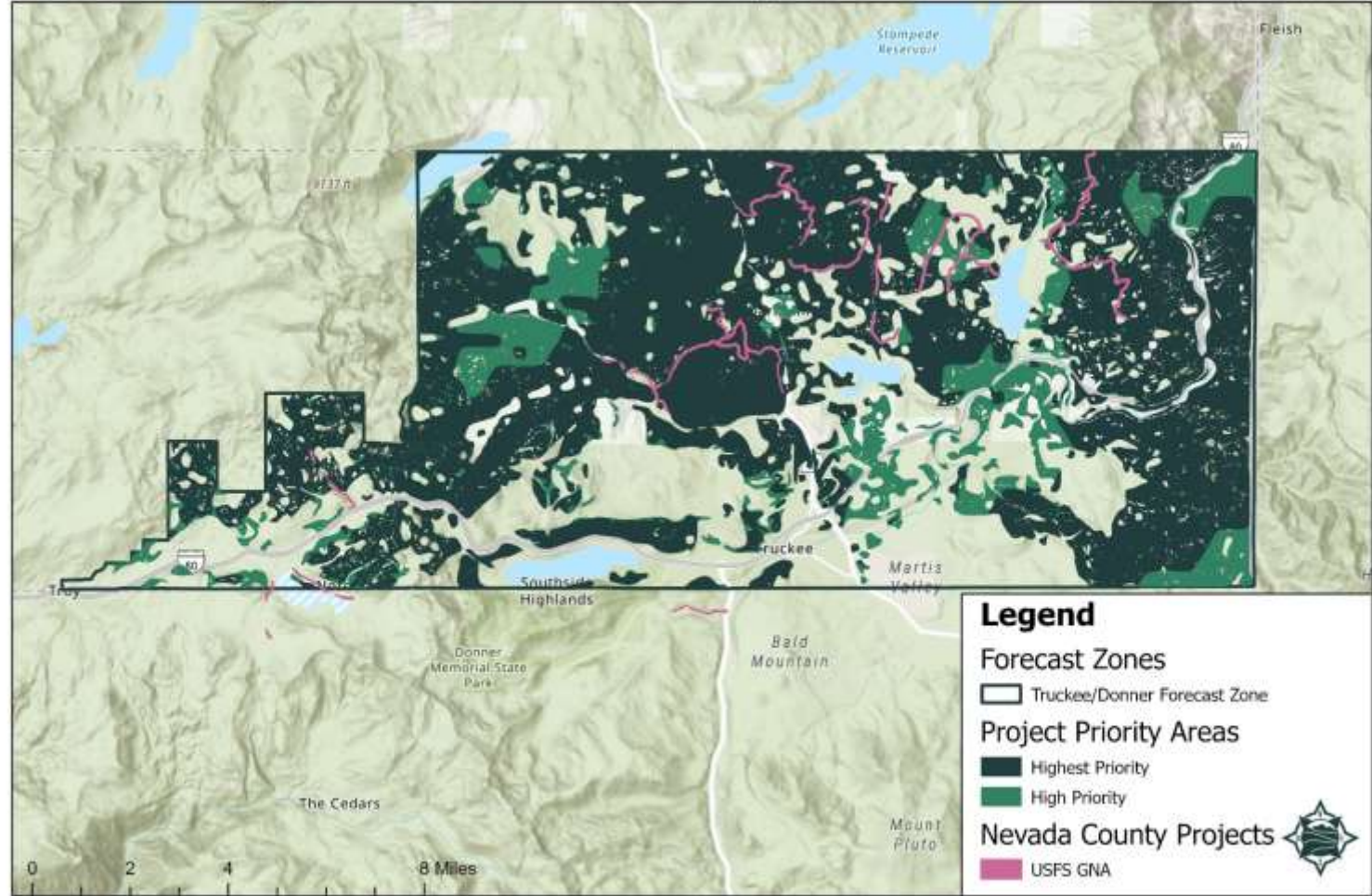
**Office of Emergency  
Services**

 **READY NEVADA COUNTY**

# Nevada County Wildfire Risk Reduction Projects



# Nevada County Wildfire Risk Reduction Projects





# Adoptions and Support

**Board of Supervisors: February 11, 2025**

**Resource Conservation District: February 11, 2025**

**City of Grass Valley: February 11, 2025**

**City of Nevada City: February 12, 2025**

**Tahoe Donner Board: February 28, 2025**

**Fire Chief's Association: March 4, 2025**

**CAL FIRE Nevada-Yuba-Placer Unit**

**Town of Truckee**

**Tahoe Donner Land Trust**

**South Yuba River Citizen's League**

**Yuba Watershed Institute**

**Truckee Fire Protection District**



**NEVADA  
COUNTY**  
CALIFORNIA

**Office of Emergency  
Services**

**READY NEVADA COUNTY**

# Questions



**NEVADA  
COUNTY**  
CALIFORNIA

**Office of Emergency  
Services**